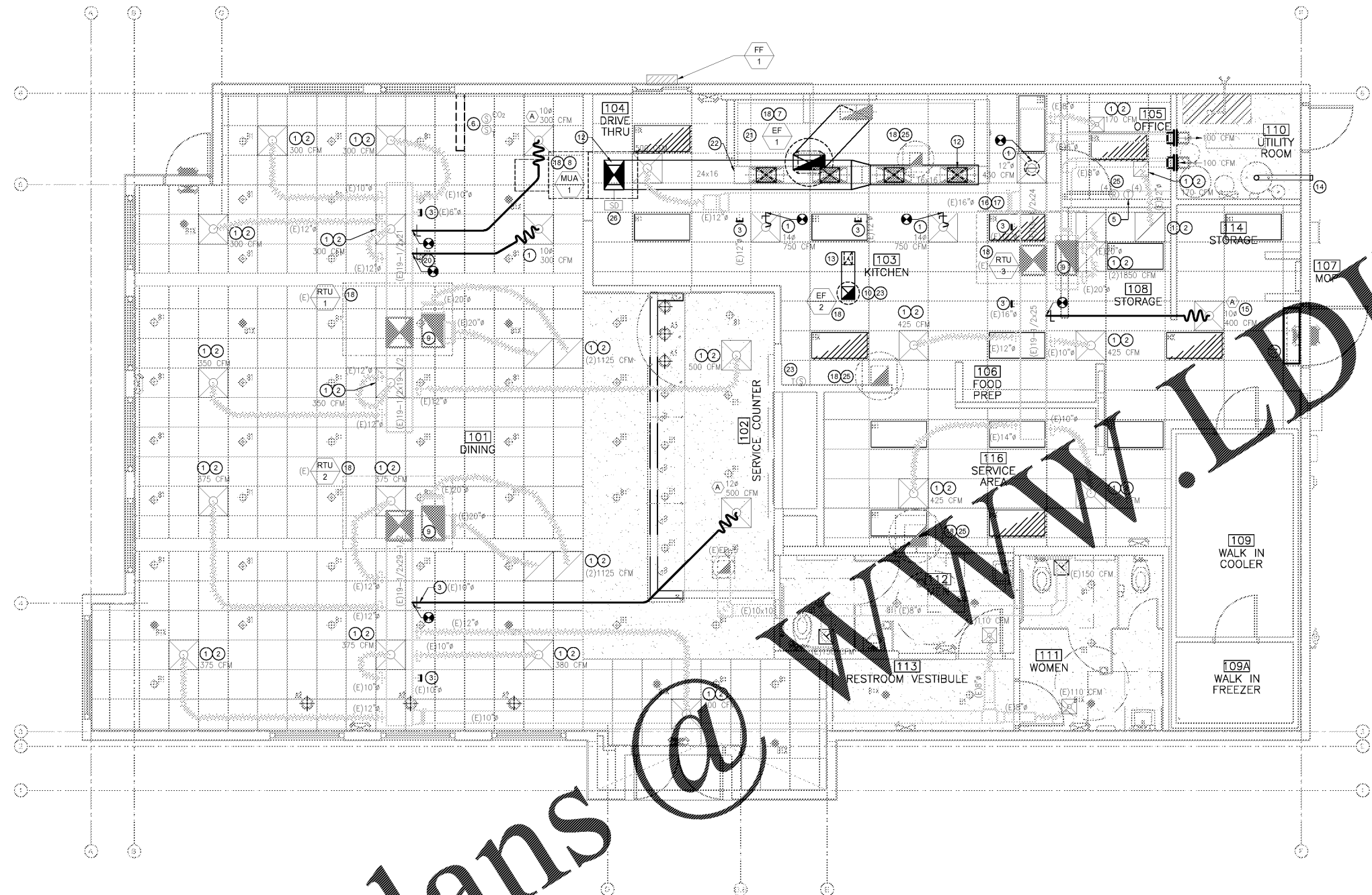


SWEN BY: ERIC 5/15/2018 12:39 PM
PRINTED BY: ERIC 7/3/2018 1:25 PM
2180148_M101_Floor_Plan.dwg

Order Plans @

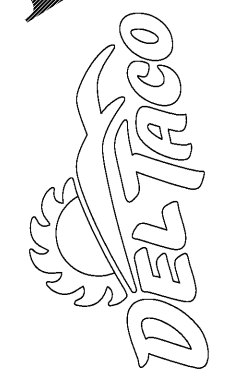


GENERAL NOTES

- REFER TO M001 FOR GENERAL NOTES.
- REFER TO M301 FOR DETAILS.
- ALL NEW DUCTWORK SHALL BE INSTALLED PER SPECIFICATIONS ON SHEET M002

KEYNOTES

- RELOCATE AND REBALANCE EXISTING DIFFUSER TO LOCATION AND CFM SHOWN ON PLANS.
- EXTEND EXISTING FLEX DUCT TO NEW DIFFUSER LOCATION. VE SIZING AND CONDITION, AND REPAIR/REPLACE AS NEEDED.
- REMOVE EXISTING DUCTWORK BACK TO MAIN. MAIN IF DUCTWORK IS NOT BEING REPLACED.
- FIELD VERIFY EXISTING DUCT MOUNTED SMOKE DETECTOR IN RETURN DUCT. PROVIDE IF NEEDED.
- EXISTING AIR CURTAIN TEST/RESET LOCATIONS. PROVIDE LABEL THAT IDENTIFIES REMOTE TEST/RESET UNIT.
- REMOVE TEMPERATURE SENSOR AND CARBON DIOXIDE SENSOR MOUNTED ON CEILING. CEILING NOT SHOWN. REFERENCE ROOF TOP UNIT SCHEDULE.
- REMOVE NEW 2" GREASE EXHAUST DUCT (REFER TO NOTE 12 ON SHEET M001) UP TO EF-1 ON ROOF. CONNECT TO HOOD AS REQUIRED. WRAP WITH 2 LAYERS OF FIRE WRAP FROM HOOD OUTLET TO UNDERSIDE OF ROOF. REFER TO DETAIL 05/M301. MAINTAIN MINIMUM SLOPE OF 1/4" PER FOOT BACK TO HOOD. TRANSITION IN INCREMENTS OF NO MORE THAN 45 DEG AND PROVIDE DUCT CLEANOUTS AT ALL CHANGES IN DIRECTION.
- MAKE-UP AIR FAN ON ROOF BY CAPTIVEAIRE AS SCHEDULED ON SHEET M003. TRANSITION DUCT IN RISER AND CONNECT TO HOOD AS REQUIRED.
- FIELD VERIFY DUCT MOUNTED SMOKE DETECTOR IN SUPPLY AIR DUCT. AND REMOTE TEST STATIONS IN OFFICE.
- 10x4 18 GA. STAINLESS STEEL DUCT UP TO EF-2 ON ROOF.
- 16x10 DOWN @ 700 CFM. CONNECT TO 20x12 MAKE-UP AIR CONNECTION. TYPICAL OF 4.
- 24x16 SUPPLY DUCT FROM MUA-1 ON ROOF.
- 10X4 EXHAUST DUCT CONNECTED TO TACO BAR STEAM 10" EXHAUST FLUE. FOR CONT. SEE KITCHEN DRAWINGS.
- EXISTING 4" CONCENTRIC VENT FOR GAS WATER HEATER.
- REFER TO DETAIL 04/M301 FOR DIFFUSER CONNECTION DETAIL. TYPICAL.
- RELOCATE EXISTING DUCT BRANCH IF NECESSARY TO AVOID CONFLICT WITH MAKEUP AIR DUCT AND EXHAUST HOOD.
- DUCT INSULATION WITHIN 18" OF OF THE TYPE 1 HOOD SHALL BE NON-COMBUSTIBLE (1-LAYER FIRE-RATED WRAP IDENTICAL TO GREASE EXHAUST DUCT).
- MECHANICAL EQUIPMENT ON ROOF.
- REFERENCE OFFICE ELEVATIONS IN ARCHITECTURAL PLAN FOR COORDINATION.
- VOLUME DAMPER (TYP.)
- TYPE I KITCHEN HOOD. REFER TO KITCHEN HOOD DRAWINGS.
- SUPPLY PLENUM ATTACHED TO KITCHEN HOOD. SEE KITCHEN HOOD DRAWINGS.
- WALL MOUNTED TEMPERATURE SENSOR FOR RTU-3.
- REMOTE SMOKE DETECTOR TEST/RESET FOR RTU-1, RTU-2, RTU-3 AND MUA-1.
- REMOVE DUCTWORK FROM EXISTING EXHAUST FAN, AND CAP BELOW ROOF DECK.
- DUCT MOUNTED SMOKE DETECTOR IN SUPPLY AIR DUCT TO PROVIDE FAN SHUTDOWN UPON ACTIVATION. PROVIDE REMOTE TEST/RESET STATION FOR EACH UNIT TO ALLOW SHUTDOWN OF THE HVAC UNIT (SIMULATING THE DETECTION OF SMOKE) AND AUDIBLE/VISIBLE SUPERVISORY SIGNAL. LOCATE IN MANAGERS OFFICE AND MOUNT AT 48" A.F.F. DETECTOR SHALL BE LISTED AND LABELED FOR INSTALLATION IN AIR DISTRIBUTION SYSTEMS AND COMPLY WITH UL268A (DUCT) OR 268. THE SMOKE DETECTORS SHALL BE CONNECTED TO A FIRE ALARM SYSTEM WHERE FIRE ALARM SYSTEM IS REQUIRED.
- EXISTING AIR CURTAIN.



DO NOT SCALE DRAWINGS
CONTRACTOR TO VERIFY
ALL EXISTING CONDITIONS AND
DIMENSIONS-NOTIFY ARCHITECT
OF ANY DISCREPANCIES PRIOR
TO BEGINNING CONSTRUCTION



JULY 5TH, 2018
NO REVISION

DEL TACO STORE - DT2017
4525 JIMMY LEE SMITH PARKWAY
HIRAM, GA 30141
PAULTON COUNTY
1ST PERMIT SUBMITTAL 05-18-18
1ST BID SUBMITTAL 07-05-18

PROJECT NUMBER
2180148

SHEET NAME
**MECHANICAL
FLOOR PLAN**

SHEET NUMBER
M101

DATE OF THIS PRINTING - 7/3/2018