

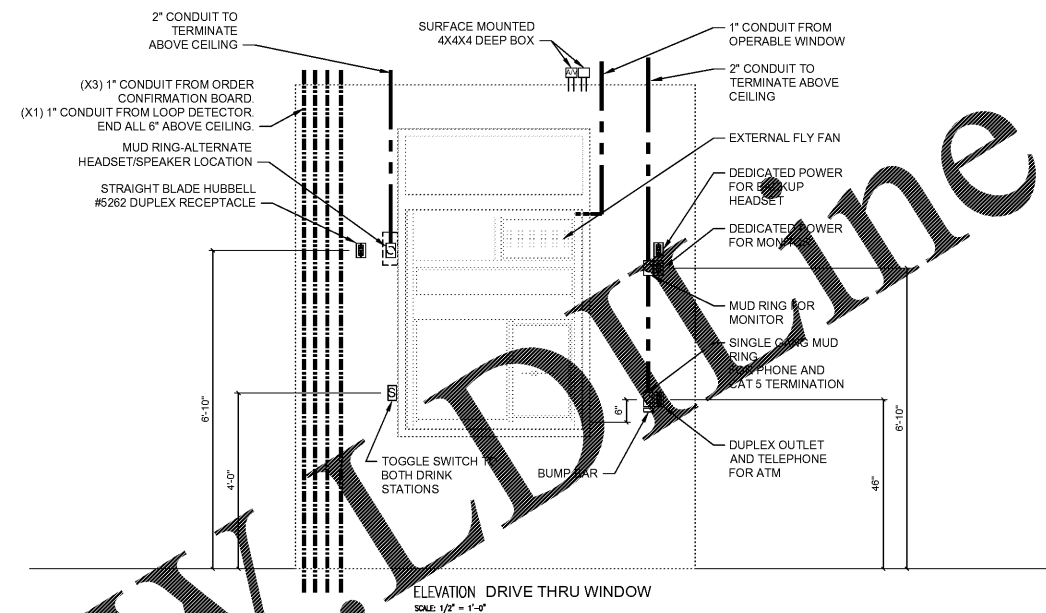


DO NOT SCALE DRAWINGS
CONTRACTOR TO VERIFY
ALL EXISTING CONDITIONS AND
DIMENSIONS-NOTIFY ARCHITECT
OF ANY DISCREPANCIES PRIOR
TO BEGINNING CONSTRUCTION

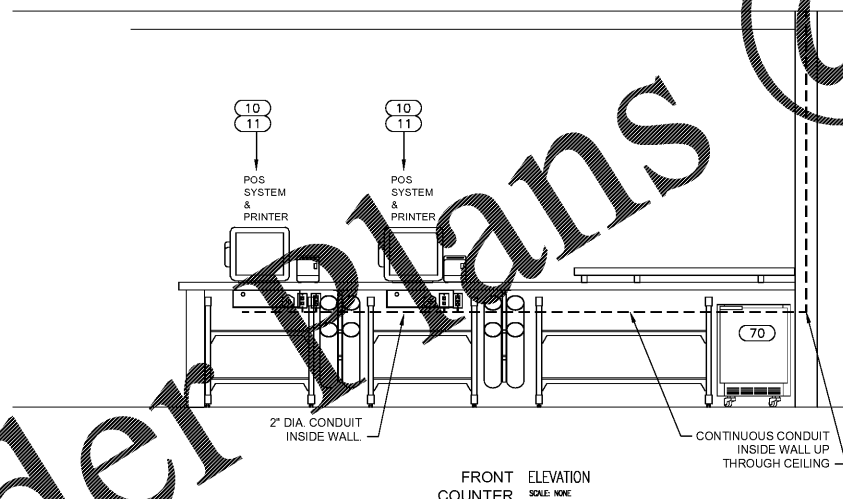


JULY 5TH, 2018

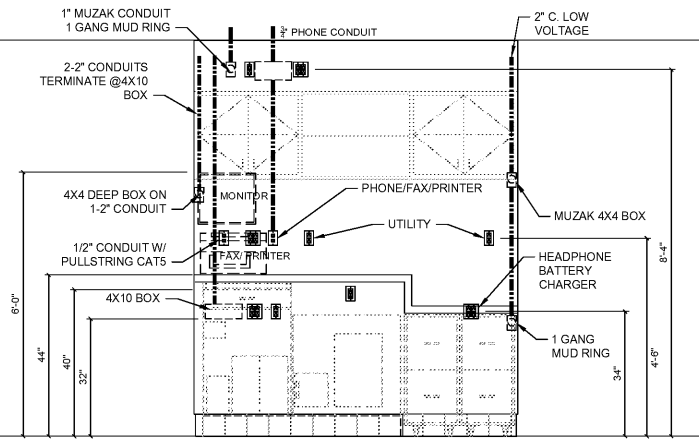
NO REVISION



DETAILS ARE FOR REFERENCE ONLY. REFER TO
KITCHEN DRAWINGS FOR COMPLETE SET



FRONT ELEVATION COUNTER
SCALE: NONE



OFFICE ELEVATION
SCALE: NONE

NOTE: ELECTRICAL CONTRACTOR TO
SUPPLY JUNCTION BOXES & CONDUITS
ABOVE CEILING, AS REQUIRED BY
LOCAL & STATE CODES.

DETAILS ARE FOR REFERENCE ONLY. REFER TO
KITCHEN DRAWINGS FOR COMPLETE SET

Order Plans @ www.LDOnline.com

DEL TACO STORE # DT2017
4525 JIMMY LEE SMITH PARKWAY
HIRAM, GA 30141
PAULTON COUNTY
1ST PERMIT SUBMITTAL 05-18-18
1ST BID SUBMITTAL 07-05-18

PROJECT NUMBER
2180148

SHEET NAME

**ELECTRICAL
DETAILS**

SHEET NUMBER

E203

DATE OF THIS PRINTING - 7/3/2018