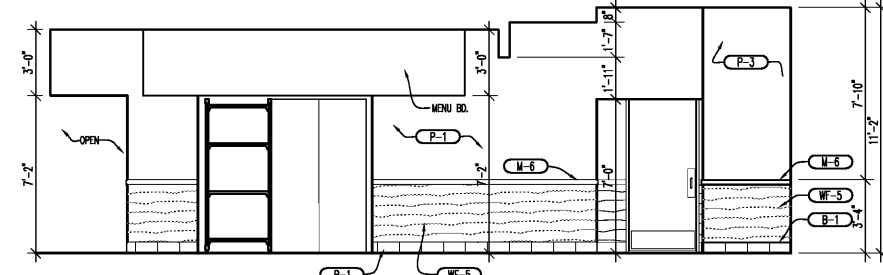
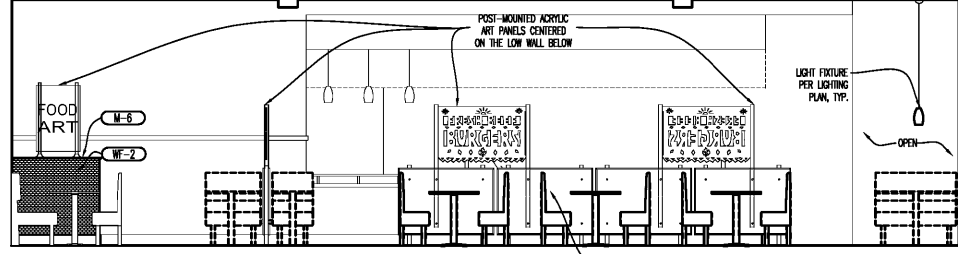


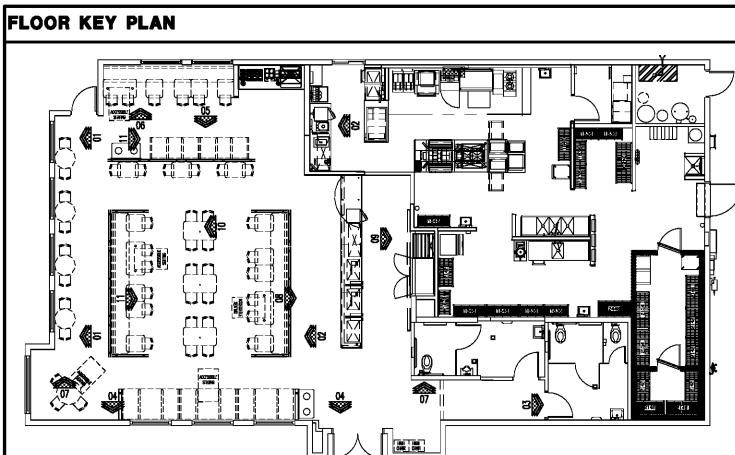
**10 INTERIOR ELEVATION**  
SCALE: 1/4"=1'-0"



**09 INTERIOR ELEVATION**  
SCALE: 1/4"=1'-0"

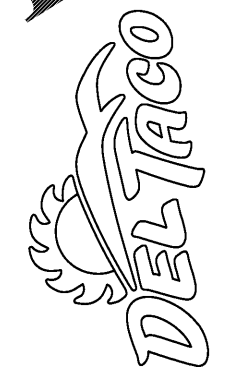


**11 INTERIOR ELEVATION**  
SCALE: 1/4"=1'-0"



- INTERIOR ELEVATION NOTES**
1. ALL HEIGHT REFERENCES ARE TAKEN FROM DATUM-TOP OF SLAB FOR AREA INDICATED.
  2. REFER TO FINISH SCHEDULE FOR EXTERIOR FINISHES, SHEET A602.
  3. REFER TO WINDOW SCHEDULE FOR WINDOW FINISHES AND WINDOW TYPES, SHEET A601.
  4. REFER TO DOOR SCHEDULE FOR DOOR FINISHES AND DOOR TYPES, SHEET A601.
  5. ALL LOW WALLS TO RECEIVE WF-2 TILE U.L.O.
  6. REFER TO DETAILS 17/A501 FOR TILE BASE
  7. ALL PLASTIC LAMINATE AND CORIAN TRIM FOR WAINSCOT ON WALLS TO BE BY THE MILLWORK CONTRACTOR.
  8. DINING TOPS AND WORK SURFACES SHALL BE 28 INCHES MINIMUM AND 34 INCHES MAXIMUM ABOVE FINISH FLOOR OR GROUND PER 2013 CBC 11B-902.3.

INT. MATERIAL/FINISH SCHEDULE	
FINISH	DESCRIPTION
<b>B BASES</b>	
REFER TO THE FOLLOWING: TAMARA GRANDOUSKY - DALLIE NATIONAL ACCOUNT MANAGER CONTACT FOR ALL TILES: M-415-290-8302 F-415-651-9187	
B-1	MANUFACTURER: DALLIE PRODUCT: GLAZED PORCELAIN - PORCALTO 6"x12" S-36C9TB W/ 3/8" COVE BASE W/ SC-36BRT OUTSIDE CORNER COLOR: CITYLINE KOHL #C021 GROUT: LATOCRETE #43 CHOCOLATE TRUFFLE; MINIMIZE GROUT LINES
B-2	MANUFACTURER: DAL TILE PRODUCT/FINISH: QUARRY TEXTURES 6"x6" COVE BASE COLOR: 0101: DANLO RED GROUT: LATOCRETE #43 CHOCOLATE TRUFFLE; MINIMIZE GROUT LINES
B-3	NOT USED
<b>NOTES:</b> AT MILLWORK	
<b>CL CEILING</b>	
CL-1	PRODUCT/FINISH: GYP BD COLOR: PAINT
CL-2	MANUFACTURER: ARMSTRONG PRODUCT/FINISH: AEROLITE - EXPOSED TEE SYSTEM W/ 15/16" GRID SIZE: ULTIMA #18 - 22.5/4" PANELS COLOR: WHITE
CL-3	NOT USED
CL-4	MANUFACTURER: ARMSTRONG PRODUCT/FINISH: AEROLITE XL EXPOSED TEE SYSTEM W/ 15/16" GRID E-CLEAN RAIL #18 24x45/8" SMOOTH VINYL FACED PANELS COLOR: WHITE
<b>FL FINISHES</b>	
REFER TO THE FOLLOWING: NATIONALACCOUNTS@DALTILE.COM CONTACT FOR ALL TILES: PHONE: 877.556.5728	
F-1	MANUFACTURER: DAL TILE PRODUCT/FINISH: SHOULDERBROOK 6"x6" (WITH RANDOM OFFSET PATTERN) COLOR: SD-15 WALNUT GROUT: MAPEI - #114 "MIDGRAY"; MINIMIZE GROUT LINES
F-2	NOT USED
F-3	MANUFACTURER: DAL TILE PRODUCT/FINISH: QUARRY TEXTURES 6"x6" COLOR: 0101: DANLO RED GROUT: MAPEI #47 "DWARCOAL"; EPOXY GROUT
<b>NOTES:</b> SMOOTH FINISH UNDER EQUIPMENT, ABRASIVE FINISH ELSEWHERE, REFER TO FINISH FLR PLAN	
<b>M MISC.</b>	
M-1	MANUFACTURER: DAL TILE PRODUCT/FINISH: CERAMIC SURFACE WALL TILE 3"x6"x1/4" COLOR: L624 WHITE GROUT: MAPEI ULTRACOLOR PLUS FA "00" WHITE WITH A 1/16" GROUT CONTACT: TAMARA GRANDOUSKY PHONE: 415-290-8302
M-2	MANUFACTURER: MARLITE RESTROOM DOOR PARTITIONS & FRAMES PRODUCT/FINISH: FORMICA COLOR: AFRICAN LUMBA #7011-43 CONTACT:
M-3	MANUFACTURER: DUPONT CORIAN PRODUCT/FINISH: 1/2" SOLID SURFACE PRIVATE COLLECTION COLOR: NATURAL GRAY CONTACT:
M-4	MANUFACTURER: DUPONT CORIAN PRODUCT/FINISH: 1/2" SOLID SURFACE PRIVATE COLLECTION COLOR: RAIN CLOUD CONTACT:
M-5	MANUFACTURER: FORMICA PRODUCT/FINISH: LAMINATE WOODGRAINS COLOR: #756 NATURAL MAPLE CONTACT:
M-6	MANUFACTURER: DUPONT CORIAN PRODUCT/FINISH: 1/2" SOLID SURFACE PRIVATE COLLECTION COLOR: CINNABAR CONTACT:
<b>P PAINT &amp; STAIN</b>	
P-1	MANUFACTURER: SHERWIN WILLIAMS PRODUCT/FINISH: SW# 0057 - EGGSHELL COLOR: CHINESE RED CONTACT: JOHN GASTON, 214.553.3940
P-2	MANUFACTURER: SHERWIN WILLIAMS PRODUCT/FINISH: SW# 6712 - EGGSHELL COLOR: LUMI GREEN CONTACT: JOHN GASTON, 214.553.3940
P-3	MANUFACTURER: SHERWIN WILLIAMS PRODUCT/FINISH: SW #6380 - EGGSHELL COLOR: HUMBLED GOLD CONTACT: JOHN GASTON, 214.553.3940
P-4	MANUFACTURER: SHERWIN WILLIAMS PRODUCT/FINISH: SW #6090 - EGGSHELL COLOR: JVA CONTACT: JOHN GASTON, 214.553.3940
P-5	MANUFACTURER: SHERWIN WILLIAMS PRODUCT/FINISH: SW #7008 - EGGSHELL COLOR: ALABASTER CONTACT: JOHN GASTON, 214.553.3940
P-6	MANUFACTURER: SHERWIN WILLIAMS PRODUCT/FINISH: SW #6891 - EGGSHELL COLOR: MANDARIN CONTACT: JOHN GASTON, 214.553.3940
<b>WF WALL FINISHES</b>	
REFER TO THE FOLLOWING: NATIONALACCOUNTS@DALTILE.COM CONTACT FOR ALL TILES: PHONE: 877.556.5728	
WF-1	MANUFACTURER: DAL TILE PRODUCT/FINISH: CERAMIC - CASTLE METALS 2 1/2"x12" COLOR: AGED COPPER HAMMERED OSET #C001 GROUT: LATOCRETE #43 CHOCOLATE TRUFFLE; MINIMIZE GROUT LINES CONTACT: TAMARA GRANDOUSKY PHONE: 415-290-8302
WF-2	MANUFACTURER: DAL TILE PRODUCT/FINISH: COLORBODY PORCELAIN - KEYSTONES 12" COLOR: BEACH BLEND DK04 (L335, D317, D161) GROUT: LATOCRETE #43 CHOCOLATE TRUFFLE; MINIMIZE GROUT LINES CONTACT: TAMARA GRANDOUSKY PHONE: 415-290-8302 NOTES: ON 5/8" WATER RESISTANT GYP BD
WF-3	MANUFACTURER: PRODUCT/FINISH: FRP COLOR: WHITE
WF-4	MANUFACTURER: PRODUCT/FINISH: STAINLESS STEEL PANELS
WF-5	MANUFACTURER: FORMICA PRODUCT/FINISH: LAMINATE WOODGRAINS COLOR: #756 NATURAL MAPLE NOTES: ON 5/8" GYP BD; RUN GRAIN HORIZONTAL EXCEPT ON DOORS
WF-6	MANUFACTURER: DAL TILE PRODUCT/FINISH: CERAMIC - CASTLE METALS 4 1/4"x4 1/4" COLOR: AGED COPPER HAMMERED INSERT #C001 GROUT: LATOCRETE #43 CHOCOLATE TRUFFLE; MINIMIZE GROUT LINES
WF-7	MANUFACTURER: DAL TILE PRODUCT/FINISH: CERAMIC - SEMI GLOSS 4 1/4"x4 1/4" COLORS: WHITE #0100 (33X), ALMOND #0125 (33X), URBAN PUTTY #0161 (33X) GROUT: LATOCRETE #43 CHOCOLATE TRUFFLE; MINIMIZE GROUT LINES
WF-8	MANUFACTURER: SCHLUTER SYSTEMS PRODUCT/FINISH: ALUM - JOLLY 3/16" COLOR: ANTIQUE BRONZE AB68



DO NOT SCALE DRAWINGS  
CONTRACTOR TO VERIFY  
ALL EXISTING CONDITIONS AND  
DIMENSIONS-NOTIFY ARCHITECT  
OF ANY DISCREPANCIES PRIOR  
TO BEGINNING CONSTRUCTION



JULY 5TH, 2018  
NO | REVISION

DEL TACO STORE - DT2017  
4826 JIMMY LEE SMITH PARKWAY  
HIRAM, GA 30141  
PAULTON COUNTY  
1ST PERMIT SUBMITTAL 08-18-18  
1ST BID SUBMITTAL 07-05-18

PROJECT NUMBER  
**2180148**

SHEET NAME  
**INTERIOR ELEVATIONS**

SHEET NUMBER  
**A212**

DATE OF THIS PRINTING - 7/3/2018

SWED BY: JACHIN 7/15/2018 4:44 PM  
PRINTED BY: JACHIN 7/15/2018 4:51 PM  
0700\_2180148\_A212\_interior

Order Plans @ WWW.LDILINE.COM