

GENERAL ELEVATION NOTES

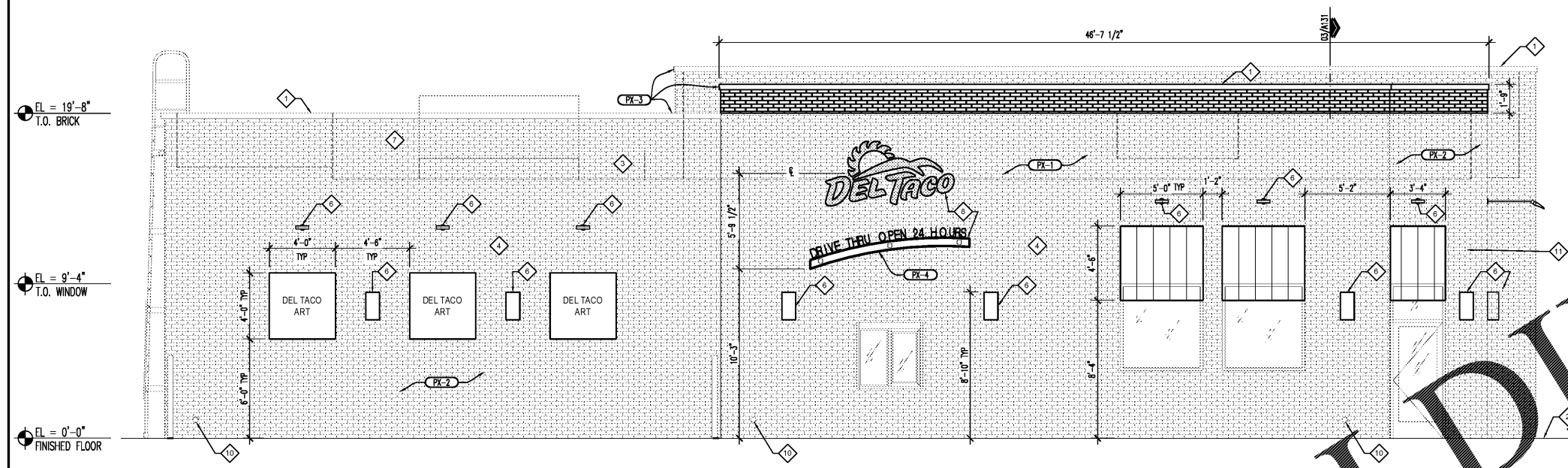
1. REFER TO ARCHITECTURAL FLOOR PLAN FOR ADDITIONAL DIMENSIONS.
2. ALL HEIGHT REFERENCES ARE TAKEN FROM DATUM-TOP OF SLAB FOR AREA INDICATED.
3. REFER TO DOOR SCHEDULE FOR DOOR FINISHES AND DOOR TYPES, SHEET A601.
4. BUILDING SIGNAGE UNDER SEPARATE PERMIT AND SUBMITTAL.
5. ALL SIGNS AND LOGOS BY SIGN VENDOR.
6. LIGHTING FIXTURES PER ELECTRICAL LIGHTING SCHEDULE.

EXT. MATERIAL/FINISH SCHEDULE

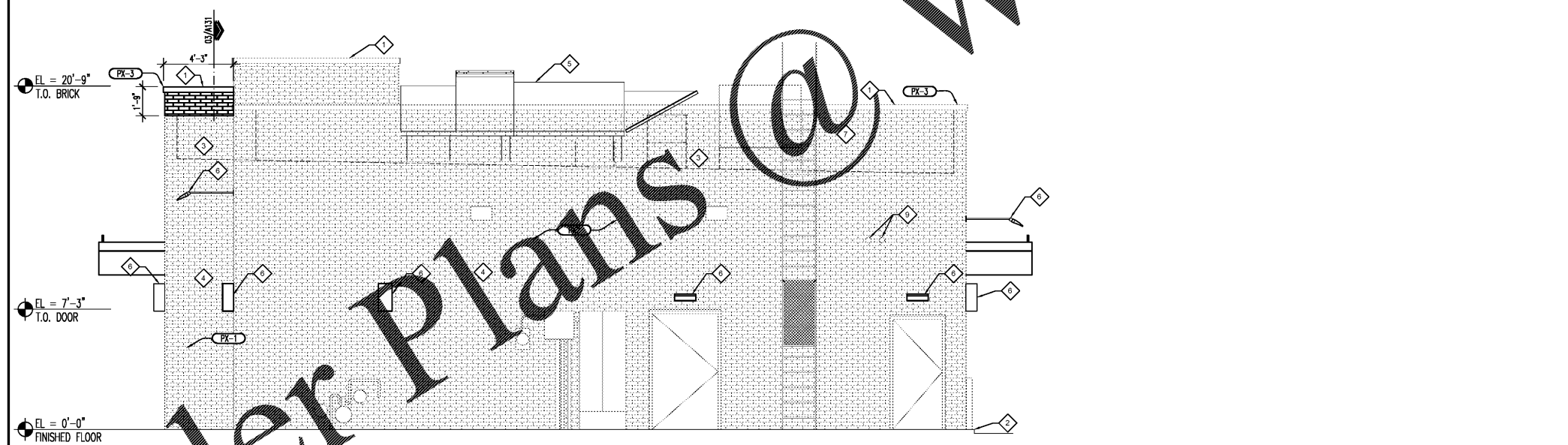
FINISH	DESCRIPTION
MX	MISC
MX-1	MANUFACTURER: METAL FLASHING, ITEM PRODUCT/FINISH: METAL FLASHING, ITEM COLOR: TO MATCH PX-1
	PAINTS & STAIN
PX-1	MANUFACTURER: SHERWIN WILLIAMS PRODUCT/FINISH: SW #0057 - SATIN COLOR: CHINESE RED
PX-2	MANUFACTURER: SHERWIN WILLIAMS PRODUCT/FINISH: SW #7832 - SATIN COLOR: MODERN GRAY
PX-3	MANUFACTURER: SHERWIN WILLIAMS PRODUCT/FINISH: SW #6090 - GLOSS COLOR: JAVA
PX-4	MANUFACTURER: SHERWIN WILLIAMS PRODUCT/FINISH: SW #6712 - SATIN COLOR: LUAU GREEN
WFX	WALL FINISHES
WFX-1	MANUFACTURER: PRODUCT/FINISH: STUCCO W/ MONTEREY FINISH COLOR: PAINTED PX-1
WFX-2	MANUFACTURER: PRODUCT/FINISH: STUCCO W/ HEAVY SAND FLOAT FINISH COLOR: PAINTED PX-2
WFX-3	MANUFACTURER: PRODUCT/FINISH: STUCCO W/ HEAVY SAND FLOAT FINISH COLOR: PAINTED PX-3
AWX	AWNINGS
AWX-1	MANUFACTURER: METAL SALES, STANDING SEAM METAL ROOF PRODUCT/FINISH: SAMP LOC24 COLOR: PX-4 CONTACT: MARK EAKER, 702-277-7579

KEYED ELEVATION NOTES

- 1 METAL COPING AT PARAPET RE: 1/A302 AND 4/A131, TYP.
- 2 EXISTING CURB TO REMAIN. RE: TO CIVL.
- 3 FLAT ROOF BEYOND. SEE ROOF PLAN ON A131.
- 4 EXISTING TO REMAIN BRICK.
- 5 MAKE-UP-AIR UNIT DUCT. REFER TO MECHANICAL DRAWING.
- 6 EXTERIOR LIGHTING. RE: TO ELECTRICAL LIGHTING PLAN.
- 7 EXISTING PARAPET TO REMAIN.
- 8 SIGNAGE SUBMITTED UNDER SEPARATE COVER BY OTHERS. PROVIDE POWER TYP.
- 9 EXISTING VENT TO REMAIN.
- 10 EXISTING OVERFLOW DRAIN TO REMAIN.
- 11 PATCH BRICK TO MATCH EXISTING.



1 EXTERIOR ELEVATION - NORTH
SCALE: 1/4" = 1'-0"



2 EXTERIOR ELEVATION - EAST
SCALE: 1/4" = 1'-0"



DO NOT SCALE DRAWINGS
CONTRACTOR TO VERIFY
ALL EXISTING CONDITIONS AND
DIMENSIONS-NOTIFY ARCHITECT
OF ANY DISCREPANCIES PRIOR
TO BEGINNING CONSTRUCTION



JULY 5TH, 2018
NO | REVISION

DEL TACO STORE - DT2017
4625 JIMMY LEE SMITH PARKWAY
HIRAM, GA 30141
PAULTON COUNTY
1ST PERMIT SUBMITTAL 08-18-18
1ST BID SUBMITTAL 07-05-18

PROJECT NUMBER
2180148

SHEET NAME
**EXTERIOR
ELEVATIONS**

SHEET NUMBER
A201

DATE OF THIS PRINTING - 7/3/2018