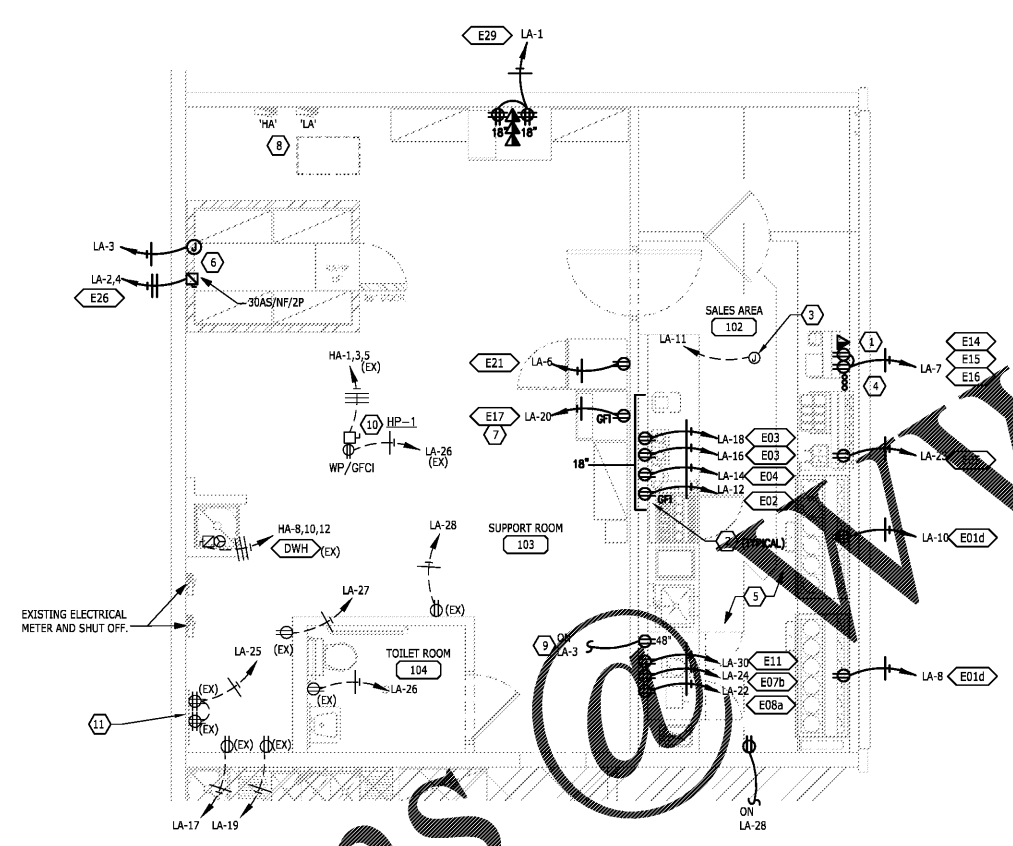


C:\Users\Mike\Documents\Projects\14-Haagen Dazs Prototype\05_CDS\01_PME\14A_Street In-line Prototype\14A_E-30_6/19/2014 8:17:23 AM_MIKE

Order Plans



KEYED NOTES

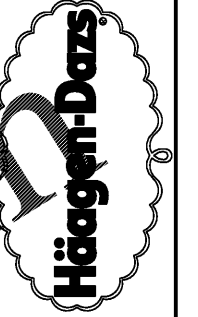
1. DEDICATED TELEPHONE LINE TO BE PROVIDED TO CASH REGISTER/CREDIT CARD READER. PROVIDE DATA CATS CABLING THRU CASEWORK DIE WALL FROM PRIMARY CASH REGISTER TO EACH SECONDARY CASH REGISTER. PROVIDE EXTRA LENGTH (MIN 48") AT EACH END WITH REAS TERMINATIONS FOR INSTALLATION OF CASH REGISTERS. CASH REGISTERS TO BE PROVIDED WITH A DEDICATED AND ISOLATED GROUND OUTLET FOR ELECTRICAL SUPPLY.
2. PROVIDE CONNECTION TO EQUIPMENT. COORDINATE CONNECTION TYPE AND LOCATION WITH EQUIPMENT PROVIDED AND MILLWORK BEFORE ROUGH-IN.
3. EXISTING ROUGH-IN ABOVE CEILING FOR STOREFRONT SIGN. TGC SHALL PROVIDE FINAL CONNECTIONS TO NEW SIGN. TGC SHALL ROUTE CIRCUIT THROUGH CONTRACTOR AS SHOWN (3/E2.0)
4. PROVIDE (3) 1" CONDUIT STUB-UPS FOR POWER AND (1) 1/2" CONDUIT STUB UP FOR DATA IN HALF WALL FOR CONNECTION TO EQUIPMENT.
5. ALL 120V RECEPTACLES IN THE KITCHEN AREA SHALL BE GFCI PROTECTED PER NEC 210-8. CIRCUITS NOT INDICATED WITH GFI CIRCUIT BREAKERS SHALL BE PROVIDED WITH GFI RECEPTACLES.
6. GC SHALL SUPPLY POWER, INTERCONNECTING SERVICES AND ALL FINAL CONNECTIONS TO WALK-IN FREEZER, COMPRESSORS, CONDENSERS, EVAPORATORS SOLENOID VALVES & SWITCHES REQUIRED FOR A COMPLETE OPERATING SYSTEM. FURNISH AND INSTALL A DISCONNECT SWITCH FOR COMPRESSOR. WALK-IN REFRIGERATOR LIGHTS SHALL BE FURNISHED WITH WALK-IN AND INSTALLED & FULLY CONNECTED BY THE ELECTRICAL CONTRACTOR.
7. PROVIDE 6' CORD AND PLUG FOR ICE MACHINE.
8. EXISTING ELECTRICAL PANELS "HA" AND "LA" AND SUSPENDED 45 KVA TRANSFORMER TO REMAIN.
9. RECEPTACLE FOR IPAD CHARGER
10. EXISTING HEAT PUMP WITH DISCONNECT SWITCH AND CONVENIENCE OUTLET ON ROOF, DUCTWORK AND DIFFUSERS TO REMAIN.
11. EXISTING

GENERAL NOTES

- A. COORDINATE ALL WORK WITH OTHER TRADES AND EXISTING CONDITIONS AS REQUIRED. INSTALL ALL SYSTEMS AS INTENDED, WITHIN THE CONTINUES OF SPACES AVAILABLE, AND WITHOUT INTERFERENCES.
- B. IT IS THE ELECTRICAL CONTRACTORS RESPONSIBILITY TO PROPERLY BALANCE ALL BRANCH CIRCUITS BETWEEN THE PHASES OF THE SYSTEM. REGARDLESS OF CIRCUITING INDICATED.
- C. DISCONNECTS FOR CONDENSING UNITS TO BE PROVIDED BY MECHANICAL CONTRACTOR, INSTALLED BY ELECTRICAL CONTRACTOR. ALL OTHER DISCONNECTS SHALL BE FURNISHED AND INSTALLED BY ELECTRICAL CONTRACTOR.
- D. REFER TO ARCHITECTURAL DRAWINGS FOR EXACT LOCATION OF LIGHT FIXTURES AND DEVICES.
- E. REFER TO ELECTRICAL SPECIFICATIONS ELSEWHERE IN THESE DRAWINGS FOR FURTHER INFORMATION AND REQUIREMENTS. GENERAL CONDITIONS AND SUMMARY OF WORK ALSO DIRECTLY APPLY TO THIS WORK.
- F. ALL ELECTRICAL PENETRATIONS INTO COOLER SHALL BE SEALED PER NEC 300-7.
- G. TELEPHONE WIRING AND OUTLETS TO BE PROVIDED BY CONTRACTOR - OWNER TO PROVIDE SERVICE AND EQUIPMENT.
- H. REFER TO ARCHITECTURAL DRAWINGS FOR MOUNTING LOCATION AND ELECTRICAL REQUIREMENTS AND HEIGHTS, ETC FOR KITCHEN EQUIPMENT.

ELECTRICAL SYMBOLS LIST

CIRCUITING & NOTES	
48"	SPECIAL MOUNTING HEIGHT FOR ASSOCIATED DEVICE. (CENTERLINE OF DEVICE)
GFI	GROUND FAULT INTERRUPTER DEVICE.
WP	WEATHERPROOF ENCLOSURE ON DEVICE.
IG	ISOLATED GROUND DEVICE.
(X)	ELECTRICAL FLOOR PLAN NOTE WITH DESIGNATION.
2	CONDUIT CONCEALED WHERE POSSIBLE OR AS NOTED. ARROWS INDICATE HOME RUN TO PANEL. CIRCUIT NUMBERS INDICATED.
12	#12 WIRE IN CONDUIT, UNLESS NOTED OTHERWISE IN DRAWINGS OR SPECIFICATION.
12	GROUNDING CONDUCTOR, #12 WIRE UNLESS NOTED OTHERWISE IN DRAWINGS OR SPECIFICATION.
---	CONDUIT ROUTED UNDER SLAB.
POWER DEVICES	
DEVICE HEIGHTS INDICATED SHALL BE TO CENTER OF BOX. RECEPTACLES SHALL BE AT 18" AFF UNLESS NOTED OTHERWISE. ALL DEVICES SHALL BE COMMERCIAL GRADE.	
(R)	DUPLEX RECEPTACLE
(R)	DUPLEX RECEPTACLE
USB	PROVIDED WITH (2) USB CHARGING OUTLETS WITH BRASS PLATES (PASS & SEYMOUR TR5262USBW OR APPROVED EQUAL)
CTR	LOCATE OUTLET ABOVE COUNTER. SEE ARCH DRAWINGS FOR COUNTER HEIGHTS
SW	SHOW WINDOW RECEPTACLE. MOUNT MAXIMUM 18" FROM STOREFRONT.
CL	RECESSED CLOCK RECEPTACLE (PASS & SEYMOUR S3713SW OR APPROVED EQUAL)
(H)	HEAVY DUTY OUTLET - NEMA CONFIGURATION SIZE PER EQUIPMENT MANUFACTURER'S RECOMMENDATION.
(P)	PANEL BOARD, TOP OF BOX 6'-0" AFF.
(J)	JUNCTION BOX.
(N)	NON-FUSED DISCONNECT SWITCH.
(F)	FUSED DISCONNECT SWITCH.
(E)	EQUIPMENT CONNECTION
CONTROLS	
(S)	SINGLE POLE WALL SWITCH, TOP OF BOX AT 48" AFF.
(2S)	TWO POLE WALL SWITCH, TOP OF BOX AT 48" AFF.
(OS)	SINGLE POLE OCCUPANCY SENSOR (600WATT)
COMMUNICATIONS	
(V)	DATA/TELEPHONE OUTLET
MISC	
(TV)	SINGLE-GANG RECESSED TV BOX W/ SURGE PROTECTIVE & LOW VOLTAGE KIT. #TV1WTVSSW BY PASS & SEYMOUR. INCLUDES DUPLEX OUTLET, CAT-5E JACK, AND F-CONECTORS.
(P)	PUSHBUTTON, MOUNT AS INDICATED

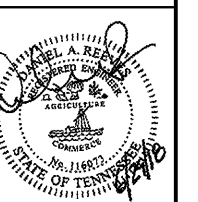


SHOP# 1306
SPACE #1164
WEST TOWN MALL
7600 KINGSTON
PIKE
KNOXVILLE, TN
37919

Date	Revisions	No.

pdms
design group
2225 East Randol Mill Road, Suite #300
Arlington, Texas 76011
817.633.4200 p • 817.633.4153 f

DR
DANIEL A. REEVES, P.E.
2225 E. Randol Mill Rd, Suite 300
Arlington, TX 76011
(817)701-4808
FAX (817)633-4153
Tennessee License #116073



Project No.	180165
Scale	AS NOTED
Drawn	AH
Checked	DAR
Date	06/29/2018
Drawing Title	

POWER PLAN

Drawing No. **E3.0**

REFERENCE SHEET A1.1 FOR KITCHEN EQUIPMENT SCHEDULE

1 FLOOR PLAN
1/4"=1'-0"