

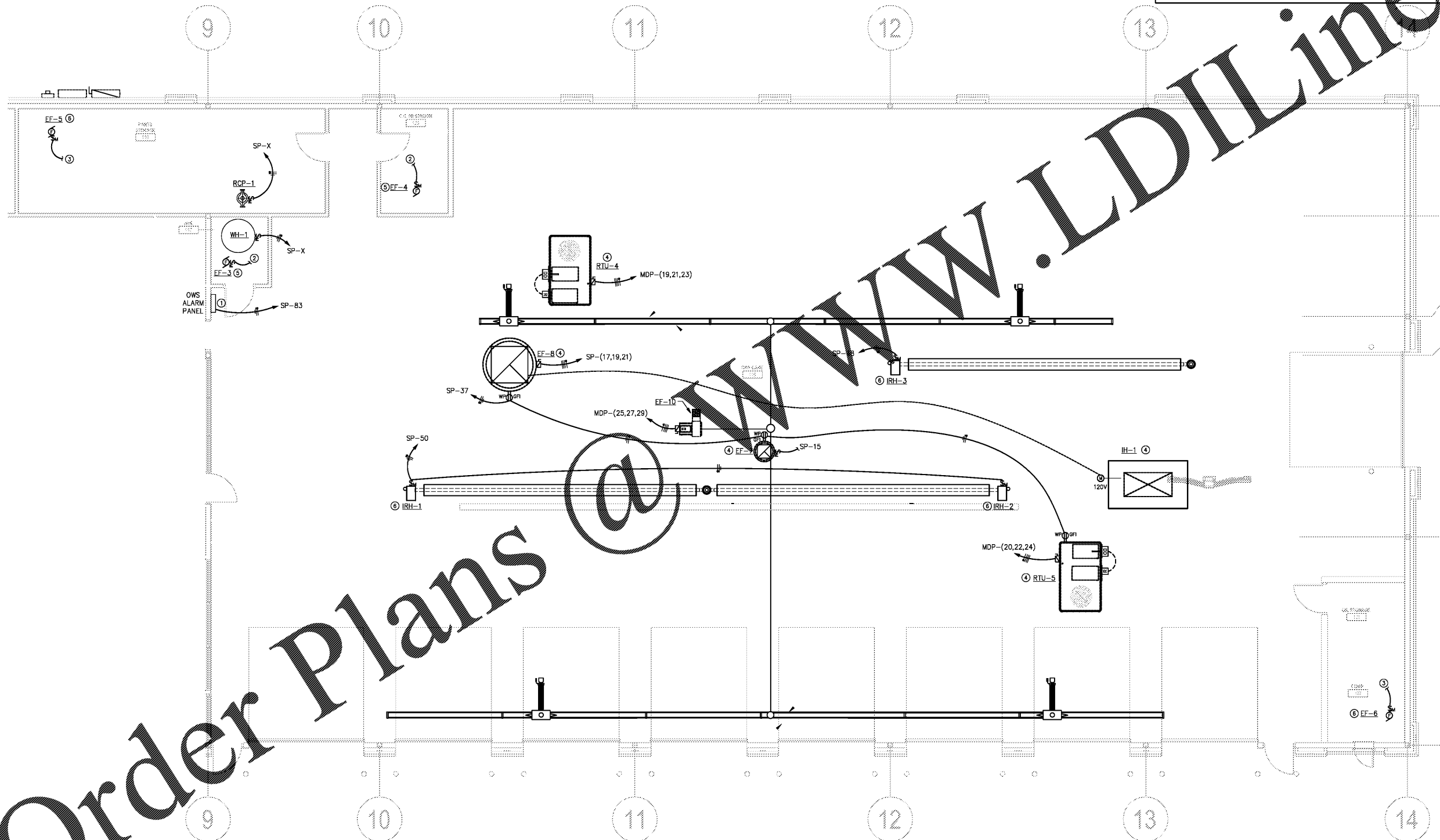
HVAC & PLUMBING EQUIPMENT CONNECTIONS		
RTU-4 RTU-5	CONNECT RTU-4, & 5, EACH 7.5 TONS, 480V-3Ø, MCA=41.9, MCCP=50. PROVIDE 60 AMP, 3-FUSE, NEMA-3R SAFETY SWITCH AT EACH CONNECTION. FUSE SWITCHES WITH 50 AMP FUSETRONS. GAS HEAT. CIRCUIT 1¼"C, 3Ø4, #10 GND.	NOTE: ELECTRICAL CONTRACTOR SHALL COORDINATE WITH THE MECHANICAL CONTRACTOR FOR EXACT EQUIPMENT BEING FURNISHED UNDER THIS CONTRACT. THE ELECTRICAL CONTRACTOR SHALL FURNISH AND INSTALL ALL DISCONNECTS, FUSES, REDUCERS, CONTROL CIRCUITS AND CONNECTIONS REQUIRED FOR THE INSTALLATION OF THE MECHANICAL EQUIPMENT, ALL FUSES SHALL BE PER THE NAME PLATE LABEL.
IRH-1 THRU IRH-2	CONNECT INFRARED HEATERS. EACH 120 VOLTS, 4.8 AMP DURING IGNITION, 1.1 AMPS RUNNING. PROVIDE SPST SWITCH AT CONNECTION. CIRCUIT ¾"C WITH 1-#12 & 1-#12 GND.	
EF-3 EF-4	CONNECT CEILING EXHAUST FAN, 50W, 120 VOLTS, FAN HAS BUILT-IN SAFETY SWITCH. INTERLOCK WITH ROOM LIGHT SWITCH. CIRCUIT ¾"C WITH 1-#12 & 1-#12 GND.	
EF-5	CONNECT INLINE EXHAUST FAN, 116W, 120 VOLTS, FAN HAS BUILT-IN SAFETY SWITCH. INTERLOCK WITH ROOM LIGHT SWITCH. CIRCUIT ¾"C WITH 1-#12 & 1-#12 GND.	
EF-6	CONNECT INLINE EXHAUST FAN, ¼ HP, 120 VOLTS, FANS HAVE BUILT-IN SAFETY SWITCH. CIRCUIT ¾"C WITH 1-#12 & 1-#12 GND. CONNECT FOR 24/7 OPERATION.	
EF-7	CONNECT ROOFTOP FAN EF-7, ½ HP, 120 VOLTS, 1Ø. FAN HAS BUILT-IN DISCONNECT MEANS. CIRCUIT ¾"C WITH 1-#12 & 1-#12 GND. CONNECT THRU MOTOR CONTROLLER, SEE MECHANICAL PLANS FOR CONTROLLER LOCATION.	
EF-8	CONNECT ROOFTOP FAN EF-8, 2 HP, 208V-3Ø. FAN HAS BUILT-IN DISCONNECT MEANS. CIRCUIT ¾"C WITH 3-#12 & 1-#12 GND. CONNECT THRU MOTOR CONTROLLER, SEE MECHANICAL PLANS FOR CONTROLLER LOCATION. PROVIDE INTERLOCK WITH AIR INTAKES #H-1 (120V MOTORIZED DAMPER).	
EF-10	CONNECT UTILITY EXHAUST FAN EF-10, 3 HP, 208V-3Ø. FAN HAS BUILT-IN DISCONNECT MEANS. CIRCUIT ¾"C WITH 3-#12 & 1-#12 GND. CONNECT THRU MOTOR CONTROLLER, SEE MECHANICAL PLANS FOR CONTROLLER LOCATION.	
IH-1	CONNECT POWER SUPPLIES FOR 120 VOLT INTAKE DAMPERS. PROVIDE 20 AMP, MOTOR RATED SPST SWITCH AT CONNECTION POINTS AND INTERLOCK WITH EXHAUST FAN. COORDINATE WITH MECHANICAL.	

NOTES THIS SHEET

- LOCATION OF OIL INTERCEPTOR ALARM PANEL. 120V CONNECTION TO CIRCUIT SP-83. SEE PLUMBING DRAWINGS, PANEL MUST BE INSTALLED EVEN IF NOT REQUIRED BY CODE.
- CONNECT TO LOCAL LIGHTING CIRCUIT SERVING THIS AREA. FAN SHALL BE SWITCHED WITH LIGHTING.
- CONNECT TO LOCAL LIGHTING CIRCUIT SERVING THIS AREA. CONNECT TO CIRCUIT AHEAD OF SWITCHING. FAN SHALL RUN CONTINUOUSLY OR VIA THERMOSTAT.
- EQUIPMENT LOCATED ON THE ROOF.
- EQUIPMENT LOCATED ABOVE CEILING.
- EQUIPMENT LOCATED BELOW CEILING.

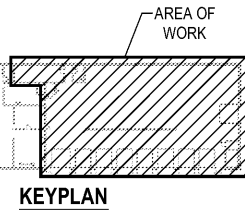
DRAWING E-202 GENERAL NOTES

- CONTRACTOR SHALL REFERENCE ARCHITECTURAL DRAWINGS FOR LOCATIONS, HEIGHTS, & COORDINATION WITH OTHER TRADES OF ELECTRICAL WORK.
- CONDUIT AND CABLES IN CONCEALED OR EXPOSED AREAS SHALL BE INSTALLED AND SUPPORTED SUCH THAT THERE IS A MINIMUM OF 1¼" SPACE BETWEEN CABLE AND/OR CONDUIT AND ROOF DECKING.
- ELECTRICAL CONTRACTOR SHALL COORDINATE FINAL LOCATIONS AND EXACT REQUIREMENTS OF SHOP EQUIPMENT, LIFTS AND ALIGNMENT RACK WITH OTHER AND EQUIPMENT VENDOR PRIOR TO ROUGH-IN.



1 SHOP AREA FLOOR PLAN - HVAC & PLUMBING CONNECTIONS
SCALE: 3/16" = 1'-0"

HAZARDOUS LOCATION NOTE:
PER NEC 511.2
THE AAA SPACE IS A MINOR REPAIR GARAGE. PER NEC 511.3 (D)(2) CEILING AREAS WHERE LIGHTER-THAN-AIR FUELS (SUCH AS NATURAL GAS OR HYDROGEN) WILL NOT BE TRANSFERRED, SUCH LOCATIONS SHALL BE UNCLASSIFIED.



Order Plans

THE AUTO CLUB GROUP
AAA - CAR CARE CENTER
TAMPA, FL 33607
1701 NORTH WESTSHORE BLVD.

This item has been digitally signed and sealed by William Lee Teeter, PE on 06/22/2018 using a Digital Signature.
Printed copies of this document are not considered signed and sealed and the digital authentication code cannot be verified on any electronic copies.



If this document is sealed and signed in a digital or electronic format and is received from someone other than the sealing professional identified in the document, you must contact the sealing professional in writing to validate the authenticity of the document. The sealing professional guarantees the seal and signature and shall not be liable for any liability associated with it where the authenticity of any digital or electronic seal or signature has not been validated in this manner.

ISSUANCE

REVISIONS

NO.	DATE	DESCRIPTION

FILE NUMBER: 18030
PROJECT MANAGER:
PROFESSIONAL:
DRAWN BY: CLE
CHECKED BY: WLT

SHOP AREA FLOOR PLAN - HVAC & PLUMBING CONNECTIONS
E-204

PROGRESSIVE ARCHITECTURE ENGINEERING, P.C.
330 South Tynon St., Suite 500 | Charlotte, NC 28202 | 704.721.5900 | www.progressiveae.com