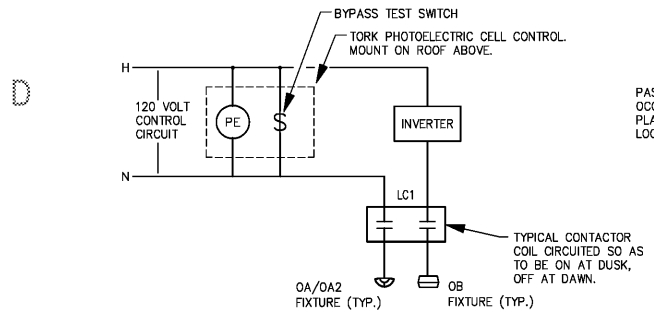
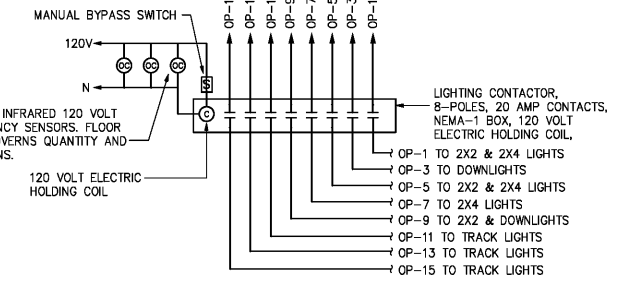




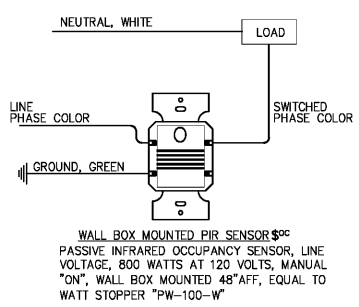
TEETER ENGINEERING GROUP, P.A.
5560 77 CENTER DRIVE • SUITE 140 • CHARLOTTE, NC 28217
704.374.2959 • WWW.TEGPA.COM • INFO@TEGPA.COM
TEETER ENGINEERING GROUP, P.A. FLORIDA LICENSE # 6380



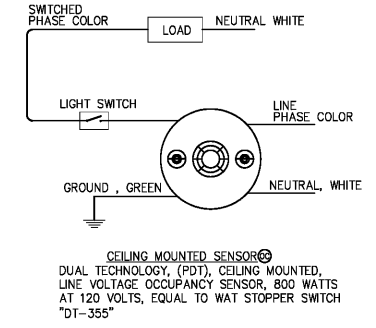
2 LIGHTING CONTROLS
NOT TO SCALE



3 RETAIL AREA LIGHTING CONTROLS
DIAGRAMMATIC



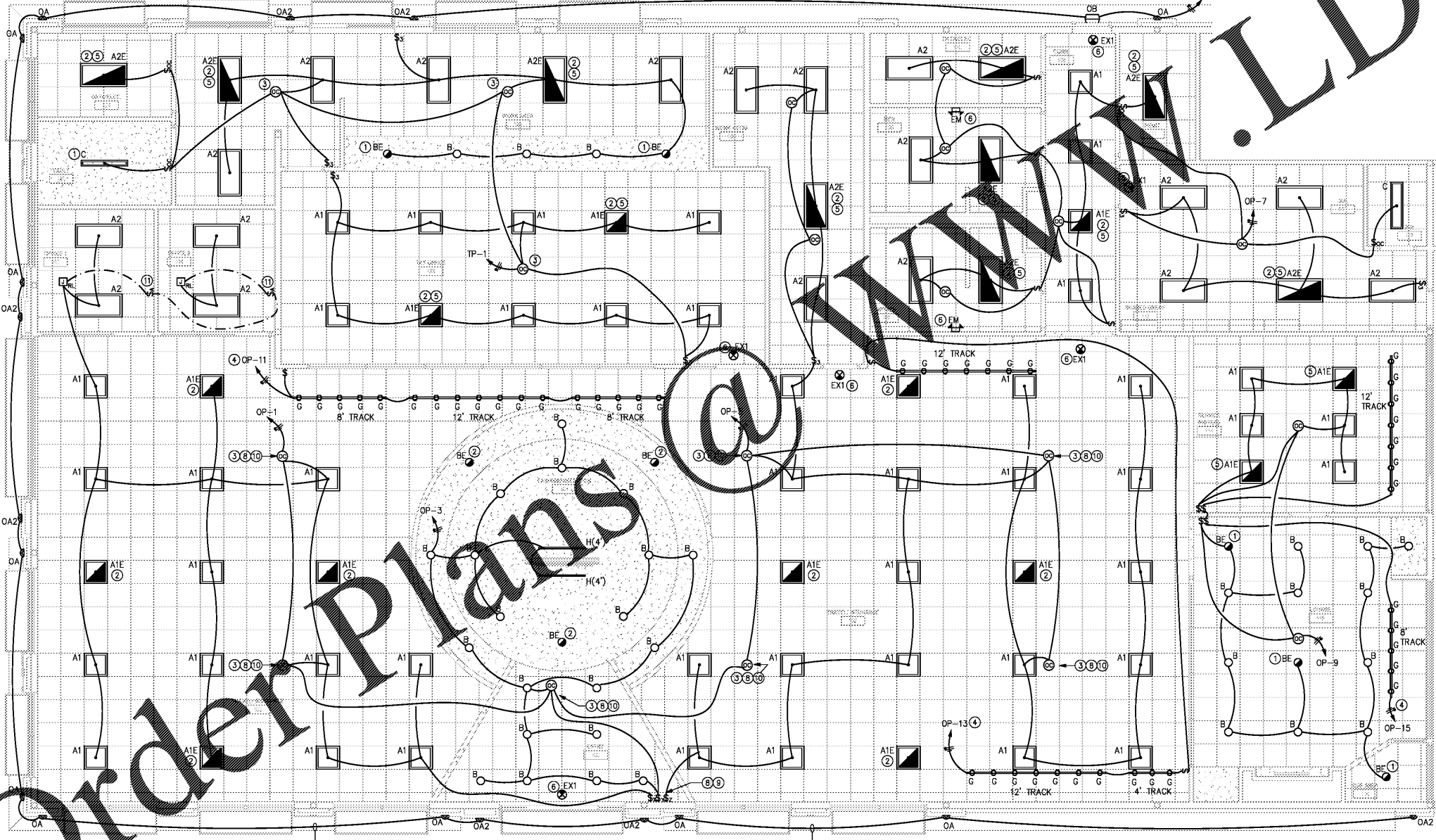
4 OCCUPANCY SENSOR LIGHTING CONTROLS
DIAGRAMMATIC



5 SWITCHED EMERGENCY LIGHTING DETAIL
NO SCALE

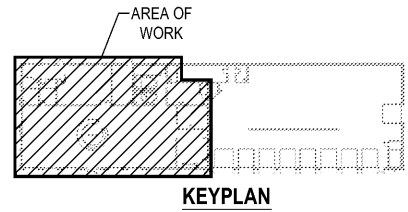
\$X	\$Y	\$Z
OP-1 INSURANCE/TRAVEL/ RETAIL	OP-3 CASHIER/RECEPTION	OP-5 INSURANCE/TRAVEL/ RETAIL

6 SWITCH BANK DETAIL
NOT TO SCALE



1 RETAIL AREA FLOOR PLAN - LIGHTING
SCALE: 3/16" = 1'-0"

- DRAWING E-101 KEYNOTES**
- 1 PROVIDE A FLANGE KIT FOR FIXTURES MOUNTED IN GYP. CEILING (TYPICAL).
 - 2 PROVIDE AN UNSWITCHED HOT TO THE EMERGENCY BATTERY AS REQUIRED.
 - 3 CONNECT FIXTURES SUCH THAT ACTIVATION OF ANY OCCUPANCY SENSOR SHALL ILLUMINATE ALL FIXTURES IN THIS SPACE.
 - 4 VIA LIGHTING CONTACTOR AND CURRENT LIMITING CIRCUIT BREAKER.
 - 5 SEE SWITCHED EMERGENCY LIGHTING DETAIL 5/E-101.
 - 6 CONNECT EMERGENCY LIGHTING AND EXIT SIGNS IN THE OFFICE/RETAIL AREA TO CIRCUIT OP-17, U.O.N.
 - 7 PROVIDE FIXTURE WITH A FLANGE FOR INSTALLATION IN GYPSUM CEILINGS.
 - 8 SEE DETAIL 6/E-101 FOR RETAIL AREA LIGHTING CONTROLS.
 - 9 MANUAL SWITCH FOR SALES AREA LIGHTING. COORDINATE EXACT LOCATION WITH OWNER/ARCHITECT PRIOR TO ROUGH-IN. SEE DETAIL #6/E-101 THIS SHEET.
 - 10 WATT STOPPER #DT-355 OCCUPANCY SENSOR. SEE DETAIL 4/E-101 FOR ADDITIONAL INFORMATION.
 - 11 PROVIDE ABOVE CEILING MOUNTED RELAY LMRC-101, REFER TO LIGHTING/PLUG LOAD WRING DIAGRAM ON DETAIL 2/E-003 TO COMPLY WITH ENERGY EFFICIENCY CODE SECTION C405.7.1
 - 12 PROVIDE A DUAL LITE LC SERIES LIGHTING INVERTER. DUAL LITE #LG 1 S. SEE PLAN FOR LOCATION. MOUNT ABOVE ACCESSIBLE CEILING AND PROVIDE A PHENOLIC LABEL ON THE GRID BAR TO DESIGNATE LOCATION FOR FUTURE MAINTANANCE. PROVIDE AN UNSWITCHED HOT TO THE INVERTER FOR CONNECTION TO THE BATTERY. SEE DETAIL #2 THIS SHEET.
- DRAWING E-101 GENERAL NOTES**
1. ELECTRICAL CONTRACTOR SHALL COORDINATE INSTALLATION OF ALL LIGHT FIXTURES WITH MECHANICAL DUCT PRIOR TO ROUGH-IN.
 2. CONDUIT AND CABLES IN CONCEALED OR EXPOSED AREAS SHALL BE INSTALLED AND SUPPORTED SUCH THAT THERE IS A MINIMUM OF 1-1/2" SPACE BETWEEN CABLE AND/OR CONDUIT AND ROOF DECKING.



PROGRESSIVE ARCHITECTURE ENGINEERING, P.C.
330 South Tynon St. Suite 600 | Charlotte, NC 28202 | 704.731.6900 | www.progressiveae.com

THE AUTO CLUB GROUP
AAA - CAR CARE CENTER
TAMPA, FL 33607
1701 NORTH WESTSHORE BLVD.

This item has been digitally signed and sealed by:
William Lee Teeter, PE and David A. Hill, PE
Digital Signature
Printed copies of this document are not considered signed and sealed and the PE authentication code must be verified on any electronic copies.



If this document is sealed and signed in a digital or electronic format and is received from someone other than the sealing professional identified in the document, you must contact the sealing professional in writing to validate the authority of the document. The sealing professional disclaims the seal and signature and shall not be liable for any liability associated with it where the authority of any digital or electronic seal or signature has not been validated in this manner.

ISSUANCE

REVISIONS
NO. DATE DESCRIPTION

FILE NUMBER 18030
PROJECT MANAGER
PROFESSIONAL
DRAWN BY CLE
CHECKED BY WLT

RETAIL AREA FLOOR PLAN - LIGHTING
E-101