

KEYNOTES THIS SHEET

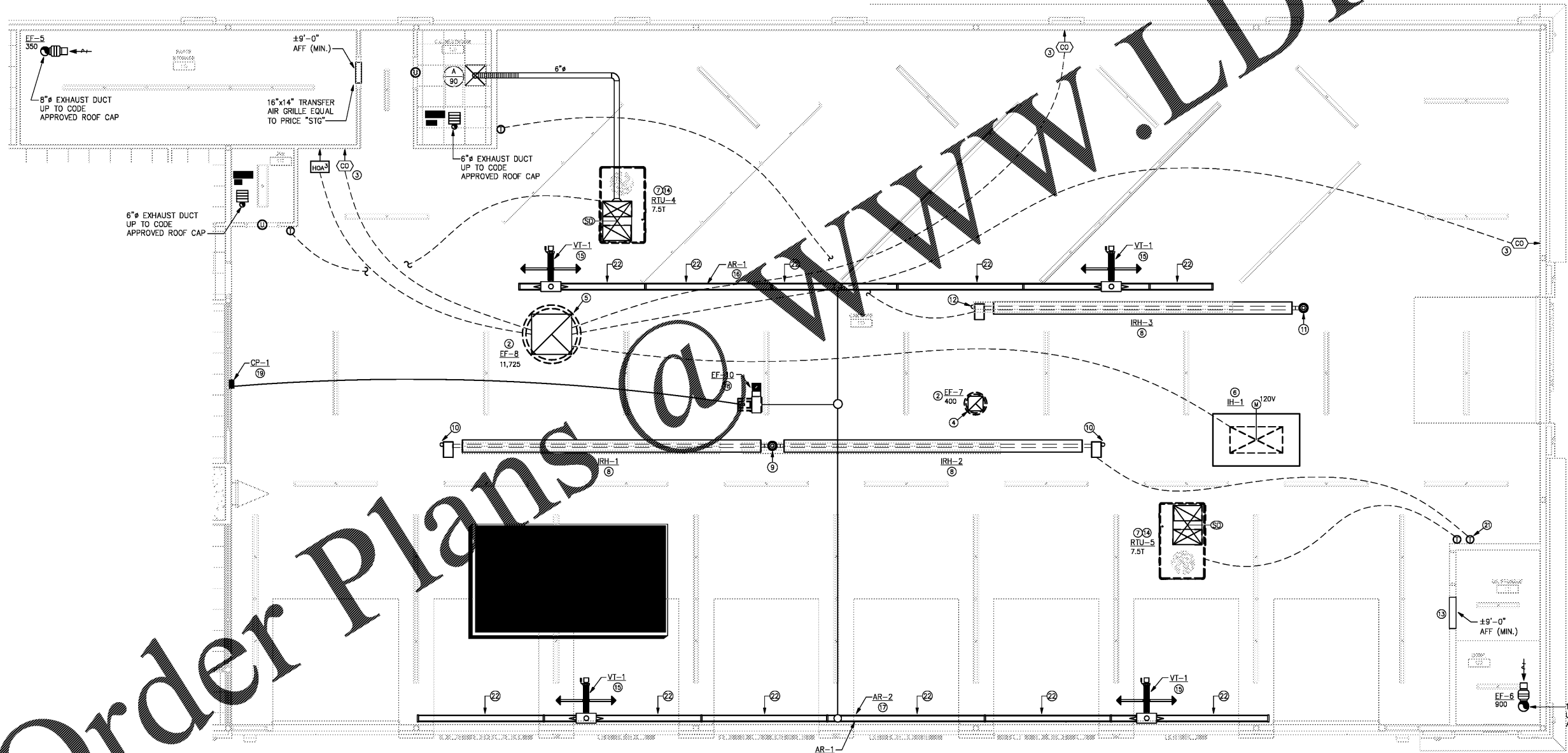
- ① SEE SHEET M-001 FOR GENERAL MECHANICAL NOTES, SCHEDULES AND SPECIFICATIONS. SEE SHEET M-004 FOR DETAILS.
- ② EXHAUST FAN ON ROOF. FIELD VERIFY EXACT INSTALLATION LOCATION PRIOR TO ROUGHING-IN.
- ③ PROVIDE CO DETECTOR. DETECTOR TO BE INTERLOCKED W/FAN EF-8 TO ENERGIZE @ 25ppm. PROVIDE HOA FOR EXHAUST FAN OPERATION AS NEEDED SET TO 'AUTO' POSITION.
- ④ MECHANICAL CONTRACTOR SHALL INSTALL 12"x8" DUCT FROM EXHAUST FAN TO 18" BELOW STRUCTURE, CAPPED WITH EGGRATE GRILLE EQUAL TO GREENHECK "80". COORDINATE WITH STRUCTURE AND SPACE CONDITIONS TO AVOID CONFLICT.
- ⑤ MECHANICAL CONTRACTOR SHALL INSTALL 40"x30" DUCT FROM EXHAUST FAN TO 18" BELOW STRUCTURE, CAPPED WITH EGGRATE GRILLE EQUAL TO GREENHECK "80". COORDINATE WITH STRUCTURE AND SPACE CONDITIONS TO AVOID CONFLICT.
- ⑥ INTAKE HOOD (IH-1) LOCATED ON ROOF AS MAKE-UP AIR FOR EF-8 (11,725 CFM). PROVIDE WITH 120V MOTORIZED ACTUATOR INTERLOCKED WITH EF-8 TO OPEN HOOD UPON ENERGIZING OF EXHAUST FAN. COORDINATE EXACT LOCATION OF INTAKE HOOD WITH OWNER AND STRUCTURAL PRIOR TO ROUGHING-IN.
- ⑦ EACH ROOFTOP UNIT PROVIDED WITH A DUCT MOUNTED SMOKE DETECTOR.
- ⑧ INFRARED TUBE HEATER, SUSPENDED FROM STRUCTURE, 45° ANGLE FROM HORIZONTAL FROM BOTH SIDES. INSTALL HEATER PER MANUFACTURER'S RECOMMENDATIONS AND CLEARANCES. FIELD VERIFY MOUNTING HEIGHT AND EXACT LOCATIONS. COORDINATE WITH OTHER TRADES. EQUIPMENT INSTALLED IN THIS AREA TO AVOID CONFLICTING. TWO HEATERS SHALL BE CONTROLLED BY A COMMON THERMOSTAT.
- ⑨ ROUTE 4" FLUE VENT TO 6" COMMON TYPE "B" FLUE VENT UP TO ROOF, TERMINATE WITH AN APPROVED FLUE CAP, 24" ABOVE ROOF. OFFSET AS REQUIRED TO MAINTAIN A MIN. 10" FROM FRESH AIR INTAKE. SEE "INDOOR COMBUSTION AIR CALCULATION" - SHEET M2.2 FOR COMBUSTION/VENTILATION REQUIRED.
- ⑩ ROUTE 4" COMBUSTION AIR INLET UP TO ROOF CAP. AIR INLET SHOULD NOT BE LESS THAN 3 FT EITHER VERTICAL OR HORIZONTALLY FROM FLUE VENT TERMINATION. FIELD VERIFY EXACT ROUTING.
- ⑪ ROUTE 4" COMBUSTION AIR INLET UP TO ROOF CAP. AIR INLET SHOULD NOT BE LESS THAN 3 FT EITHER VERTICAL OR HORIZONTALLY FROM FLUE VENT TERMINATION. FIELD VERIFY EXACT ROUTING TO AVOID CONFLICTING WITH OTHER TRADES.
- ⑫ ROUTE 4" TYPE "B" FLUE VENT UP TO ROOF, TERMINATE WITH AN APPROVED FLUE CAP, 24" ABOVE ROOF. OFFSET AS REQUIRED TO MAINTAIN A MIN. 10" FROM FRESH AIR INTAKE. SEE "INDOOR COMBUSTION AIR CALCULATION" - SHEET M2.2 FOR COMBUSTION/VENTILATION REQUIRED.
- ⑬ TWO(2) 36"x36" TRANSFER GRILLES ON EACH SIDE OF WALL /W OPEN WALL CAVITY BETWEEN GRILLES EQUAL TO PRICE "STG", STAINLESS STEEL TRANSFER GRILLE. PAINT TO MATCH WALL.
- ⑭ ROOFTOP UNIT ON FACTORY 14" ROOF CURB WITH DROP BOX DIFFUSERS. TRANSITION FROM FULL SIZE OF UNIT OPENING TO FULL SIZE OF DROP BOX DIFFUSERS, 12" BELOW THE BOTTOM OF THE BAR JOIST. INSTALL SUCH THAT BOX IS CENTERED BETWEEN THE BAR JOISTS. FIELD VERIFY EXACT LOCATION. DROP BOX DIFFUSERS EQUAL TO "PLENUMS INCORPORATED" MODEL TDUA3608. EXTEND RETURN DUCT DOWN SO THE DUCT MOUNTED SMOKE DETECTOR IS MOUNTED 18" BELOW ROOF DECK.
- ⑮ VI-1: ASCENT SYSTEMS VACUUM HOLSTER TROLLEY MODEL # VH-417EC, INCLUDES 4" X 17' COMBINATION HOSE, 443TA TAILPIPE ADAPTER WITH NEOPRENE BOOT, ADJUSTABLE CONNECTOR & SS DAMPER, TROLLEY ASSEMBLY AR-H101-4. HOLSTERS SUPPLIED IN BLACK UNLESS CALLED OUT OTHERWISE.
- ⑯ AR-1: ASCENT SYSTEMS APEX RAIL. 66' OVERALL LENGTH. INCLUDES 5.5 SECTIONS OF 12' RAIL; 1 - 8" DUCT-RAIL CAPS, (#AR-R105); 5 EXTERIOR COUPLINGS (#AR-R104); TRANSITION; 132' OF RUBBER SEAL (#AR-R102); 2 END AR-R107 SUSPENSION BRACKET ADAPTER, AND 10 INTERIOR COUPLINGS (#AR-R103); 6 OF
- ⑰ AR-2: ASCENT SYSTEMS APEX RAIL. 81' OVERALL LENGTH. INCLUDES 3 SECTIONS OF 12' RAIL; 3 SECTIONS OF 15' RAIL; 1 - 8" CAPS, (#AR-R105); 5 EXTERIOR COUPLINGS (#AR-R104); DUCT TO RAIL TRANSITION; 162' OF RUBBER SEAL (#AR-R102); 2 END AR-R107 SUSPENSION BRACKET ADAPTER, AND 10 INTERIOR COUPLINGS (#AR-R103); 7 OF
- ⑱ EF-10: ASCENT SYSTEMS MODEL: BD-15-30 EXHAUST FAN, RATED AT - 1800 CFM @ 6.8" SP. ALTITUDE 500' 3.0 HP, 208-230/460/3/60 TEFC MOTOR ARR 4 CONFIGURATION. INCLUDES RIS ISOLATORS AND BIRDSCREEN.
- ⑲ CP-1: CONTROLLED WALL MOUNTED STARTER WITH FACE PLATE ON/OFF/RESET MANUAL CONTROLS. REMOTE START OPTIONAL.
- ⑳ ASCENT SYSTEMS ADVANCED EXHAUST TROLLEY REMOVAL SYSTEM. PROVIDE RAIL AT LENGTHS AS SHOWN. FOR LENGTHS GREATER THAN 12'-0", CUSTOM ORDER TO SIZE" AS INDICATED. RAIL SYSTEM SHALL BE PROVIDED WITH ALL SEALS, SUSPENSION BRACKETS, COUPLINGS, END CAPS, SAFETY STOPS, DUCT TRANSITIONS, ETC. AS REQUIRED BY MANUFACTURER TO PROVIDE A COMPLETE WORKING SYSTEM. COORDINATE REQUIREMENTS WITH ASCENT SYSTEMS AND FIELD CONDITIONS PRIOR TO ORDERING. COORDINATE INSTALLATION WITH BAY DOOR CONTRACTOR. RAIL SYSTEM TO BE INSTALLED BELOW EACH BAY DOOR AT APPROXIMATELY 12'-4" A.F.F. AND 2'-0" FROM EXTERIOR WALL. COORDINATE EXACT INSTALLATION LOCATION PRIOR TO ROUGHING-IN.
- ㉑ 7-DAY PROGRAMMABLE THERMOSTAT INSTALLED TO CONTROL BOTH IH-1 & IH-2. COORDINATE EXACT LOCATION OF THERMOSTAT PRIOR TO ROUGHING-IN.

**VENTILATION NOTES**

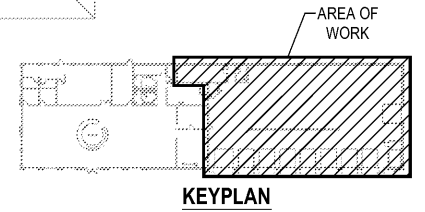
CAR CARE AREA: 2017 FBC (MECHANICAL), TABLE 403.3, REQUIRES 1.5 CFM/SF OF VENTILATION AIR. ENGINEERED ALTERNATE MEANS ARE UTILIZED TO COMPLY. NORMAL OPERATING MODE IS FOR EXHAUST FAN, EF-8, TO OPERATE AND PROVIDE VENTILATION AT 0.05 CFM/SF. IN CONJUNCTION A VEHICLE EXHAUST SYSTEM IS UTILIZED WITH ONE HOSE DROP PER 2 SERVICE BAYS. CO MONITORS ARE PROVIDED TO AUTOMATICALLY ENERGIZE EXHAUST FAN, EF-8, AND ENERGIZE THE ROOFTOP UNIT, RTU-5, WHEN CO LEVELS REACH 25PPM. FAN EF-8 IS DESIGNED TO VENTILATE THE SERVICE BAYS AT THE RATE OF 1.5 CFM/SF SATISFYING 403.3.



THE AUTO CLUB GROUP  
**AAA - CAR CARE CENTER**  
**TAMPA, FL 33607**  
 1701 NORTH WESTSHORE BLVD.



1 **SHOP AREA FLOOR PLAN - MECHANICAL**  
 SCALE: 3/16" = 1'-0"



This item has been digitally signed and sealed by M. Michael Adams, PE on 02-22-2024 using a Digit Signature.  
 Printed copies of this document are not considered signed and sealed and the 2Dx authentication code must be verified on any electronic copies.



If this document is sealed and signed in a digital or electronic format and is received from someone other than the sealing professional identified in the document, you must contact the sealing professional in writing to validate the authority of the document. The sealing professional guarantees the seal and signature and shall not be liable for any liability associated with it where the authority of any digital or electronic seal or signature has not been validated in this manner.

ISSUANCE

NO.	DATE	DESCRIPTION

FILE NUMBER	18030
PROJECT MANAGER	
PROFESSIONAL	DRH
DRAWN BY	MMS
CHECKED BY	

SHOP AREA FLOOR PLAN - MECHANICAL  
**M-102**

Order Plans