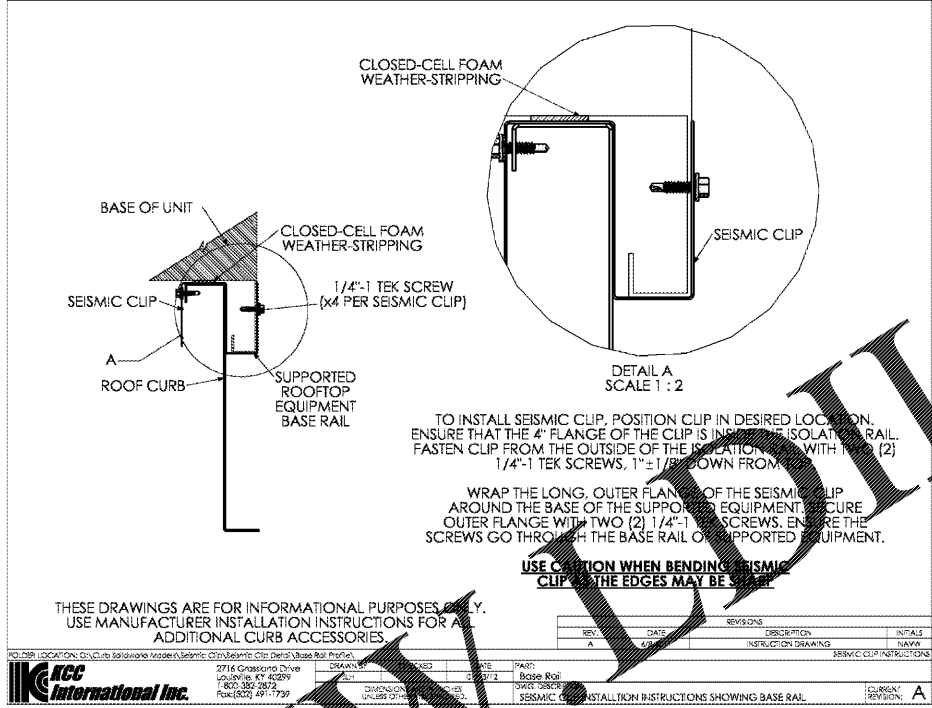


**Method of Attachment**

Use a minimum of two clips per side at corners, and the clips should not be spaced more than 36\"/>

<b>KCC International</b>	2716 Grassland Drive Louisville, KY 40299 1-800-382-2872 Fax: (502) 491-1739	NAME: C. PIERCE	DATE:	DWG. NAME: Equipment Hold Down Clip	REV: A
		DRAWN:			
		CHECKED:	DWG. DESCR: Install Detail		
		ENGR. APPL:			



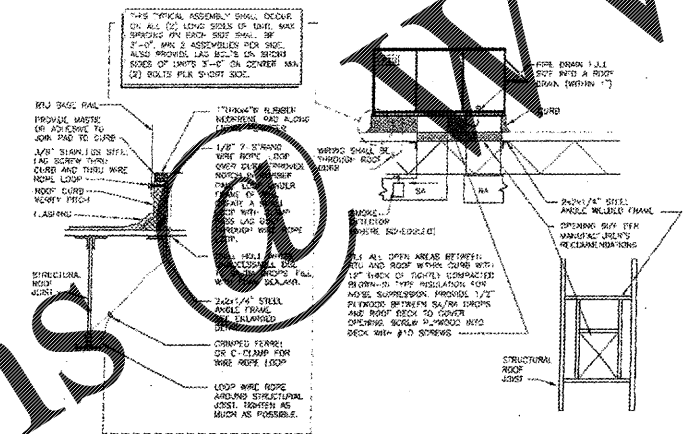
TO INSTALL SEISMIC CLIP, POSITION CLIP IN DESIRED LOCATION. ENSURE THAT THE 4\"/>

WRAP THE LONG, OUTER FLANGE OF THE SEISMIC CLIP AROUND THE BASE OF THE SUPPORTED EQUIPMENT. SECURE OUTER FLANGE WITH TWO (2) 1/4\"/>

**USE CAUTION WHEN BENDING SEISMIC CLIP AS THE EDGES MAY BE SHARP.**

THESE DRAWINGS ARE FOR INFORMATIONAL PURPOSES ONLY. USE MANUFACTURER INSTALLATION INSTRUCTIONS FOR ALL ADDITIONAL CURB ACCESSORIES.

<b>KCC International Inc.</b>	2716 Grassland Drive Louisville, KY 40299 1-800-382-2872 Fax: (502) 491-1739	DRAWN:	DATE:	PART:	REVISION:
				Roof Rail	INSULATION DRAWING
		DWG. NO:	DWG. DATE:	DWG. REVISION:	COURTESY:
				SEISMIC CLIP INSTALLATION INSTRUCTIONS SHOWING BASE RAIL	A



**ROOF TOP UNIT INSTALLATION AND HURRICANE REINFORCEMENT DETAIL**  
REMOVE UP TO 135 MPH WIND FORCE NOT TO SCALE

**NOTE:**  
ALL ROOFTOP MECHANICAL EQUIPMENT INSTALLED ON A ROOF CURB SHALL BE SECURED TO MEET STANDARDS PRESCRIBED IN THE 2014 5TH EDITION FLORIDA BUILDING CODE, MECHANICAL SECTION 301.15.



**TEETER ENGINEERING GROUP, P.A.**  
RELIABILITY • COLLABORATION • DEDICATION • EXCELLENCE  
5500 77 CENTER DRIVE • SUITE 140 • CHARLOTTE, NC 28217  
704.376.2999 • WWW.TEGPA.COM • INFO@TEGPA.COM  
TEETER ENGINEERING GROUP, P.A. HOLDS RESERVES TO ENGINEER LAW, ENGINEER ARCHITECTURE AND ALL OTHER PROPERTY RIGHTS TO THESE DOCUMENTS AND ASSOCIATED PROJECTS.  
CONCEPT, DETAILS AND DESIGN THESE DOCUMENTS, SPECIFICATIONS, CONTRACTS, AGREEMENTS, PERMITS, AND ALL OTHER DOCUMENTS SHALL BE THE PROPERTY OF TEETER ENGINEERING GROUP, P.A. AND NO PART OF THESE DOCUMENTS SHALL BE REPRODUCED, COPIED, OR TRANSMITTED IN ANY FORM OR BY ANY MEANS, ELECTRONIC OR MECHANICAL, INCLUDING PHOTOCOPYING, RECORDING, OR BY ANY INFORMATION STORAGE AND RETRIEVAL SYSTEM, WITHOUT THE WRITTEN PERMISSION FROM TEETER ENGINEERING GROUP, P.A. ANY ELECTRONIC AND COMPUTER FILES ARE THE PROPERTY OF TEETER ENGINEERING GROUP, P.A. AND NO PART OF THESE DOCUMENTS SHALL BE REPRODUCED, COPIED, OR TRANSMITTED IN ANY FORM OR BY ANY MEANS, ELECTRONIC OR MECHANICAL, INCLUDING PHOTOCOPYING, RECORDING, OR BY ANY INFORMATION STORAGE AND RETRIEVAL SYSTEM, WITHOUT THE WRITTEN PERMISSION FROM TEETER ENGINEERING GROUP, P.A.  
**TEETER ENGINEERING GROUP, P.A.**  
FLORIDA LICENSE # 6380

THE AUTO CLUB GROUP

**AAA - CAR CARE CENTER**  
**TAMPA, FL 33607**  
1701 NORTH WESTSHORE BLVD.



If this document is sealed and signed in a digital or electronic format and is received from someone other than the sealing professional certified in the document, you must contact the sealing professional in writing to validate authenticity of the document. The sealing professional declares the seal and signature are not to be held for any liability associated with it where the authenticity of any digital or electronic seal or signature has not been validated in the manner.

**ISSUANCE**

REVISIONS	
NO.	DESCRIPTION

FILE NUMBER	18030
PROJECT MANAGER	
PROFESSIONAL	
DRAWN BY	DRH
CHECKED BY	MMS

**MECHANICAL DETAILS**  
**M-004**