

NOTES THIS SHEET

① SEE SHEETS P-001 - P-002 FOR SCHEDULES, DETAILS AND SPECIFICATIONS.

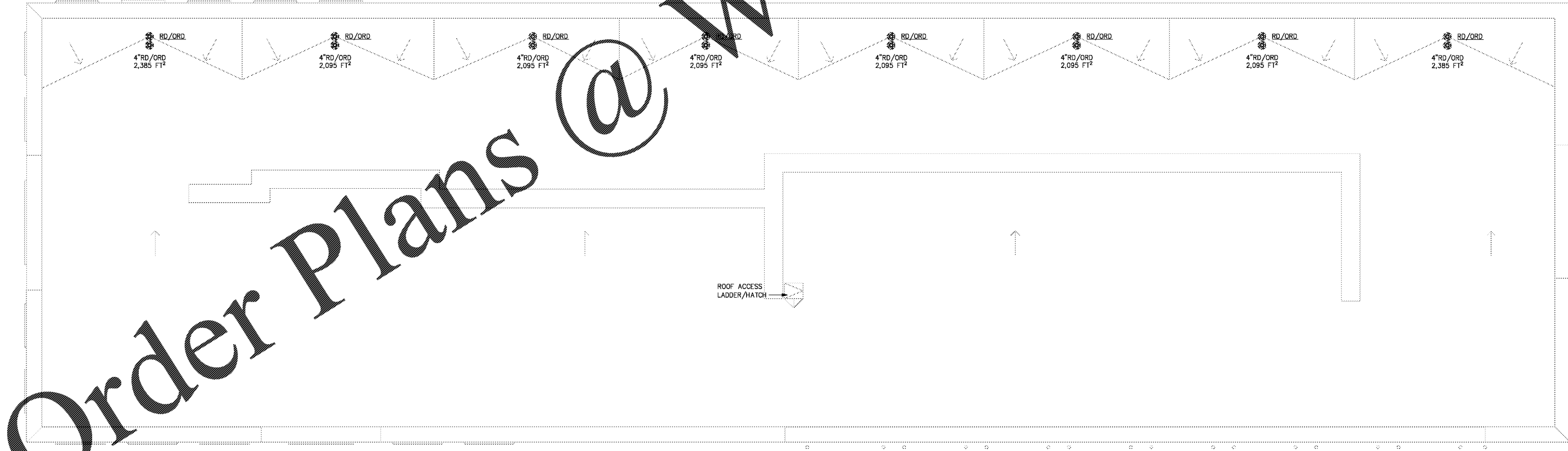


TEETER ENGINEERING GROUP, P.A.
RELIABILITY • COLLABORATION • DEDICATION • EXCELLENCE
5500 77 CENTER DRIVE • SUITE 140 • CHARLOTTE, NC 28217
704.376.2959 • WWW.TEGPA.COM • INFO@TEGPA.COM
TEETER ENGINEERING GROUP, P.A. IS AN EQUAL OPPORTUNITY EMPLOYER AND AFFIRMATIVE ACTION EMPLOYER.
CONCEPT, DESIGN AND CONSTRUCTION DOCUMENTS, WHICH INCLUDE CONTRACT DOCUMENTS, SHALL BE PREPARED, REVIEWED, APPROVED AND SEALED BY A REGISTERED PROFESSIONAL ENGINEER OR ARCHITECT IN THE STATE OF NORTH CAROLINA. ANY CHANGES TO THESE DOCUMENTS SHALL BE MADE BY THE REGISTERED PROFESSIONAL ENGINEER OR ARCHITECT IN THE STATE OF NORTH CAROLINA. ANY CHANGES TO THESE DOCUMENTS SHALL BE MADE BY THE REGISTERED PROFESSIONAL ENGINEER OR ARCHITECT IN THE STATE OF NORTH CAROLINA. ANY CHANGES TO THESE DOCUMENTS SHALL BE MADE BY THE REGISTERED PROFESSIONAL ENGINEER OR ARCHITECT IN THE STATE OF NORTH CAROLINA. ANY CHANGES TO THESE DOCUMENTS SHALL BE MADE BY THE REGISTERED PROFESSIONAL ENGINEER OR ARCHITECT IN THE STATE OF NORTH CAROLINA.
TEETER ENGINEERING GROUP, P.A.
FLORIDA LICENSE # 6380

THE AUTO CLUB GROUP
AAA - CAR CARE CENTER
TAMPA, FL 33607
1701 NORTH WESTSHORE BLVD.

PROGRESSIVE ARCHITECTURE ENGINEERING, P.C.
330 South Tylan St., Suite 500 | Charlotte, NC 28202 | 704.721.0300 | www.progressiveae.com

WWW.LDILine.com



Order Plans @

This item has been digitally signed and sealed by M. Michael Wilson, PE on 08-23-2023 using a Digit Signature.
Printed copies of this document are not considered signed and sealed and the DSA authentication code must be verified on any electronic copies.



If this document is sealed and signed in a digital or electronic format and is received from someone other than the sealing professional identified in the document, you must contact the sealing professional in writing to validate authenticity of the document. The sealing professional documents the seal and signature and shall not be liable for any liability associated with it where the authenticity of any digital or electronic seal or signature has not been validated in this manner.

ISSUANCE

REVISIONS

NO.	DATE	DESCRIPTION

FILE NUMBER	18030
PROJECT MANAGER	
PROFESSIONAL	
DRAWN BY	CLS
CHECKED BY	MMS

1 ROOF PLAN - PLUMBING
SCALE: 1/8" = 1'-0"