

- NOTES THIS SHEET**
- ① SEE SHEETS P-001 - P-002 FOR SCHEDULES, DETAILS AND SPECIFICATIONS.
 - ② PLUMBING CONTRACTOR SHALL MOUNT MIXING VALVE 8'-0" AFF. ROUTE TEMPERED WATER DOWN TO EMERGENCY FIXTURE.

TEG
TEETER ENGINEERING GROUP, P.A.
 RELIABILITY • COLLABORATION • DEDICATION • EXCELLENCE
 5500 77 CENTER DRIVE • SUITE 140 • CHARLOTTE, NC 28217
 704.376.2959 • WWW.TEGPA.COM • INFO@TEGPA.COM
TEETER ENGINEERING GROUP, P.A. IS AN EQUAL OPPORTUNITY EMPLOYER. ALL EMPLOYEES MUST BE LICENSED PROFESSIONALS IN THEIR RESPECTIVE FIELDS. ALL EMPLOYEES MUST BE LICENSED PROFESSIONALS IN THEIR RESPECTIVE FIELDS. ALL EMPLOYEES MUST BE LICENSED PROFESSIONALS IN THEIR RESPECTIVE FIELDS. ALL EMPLOYEES MUST BE LICENSED PROFESSIONALS IN THEIR RESPECTIVE FIELDS.
TEETER ENGINEERING GROUP, P.A.
 FLORIDA LICENSE # 6380

PROGRESSIVE ARCHITECTURE ENGINEERING, P.C.
 330 South Tynn St. Suite 500 | Charlotte, NC 28202 | 704.721.5090 | www.progressiveae.com

THE AUTO CLUB GROUP
AAA - CAR CARE CENTER
TAMPA, FL 33607
 1701 NORTH WESTSHORE BLVD.

This item has been digitally signed and sealed by M. Michael Adams, PE on 05-22-2024 using a Digit Signature.
 Printed copies of this document are not valid unless signed and sealed and the 2Dk authentication code must be verified on any electronic copy.



If this document is sealed and signed in a digital or electronic format and is received from someone other than the sealing professional identified in the document, you must contact the sealing professional in writing to validate the authority of the document. The sealing professional disclaims the seal and signature and shall not be liable for any liability associated with it where the authority of any digital or electronic seal or signature has not been validated in this manner.

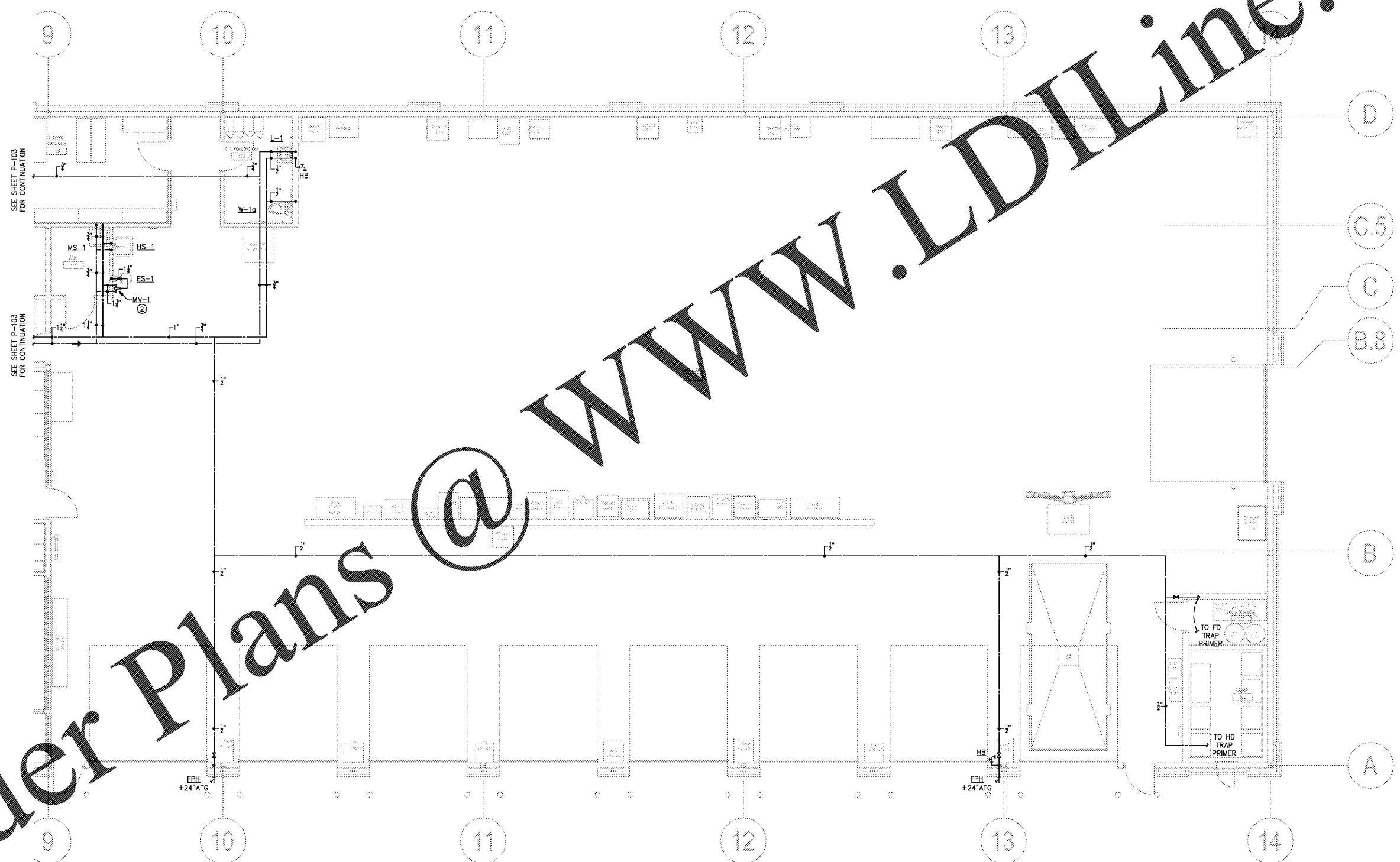
ISSUANCE

REVISIONS

NO.	DATE	DESCRIPTION

FILE NUMBER 18030
 PROJECT MANAGER
 PROFESSIONAL
 DRAWN BY CLS
 CHECKED BY MMS

SHOP AREA FLOOR PLAN - WATER
P-104



1 SHOP AREA FLOOR PLAN - WATER
 SCALE: 3/16" = 1'-0"

Order Plans @ www.LDITLine.com