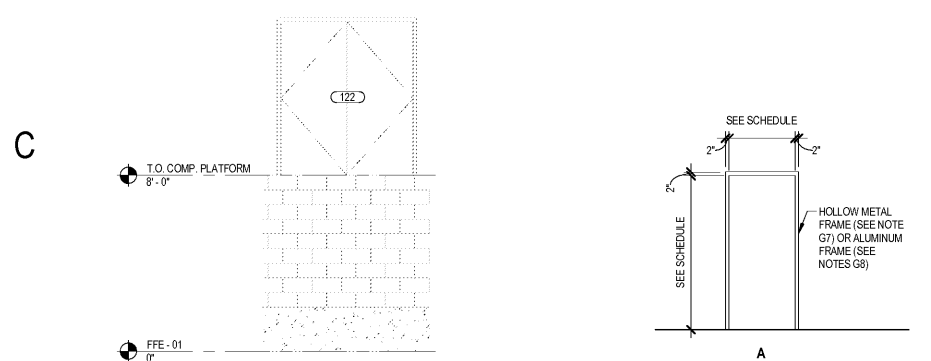
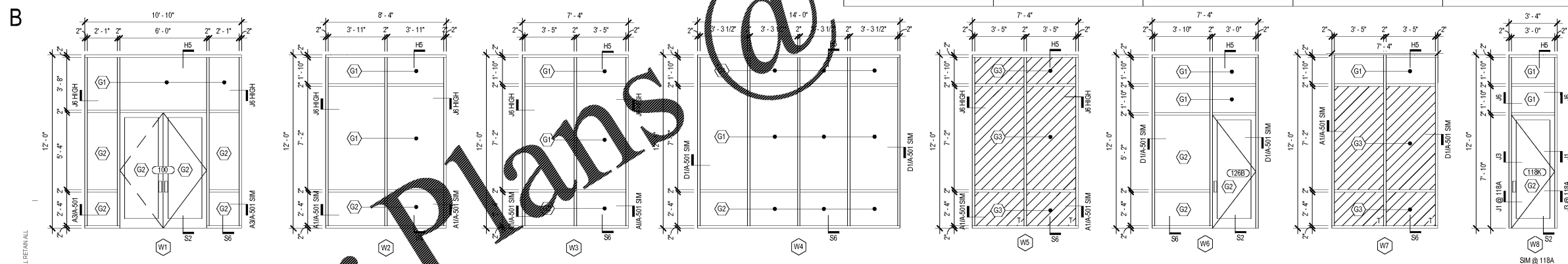


D1 DOOR - ELEVATIONS
SCALE: 1/4" = 1'-0"

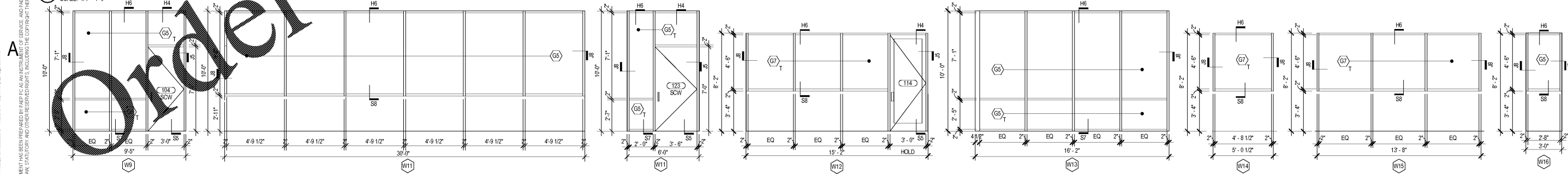


C1 DOOR ELEVATION @ COMPRESSOR PLATFORM
SCALE: 1/4" = 1'-0"

C2 DOOR - FRAME ELEVATION
SCALE: 1/4" = 1'-0"



B1 EXTERIOR STOREFRONT ELEVATIONS
SCALE: 1/4" = 1'-0"



A1 INTERIOR STOREFRONT ELEVATIONS
SCALE: 1/4" = 1'-0"

ROOM NAME	MARK	DOOR			FRAME			DETAILS			FIRE RATING	HDIR SET	NOTES		
		SIZE		MTL.	GLAZ.	ELEV.	MTL.	GLAZ.	ELEV.	HEAD				JAMB	SILL
		WIDTH	HEIGHT												
ENTRY	100	6'-0"	8'-0"	1 3/4"	AL/GL	3	AL	YES	W1A-602	N/A	N/A	S2	NA	1	PROVIDE CARD READER
OFFICE 1	103	3'-0"	7'-0"	1 3/4"	SCWD	1	AL	NO	W9A-601	H4	J5	S5	NA	7	
OFFICE 2	104	3'-0"	7'-0"	1 3/4"	SCWD	1	AL	NO	W9A-601	H4	J5	S5	NA	7	
WORK ROOM	106	3'-0"	7'-0"	1 3/4"	SCWD	1	HM	NO	A	H3	J4	S4	NA	3	
WOMEN'S RESTROOM	107	3'-0"	7'-0"	1 3/4"	SCWD	1	HM	NO	A	H3	J4	S4	NA	5	
CORR.	108	3'-0"	7'-0"	1 3/4"	HM	2	HM	NO	A	H1	J1 LOW & J7 HIGH	S2	NA	2	
MEN'S RESTROOM	109	3'-0"	7'-0"	1 3/4"	SCWD	1	HM	NO	A	H3	J4	S4	NA	5	
DATA/ELEC.	110	3'-0"	7'-0"	1 3/4"	SCWD	1	HM	NO	A	H3	J4	S4	NA	4	KEY OVERRIDE - ON SITE MASTER KEY SYSTEM
REMITTANCE	111	3'-0"	7'-0"	1 3/4"	SCWD	1	HM	NO	A	H3	J4	S4	NA	4	PROVIDE WIDE ANGLE CHROME SECURITY PEephole KEY FOR OWNER AUTHORIZED PERSONNEL. PROVIDE SERVICE COMPANIES TO REMOVE IC CONSTRUCTION CORES IN ORDER TO INSTALL PERMANENT KEY SYSTEM
SHARED BREAK	112A	3'-0"	7'-0"	1 3/4"	SCWD	1	HM	NO	A	H3	J4	S4	NA	3	
SHARED BREAK	112B	3'-0"	7'-0"	1 3/4"	HM	1	HM	NO	A	H3	J4	S4	NA	2	PROVIDE SMOKE/VAPOR SEAL @ THRESHOLD, WALL STOP
JANITOR'S CLOSET	113	3'-0"	7'-0"	1 3/4"	SCWD	1	HM	NO	A	H3	J4	S4	NA	3	NO CLOSER, KICK PLATE ON PUSH SIDE
SERVICE WRITERS	114	3'-0"	8'-0"	1 3/4"	AL/GL	2	AL	YES	W12A-601	H4	J5	S1	NA	2	PROVIDE SMOKE/VAPOR SEAL @ THRESHOLD, O.H. STOP
LOUNGE	115	3'-0"	8'-0"	1 3/4"	AL/GL	2	AL	YES	A	H4	J5	S1	NA	3	
JANITOR'S CLOSET	117	3'-0"	7'-0"	1 3/4"	HM	1	HM	NO	A	H3	J4	S4	NA	3	NO CLOSER, KICK PLATE ON PUSH SIDE
CAR CARE	118A	3'-0"	7'-10"	1 3/4"	AL/GL	2	AL	YES	W8A-601	N/A	J1 LOW & J7 HIGH / J3	S3	NA	2	
OVERHEAD DOORS	118B	12'-0"	12'-0"	1 3/8"	AL/GL	4	AL	YES	-	H2	J3 / J2 LOW & J6 HIGH	S3	NA	N/A	OVERHEAD DOOR, MOTORIZED WITH SENSOR
OVERHEAD DOORS	118C	10'-0"	12'-0"	1 3/8"	AL/GL	4	AL	YES	-	H2	J2 LOW & J6 HIGH	S3	NA	N/A	OVERHEAD DOOR
OVERHEAD DOORS	118D	10'-0"	12'-0"	1 3/8"	AL/GL	4	AL	YES	-	H2	J2 LOW & J6 HIGH	S3	NA	N/A	OVERHEAD DOOR
OVERHEAD DOORS	118E	10'-0"	12'-0"	1 3/8"	AL/GL	4	AL	YES	-	H2	J2 LOW & J6 HIGH	S3	NA	N/A	OVERHEAD DOOR
OVERHEAD DOORS	118F	10'-0"	12'-0"	1 3/8"	AL/GL	4	AL	YES	-	H2	J2 LOW & J6 HIGH	S3	NA	N/A	OVERHEAD DOOR
OVERHEAD DOORS	118G	10'-0"	12'-0"	1 3/8"	AL/GL	4	AL	YES	-	H2	J2 LOW & J6 HIGH	S3	NA	N/A	OVERHEAD DOOR
OVERHEAD DOORS	118H	10'-0"	12'-0"	1 3/8"	AL/GL	4	AL	YES	-	H2	J2 LOW & J6 HIGH	S3	NA	N/A	OVERHEAD DOOR
OVERHEAD DOORS	118J	10'-0"	12'-0"	1 3/8"	AL/GL	4	AL	YES	-	H2	J2 LOW & J6 HIGH	S3	NA	N/A	OVERHEAD DOOR
CAR CARE	118K	3'-0"	7'-10"	1 3/4"	AL/GL	2	AL	YES	W8A-601	N/A	J3 / J2 LOW & J7 HIGH	S2	NA	3	
OVERHEAD DOORS	118L	12'-0"	12'-0"	1 3/8"	AL/GL	4	AL	YES	-	H2	J3 / J2 LOW & J6 HIGH	S3	NA	N/A	OVERHEAD DOOR, MOTORIZED WITH SENSOR
PARTS STORAGE	119	3'-0"	7'-0"	1 3/4"	HM	1	HM	NO	A	H3	J4	S4	NA	4	KEY OVERRIDE - ON SITE MASTER KEY SYSTEM
CAR CARE RESTROOM	120	3'-0"	7'-0"	1 3/4"	HM	1	HM	NO	A	H3	J4	S4	NA	6	
OIL STORAGE	121	3'-0"	7'-0"	1 3/4"	HM	1	HM	NO	A	H3	J4	S4	NA	4	KEY OVERRIDE - ON SITE MASTER KEY SYSTEM
COMP. PLATFORM	122	6'-0"	7'-0"	1 3/4"	SCWD	1	HM	NO	A	H3	J4	S4	NA	3	
OIL ACCESS DOOR	122A	2'-0"	2'-0"	1 3/4"	HM	1	HM	NO	A	H3	J4	S4	NA	8	
WAITING	123	3'-6"	7'-0"	1 3/4"	SCWD	1	HM	NO	A	H3	J4	S4	NA	8	PROVIDE HOLD OPEN KICK STOP, PROVIDE CARD READER
DATA/ELEC.	124	3'-0"	7'-0"	1 3/4"	SCWD	1	HM	NO	A	H3	J4	S4	NA	8	PROVIDE CARD READER
VAULT	125	3'-0"	7'-0"	1 3/4"	SCWD	1	HM	NO	A	H3	J4	S4	NA	8	PROVIDE CARD READER
TAX OFFICE	126A	3'-0"	7'-0"	1 3/4"	SCWD	1	HM	NO	A	H3	J4	S4	NA	8	PROVIDE CARD READER
TAX OFFICE	126B	3'-0"	7'-10"	1 3/4"	AL/GL	2	AL	YES	A	H3	J1	S2	NA	2	PROVIDE CARD READER

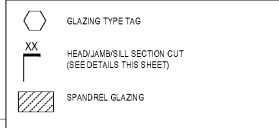
HARDWARE SETS

- SET #1 - ENTRY**
CLOSER W/ INTEGRATED OVERHEAD SPRING STOP
AR 4900 DEADLATCH
AR 4951 DEADLATCH PADDL
AR 4951 DEADLATCH PADDL (R FRONT) (R ONLY)
ELECTRICAL COMBINATION FOR CARD READER
EXIT DEVICE FOR CYLINDER
OFFSET PRIVACY CYLINDER
WEATHERSTRIP (EXTERIOR ONLY)
- SET #2 - MEN & WOMEN RESTROOMS**
CLOSER
WALL STOP
PUSH/PULL SET
KICK PLATE ON PUSH SIDE
DOOR SILENCERS
- SET #3 - WORK ROOM, BREAK ROOM, JANITOR'S CLOSET, LOUNGE, AIR COMP.**
CLOSER W/ INTEGRATED OVERHEAD SPRING STOP
PASSAGE SET
BUTT HINGES
DOOR SILENCERS
- SET #4 - DATA/ELEC., REMITTANCE, PARTS, OIL STORAGE**
CLOSER W/ INTEGRATED OVERHEAD SPRING STOP
KABA POWERPLEX 2000 SERIES P2031XSL-626-41
ELECTRICAL COMBINATION
PUSHBUTTON LOCKSET & CYLINDRICAL LATCH
KEY OVERRIDE - SEE NOTES
FINISH: SATIN CHROME 626 (26D)
DOOR SILENCERS
- SET #5 - M.C. RESTROOM**
CLOSER
PRIVACY LOCK
OVERHEAD STOP
BUTT HINGES
DOOR SILENCERS
- SET #6 - TAX OFFICE**
CLOSER
WALL STOP
LOCKSET & CYLINDER
ELECTRIC STRIKE FOR CARD READER FUNCTION
- SET #7 - OFFICES**
OFFICE SET
HOLD OPEN KICK STOP
BUTT HINGES
DOOR SILENCERS

DOOR & WINDOW NOTES

- GENERAL DOOR NOTES:**
- G1. G.C. TO FIELD VERIFY ALL HEIGHTS, WIDTHS, AND OVERALL OPENING DIMENSIONS FOR NEW STOREFRONT AND/OR CURTAIN WALL SYSTEMS.
 - G2. ALL HARDWARE TO BE ACCESSIBLE PER THE REQUIREMENTS OF ADA / APPLICABLE ANSII CODE, AND BE FAIL SECURE AND PROVIDE MECHANICAL FREE EGRESS.
 - G3. WOOD DOORS TO BE SOW ROTARY CUT NATURAL BIRCH, FINISHED AS SCHEDULED.
 - G4. ALUMINUM DOOR SUPPLIER TO PROVIDE 'KEYED ALIKE' MORTISE CYLINDERS FOR ALL KEYS ALUMINUM DOORS.
 - G5. DOOR HARDWARE SHALL BE PROVIDED WITH IC CORES - COORDINATE KEYING SCHEDULE WITH OWNER PRIOR TO ORDERING CYLINDERS.
 - G6. CONTROL KEY FOR TEMPORARY SCHLAGE IC CORES DURING CONSTRUCTION. AT PROJECT, THE SCHLAGE IC CONTROL KEYS TO BE LEFT ON SITE AND MARKED 'CONTROL KEY' FOR OWNER AUTHORIZED PERSONNEL. PROVIDE SERVICE COMPANIES TO REMOVE IC CONSTRUCTION CORES IN ORDER TO INSTALL PERMANENT KEY SYSTEM.
 - G7. INTERIOR HOLLOW METAL DOOR AND FRAME FINISH TO BE PAINT WITH MATCH ADJACENT WALL SURFACE, UNLESS EXTERIOR HOLLOW METAL DOOR AND FRAME FINISH TO BE PAINT AS INDICATED IN FINISH SCHEDULE.
 - G8. ADJUST ALL OPENING DIMENSIONS AS REQUIRED TO ACCOUNT FOR SHIM/SEALANT SPACE. MAINTAIN SCHEDULED DOOR SIZES AND ADJUST ROUGH OPENINGS AS REQUIRED TO ACCOMMODATE.
 - G9. REFER TO MECHANICAL DRAWINGS FOR ALL REQUIRED DOOR UNDERCUTS.
 - G10. ALL DOOR OPERATING OVERHEAD DOOR PACKAGES SHALL INCLUDE AN AUTOMATIC SAFETY DEVICE TO STOP OR REVERSE DOOR DOWNWARD MOTION.
 - G11. PANK HARDWARE, WHEN INSTALLED, SHALL BE LISTED AND CONSIST OF CROSSBARS OR SHIM/SEALS. THE ACTUATING PORTION OF WHICH EXTENDS NOT LESS THAN ONE-HALF THE HEIGHT OF THE DOOR LEAF AND NOT LESS THAN 3/4" INCHES NOR MORE THAN 4" ABOVE F.F.E.
 - G12. REFER TO HARDWARE SCHEDULE AND HARDWARE SPECIFICATIONS. DOOR HARDWARE IN RATED WALLS TO COMPLY WITH U.L. LABEL REQUIREMENTS FOR EACH OPENING.
 - G13. PROVIDE SELF-ADHESIVE FLEXIBLE MEMBRANE FLASHING AT ALL SIDES OF EXTERIOR OPENINGS. WRAP INTO OPENING & INTERFACE W/ MTL. HEAD FLASHING & WALL/VAPOR BARRIER TO PROVIDE POSITIVE DRAINAGE OUT OF OPENING & DOWN WALL FACE. SEAL AS REQUIRED. EXTERIOR OPENINGS SHALL BE FLASHED PRIOR TO APPLICATION OF FLUID APPLIED WRB. FLASHING AND TAPE SHALL BE LAPPED TO SHED WATER IN SHINGLE FASHION.
 - G14. ALL OVERHEAD DOORS (HIGH SPEED AND SECTIONAL OVERHEAD) SHALL BE PROVIDED WITH ALL HARDWARE AND ACCESSORIES FOR FULL AND COMPLETE INSTALLATION, INCLUDING WEATHERSTRIPPING, LOCKING HARDWARE AND CONTROLS - VERIFY REQUIREMENTS WITH OWNER.
 - G15. REFERENCE PARTITION TYPES, PLANS AND SECTIONS TO CHECK FRAME THROAT DIMENSIONS.

ELEVATION LEGEND



GLAZING TYPES

- G1 1" INSULATED, CLEAR & LOW-E GLASS
- G2 1" INSULATED, CLEAR, LOW-E & TEMPERED GLASS
- G3 1" INSULATED SPANDREL LOW-E GLASS - TEMPERED (T) WHERE INDICATED
- G4 1/2" CLEAR GLASS - TEMPERED (T) WHERE INDICATED
- G5 1/4" CLEAR GLASS - TEMPERED (T) WHERE INDICATED
- G6 1" INSULATED SPANDREL GLASS - TEMPERED (T) WHERE INDICATED
- G7 1" CLEAR GLASS - TEMPERED (T) WHERE INDICATED

DOOR & WINDOW DETAIL GEN. NOTES

- G1. SEE FINISH PLAN OR INTERIOR ELEVATIONS FOR INTERIOR FINISHES AND COLOR.
- G2. REFERENCE PARTITION TYPES AND CONSTRUCTION PLAN FOR SOUND ATTENUATION BATT INSULATION LOCATIONS.
- G3. DETAILS ARE MIRROR IMAGES AT SOME LOCATIONS. COORDINATE W/ CONSTRUCTION PLAN AND WINDOW ELEVATIONS.

WIND LOAD DATA

Wind Loads:
- BASIC DESIGN WIND VELOCITY = 142 MPH
(3 SECOND GUST - ULTIMATE DESIGN WIND SPEED - VULT)
- WIND: 118 MPH
- RISK CATEGORY = II
- WIND EXPOSURE = B
- IMPORTANCE FACTOR = 1.0
- INTERNAL PRESSURE COEFFICIENT = +/- 0.18
DESIGN PRESSURES FOR EXTERNAL COMPONENTS & CLADDING MATERIALS:
ROOF: SEE STRUCTURAL
PARAPET: SEE STRUCTURAL
WALLS: SEE STRUCTURAL

THE AUTO CLUB GROUP
AAA - CAR CARE CENTER
TAMPA, FL 33607
 1701 NORTH WESTSHORE BLVD
 PROGRESSIVE ARCHITECTURE ENGINEERING, PC
 1500 South Type 1, Suite 600 - Clearwater, FL 34620 - TEL: 727.231.4200 - WWW.PROGRESSIVEAEP.COM



ISSUANCE

REVISIONS	NO.	DATE	DESCRIPTION

FILE NUMBER: 79890009
 PROJECT MANAGER:
 PROFESSIONAL:
 DRAWN BY:
 CHECKED BY:

DOOR SCHEDULE, ELEVATIONS & DETAILS
A-601