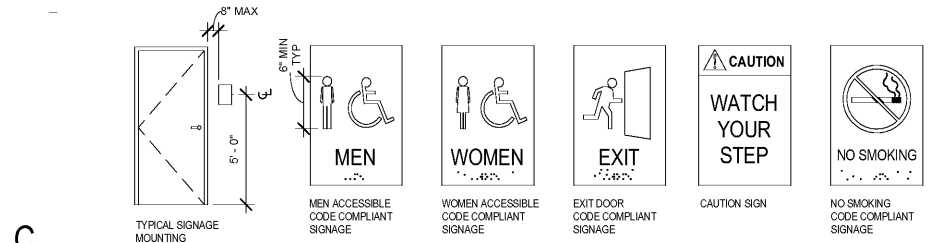
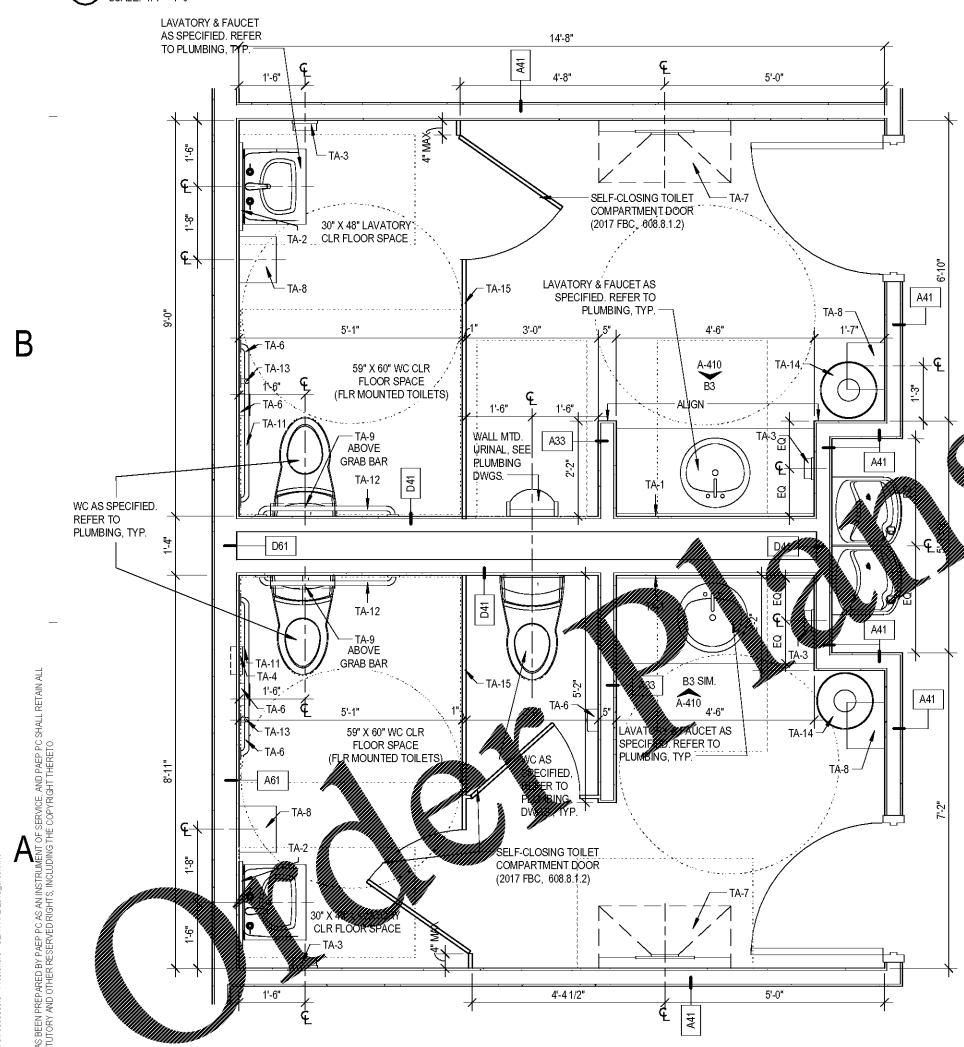


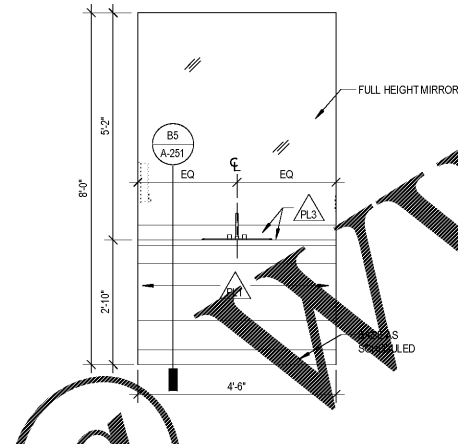
**D1** STANDARD MOUNTING HEIGHTS  
SCALE: 1/2" = 1'-0"



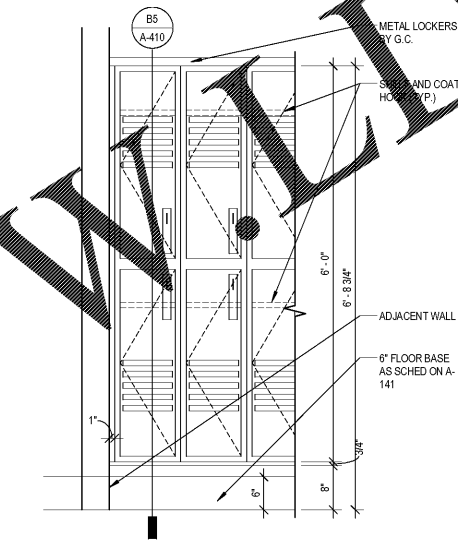
**C1** CODE COMPLIANT SIGNS  
SCALE: 1/4" = 1'-0"



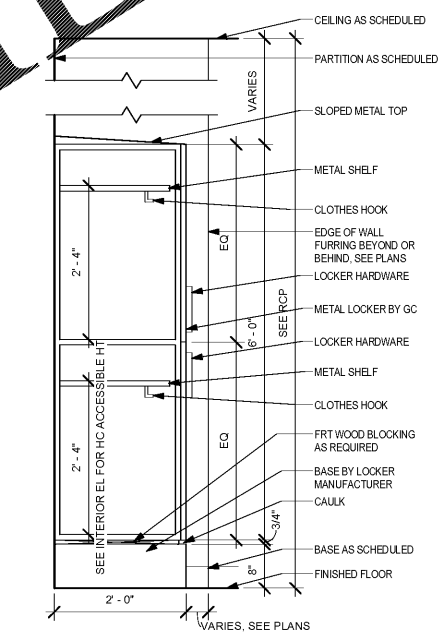
**A1** ENLARGED PLAN @ RETAIL RESTROOMS  
SCALE: 1/2" = 1'-0"



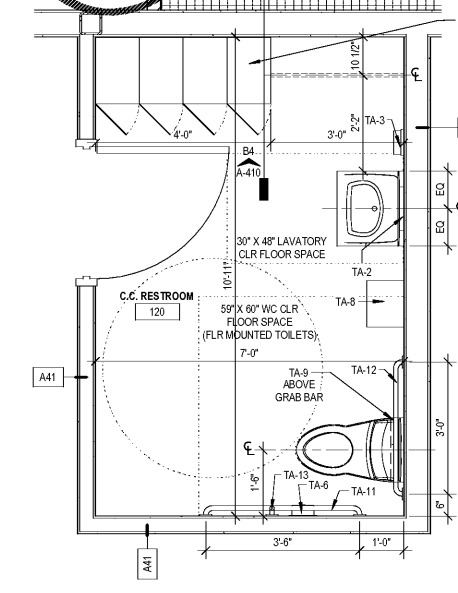
**B3** ELEVATION @ MEN'S RESTROOM  
SCALE: 1/2" = 1'-0"



**B4** ELEVATION @ LOCKERS, TYP.  
SCALE: 3/4" = 1'-0"



**B5** TYP. LOCKER SECTION  
SCALE: 3/4" = 1'-0"



**A3** ENLARGED PLAN @ C.C. RESTROOM  
SCALE: 1/2" = 1'-0"

TOILET ACCESSORY SCHEDULE	
NO.	DESCRIPTION
TA-1	FULL WIDTH MIRROR WITH STAINLESS STEEL ANGLE FRAME
TA-2	24" X 36" MIRROR WITH STAINLESS STEEL ANGLE FRAME - BOBRICK B-290
TA-3	SURFACE - MOUNTED SOAP DISPENSER - GOJO TFX FOAM SOAP DISPENSER, 10 1/2" H X 6" W X 4" D 1253683 (OWNER PROVIDED, G.C. INSTALLED) BLACK GOJ2730-12
TA-4	RECESSED SANITARY NAPKIN DISPOSAL - ROCHESTER MIDLAND SANITARY NAPKIN DISPOSAL UNIT (OWNER PROVIDED, G.C. INSTALLED)
TA-5	- NOT USED -
TA-6	SURFACE MOUNTED - TOILET TISSUE DISPENSER - KIMBERLY-CLARK PROFESSIONAL CORELESS JRT BATH TISSUE DISPENSER KCC 09002 - 14 1/8" X 6" X 9 3/4", SMOKE/GRAY (OWNER PROVIDED, G.C. INSTALLED)
TA-7	AMERICAN SPECIALTIES HORIZONTAL BABY CHANGING STATION - MODEL NO. 9012
TA-8	SURFACE MOUNTED PAPER TOWEL DISPENSER - SANITOUCH HARD ROLL PAPER DISPENSER KMM9990 (OWNER PROVIDED, G.C. INSTALLED)
TA-9	SURFACE MOUNTED - SEAT - COVER DISPENSER - KIMBERLY-CLARK PROFESSIONAL WINDOWS WALL TOILET SEAT COVER DISPENSER, 13 1/4" H X 17 1/2" W X 3 1/4" D, PEARL (OWNER PROVIDED, G.C. INSTALLED)
TA-10	- NOT USED -
TA-11	42" GRAB BAR - BOBRICK B-5806-42
TA-12	30" GRAB BAR - BOBRICK B-5806-36
TA-13	18" GRAB BAR - BOBRICK B-5806-18
TA-14	FLOOR STANDING, DOME - TOP WASTE RECEPTACLE - BOBRICK B-2300
TA-15	PLASTIC LAMINATE TOILET PARTITION (PL-1)

**ISSUANCE**

**REVISIONS**

NO.	DATE	DESCRIPTION

FILE NUMBER: 7989009  
PROJECT MANAGER: [blank]  
DRAWN BY: [blank]  
CHECKED BY: [blank]

**RESTROOM PLANS & DETAILS**

**A-410**

THE AUTO CLUB GROUP  
**AAA - CAR CARE CENTER**  
**TAMPA, FL 33607**  
1701 NORTH WESTSHORE BLVD

PROGRESSIVE

PROGRESSIVE ARCHITECTURE ENGINEERS, P.C.  
307 South Town St. Suite 403 - Clearwater, FL 34622 - TEL: 727.231.4500 - WWW.PROGRESSIVEAEC.COM

6/22/2018 10:32:11 AM  
D:\Projects\Local\174221\679600000 - Westshore - CENTRAL\_2018.dwg  
THIS DOCUMENT HAS BEEN PREPARED BY P&S AS AN INSTRUMENT OF SERVICE AND P&S SHALL RETAIN ALL COMMERCIAL, STATUTORY AND OTHER RESERVED RIGHTS, INCLUDING THE COPYRIGHT THEREIN.

Order Plans