

BUILDING ELEVATION NOTES

- P1. EXISTING BUILDING ELEMENTS / MATERIALS TO REMAIN NOTED OR SHOWN FADED, TYPICAL.
- P2. VERIFY DIMENSIONS REFERENCING EXISTING BUILDING ELEMENTS IN FIELD.
- P3. BUILDING ELEMENTS / MATERIALS TO BE NEW CONSTRUCTION, UNO.
- P4. REFERENCE DEMOLITION PLAN & ROOF PLAN FOR ADDITIONAL DEMOLITION INFORMATION.
- P5. EXISTING BUILDING ELEMENTS / MATERIALS TO BE REMOVED NOTED OR DASHED, INDICATE.
- P6. VERIFY DIMENSIONAL INFORMATION AND EXTENT OF DEMOLITION WITH DEMOLITION PLAN, CONSTRUCTION PLAN AND FIELD CONDITIONS.
- P7. MINIMIZE DEMOLITION AND PROTECT SURROUNDING CONDITIONS AS REQUIRED.
- P8. PROVIDE SECURE CONSTRUCTION SITE PERIMETER DURING DEMOLITION AND CONSTRUCTION.
- P9. NO SELECTIVE DEMOLITION WAS PERFORMED BY THE DESIGN TEAMING TEAMS AND NO DETAILED AS-BUILT DRAWINGS ARE AVAILABLE. THEREFORE, CONDITIONS CONCERNING EXISTING CONDITIONS WERE MADE BY G.C. SHALL VERIFY EXISTING CONDITIONS AS DEPICTED IN THE ARCHITECTURAL AND ENGINEERING DRAWINGS PRIOR TO FABRICATING WORK AND SHOWING ARCHITECT IF ANY DISCREPANCIES EXIST BETWEEN DRAWINGS AND ACTUAL CONDITIONS. REVISIONS TO ELEVATIONS MAY BE NECESSARY.
- P10. ALIGN BRICK JOINTS WITH WALL REVEALS.
- P11. INTERIOR WALL PANEL SYSTEM JOINTS TO ALIGN WITH CENTERLINE OF MULLIONS OR JOINTS.
- P12. G.C. TO COORDINATE LOCATION AND HEIGHTS OF ALL EXTERIOR CAMERA CONDUIT STUBS AND JACKS WITH OWNER AND SECURITY VENDOR.

BUILDING ELEVATION KEYNOTES

- ITEMS LABELED WITH KEYED NOTE INDICATOR ARE FOR SPECIFIC LOCATIONS ON PLANS
- 1109 6" DIA. PTD. GALV. STL. PIPE BOLLARD, TYP. SEE DETAIL C21A-301. (PAINT MATTE BLACK)
- 1501 4" BRICK VENEER COLOR 01 (REF. MATERIALS KEY ON A-201 FOR COLOR/SPEC)
- 1502 3/4" INSET BRICK VENEER COLOR 02 (REF. MATERIALS KEY ON A-201 FOR COLOR/SPEC)
- 1503 EIFS COLOR 03 (REF. MATERIALS KEY ON A-201 FOR COLOR/SPEC)
- 1504 PRE-CAST STONE WATER TABLE. (REF. MATERIALS KEY ON A-201 FOR COLOR/PROFILE/SPEC)
- 1505 EIFS COLOR 01 (REF. MATERIALS KEY ON A-201 FOR COLOR/SPEC)
- 1506 3/4" INSET EIFS COLOR 01 (REF. MATERIALS KEY ON A-201 FOR COLOR/SPEC)
- 1507 EIFS CORNICE COLOR 02 (REF. MATERIALS KEY ON A-201 FOR COLOR/SPEC)
- 1508 PREFINISHED METAL COPING (REF. ELEVATION NOTES ON A-201 FOR EXACT COLOR/SPEC)
- 1509 OVERFLOW ROOF DRAIN WALL SPOUT CENTERED ON PLASTER, CENTER MOUNT @ 12" A.F.F. (REF. PLUMB DWGS FOR SPECS)
- 1510 SECTIONAL ALUM. OVERHEAD DOOR, TYP. SEE DOOR SCHED & ELEVS
- 1511 EXTERIOR ALUM. STOREFRONT SYSTEM, TYP. SEE DOOR/WINDOW SCHEDULE & ELEVATIONS
- 1512 CANVAS AWNING ON EXTRUDED ALUM. FRAME. (REF. MATERIALS KEY ON A-201 FOR COLOR/SPEC)
- 1513 WALL MOUNTED EXTERIOR LIGHT FIXTURE (TYP.) (REF. ELEC DWGS)
- 1514 WALL MOUNTED EXTERIOR EMERGENCY EGRESS LIGHT PACK (REF. ELEC DWGS)
- 1515 HOLLOW METAL DOOR AND FRAME. (REF. DOOR SCHEDULE ON A-201)
- 1516 EXTERIOR SIGNAGE BY OWNER/VENDOR. G.C. TO PROVIDE CONDUIT/JUNCTION BOX PRIOR TO SIGNAGE INSTALLATION, TYP.
- 1523 THRU-WALL KEY DROP BOX BY G.C. "INTERBANK EQUIPMENT.COM" MODEL "AS-0109-EDU". INSTALL PER MANUFACTURER INSTRUCTIONS EQUIPPED ON PLASTER. COLLECTION BOX ON INTERIOR TO BE FLUSH WITH FINISH WALL FACE. MOUNT TO FLUSH BRICK FACED SURFACE ON EXTERIOR.
- 1524 WALL MOUNTED ENVELOPE HOLDER BOX BY G.C. "INTERBANK EQUIPMENT.COM" ITEM NUMBER "1001". INSTALL PER MANUFACTURER INSTRUCTIONS.
- 1525 1/2" "V" SHAPE EIFS REVEAL
- 1527 EXTERIOR SIGNAGE BY OWNER/VENDOR, TYP.
- 1528 PROVIDE CONTROL JOINTS, CAULK TO MATCH GROUT COLOR
- 1530 EIFS ACCENT BAND COLOR #2 (REF. MATERIALS KEY ON SHEET A-201 FOR COLOR/SPEC)
- 1533 ANGLED EIFS CORNICE TO RETURN
- 1534 HOSE BIB @ 24" AFF. SEE PLUMB DWGS.
- 1535 HARDI TRIM BOARD, PAINTED TO MATCH OH DOOR FRAME COLOR, TYP.
- 1536 OIL ACCESS DOOR. SEE DOOR SCHEDULE. PAINTED TO MATCH ADJACENT EIFS.

MATERIALS KEY & LEGEND

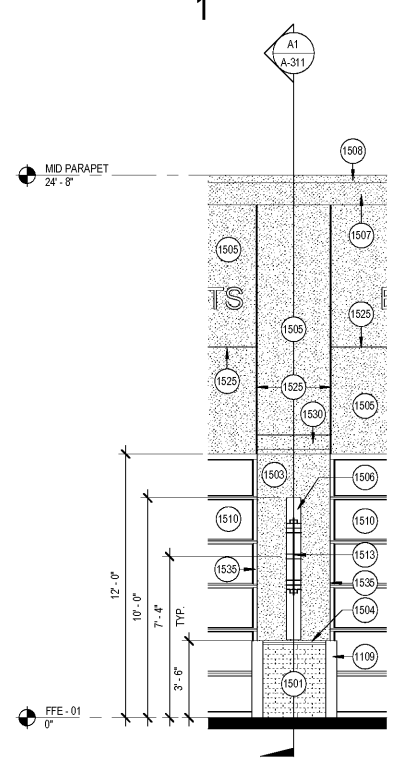
- BRICK VENEER 01** (WATER TABLE & BRICK PILASTERS) - TAYLOR
COLOR - WOODLEAF
FINISH - WIRE-CUT
NOTE: G.C. TO FACTOR IN LONGER LEAD TIMES WITH TAYLOR.
 - BRICK VENEER 02** (BRICK INSET @ PLASTER) - TAYLOR
COLOR - GRAY #320
FINISH - SMOOTH
NOTE: G.C. TO FACTOR IN LONGER LEAD TIMES WITH TAYLOR.
 - EIFS 01** (PRIMARY EIFS FACADE & EIFS PLASTER INSET)
DRYVIT - COLOR #105 SUEDE
 - EIFS 02** (CORNICE & EIFS ACCENT BANDING)
DRYVIT - COLOR #310 CHINA WHITE
 - EIFS 03** (EIFS PILASTER)
DRYVIT - COLOR #142 SPECTRUM BROWN
 - ARCHITECTURAL WALL SCONCE**
FINISH - DARK BRONZE
NOTE: REFERENCE ELECTRICAL DRAWINGS FOR SPECS.
- WATER TABLE:**
PRE-CAST STONE WATER TABLE SILL
ROCKCAST - COLOR - "BONE"
PROFILE - SL225
NOTE: (G.C. TO PROVIDE ARCHITECT WITH A SAMPLE FOR APPROVAL PRIOR TO ORDERING)
- CANVAS AWNING:**
SUNBRELLA - COLOR - "MEDITERRANEAN BLUE"
FRAME - EXTRUDED ALUMINUM TO MATCH STOREFRONT FINISH
NOTE: FRAME SPREAD RATING TO BE IN ACCORDANCE WITH NFPA 701
- METAL COPING**
COLOR - FACTORY PRE-FINISHED MATTE BLACK

ISSUANCE

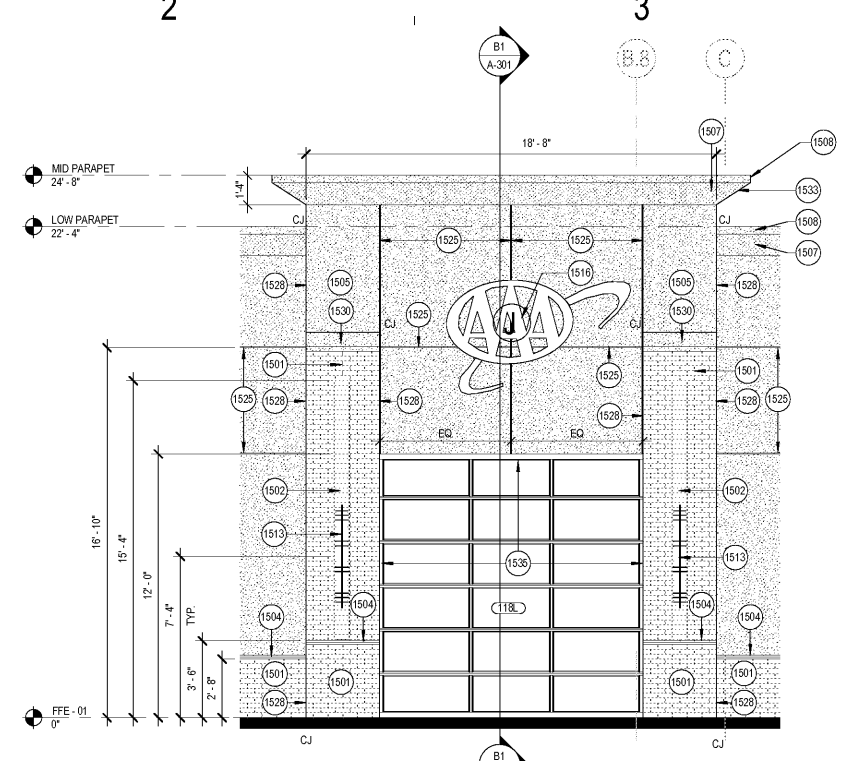
REVISIONS

NO.	DATE	DESCRIPTION

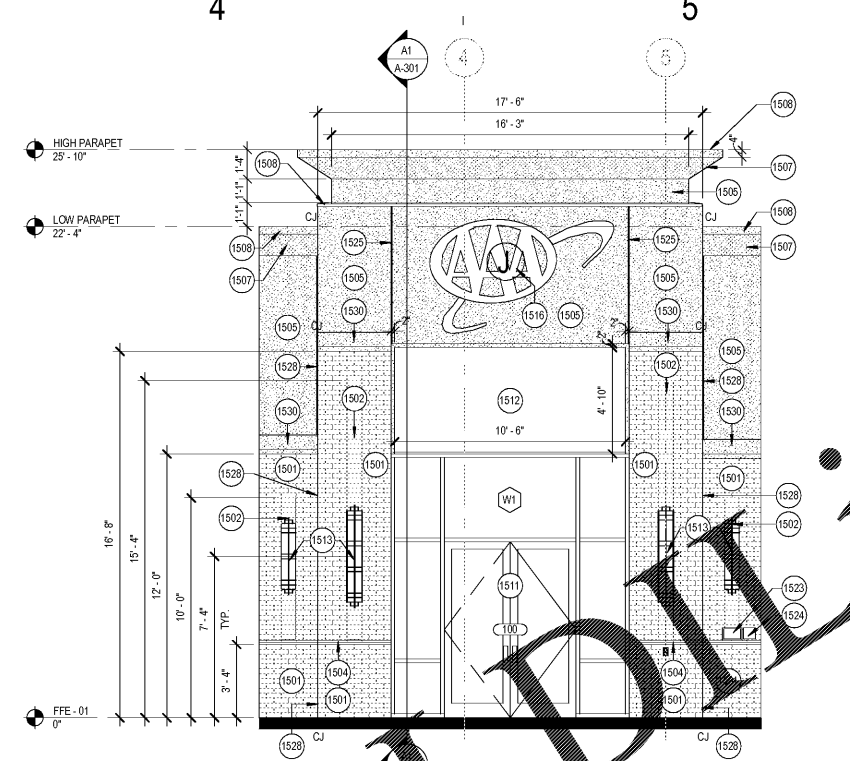
FILE NUMBER: 7986009
PROJECT MANAGER: _____
PROFESSIONAL: _____
DRAWN BY: _____
CHECKED BY: _____



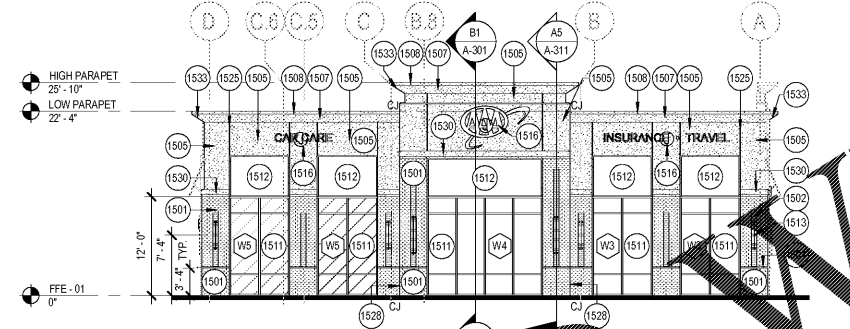
D1 ENLARGED EIFS PILASTER ELEVATION
SCALE: 1/4" = 1'-0"



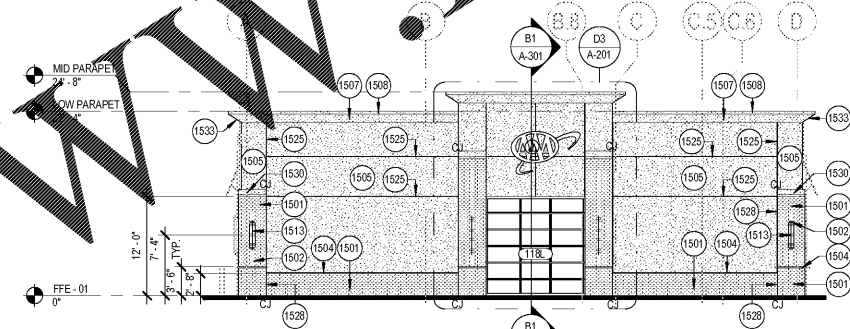
D3 ENLARGED VEHICLE EXIT TOWER ELEVATION
SCALE: 1/4" = 1'-0"



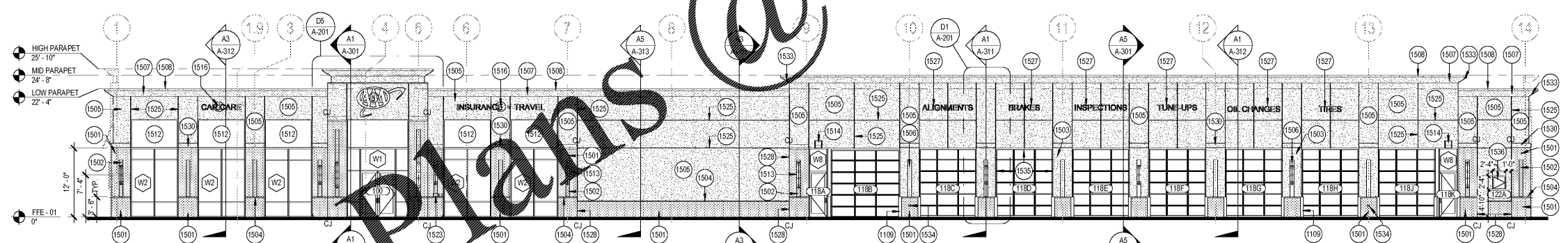
D5 ENLARGED ENTRANCE TOWER ELEVATION
SCALE: 1/4" = 1'-0"



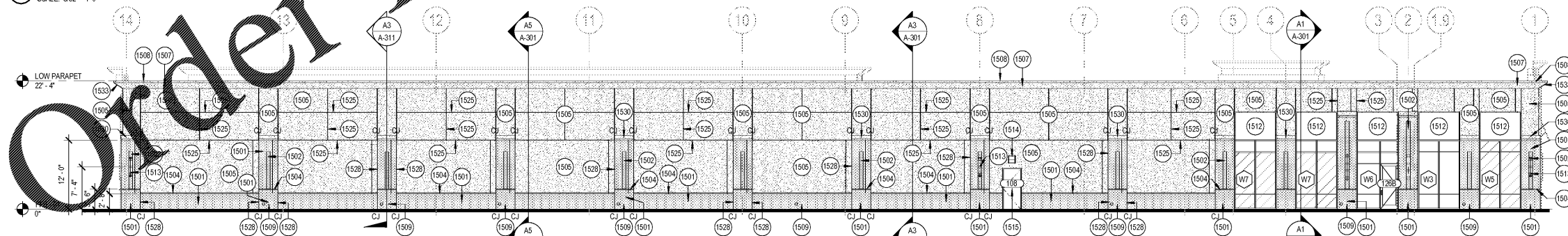
C3 WEST BUILDING ELEVATION
SCALE: 3/32" = 1'-0"



C5 EAST BUILDING ELEVATION
SCALE: 3/32" = 1'-0"



B1 SOUTH BUILDING ELEVATION
SCALE: 3/32" = 1'-0"



A1 NORTH BUILDING ELEVATION
SCALE: 3/32" = 1'-0"

6/22/2018 10:31:42 AM
 D:\P\Draw\A\A-201\A-201.dwg
 THE DOCUMENT HAS BEEN REPRODUCED BY PAPER OR BY ANY OTHER MEANS WITHOUT THE WRITTEN PERMISSION OF THE ARCHITECT. NO PART OF THIS DOCUMENT SHALL BE REPRODUCED OR TRANSMITTED IN ANY FORM OR BY ANY MEANS, ELECTRONIC OR MECHANICAL, INCLUDING PHOTOCOPYING, RECORDING, OR BY ANY INFORMATION STORAGE AND RETRIEVAL SYSTEM, WITHOUT THE WRITTEN PERMISSION OF THE ARCHITECT.

Order Plans @ www.onlinedrawing.com

Progressive
 THE AUTO CLUB GROUP
AAA - CAR CARE CENTER
TAMPA, FL 33607
 1701 NORTH WESTSHORE BLVD