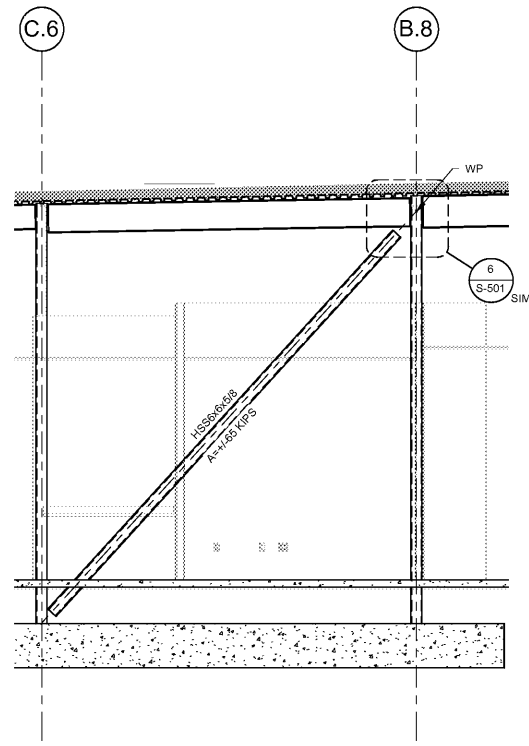
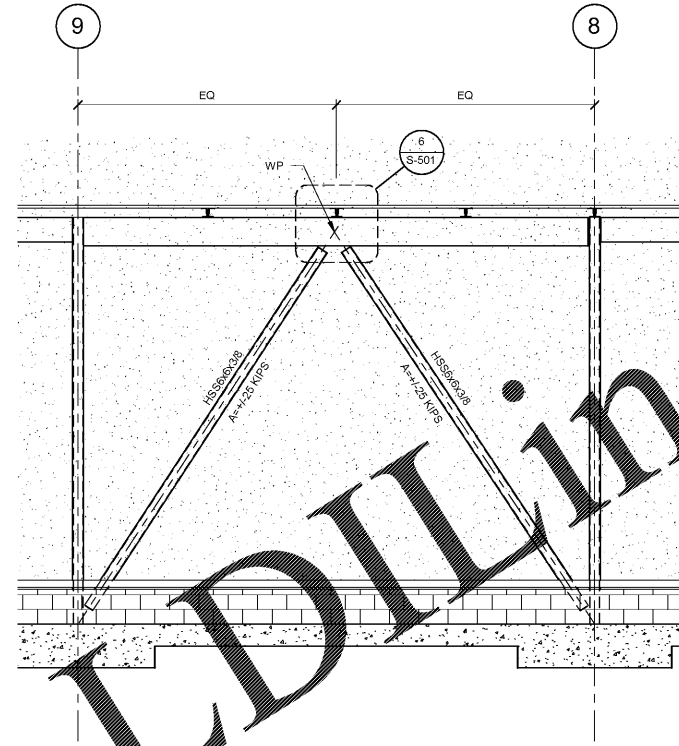


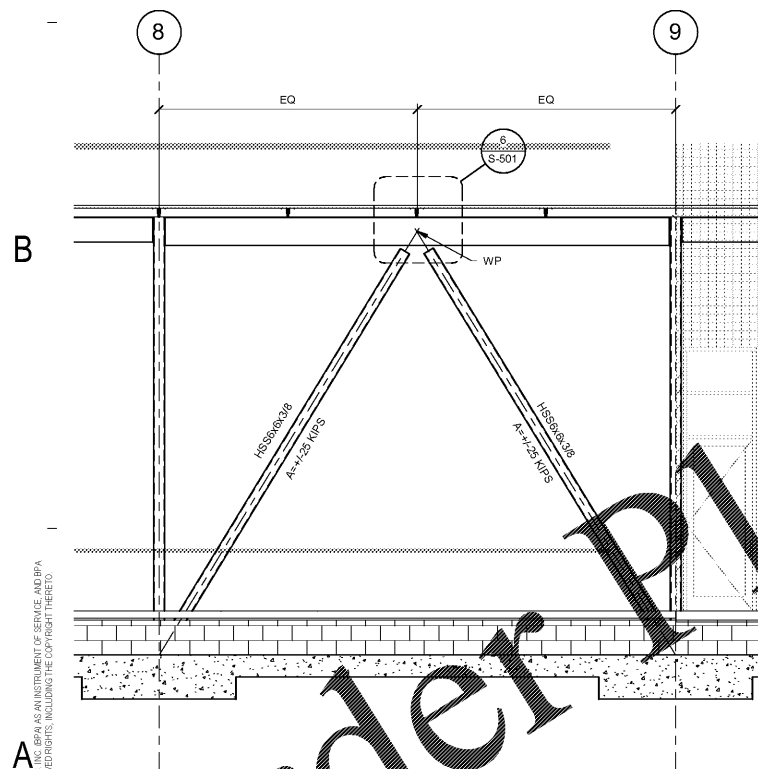
**1 BRACE ELEVATION**  
1/4" = 1'-0"



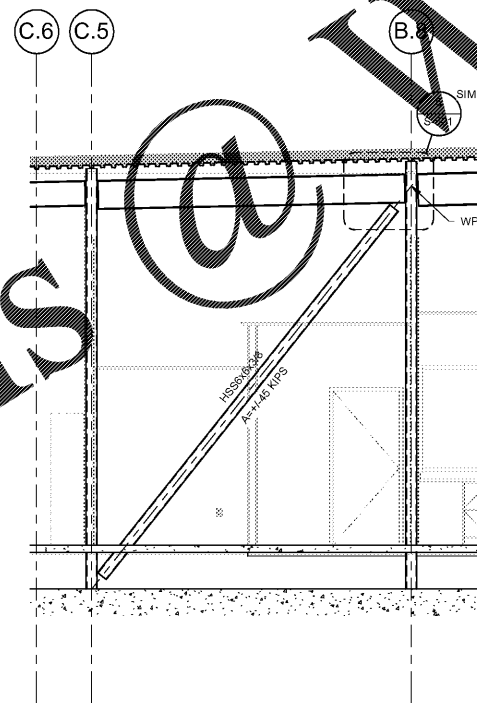
**2 BRACE ELEVATION**  
1/4" = 1'-0"



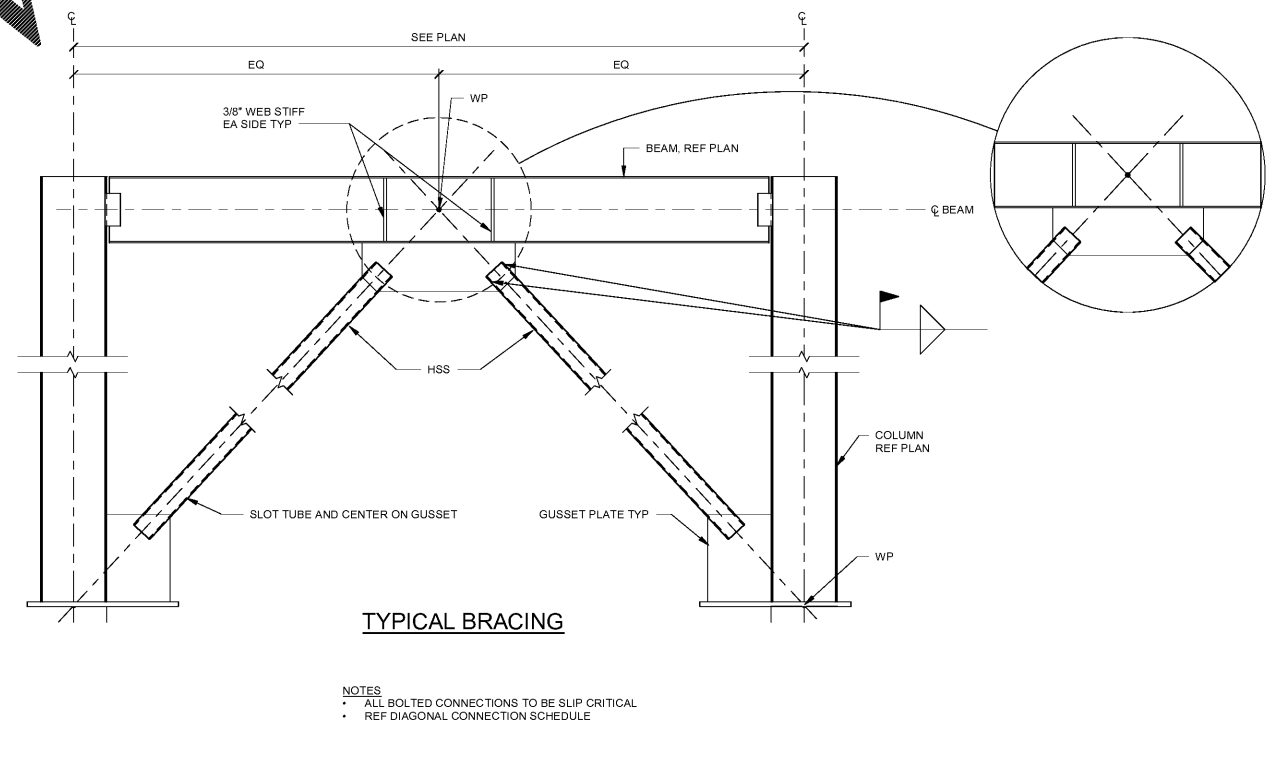
**3 BRACE ELEVATION**  
1/4" = 1'-0"



**4 BRACE ELEVATION**  
1/4" = 1'-0"



**5 BRACE ELEVATION**  
1/4" = 1'-0"



**TYPICAL BRACING**

- NOTES**
- ALL BOLTED CONNECTIONS TO BE SLIP CRITICAL
  - REF DIAGONAL CONNECTION SCHEDULE

**6 TYP BRACE**  
3/4" = 1'-0"

BRITT, PETERS  
AND  
ASSOCIATES  
INC.  
consulting engineers

101 Falkland Dr.  
Suite 501  
Greenville, SC 29601  
(864) 771-8869  
www.britt-peters.com  
BPA Job # 100700  
FL COA No. 27497

THE AUTO CLUB GROUP  
**AAA - CAR CARE CENTER**  
**TAMPA, FL 33607**  
1701 NORTH WESTSHORE BLVD.



**ISSUANCE**

NO.	DATE	DESCRIPTION

FILE NUMBER: 7889009  
PROJECT MANAGER: Author  
PROFESSIONAL: Author  
DRAWN BY: Checker  
CHECKED BY: Checker

**BRACED FRAME ELEVATIONS**  
**S-501**

THIS DOCUMENT HAS BEEN PREPARED BY BRITT, PETERS AND ASSOCIATES AS AN INSTRUMENT OF SERVICE AND SHALL BE THE PROPERTY OF BRITT, PETERS AND ASSOCIATES. IT IS TO BE USED ONLY FOR THE PROJECT AND SITE SPECIFICALLY IDENTIFIED HEREIN. IT IS NOT TO BE REPRODUCED, COPIED, OR TRANSMITTED IN ANY FORM OR BY ANY MEANS, ELECTRONIC OR MECHANICAL, INCLUDING PHOTOCOPYING, RECORDING, OR BY ANY INFORMATION STORAGE AND RETRIEVAL SYSTEM, WITHOUT THE WRITTEN PERMISSION OF BRITT, PETERS AND ASSOCIATES.

**BRACES ELEVATION NOTES**  
1. ALL AXIAL REACTIONS SHOWN ON THIS SHEET ARE SERVICE LEVEL.