

THIS DOCUMENT HAS BEEN PREPARED BY BRITT, PETERS & ASSOCIATES, INC. AS AN INSTRUMENT OF SERVICE AND SHALL REMAIN COMMON LAW, STATUTORY AND OTHER RESERVED RIGHTS, INCLUDING THE COPYRIGHT THEREON.

B

C

D

1

2

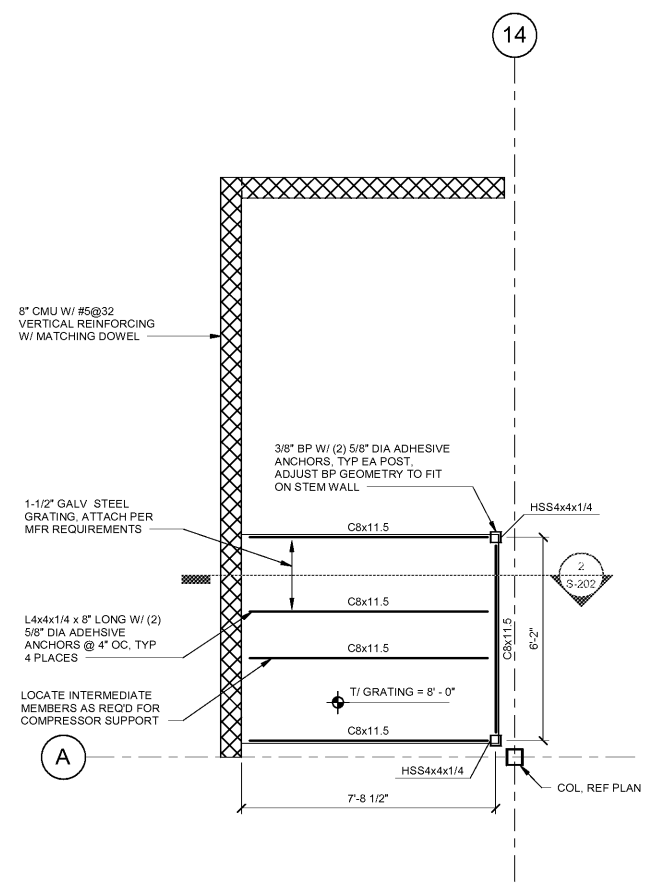
3

4

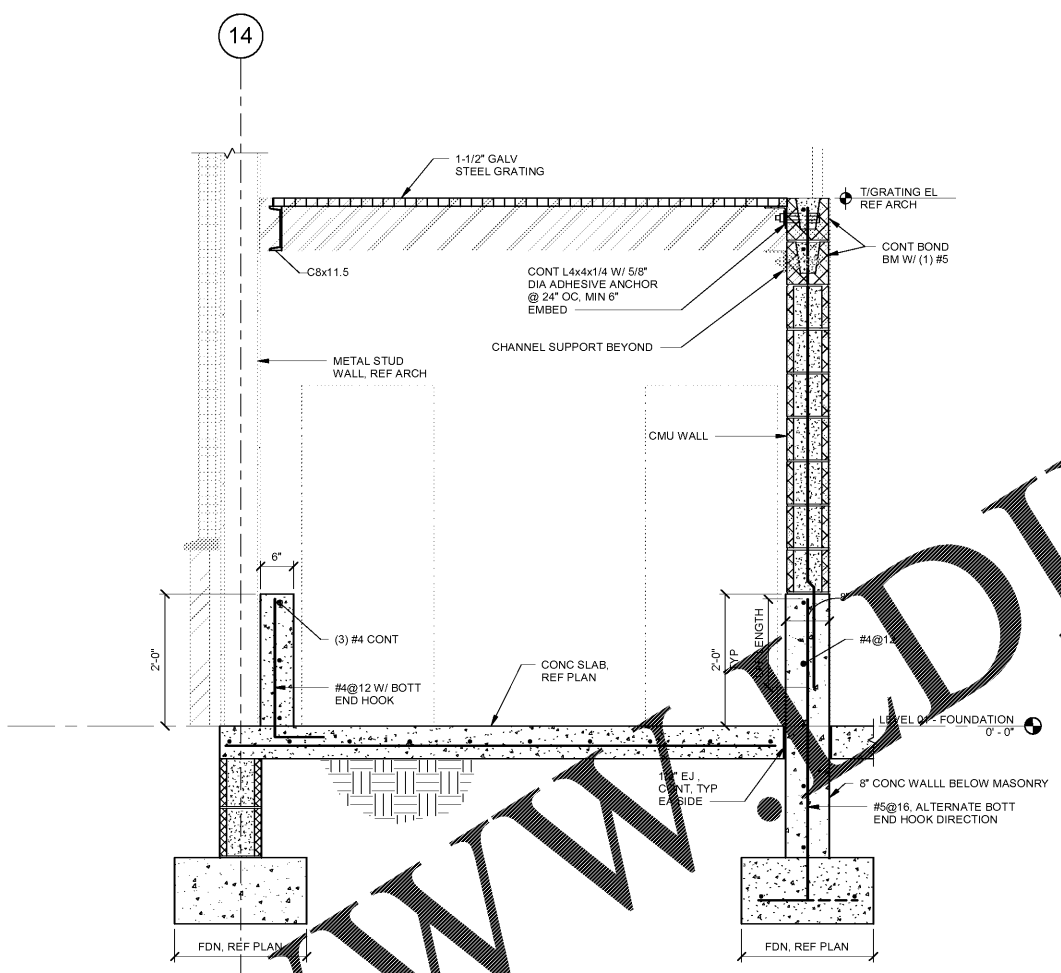
5

6

1 PLATFORM
3/8" = 1'-0"



2 SECTION
3/4" = 1'-0"



BRITT, PETERS
AND
ASSOCIATES
INC.
consulting engineers

101 Falkland Dr.
Suite 601
Greenville, SC 29601
(864) 771-8869
www.brittpeters.com
BPA J00000100000
FL COA No. 27497



THIS DOCUMENT IS THE PROPERTY OF BRITT, PETERS & ASSOCIATES, INC. IT IS TO BE USED ONLY FOR THE PROJECT AND SITE SPECIFICALLY IDENTIFIED HEREON. IT IS NOT TO BE REPRODUCED, COPIED, OR TRANSMITTED IN ANY FORM OR BY ANY MEANS, ELECTRONIC OR MECHANICAL, INCLUDING PHOTOCOPYING, RECORDING, OR BY ANY INFORMATION STORAGE AND RETRIEVAL SYSTEM, WITHOUT THE WRITTEN PERMISSION OF BRITT, PETERS & ASSOCIATES, INC. THE USER OF THIS DOCUMENT AGREES TO HOLD BRITT, PETERS & ASSOCIATES, INC. HARMLESS FROM ANY AND ALL CLAIMS, DAMAGES, LOSSES, AND EXPENSES, INCLUDING REASONABLE ATTORNEY'S FEES, THAT MAY BE ASSERTED AGAINST BRITT, PETERS & ASSOCIATES, INC. BY ANY THIRD PARTY AS A RESULT OF THE USER'S USE OF THIS DOCUMENT.

ISSUANCE

NO.	DATE	DESCRIPTION

FILE NUMBER 79890009
PROJECT MANAGER
PROFESSIONAL
DRAWN BY Author
CHECKED BY Checker

PLATFORM
FRAMING PLAN
S-202

THE AUTO CLUB GROUP

AAA - CAR CARE CENTER
TAMPA, FL 33607
1701 NORTH WESTSHORE BLVD.

Progressive

PROGRESSIVE ARCHITECTURE ENGINEERING, P.C.
310 S. South Street, Suite 501, Charlotte, NC 28202, Tel: 704.371.8867 www.progressive.com

Order Plans @ WWW.DILine.com