

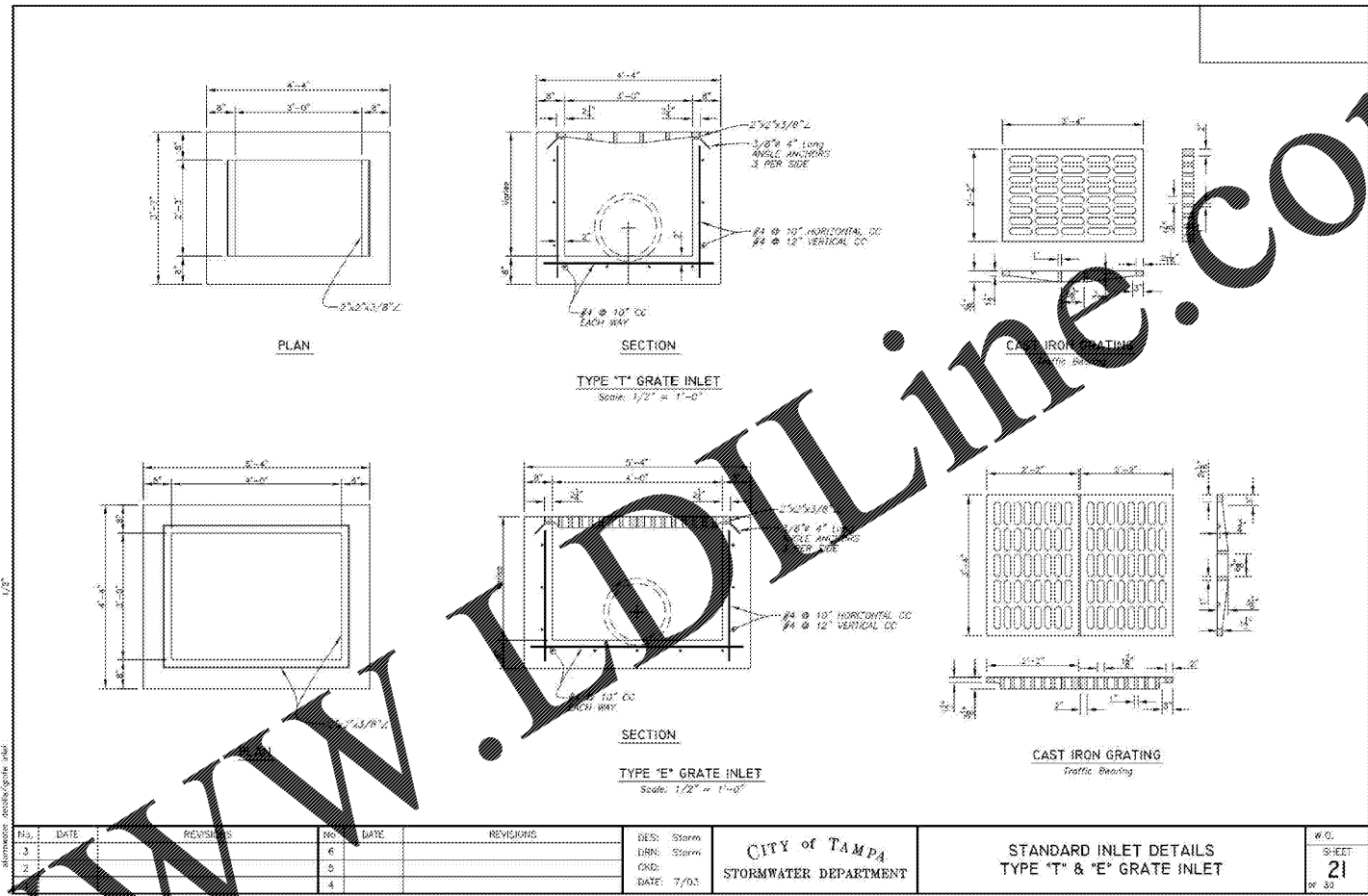
DRAWING NO. TD-1
SHEET NO. 2 OF 3

DISABLED PARKING / SIGNING
TYPICAL DETAILS

Hillsborough
County Florida

TRANSPORTATION
TECHNICAL
MANUAL

REVISION DATE: 10/17



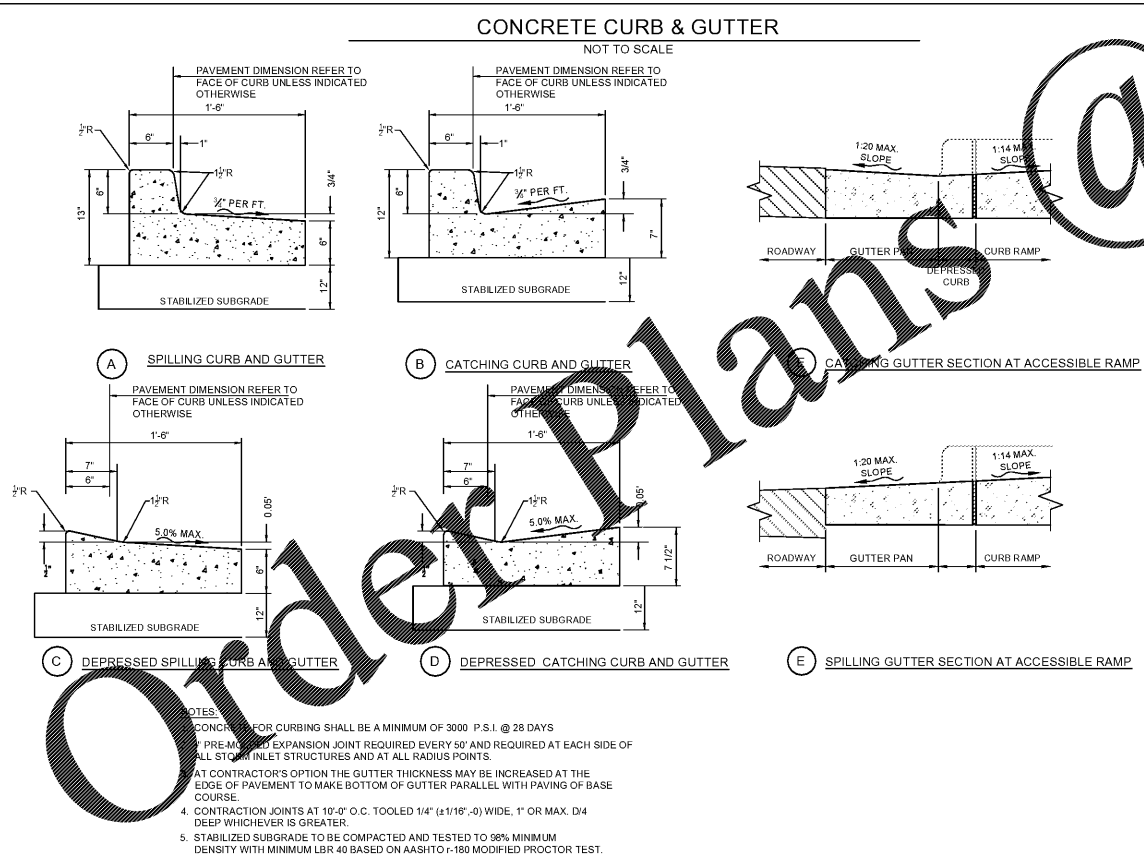
NO.	DATE	REVISIONS	NO.	DATE	REVISIONS
1			1		
2			2		
3			3		
4			4		

DES: Storm
DRN: Storm
CHK: CND
DATE: 7/03

CITY of TAMPA
STORMWATER DEPARTMENT

STANDARD INLET DETAILS
TYPE 'T' & 'E' GRATE INLET

NO. 21
SHEET OF 32



NOTES:

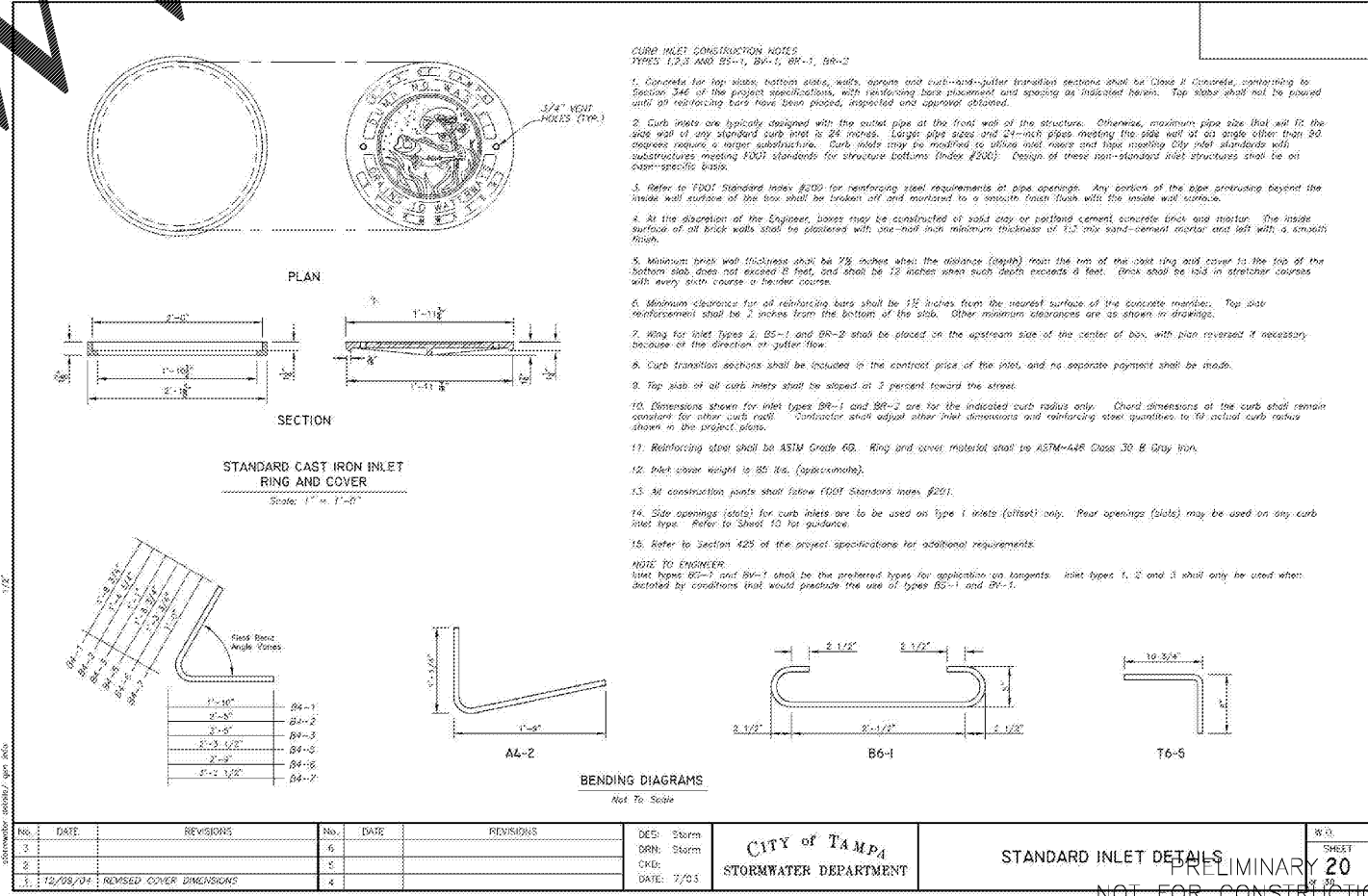
1. CONCRET FOR CURBING SHALL BE A MINIMUM OF 3000 P.S.I. @ 28 DAYS

2. PREMIXED EXPANSION JOINT REQUIRED EVERY 50' AND REQUIRED AT EACH SIDE OF ALL STORM INLET STRUCTURES AND AT ALL RADIUS POINTS.

3. AT CONTRACTOR'S OPTION THE GUTTER THICKNESS MAY BE INCREASED AT THE EDGE OF PAVEMENT TO MAKE BOTTOM OF GUTTER PARALLEL WITH PAVING OF BASE COURSE.

4. CONTRACTION JOINTS AT 10'-0" O.C. TOOLED 1/4" (±1/16"-) WIDE, 1" OR MAX. D4 DEEP WHICHEVER IS GREATER.

5. STABILIZED SUBGRADE TO BE COMPACTED AND TESTED TO 98% MINIMUM DENSITY WITH MINIMUM LBR 40 BASED ON AASHTO 1-100 MODIFIED PROCTOR TEST.



NO.	DATE	REVISIONS	NO.	DATE	REVISIONS
1	12/09/04	REVISED COVER DIMENSIONS	1		
2			2		
3			3		
4			4		

DES: Storm
DRN: Storm
CHK: CND
DATE: 7/03

CITY of TAMPA
STORMWATER DEPARTMENT

STANDARD INLET DETAILS
PRELIMINARY 20

NO. 21
SHEET OF 32

NOT FOR CONSTRUCTION

ILLINOIS DESIGN FIRM
184-001322
420 N. FRONT STREET, SUITE 100
McHENRY, IL 60050
PHONE: 815.385.1778
FAX: 815.385.1781

HRGreen

CAR CARE PLUS CENTER
AAA - AMERICAN AUTOMOBILE ASSOCIATION
1701 N. WESTSHORE BLVD., TAMPA, FL 33607
CIVIL

STANDARD CONSTRUCTION DETAILS

BAR IS ONE INCH ON OFFICIAL DRAWINGS
IF NOT ONE INCH, ADJUST SCALE ACCORDINGLY

DRAWN BY: ERN
APPROVED: JFV
JOB DATE: 06/20/2018
JOB NO: 160122

DRAWING C-07