

CODE SUMMARY

Name of Project: AAA WESTSHORE II
Address: 1701 N. WESTSHORE BLVD. TAMPA, FLORIDA
Proposed Use: BUS-1 OCCUPANCY GROUPS
Owner or Authorized Agent: RICH CROOK

PROJECT SUMMARY
CONSTRUCT A NEW GROUND-FLOOR FACILITY FOR LIGHT AUTOMOTIVE (NON-COMMERCIAL) REPAIRS AND SERVICE ALONG WITH SUPPORTING BUSINESS OFFICES, RETAIL, TRAVEL, & INSURANCE SERVICES AND A TAX OFFICE.

DESIGN PROFESSIONAL INFORMATION
OWNER: PROGRESSIVE ARCHITECTURE
ARCHITECT: PROGRESSIVE ARCHITECTURE

Building Code: 2017 Florida Building Code
2017 Florida Mechanical Code
2017 Florida Electrical Code
2017 Florida Energy Conservation Code

New Building: New building
Existing Building: Change of Use/occupancy

Table with columns for Construction Type, Mixed Construction, Sprinklers, Fireplaces, Building Height, Maximum Panel, and Allowable Area.

Occupancy: Assembly, Business, Educational, Factory, Hazardous, Institutional, Mercantile, Residential, Storage, Utility & Misc.

Accessory Occupancies: Assembly, Business, Educational, Factory, Hazardous, Institutional, Mercantile, Residential, Storage, Utility & Misc.

Incidental Uses: Rooms with any piece of equipment is over 400,000 Btu per hour input, Restrooms, etc.

Special Uses: 401, 402, 403, 404, 405, 406, 407, 408, 409, 410, 411, 412, 413, 414, 415, 416, 417, 418, 419, 420, 421, 422, 423, 424, 425, 426, 427

Special Provisions: 509.2, 509.3, 509.4, 509.5, 509.6, 509.7, 509.8, 509.9

Minimum Occupancy: 0
Incidental Use Separation: No
Non-Separated Use: No
Separated Use: No

Table with columns for Story, Description and Use, (A) Big Area per Story, (B) Allowable Bldg. Area, (C) Area for Sprinkler Increase, (D) Area for Sprinkler Increase, (E) Allowable area of Unimpaired, (F) Maximum Building Area.

Occupant Load and Exit Width: This section to be completed for all projects.

Table with columns for Type of Construction, Building Height in Feet, Building Height in Stories, and Code Reference.

Table with columns for Building Element, Fire Separation, and other fire protection requirements.

Table with columns for Building Element, Fire Separation, and other fire protection requirements.

Table with columns for Occupancy, Male, Female, Unkln, Male, Female, Shower, Dining, Service, and other plumbing fixture requirements.

Special Approvals: This section to be completed for all projects.

Structural Design: This section to be completed for all projects.

Energy Summary: This section to be completed for all projects.

Mechanical Summary: This section to be completed for all projects.

Table with columns for Floor, Room or Space Designation, Minimum Number of Exits, Travel Distance, and Arrangement of Means of Egress.

Table with columns for Use Group or Space Designation, (A) Area, (B) Area, (C) Area, (D) Area, (E) Area, (F) Area.

Table with columns for Use Group or Space Designation, (A) Area, (B) Area, (C) Area, (D) Area, (E) Area, (F) Area.

Table with columns for Use Group or Space Designation, (A) Area, (B) Area, (C) Area, (D) Area, (E) Area, (F) Area.

Table with columns for Use Group or Space Designation, (A) Area, (B) Area, (C) Area, (D) Area, (E) Area, (F) Area.

Table with columns for Use Group or Space Designation, (A) Area, (B) Area, (C) Area, (D) Area, (E) Area, (F) Area.

Table with columns for Use Group or Space Designation, (A) Area, (B) Area, (C) Area, (D) Area, (E) Area, (F) Area.

Table with columns for Use Group or Space Designation, (A) Area, (B) Area, (C) Area, (D) Area, (E) Area, (F) Area.

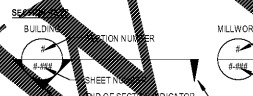
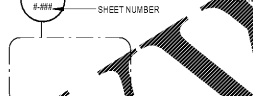
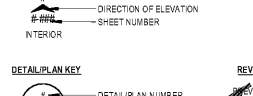
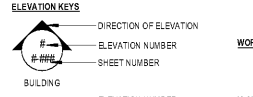
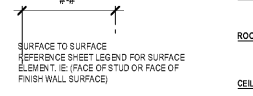
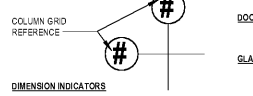
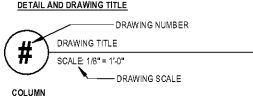
Table with columns for Use Group or Space Designation, (A) Area, (B) Area, (C) Area, (D) Area, (E) Area, (F) Area.

Table with columns for Use Group or Space Designation, (A) Area, (B) Area, (C) Area, (D) Area, (E) Area, (F) Area.

Table with columns for Use Group or Space Designation, (A) Area, (B) Area, (C) Area, (D) Area, (E) Area, (F) Area.

AAA AUTO CLUB GROUP
TAMPA, FLORIDA 33607
1701 NORTH WESTSHORE BLVD.

GRAPHIC SYMBOLS



ABBREVIATIONS

Table listing abbreviations for structural, mechanical, and electrical components.

MATERIALS

Table listing materials such as Earth, Porous Fill, Roof, Lightweight Concrete, etc.

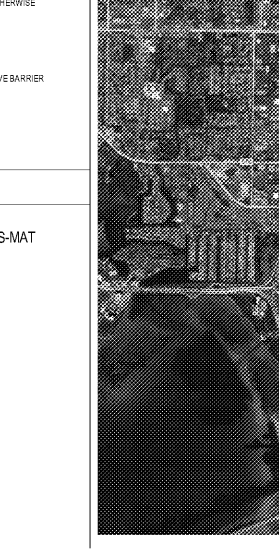
DRAWING INDEX

Table listing drawing titles and sheet numbers for General, Civil, Mechanical, and Architecture.

GENERAL PROJECT NOTES

- 1. CONCEALED SHEATHING MATERIALS SHALL BE NON-COMBUSTIBLE...
2. ALL CONCEALED WOOD BLOCKING SHALL BE FRT.
3. G.C. IS TO PROVIDE CONSTRUCTION IN COMPLIANCE WITH ANSI 117.1, 2017

AREA MAP



UDS SHEET DESIGNATORS

Table defining UDS sheet designators for Level 1 (Discipline Designators) and Level 2 (Sheet Type Designators).

Progressive.com
THE AUTO CLUB GROUP
AAA - CAR CARE CENTER
TAMPA, FL 33607
1701 NORTH WESTSHORE BLVD.

ISSUANCE
REVISIONS
NO. DATE DESCRIPTION
FILE NUMBER 79890009
PROJECT MANAGER
PROFESSIONAL
DRAWN BY
CHECKED BY
PROJECT INFORMATION
G-001

6/22/2018 10:32:36 AM
D:\Power User\1701NW\1701NW000000 - Westshore - Central - 2018.dwg

Order Plans