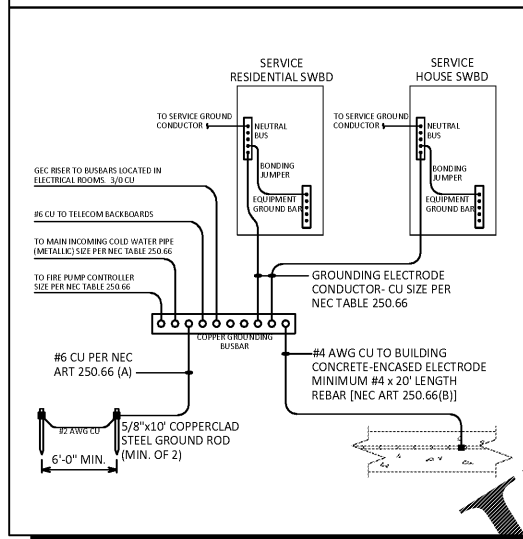
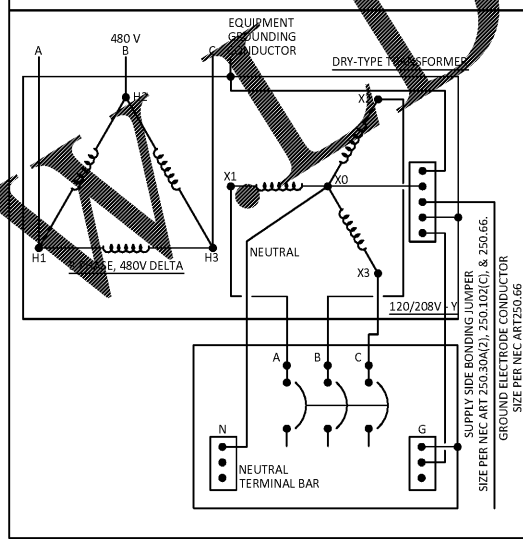




### MAIN GROUNDING ELECTRODE SYSTEM



### DRY TYPE TRANSFORMER GROUNDING SYSTEM

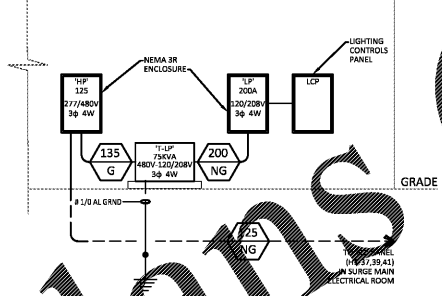


### FEEDER SCHEDULE

FEEDER DESIGNATION ##/ NG	CONDUCTOR MATERIAL (AL/CU)	# OF SETS	(75°C) CONDUCTORS PER SET			CONDUIT SIZE: 3 PHASE (NEUTRAL & GROUND) (PER SET)
			PHASE CONDUCTORS (PER SET)	(N) NEUTRAL CONDUCTOR (PER SET)	(G) GROUND CONDUCTOR (PER SET)	
15	CU	1	3 # 12	1 # 12	1 # 12	3/4"
20	CU	1	3 # 12	1 # 12	1 # 12	3/4"
25	CU	1	3 # 10	1 # 10	1 # 10	3/4"
35	CU	1	3 # 8	1 # 8	1 # 10	3/4"
50	CU	1	3 # 8	1 # 8	1 # 10	3/4"
60	CU	1	3 # 6	1 # 6	1 # 10	3/4"
65	CU	1	3 # 6	1 # 6	1 # 8	1"
85	CU	1	3 # 4	1 # 4	1 # 8	1"
100	AL	1	3 # 1	1 # 1	1 # 6	1-1/4"
120	AL	1	3 # 1/0	1 # 1/0	1 # 4	1-1/4"
135	AL	1	3 # 2/0	1 # 2/0	1 # 4	2"
150	AL	1	3 # 3/0	1 # 3/0	1 # 4	2"
180	AL	1	3 # 4/0	1 # 4/0	1 # 4	2-1/2"
200	AL	1	3 # 3/0	1 # 250	1 # 4	3"
230	AL	1	3 # 300	1 # 300	1 # 2	3"
250	AL	1	3 # 350	1 # 350	1 # 2	3"
270	AL	1	3 # 400	1 # 400	1 # 2	3"
300	AL	1	3 # 500	1 # 500	1 # 2	4"
350	AL	2	3 # 4/0	1 # 4/0	1 # 1	2-1/2"
400	AL	2	3 # 500	1 # 250	1 # 1	3"
460	AL	1	3 # 300	1 # 300	1 # 1/0	3"
500	AL	1	3 # 350	1 # 350	1 # 1/0	3"
600	AL	1	3 # 500	1 # 500	1 # 2/0	4"
700	AL	3	3 # 350	1 # 350	1 # 3/0	3"
800	AL	3	3 # 400	1 # 400	1 # 3/0	3"
1000	AL	4	3 # 350	1 # 350	1 # 4/0	3"
1200	AL	4	3 # 500	1 # 500	1 # 250	4"
1800	AL	5	3 # 500	1 # 500	1 # 350	4"
1600	AL	5	3 # 600	1 # 600	1 # 350	4"
2000	AL	6	3 # 600	1 # 600	1 # 400	4"
2500	AL	8	3 # 600	1 # 600	1 # 600	4"
3000	AL	9	3 # 600	1 # 600	1 # 600	4"
3200	AL	10	3 # 600	1 # 600	1 # 600	4"
3500	AL	11	3 # 600	1 # 600	1 # 600	4"
4000	AL	12	3 # 600	1 # 600	1 # 600	4"

NOTES:  
1. ALL FEEDERS AND GROUNDS LESS THAN 100 AMPS SHALL BE COPPER, (UNLESS NOTED OTHERWISE)  
2. ALL FEEDERS AND GROUNDS 100 AMPS AND GREATER SHALL BE ALUMINUM, (UNLESS NOTED OTHERWISE)  
3. FEEDER SIZE SHALL BE ADJUSTED AS REQUIRED BY CODE FOR ACTUAL FEEDER LENGTH.  
TOTAL UNBALANCED CONNECTED LOAD PER N.E.C.  
EXAMPLE:  
1. 1000NG = INDICATES 4 SETS OF 3 # 350KCMIL PHASE CONDUCTORS + 1 # 350KCMIL NEUTRAL CONDUCTOR + 1 # 4/0 GROUND CONDUCTOR (PER SET).

### CORE BLDG. OUTDOOR MOUNTED



ELECTRICAL RISER DIAGRAM - PLAZA  
NOT TO SCALE

Order Plans @ WWW.WWVPlans.COM

Key Plan: G

PDI - PLAZA  
1000 118th Ave North  
Saint Petersburg, FL 33716

CADD Technician: E. Cruz / Date Signed:  
Designer: A. Baez  
Engineer: A. Zotescu  
Supervisor:

06/29/2018  
Permit Set  
ELECTRICAL RISER &  
DETAILS - PLAZA  
Date Issued:  
June 29, 2018  
Sheet Number:

E5.01