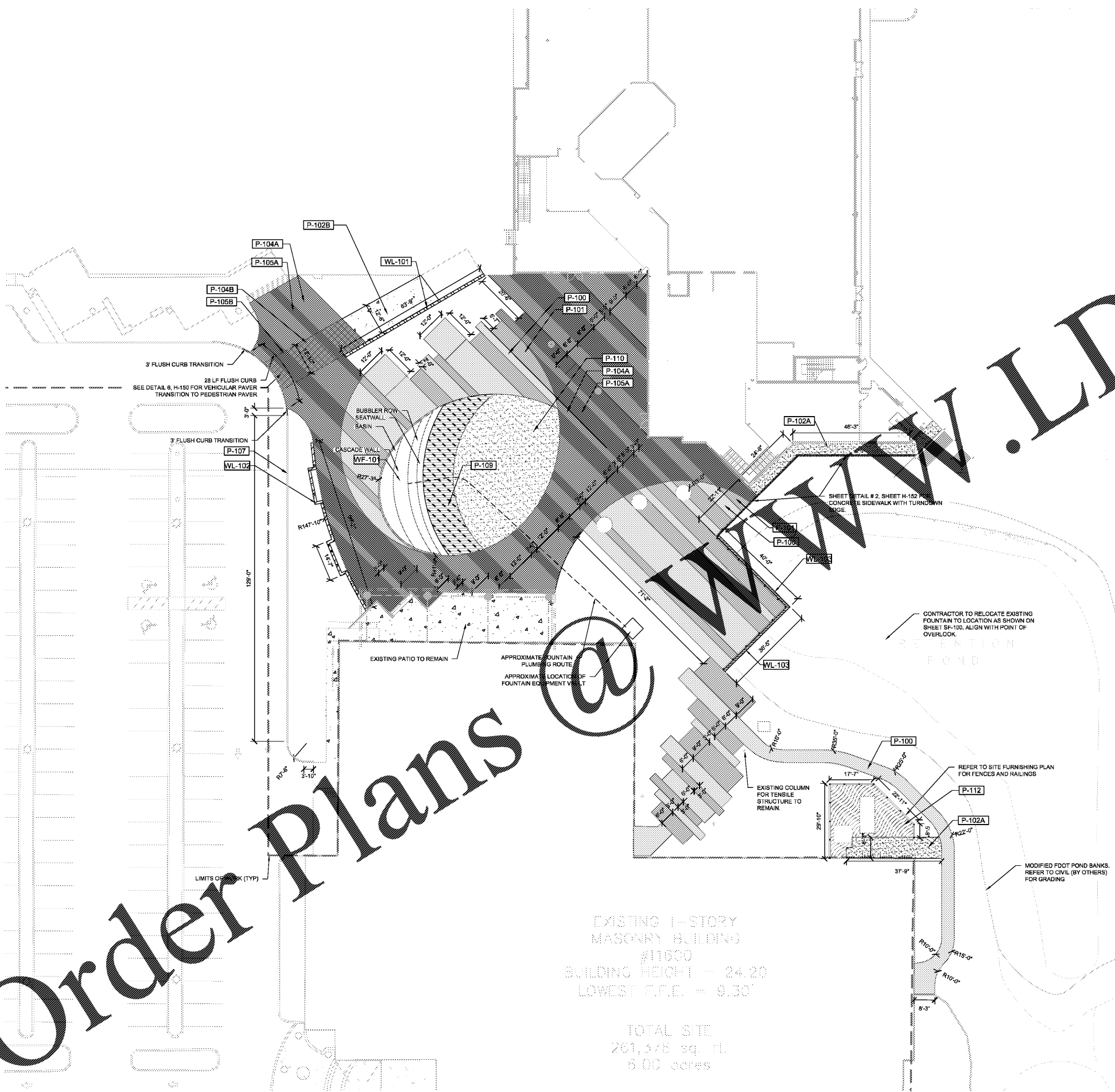


This document, together with the concepts and designs presented herein, is intended only for the specific purpose and client for which it was prepared. Reuse of and improper reliance on this document without written authorization and adaptation by Kimley-Horn and Associates, Inc. shall be without liability to Kimley-Horn and Associates, Inc.



REFERENCE NOTES SCHEDULE

SYMBOL	PAVING DESCRIPTION	QTY	DETAIL
[Symbol]	P-100 CONCRETE - LIGHT FINISH. REFER TO CONCRETE FINISH NOTES	4,549 SF	11H-150
[Symbol]	P-101 CONCRETE - DARK FINISH. REFER TO CONCRETE FINISH NOTES	3,207 SF	11H-150
[Symbol]	P-102A 4" STANDARD CONCRETE SIDEWALK, LIGHT BROOM FINISH	301 SF	11H-150
[Symbol]	P-102B 6" FIBER REINFORCED HEAVY DUTY CONCRETE, LIGHT BROOM FINISH	2,851 SF	11H-150
[Symbol]	P-104A PEDESTRIAN PAVER LIGHT	4,138 SF	11H-150
[Symbol]	P-104B VEHICULAR PAVER LIGHT	371 SF	11H-150
[Symbol]	P-105A PEDESTRIAN PAVER DARK	4,168 SF	11H-150
[Symbol]	P-105B VEHICULAR PAVER DARK	114 SF	11H-150
[Symbol]	P-107 TYPE D CURB		81H-150
[Symbol]	P-109 12" X 48" X 3/4" SUNDECK PORCELIN TILE PAVED BY BELGARD, COLOR TO BE CLASSIC	811 SF	10H-150
[Symbol]	P-110 SYNTHETIC TURF BY DUPONT FOR FURNISHING. TYPE TO BE SELECTED BY OWNER APPROVED	1,910 SF	21H-150
[Symbol]	P-112 #57 STONE 1" MINIMUM DEPTH OVER GEOTEXTILE FABRIC, SUBGRADE COMPACTED TO 98% STANDARD PROCTOR	482 SF	71H-150

SYMBOL	WATER FEATURE DESCRIPTION	QTY	DETAIL
[Symbol]	WL-101 FOUNTAIN		11H-155
[Symbol]	WL-102 RETAINING WALL	142 SF	11H-152
[Symbol]	WL-103 MODULAR RETAINING WALL WITH SEATWALL BENCH	79 SF	54H-154
[Symbol]	WL-104		

SYMBOL	WALL DESCRIPTION	QTY	DETAIL
[Symbol]	WL-101 RETAINING WALL	142 SF	11H-152
[Symbol]	WL-102 RETAINING WALL WITH SEATWALL BENCH	79 SF	54H-154
[Symbol]	WL-103 MODULAR RETAINING WALL, DIAMOND PRO STRAIGHT FACE RETAINING WALL SYSTEM, STRAIGHT SPLIT WITH CAP, COLOR TO BE NATURAL OR APPROVED EQUAL. CONTRACTOR TO SUBMIT SHOP DRAWINGS TO OWNER'S REPRESENTATIVE FOR REVIEW AND APPROVAL PRIOR TO CONSTRUCTION. REFER TO CIVIL PLANS FOR DETAILS.		

CONCRETE FINISH NOTES:

CONCRETE FINISH OPTIONS
 CONTRACTOR SHALL FURNISH ONE 10'X10' MOCKUP OF EACH OF THE FINISH TREATMENTS LISTED BELOW FOR FIELD REVIEW AND APPROVAL BY OWNER AND LANDSCAPE ARCHITECT. MULTIPLE 10'X10' MOCKUPS OF EACH FINISH TREATMENT MAY BE REQUIRED UNTIL APPROVAL IS RECEIVED. APPROVED MOCKUP WILL ESTABLISH THE MINIMUM ACCEPTABLE STANDARD FOR FINISH AND APPEARANCE OF ALL REMAINING CONCRETE WORK. CONCRETE WORK INSTALLED WITHIN PROJECT AREA THAT DOES NOT MEET THE MOCKUP STANDARD SHALL BE REMOVED AND REPLACED BY THE CONTRACTOR AT NO ADDITIONAL COST TO THE OWNER.

CONCRETE MIX DESIGN NOTES:

- DARK AGGREGATE MIX SHALL BE A STANDARD GREY CONCRETE MIX WITH AN ADDITIVE AGGREGATE CONSISTING OF BLACK GRANITE CHIPS OR DARK STONE BLEND. AGGREGATE SHALL BE 3/8" - 7/8" IN SIZE
- STANDARD MIX SHALL BE A STANDARD GREY CONCRETE MIX

TREATMENT 1:

- LIGHT BANDS: DARK AGGREGATE MIX WITH LIGHT SANDBLAST FINISH TO EXPOSE 10% DARK AGGREGATE AND 90% GREY CONCRETE
- DARK BANDS: DARK AGGREGATE MIX WITH WATER WASH FINISH TO EXPOSE 60% DARK AGGREGATE AND 40% GREY CONCRETE

TREATMENT 2:

- LIGHT BANDS: STANDARD MIX WITH LIGHT BROOM FINISH
- DARK BANDS: DARK AGGREGATE MIX WITH HEAVY SANDBLAST FINISH TO EXPOSE 50% DARK AGGREGATE AND 50% GREY CONCRETE

TREATMENT 3:

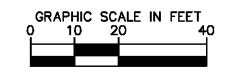
- LIGHT BANDS: STANDARD MIX WITH LIGHT BROOM FINISH
- DARK BANDS: STANDARD MIX WITH WATER WASH FINISH

NOTES:

- SITE FURNISHINGS CALLOUTS ARE TYPICAL CALLOUTS. REFER TO ALL LOCATIONS SHOWN ON PLAN FOR QUANTITY AND PLACEMENT LOCATIONS.
- ALL FURNISHINGS SHALL BE SURFACE MOUNTED PER MANUFACTURERS RECOMMENDATIONS, UNLESS OTHERWISE NOTED. CONTRACTOR TO SUBMIT SHOP DRAWINGS OF ALL FURNISHINGS TO OWNER FOR REVIEW AND APPROVAL PRIOR TO ORDERING.
- CONTRACTOR SHALL SUBMIT SHOP DRAWINGS FOR ALL SITE FURNISHINGS FOR REVIEW AND APPROVAL PRIOR TO ORDERING.
- LANDSCAPE ARCHITECT RESERVES THE RIGHT TO FIELD ADJUST ALL SITE FURNISHING LOCATIONS.

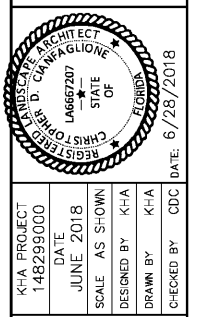
Order Plans

www.ldonline.com



No.	REVISIONS	DATE	BY

Kimley»Horn
 © 2018 KIMLEY-HORN AND ASSOCIATES, INC.
 1777 MAIN STREET, SUITE 200, SARASOTA, FL 34236
 WWW.KIMLEY-HORN.COM CA 0000686



PLAZA HARDSCAPE PLAN

PDI CAMPUS
 PREPARED FOR
POWER DESIGN, INC.
 ST. PETERSBURG

SHEET NUMBER
H-100

