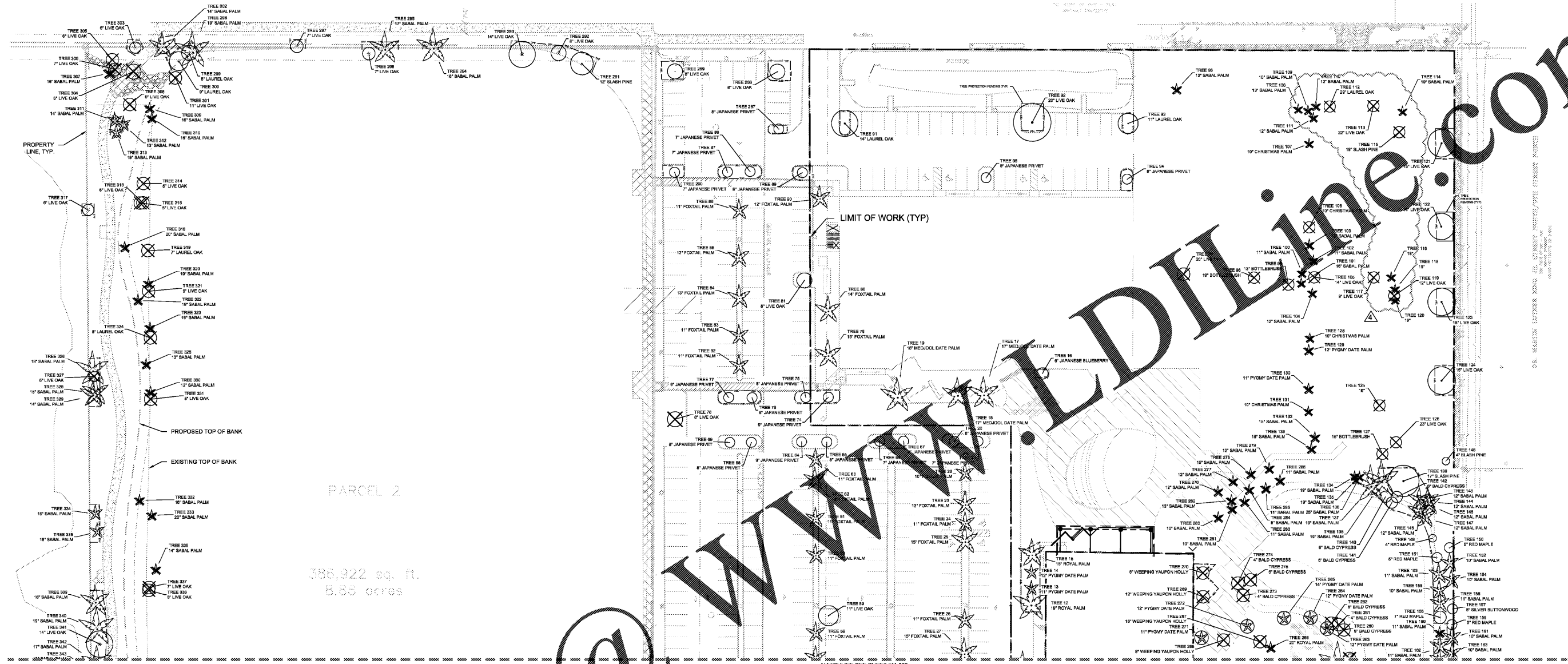


Plotted By: hcrison, Aiso: Street Set: PDI Campus Layout TM-101 TREE MITIGATION PLAN June 28, 2018 08:53:00am K:\SAR_LRG\148299000 - pdf campus improvements\CAD\Drawings\TM-101 TREE MITIGATION PLAN.dwg
 This document, together with the concepts and designs presented herein, is intended only for the specific purpose and client for which it was prepared. Reuse of and improper reliance on this document without written authorization and adaptation by Kimley-Horn and Associates, Inc. shall be without liability to Kimley-Horn and Associates, Inc.



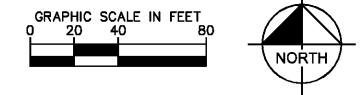
PARCEL 2
 386,922 sq. ft.
 8.88 acres

TREE SYMBOL KEY

- TREE TO REMAIN
- TREE TO BE REMOVED
- PALM TO REMAIN
- PALM TO BE REMOVED
- PALM TO BE RELOCATED
- TREE PROTECTION FENCING

NOTES

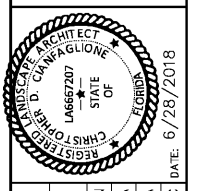
1. SEE SHEET TM-103 FOR TREE MITIGATION DATA AND CALCULATIONS.
2. SEE SHEET TM-150 FOR TREE MITIGATION NOTES AND DETAILS.
3. TREE PROTECTION FENCING (T.P.F.) IS SHOWN IN THE PLANS. ANY WORK WITHIN THE T.P.F. SHALL BE DONE IN ACCORDANCE WITH THE TREE MITIGATION NOTES SHEET TM-150.
4. T.P.F. MUST REMAIN INTACT THROUGHOUT CONSTRUCTION. UPON COMPLETION OF EXISTING CONDITIONS, T.P.F. SHALL BE ADJUSTED TO REMAIN AROUND TREES TO REMAIN THROUGHOUT CONSTRUCTION.
5. EXISTING TREES SHALL BE MAINTAINED UNDER DIRECTION OF AN ISA CERTIFIED ARBORIST ACCORDING TO CITY OF PORT CHARLOTTE ORDINANCES.
6. SEE SCHEDULE FOR ALL PROPOSED REPLACEMENT TREES.
7. ALL POOR HEALTH TREES REPORTED IN THE TREE OBSERVATION DATA HAVE BEEN EXCLUDED FROM THE REPLACEMENT CALCULATIONS.
8. TREE MITIGATION PLANS PREPARED BY CERTIFIED ARBORIST LICENSE #FL6527



WWW.DIAGRAMS.COM

No.	REVISIONS	DATE	BY

Kimley»Horn
 © 2018 KIMLEY-HORN AND ASSOCIATES, INC.
 1777 MAIN STREET, SUITE 200, SARASOTA, FL 34236
 PHONE: 941-379-7600
 WWW.KIMLEY-HORN.COM CA 0000686



KHA PROJECT: 148299000
 DATE: JUNE 2018
 SCALE: AS SHOWN
 DESIGNED BY: KHA
 DRAWN BY: KHA
 CHECKED BY: CDC
 DATE: 6/28/2018

TREE MITIGATION PLAN

PDI CAMPUS
 PREPARED FOR
POWER DESIGN, INC.
 ST. PETERSBURG, FLORIDA

SHEET NUMBER
TM-101

