



STARBUCKS COFFEE COMPANY  
2401 UTAH AVENUE SOUTH  
SEATTLE, WASHINGTON 98134  
(206) 318-1575

THESE DRAWINGS AND SPECIFICATIONS ARE CONFIDENTIAL AND SHALL REMAIN THE SOLE PROPERTY OF STARBUCKS CORPORATION, WHICH IS THE OWNER OF THE COPYRIGHT IN THIS WORK. THEY SHALL NOT BE REPRODUCED OR TRANSMITTED IN ANY FORM OR BY ANY MEANS, ELECTRONIC OR MECHANICAL, INCLUDING PHOTOCOPYING, RECORDING, OR BY ANY INFORMATION STORAGE AND RETRIEVAL SYSTEM, WITHOUT THE PRIOR WRITTEN CONSENT OF STARBUCKS CORPORATION. THESE DRAWINGS AND SPECIFICATIONS ARE INTENDED TO EXPRESS DESIGN INTENT FOR A PROTOTYPICAL STARBUCKS STORE WHICH IS SUBJECT TO CHANGE AT ANY TIME, AND DO NOT REFLECT ACTUAL SITE CONDITIONS. NEITHER PARTY SHALL HAVE ANY OBLIGATION OR LIABILITY TO THE OTHER (EXCEPT AS STATED ABOVE), UNTIL A WRITTEN AGREEMENT IS FULLY EXECUTED BY BOTH PARTIES.

**Design Forum Architects Inc.**  
1700 W. Palm Beach Blvd., Suite 400  
P.O. Box 100  
West Palm Beach, FL 33411  
Phone: 561-833-1000  
Fax: 561-833-1001

**Design Forum Engineering**  
1700 W. Palm Beach Blvd., Suite 400  
P.O. Box 100  
West Palm Beach, FL 33411  
Phone: 561-833-1000  
Fax: 561-833-1001

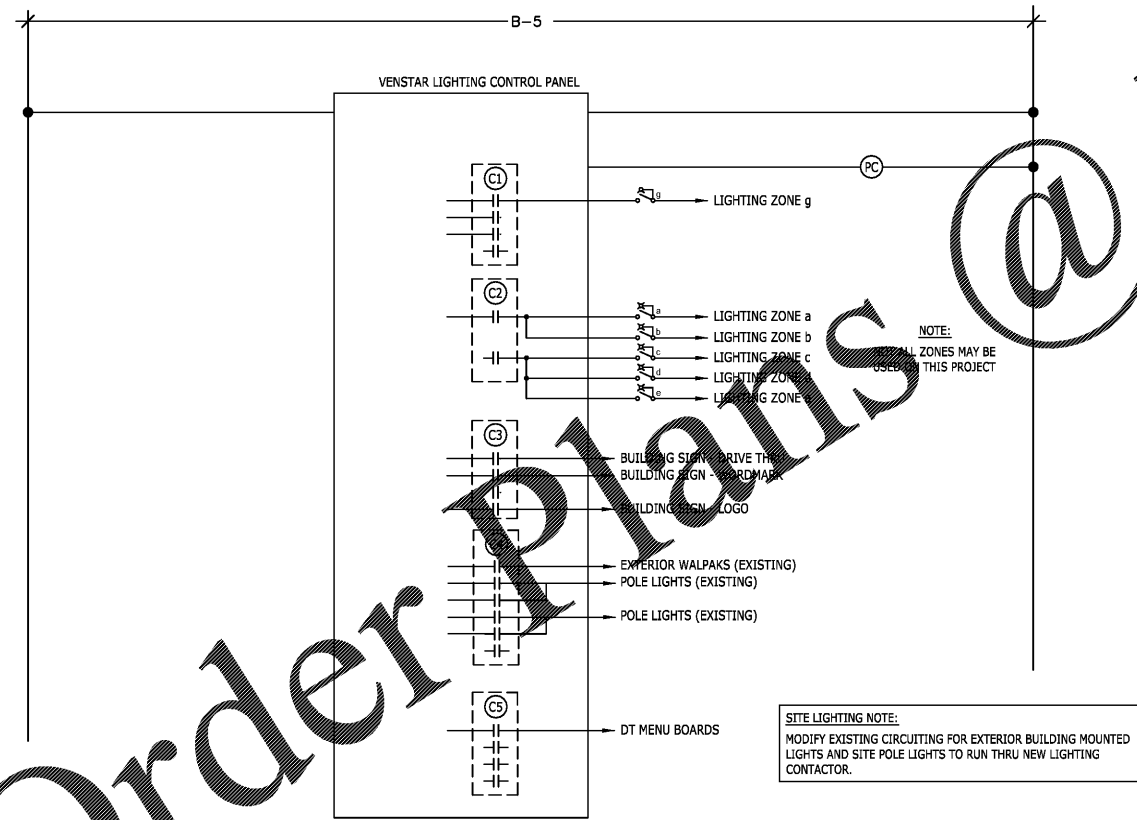
A															
ROOM		Existing panel by LL			VOLTS 208Y/120V 3P 4W			AIC Existing							
MOUNTING SURFACE		BUS AMPS 400			NEUTRAL 100%			MAIN BKR 400			LUGS FEEDTHRU				
FED FROM UTILITY															
CKT #	CIRCUIT DESCRIPTION	KVA LOAD			CKT BKR	CKT BKR	KVA LOAD			CIRCUIT DESCRIPTION	CKT #				
		A	B	C			A	B	C						
1	** RTU-1	12.2			90/3	60/3	6.84			** RTU-2	2				
3		12.2					6.84				4				
5			12.2					6.84			6				
7	DRIVE THRU WINDOW	0.36			20/1	20/1	0			** RTU SERVICE RECEIPTS (EXIST)	8				
9	* ESPRESSO	3.25			40/2	20/1	0.26			** LOGO SIGN	10				
11			3.25		1	20/1				*** W/ALPKS	12				
13	*** WORDMARK SIGN	0.96			20/1	40/2	3.9			* SANITIZER	14				
15	SPARE	0			20/1			3.9			16				
17	HAND DRYER		1.9		20/1	20/1		0.96		* U.C. REFRIGERATOR	18				
19	* U.C. REFRIGERATOR	0.96			20/1	20/1	1.3			* INSTA-HOT	20				
21	ICE MACHINE, REMOTE CONDENSOR	2.44			30/2	20/1	0.18			WATER FILTER	22				
23			2.44		1	20/1		0.9		SEATING CONVENIENCE RECEIPT	24				
25	EF-1	0.696			20/1	20/1	0.54			* PATIO RECP. SEATING CONVENIENCE RECEIPT	26				
27	SPARE	0			20/1	20/1	0			SPARE	28				
29	* INSTA-HOT		1.3		20/1	20/1		0.43		*** BOH LIGHTING	30				
31	CONVENIENCE RECEIPT	0.18			20/1	20/1	0.39			*** BACK BAR LIGHTING	32				
33	SPARE	0			20/1	20/1	1.01			*** SALES/SEATING LIGHTING	34				
35	** DUCT SMOKES	0			20/1	20/2	0.5			**** SITE LIGHTING	36				
37	** TVSS (EXISTING)	0			20/3		0.5			**** SITE LIGHTING	38				
39		0				20/2	0.5			**** SITE LIGHTING	40				
41		0					0.5			**** SITE LIGHTING	42				
LUG LOAD: PANEL B		26.1	26.4	22			55	57	53.8	TOTAL CONNECTED KVA					
							469	478	450	TOTAL CONNECTED AMPS					
LOAD TYPE		CONN. KVA			DEMAND KVA			LOAD TYPE		CONN. KVA			DEMAND KVA		
LIGHTING		8.09			10.1 (125%)			CONTINUOUS		0			0 (125%)		
LARGEST MOTOR		12.7			3.18 (125%)			HEATING		50			50 (100%)		
OTHER MOTORS		0.696			0.696 (100%)			NONCONTINUOUS		4.06			4.06 (100%)		
RECEPTACLES		13.7			11.8 (50%>10)			KITCHEN EQUIP		67.8			44.1 (65%)		
								NONCOIN/DIVERSE		0			0 (N/A)		
								TOTAL KVA:		166			124		
								TOTAL BALANCED DEMAND AMPS:					344		

NOTES:  
\* - PROVIDE GFCI TYPE CIRCUIT BREAKER/ \*\* Existing Load to remain  
\*\*\*- CIRCUIT THROUGH NEW LTG CONTROLS

B															
ROOM		New panel by Tenant			VOLTS 208Y/120V 3P 4W			AIC Match Panel A							
MOUNTING SURFACE		BUS AMPS 400			NEUTRAL 100%			MAIN BKR MLO			LUGS STANDARD				
FED FROM A															
CKT #	CIRCUIT DESCRIPTION	KVA LOAD			CKT BKR	CKT BKR	KVA LOAD			CIRCUIT DESCRIPTION	CKT #				
		A	B	C			A	B	C						
1	SPARE	0			20/1	20/2	1.25			SC BAKERY CASE	2				
3	SPARE				20/1			1.25			4				
5	LIGHTING CONTROLS	0		0.25	20/1	20/1		1.9		HAND DRYER	6				
7	SPARE	0			20/1	20/1	0.5			FUTURE	8				
9	* TURBOCHEF	3			30/2	20/1	0.36			WORKSTATION RECEIPT	10				
11			3		1	20/1		1.32		* GRINDER, * SCALE	12				
13	* TURBOCHEF	3			30/2	40/2	2.5			DRIVE THRU AIR CURTAIN	14				
15			3					2.5			16				
17	* U.C. REFRIGERATOR			0.48	20/1	20/1		1		* CUP LABELER, MOP	18				
19	*** SHOW WINDOW RECP	0.9			20/1	20/1	0.18			* COUNTER RECEIPT	20				
21	* SERVER STAND		0.18		20/1	20/1		0.72		WORKSTATION CONV RECEIPT	22				
23	* BLENDER		1.2		20/1	20/1		0.18		WORKSTATION DED RECEIPT	24				
25	* ESPRESSO	3.25			40/2	20/1	0.78			DRIVE THRU SIGN	26				
27			3.25			20/1		0.7		W/MS DATA CONCENTRATOR	28				
29	* DOUBLE DOOR REFRIGERATOR			1.08	20/1					RECEIPT	30				
31	* POS - DED. REC, * POS REC - FUTURE			0.72	20/1	20/1	0.25			** DRIVE THRU SIGN	32				
33	* FUTURE MENU BOARD		1.08		20/1	20/1				*** DT MENU BOARD	34				
35	* POS - DED. REC, * POS REC - MISC EQUIPMENT			0.9	20/1	20/1	0.26			DT DIGITAL ORDER SCREEN	36				
37	* ESPRESSO (FUTURE)	3.25			40/2	20/1	1.3			* INSTA-HOT	38				
39	SPARE		3.25			20/1		0		SPARE	40				
41	* U.C. REFRIGERATOR			0.9	20/1	40/3		3		WATER HEATER	42				
43	SPARE	0			30/2			3			44				
45								3			46				
47	* SINGLE DOOR FREEZER			1.02		20/1		0.36		* D/T TIMER	48				
49	* DOUBLE DOOR REFRIGERATOR				20/1	20/1	0			SPARE	50				
51	SPARE	0			20/1	20/1	0			SPARE	52				
53	* DOUBLE DOOR FREEZER			2.3	20/1	20/1		1.2		* BLENDER	54				
55	* DUAL BREWER	4.1			50/2	20/1	0			SPARE	56				
57			4.17			20/1		0		SPARE	58				
59	* DOUBLE DOOR FREEZER			1.3	20/1	20/1		1.08		* D/T COMMUNICATIONS, * D/T TIMER	60				
LUG LOAD: PANEL B		26.1	26.4	22			26.1	26.4	22	TOTAL CONNECTED KVA					
							233	230	184	TOTAL CONNECTED AMPS					
LOAD TYPE		CONN. KVA			DEMAND KVA			LOAD TYPE		CONN. KVA			DEMAND KVA		
LIGHTING		2.45			3.06 (125%)			CONTINUOUS		0			0 (125%)		
LARGEST MOTOR		0			0 (125%)			HEATING		14			14 (100%)		
OTHER MOTORS		0			0 (100%)			NONCONTINUOUS		2.16			2.16 (100%)		
RECEPTACLES		8.92			8.92 (50%>10)			KITCHEN EQUIP		47			30.5 (65%)		
								NONCOIN/DIVERSE		0			0 (N/A)		
								TOTAL KVA:		74.5			58.7		
								TOTAL BALANCED DEMAND AMPS:					163		

NOTES:  
\* - PROVIDE GFCI TYPE CIRCUIT BREAKER/ \*\* Existing Load to remain  
\*\*\*- CIRCUIT THROUGH NEW LTG CONTROLS

LIGHTING CONTROL NOTES:  
LIGHTING CONTROL BY VENSTAR EMS SYSTEM.  
SEE DETAILS ON E-5002 FOR VENSTAR EMS SYSTEM CONNECTION DETAILS.



LIGHTING CONTROL DIAGRAM

**GROUND FAULT PROTECTION NOTES:**

PROVIDE GFCI PROTECTION AS REQUIRED BY NEC 201.8.

CIRCUITS REQUIRING GFCI PROTECTION IDENTIFIED WITH \* ON PANEL SCHEDULES.

ABOVE-COUNTER RECEPTACLES THAT ARE READILY ACCESSIBLE AND WITHIN REACH OF PARTNERS SHALL BE GFCI TYPE.

BELOW-COUNTER RECEPTACLES, OR RECEPTACLES THAT ARE DIFFICULT TO REACH OR REQUIRE MOVING EQUIPMENT TO RESET, AND ARE NOT READILY ACCESSIBLE SHALL BE PROTECTED BY GFI CIRCUIT BREAKERS.

WHERE THE AVAILABLE SHORT CIRCUIT CURRENT EXCEEDS 22,000 AMPS AT THE PANELBOARD, CONTACT CIRCUIT BREAKER MANUFACTURER AND PROVIDE GFCI TYPE CIRCUIT BREAKER THAT SERIES RATES WITH PANEL OVER CURRENT PROTECTION IF AVAILABLE.

WHERE THE AVAILABLE SHORT CIRCUIT CURRENT EXCEEDS 22,000 AMPS AT THE PANELBOARD, AND GFCI BREAKERS ARE NOT AVAILABLE, PROVIDE DEAD-FRONT GFCIS (IN A READILY ACCESSIBLE LOCATION) TO SERVE RECEPTACLES THAT ARE NOT READILY ACCESSIBLE.

Revision Schedule		
Rev	Date	Description

PROJECT NAME:  
**CYPRESS GARDENS  
BLVD & ROOSEVELT**

PROJECT ADDRESS:  
**5709 CYPRESS GARDENS BLVD.  
WINTER HAVEN, FL 33884**

STORE #: 50175  
PROJECT #: 73763-001  
ISSUE DATE: 05/02/2018  
PROGRAM MANAGER: ROMINA VIGNOLO  
LEED ©AP: STARBUCKS  
PRODUCTION DESIGNER: MICHAEL B.SARKA  
CHECKED BY: ANA COSTANZO

SHEET TITLE:  
**PANELBOARD  
SCHEDULES**

SCALE: NTS  
SHEET:  
**E-6001**