



STARBUCKS COFFEE COMPANY
2401 UTAH AVENUE SOUTH
SEATTLE, WASHINGTON 98134
(206) 318-1575

THESE DRAWINGS AND SPECIFICATIONS ARE CONFIDENTIAL AND SHALL REMAIN THE SOLE PROPERTY OF STARBUCKS CORPORATION, WHO IS THE OWNER OF THE COPYRIGHT IN THIS WORK. THEY SHALL NOT BE REPRODUCED IN WHOLE OR IN PART, SHARED WITH THIRD PARTIES OR USED IN ANY MANNER ON OTHER PROJECTS OR EXTENSIONS TO THIS PROJECT WITHOUT THE PRIOR WRITTEN CONSENT OF STARBUCKS CORPORATION. THESE DRAWINGS AND SPECIFICATIONS ARE INTENDED TO EXPRESS DESIGN INTENT FOR A PROTOTYPICAL STARBUCKS STORE WHICH IS SUBJECT TO CHANGE AT ANY TIME, AND DO NOT REFLECT ACTUAL SITE CONDITIONS. NEITHER PARTY SHALL HAVE ANY OBLIGATION OR LIABILITY TO THE OTHER (EXCEPT AS STATED ABOVE), UNTIL A WRITTEN AGREEMENT IS FULLY EXECUTED BY BOTH PARTIES.

Design Forum Architects Inc.

Design Forum Engineering

7500 W. Pine Ridge Way, Suite 400
Coeur d'Alene, ID 83814
208.765.4300

7500 W. Pine Ridge Way, Suite 400
Coeur d'Alene, ID 83814
208.765.4300

7500 W. Pine Ridge Way, Suite 400
Coeur d'Alene, ID 83814
208.765.4300

7500 W. Pine Ridge Way, Suite 400
Coeur d'Alene, ID 83814
208.765.4300

7500 W. Pine Ridge Way, Suite 400
Coeur d'Alene, ID 83814
208.765.4300

7500 W. Pine Ridge Way, Suite 400
Coeur d'Alene, ID 83814
208.765.4300

7500 W. Pine Ridge Way, Suite 400
Coeur d'Alene, ID 83814
208.765.4300

7500 W. Pine Ridge Way, Suite 400
Coeur d'Alene, ID 83814
208.765.4300

7500 W. Pine Ridge Way, Suite 400
Coeur d'Alene, ID 83814
208.765.4300

7500 W. Pine Ridge Way, Suite 400
Coeur d'Alene, ID 83814
208.765.4300

7500 W. Pine Ridge Way, Suite 400
Coeur d'Alene, ID 83814
208.765.4300

7500 W. Pine Ridge Way, Suite 400
Coeur d'Alene, ID 83814
208.765.4300

7500 W. Pine Ridge Way, Suite 400
Coeur d'Alene, ID 83814
208.765.4300

7500 W. Pine Ridge Way, Suite 400
Coeur d'Alene, ID 83814
208.765.4300

7500 W. Pine Ridge Way, Suite 400
Coeur d'Alene, ID 83814
208.765.4300

7500 W. Pine Ridge Way, Suite 400
Coeur d'Alene, ID 83814
208.765.4300

7500 W. Pine Ridge Way, Suite 400
Coeur d'Alene, ID 83814
208.765.4300

7500 W. Pine Ridge Way, Suite 400
Coeur d'Alene, ID 83814
208.765.4300

7500 W. Pine Ridge Way, Suite 400
Coeur d'Alene, ID 83814
208.765.4300

7500 W. Pine Ridge Way, Suite 400
Coeur d'Alene, ID 83814
208.765.4300

7500 W. Pine Ridge Way, Suite 400
Coeur d'Alene, ID 83814
208.765.4300

7500 W. Pine Ridge Way, Suite 400
Coeur d'Alene, ID 83814
208.765.4300

7500 W. Pine Ridge Way, Suite 400
Coeur d'Alene, ID 83814
208.765.4300

7500 W. Pine Ridge Way, Suite 400
Coeur d'Alene, ID 83814
208.765.4300

7500 W. Pine Ridge Way, Suite 400
Coeur d'Alene, ID 83814
208.765.4300

7500 W. Pine Ridge Way, Suite 400
Coeur d'Alene, ID 83814
208.765.4300

7500 W. Pine Ridge Way, Suite 400
Coeur d'Alene, ID 83814
208.765.4300

7500 W. Pine Ridge Way, Suite 400
Coeur d'Alene, ID 83814
208.765.4300

7500 W. Pine Ridge Way, Suite 400
Coeur d'Alene, ID 83814
208.765.4300

7500 W. Pine Ridge Way, Suite 400
Coeur d'Alene, ID 83814
208.765.4300

7500 W. Pine Ridge Way, Suite 400
Coeur d'Alene, ID 83814
208.765.4300

7500 W. Pine Ridge Way, Suite 400
Coeur d'Alene, ID 83814
208.765.4300

7500 W. Pine Ridge Way, Suite 400
Coeur d'Alene, ID 83814
208.765.4300

7500 W. Pine Ridge Way, Suite 400
Coeur d'Alene, ID 83814
208.765.4300

7500 W. Pine Ridge Way, Suite 400
Coeur d'Alene, ID 83814
208.765.4300

7500 W. Pine Ridge Way, Suite 400
Coeur d'Alene, ID 83814
208.765.4300

7500 W. Pine Ridge Way, Suite 400
Coeur d'Alene, ID 83814
208.765.4300

7500 W. Pine Ridge Way, Suite 400
Coeur d'Alene, ID 83814
208.765.4300

7500 W. Pine Ridge Way, Suite 400
Coeur d'Alene, ID 83814
208.765.4300

7500 W. Pine Ridge Way, Suite 400
Coeur d'Alene, ID 83814
208.765.4300

7500 W. Pine Ridge Way, Suite 400
Coeur d'Alene, ID 83814
208.765.4300

7500 W. Pine Ridge Way, Suite 400
Coeur d'Alene, ID 83814
208.765.4300

7500 W. Pine Ridge Way, Suite 400
Coeur d'Alene, ID 83814
208.765.4300

7500 W. Pine Ridge Way, Suite 400
Coeur d'Alene, ID 83814
208.765.4300

7500 W. Pine Ridge Way, Suite 400
Coeur d'Alene, ID 83814
208.765.4300

7500 W. Pine Ridge Way, Suite 400
Coeur d'Alene, ID 83814
208.765.4300

7500 W. Pine Ridge Way, Suite 400
Coeur d'Alene, ID 83814
208.765.4300

7500 W. Pine Ridge Way, Suite 400
Coeur d'Alene, ID 83814
208.765.4300

7500 W. Pine Ridge Way, Suite 400
Coeur d'Alene, ID 83814
208.765.4300

7500 W. Pine Ridge Way, Suite 400
Coeur d'Alene, ID 83814
208.765.4300

7500 W. Pine Ridge Way, Suite 400
Coeur d'Alene, ID 83814
208.765.4300

7500 W. Pine Ridge Way, Suite 400
Coeur d'Alene, ID 83814
208.765.4300

7500 W. Pine Ridge Way, Suite 400
Coeur d'Alene, ID 83814
208.765.4300

7500 W. Pine Ridge Way, Suite 400
Coeur d'Alene, ID 83814
208.765.4300

7500 W. Pine Ridge Way, Suite 400
Coeur d'Alene, ID 83814
208.765.4300

7500 W. Pine Ridge Way, Suite 400
Coeur d'Alene, ID 83814
208.765.4300

7500 W. Pine Ridge Way, Suite 400
Coeur d'Alene, ID 83814
208.765.4300

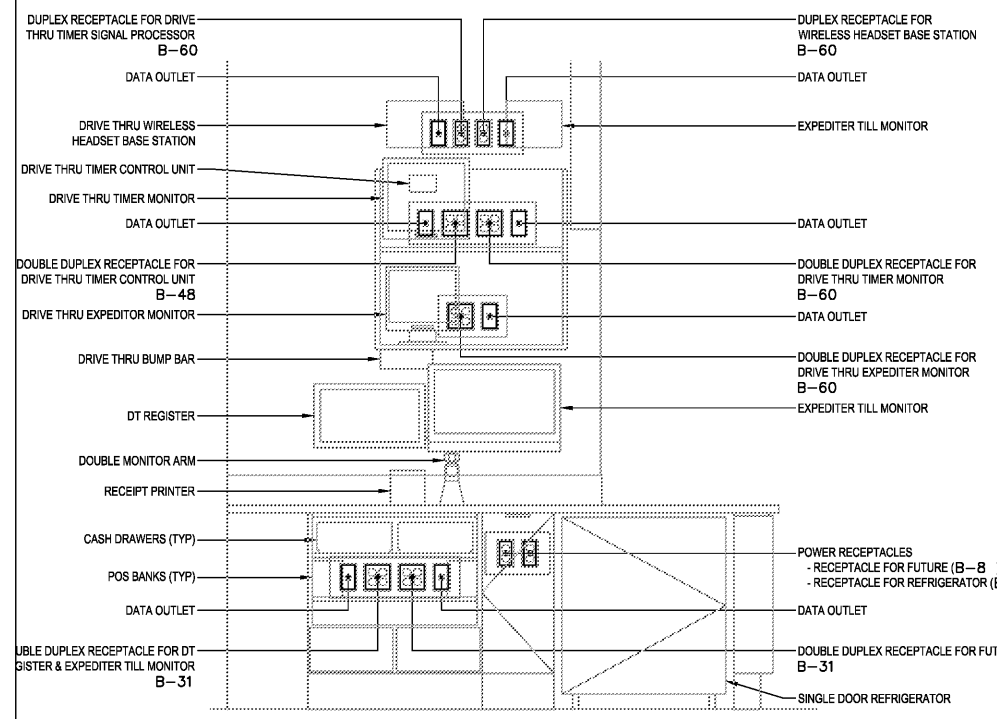
7500 W. Pine Ridge Way, Suite 400
Coeur d'Alene, ID 83814
208.765.4300

7500 W. Pine Ridge Way, Suite 400
Coeur d'Alene, ID 83814
208.765.4300

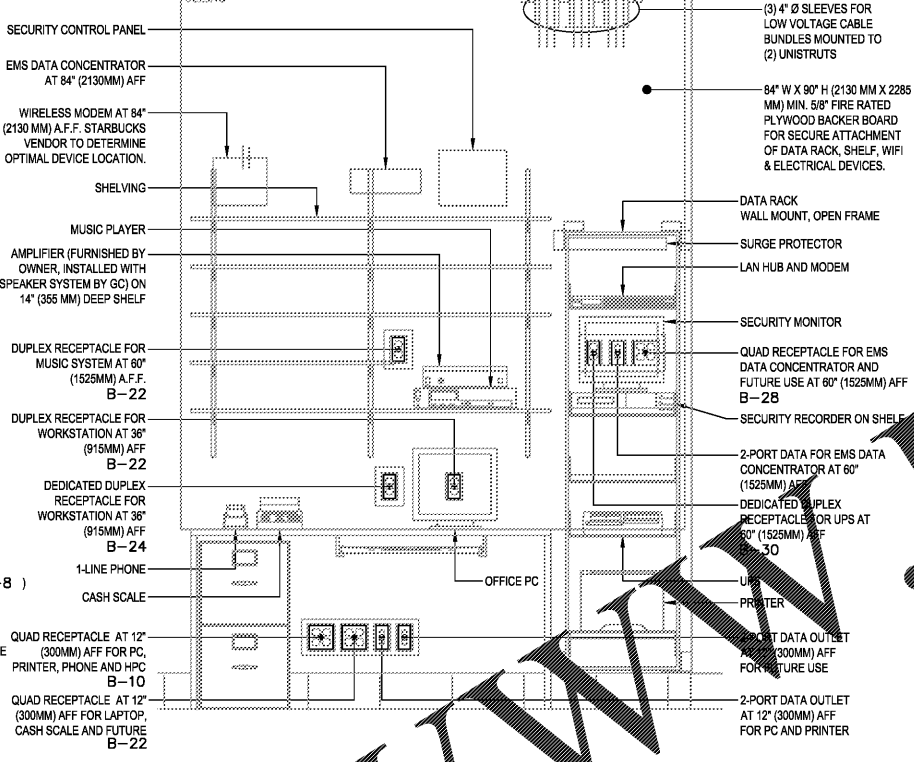
7500 W. Pine Ridge Way, Suite 400
Coeur d'Alene, ID 83814
208.765.4300

7500 W. Pine Ridge Way, Suite 400
Coeur d'Alene, ID 83814
208.765.4300

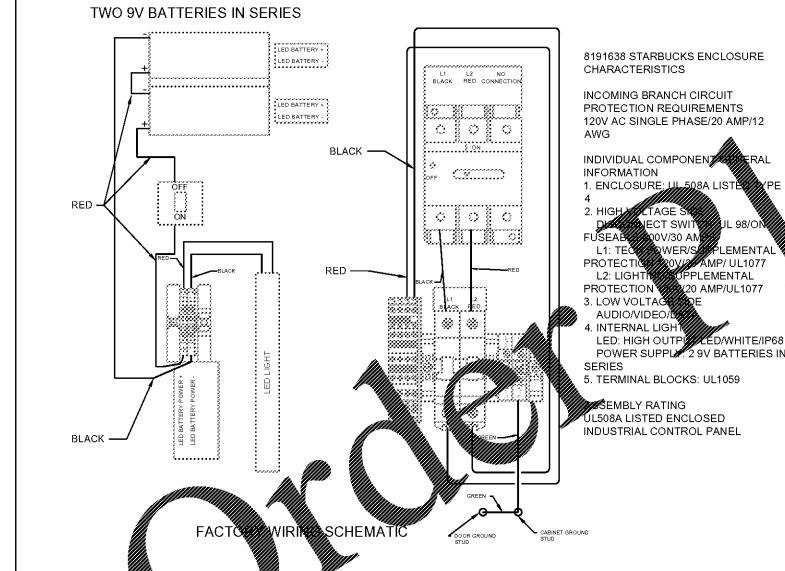
LOW VOLTAGE CABLE BUNDLES		
1 MUSIC PLAY NETWORK SPEAKERS	2 SECURITY SECURITY PANEL FUTURE USE	3 POS HIGH SPEED INTERNET DEMARC EXTENSION POS LAN DT TIMER



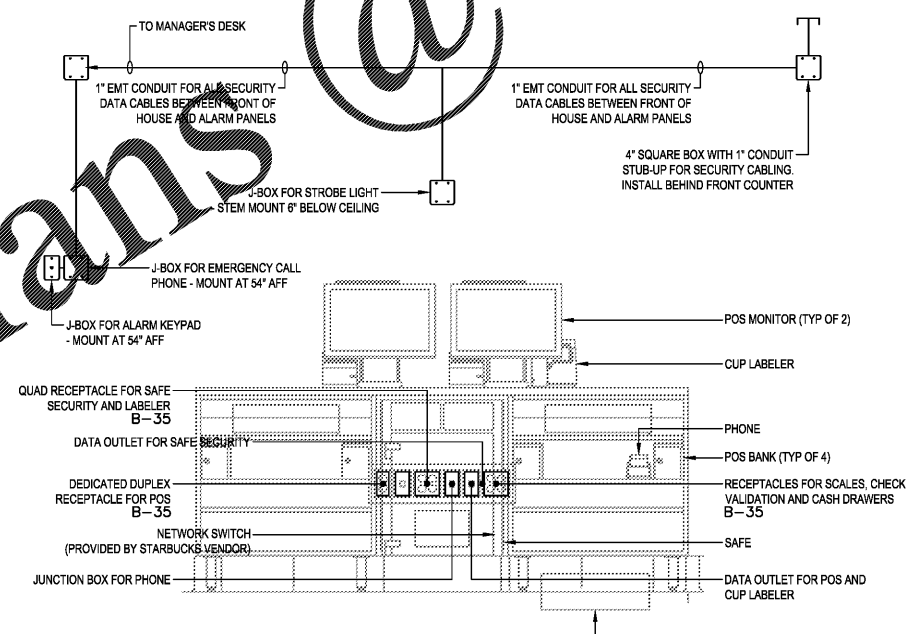
1 DRIVE-THRU POS DETAIL
Scale: NONE
SCHEMATIC



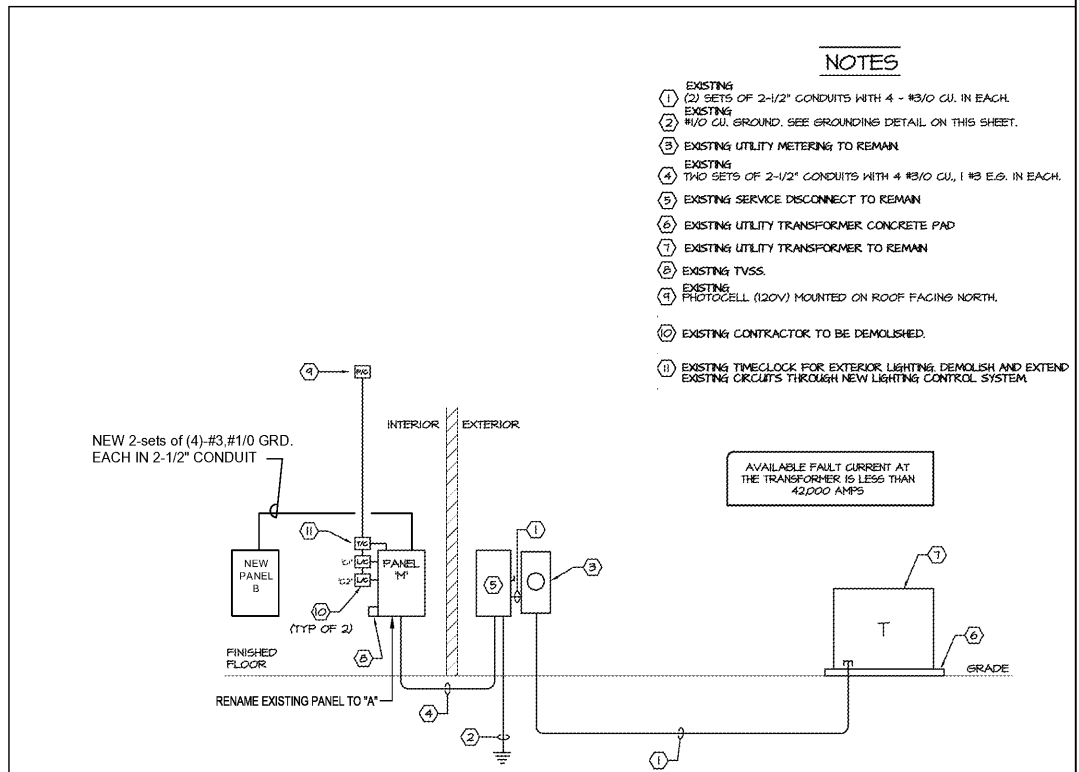
2 MANAGER'S DESK DETAIL
Scale: NONE
SCHEMATIC



4 DRIVE-THRU DCB SCHEMATIC
Scale: NONE
SCHEMATIC



5 POS DETAIL
Scale: NONE
SCHEMATIC



3 RISER DIAGRAM
Scale: NONE

- NOTES**
- EXISTING
 - (2) SETS OF 2-1/2" CONDUITS WITH 4 - #3/0 CU. IN EACH.
 - EXISTING #1/0 CU. GROUND. SEE GROUNDING DETAIL ON THIS SHEET.
 - EXISTING UTILITY METERING TO REMAIN
 - EXISTING TWO SETS OF 2-1/2" CONDUITS WITH 4 #3/0 CU, 1 #3 E.G. IN EACH.
 - EXISTING SERVICE DISCONNECT TO REMAIN
 - EXISTING UTILITY TRANSFORMER CONCRETE PAD
 - EXISTING UTILITY TRANSFORMER TO REMAIN
 - EXISTING TVSS.
 - EXISTING PHOTOCELL (120V) MOUNTED ON ROOF FACING NORTH.
 - EXISTING CONTRACTOR TO BE DEMOLISHED.
 - EXISTING TIMECLOCK FOR EXTERIOR LIGHTING. DEMOLISH AND EXTEND EXISTING CIRCUITS THROUGH NEW LIGHTING CONTROL SYSTEM.

PROJECT NAME:
**CYPRESS GARDENS
BLVD & ROOSEVELT**
PROJECT ADDRESS:
**5709 CYPRESS GARDENS BLVD.
WINTER HAVEN, FL 33884**

STORE #: 50175
PROJECT #: 73763-001
ISSUE DATE: 05/02/2018
PROGRAM MANAGER: ROMINA VIGNOLO
LEED AP: STARBUCKS
PRODUCTION DESIGNER: MICHAEL B.SARKA
CHECKED BY: ANA COSTANZO

SHEET TITLE:
ELECTRICAL DETAILS

SCALE: NTS

SHEET:
E-5001