



STARBUCKS COFFEE COMPANY  
2401 UTAH AVENUE SOUTH  
SEATTLE, WASHINGTON 98134  
(206) 318-1575

THESE DRAWINGS AND SPECIFICATIONS ARE CONFIDENTIAL AND SHALL REMAIN THE SOLE PROPERTY OF STARBUCKS CORPORATION, WHICH IS THE OWNER OF THE COPYRIGHT IN THIS WORK. THEY SHALL NOT BE REPRODUCED IN WHOLE OR IN PART, SHARED WITH THIRD PARTIES OR USED IN ANY MANNER ON OTHER PROJECTS OR EXTENSIONS TO THIS PROJECT WITHOUT THE PRIOR WRITTEN CONSENT OF STARBUCKS CORPORATION. THESE DRAWINGS AND SPECIFICATIONS ARE INTENDED TO EXPRESS DESIGN INTENT FOR A PROTOTYPICAL STARBUCKS STORE (WHICH IS SUBJECT TO CHANGE AT ANYTIME) AND DO NOT REFLECT ACTUAL SITE CONDITIONS. NEITHER PARTY SHALL HAVE ANY OBLIGATION OR LIABILITY TO THE OTHER (EXCEPT AS STATED ABOVE), UNTIL A WRITTEN AGREEMENT IS FULLY EXECUTED BY BOTH PARTIES.

**Design Forum Architects Inc.**  
1700 W. Park Place Way, Suite 400  
Coeur d'Alene, ID 83814  
208-765-1210

**Design Forum Engineering**  
1700 W. Park Place Way, Suite 400  
Coeur d'Alene, ID 83814  
208-765-1210

Revision Schedule		
Rev	Date	Description

PROJECT NAME:  
**CYPRESS GARDENS  
BLVD & ROOSEVELT**  
PROJECT ADDRESS:  
**5709 CYPRESS GARDENS BLVD.  
WINTER HAVEN, FL 33884**

STORE #: 50175  
PROJECT #: 73763-001  
ISSUE DATE: 05/02/2018  
PROGRAM MANAGER: ROMINA VIGNOLO  
LEED® AP: STARBUCKS  
PRODUCTION DESIGNER: MICHAEL B. SARKA  
CHECKED BY: ANA COSTANZO

SHEET TITLE:  
**ELECTRICAL SITE PLAN**

SCALE: NOTED

SHEET:  
**E-1001**

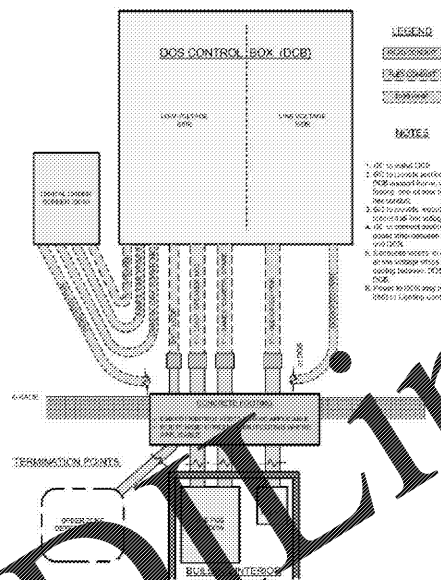
**KEY NOTES**

- PROVIDE (1) 1" PVC CONDUIT FOR POWER CONNECTION TO STARBUCKS MONUMENT SIGNAGE. PROVIDE A WEATHERPROOF JUNCTION BOX WITH DISCONNECT SWITCH.
- PROVIDE (1) 1" PVC CONDUIT FOR POWER CONNECTION TO PRE-MENU SIGN AND (1) 1" PVC CONDUIT WITH PULL STRING CONTINUOUS TO TELEPHONE BOARD FOR DATA CONNECTION. PROVIDE WEATHERPROOF JUNCTION BOX WITH DISCONNECT SWITCH.
- PROVIDE (1) 1" PVC CONDUIT FOR POWER USE TO MENU SIGN AND TO PRE-MENU SIGN.
- PROVIDE (1) 1" PVC CONDUIT FOR POWER CONNECTION TO MENU SIGN AND (1) 1" PVC CONDUIT WITH PULL STRING CONTINUOUS TO TELEPHONE BOARD FOR DATA CONNECTION. PROVIDE WEATHERPROOF JUNCTION BOX WITH DISCONNECT SWITCH.
- PROVIDE (2) 1" PVC CONDUITS FROM SPEAKER POST (AKA DOS/DCB) TO DRIVE-THRU WINDOW.
- PROVIDE (1) 1" PVC CONDUIT FROM SPEAKER POST (AKA DOS/DCB) TO ELECTRICAL PANEL. PROVIDE WEATHERPROOF JUNCTION BOX WITH DISCONNECT SWITCH.
- PROVIDE (1) 1" PVC CONDUIT FOR POWER CONNECTION TO STARBUCKS DIRECTIONAL SIGNAGE. NOTE THAT UP TO THREE DIRECTIONAL SIGNS CAN BE SERVED BY A SINGLE CIRCUIT. ADDITIONAL SIGNS REQUIRE A NEW DEDICATED CIRCUIT AND CONDUIT. PROVIDE A WEATHERPROOF JUNCTION BOX WITH DISCONNECT SWITCH.
- PROVIDE (1) 3/4" PVC CONDUIT FOR EACH OF TWO TENANT-FURNISHED DETECTOR LOOP SETS IN COORDINATION WITH TENANT CONSTRUCTION MANAGER.
- PROVIDE (1) SPARE 1" PVC CONDUIT THRU FOUNDATION WALL OUT REAR OF BUILDING, CAPPED AND TERMINATED ABOVE CEILING. VERIFY LOCATION OF STUB UP WITH TENANT'S REPRESENTATIVE.
- PROVIDE (1) 1" PVC CONDUIT TO CANOPY UPLIGHT FROM ELECTRICAL PANEL.
- PROVIDE (1) 1-1/2" CONDUIT FROM DATA RACK @ MANAGER WORKSTATION TO DRIVE-THRU BUMPS.
- CIRCUIT SERVING THIS DEVICE SHALL BE CONTROLLED BY LIGHTING CONTROL SYSTEM. FURNISH AND INSTALL ALL CONDUIT, WIRE, CONNECTIONS, AND CONTACTORS NECESSARY TO ENSURE A FUNCTIONAL SYSTEM VIA THE LIGHTING CONTROL PANEL. REFER TO DETAILS SHEET E-5001 FOR ADDITIONAL INFORMATION.
- PROVIDE (2) 1" PVC CONDUIT TO PATIO AREA FROM ELECTRICAL PANEL.

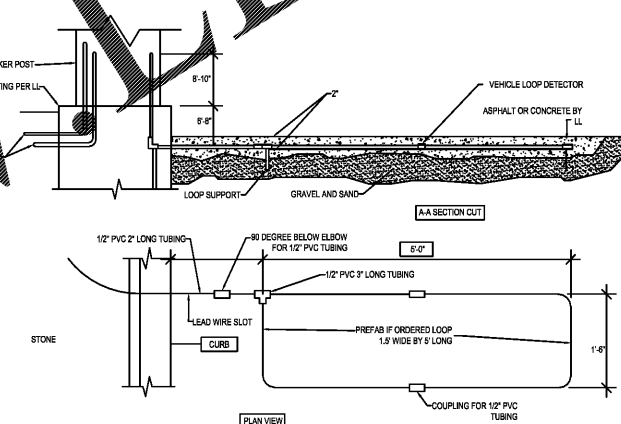
**ELECTRICAL SITE PLAN NOTES**

- VERIFY FULL SCOPE OF WORK WITH LANDLORD WORK LETTER PRIOR TO BID. NO EXTRAS OR CHANGE ORDERS SHALL BE GIVEN FOR THE GC'S FAILURE TO FULLY UNDERSTAND THE SCOPE.
- COORDINATE ALL CONDUIT ROUTING WITH ARCHITECTURAL AND CIVIL PLANS, AND OTHER TRADES.
- SIGN LOCATIONS ON THIS PLAN ARE FOR REFERENCE ONLY. ACTUAL LOCATIONS SHALL BE DETERMINED FROM THE ARCHITECTURAL AND CIVIL PLANS, AND THE CONSTRUCTION MANAGER.
- REFER TO POWER PLAN FOR PANELBOARD LOCATIONS.
- FOR ALL SIGN / MENU LOCATIONS, VERIFY ALL ELECTRICAL REQUIREMENTS WITH MANUFACTURER PRIOR TO ROUGH-IN. PROVIDE CONDUCTORS AND OVERCURRENT PROTECTION FOR A COMPLETE INSTALLATION.

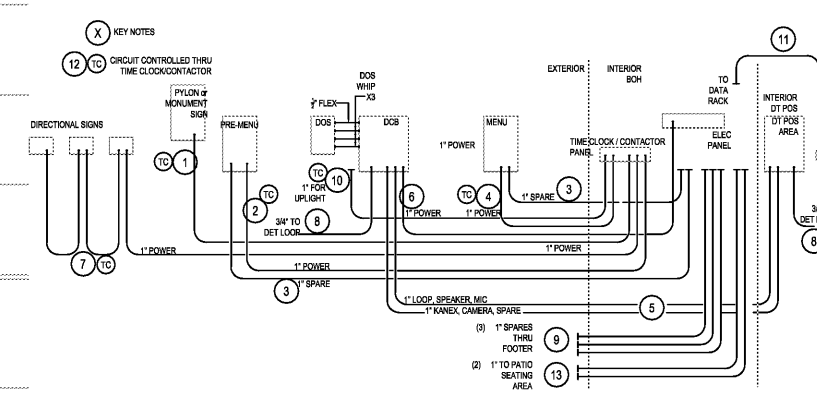
DCB CONNECTIVITY DIAGRAM - New Store Construction  
Starbucks, 9.22.16 (not to scale)



DCB CONNECTIVITY DIAGRAM  
SCALE: NTS



3 DT SENSOR LOOP DETAIL  
SCALE: NTS



4 DTE CONDUIT SCHEMATIC  
SCALE: NTS

1 ELECTRICAL SITE PLAN  
SCALE: 3/32" = 1'-0"

Order Plans @

WWW.ONLINE