

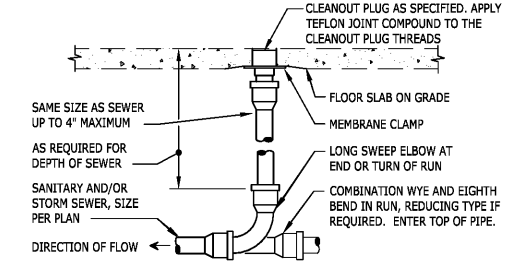
1 ELECTRIC WATER HEATER

N.T.S.

- NOTES:
1. MIXING VALVE SHALL BE EQUAL TO LEONARD MODEL 370-LF.

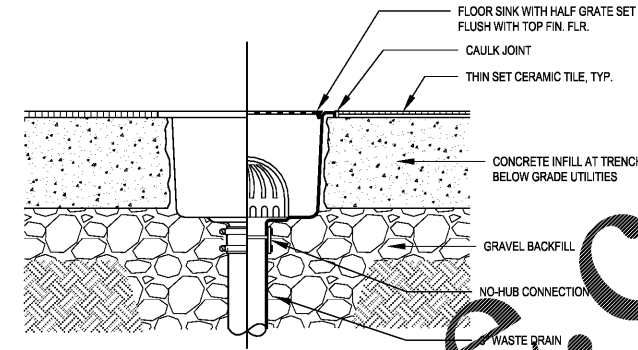
- HOT WATER HEATER NOTES:
1. MIXING VALVE SHALL BE EQUAL TO LEONARD MODEL TM-20-E.
2. RECIRCULATION PUMP: BELL & GOSSETT #NBF-9U WET ROTOR TYPE IN-LINE PUMP WITH 2800 RPM MOTOR, LEAD FREE BRONZE BODY WITH UNION CONNECTIONS, CAPACITY OF 2 GPM AT 7 FEET OF HEAD. PROVIDE WITH HONEYWELL #L6008C SURFACE MOUNTED AQUASTAT WITH SINGLE POLE DOUBLE THROW SWITCH FOR RECIRCULATOR CONTROL AND ADJUSTABLE DIFFERENTIAL SET FOR 10°F. SET AQUASTAT TO SHUT "OFF" RECIRCULATION PUMP AT WATER HEATER SET POINT AND "ON" AT 10°F BELOW SET POINT. ELECTRICAL REQUIREMENTS: 120 VOLT, 0.4 FULL LOAD AMPS.
3. TIME SWITCH: INTERMATIC #ET1705CSPST, 7 DAY, ONE CIRCUIT, SINGLE POLE SINGLE THROW, ELECTRONIC TIME SWITCH OR EQUAL. TIME SWITCH SHALL BE MOTOR RATED (1 HP @ 120 VOLT, SINGLE PHASE), MINIMUM OF 20 SET POINTS (14 ON/OFF CYCLES) AND BATTERY BACK-UP. COORDINATE WITH GC FOR INSTALLATION AND INTERLOCK OF TIME SWITCH IN SERIES WITH THE AQUASTAT AND RECIRCULATION PUMP.

PROVIDE CLEANOUT WITH ADJUSTABLE CLEANOUT TOP WITH VARIATIONS SUITABLE FOR FLOOR COVERING (CARPET MARKER, RECESSED FOR TILE, SCORRIATED FOR UNFINISHED FLOORS). CLEAN THE TOP OF EXPOSED FCO AFTER INSTALLATION.



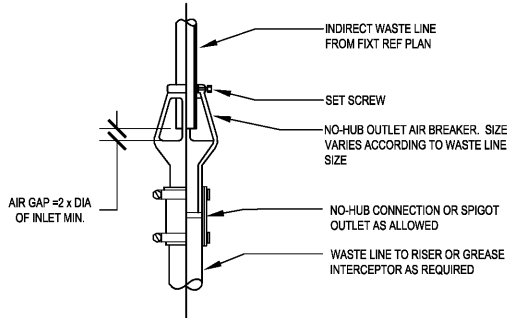
2 FLOOR CLEANOUT

N.T.S.



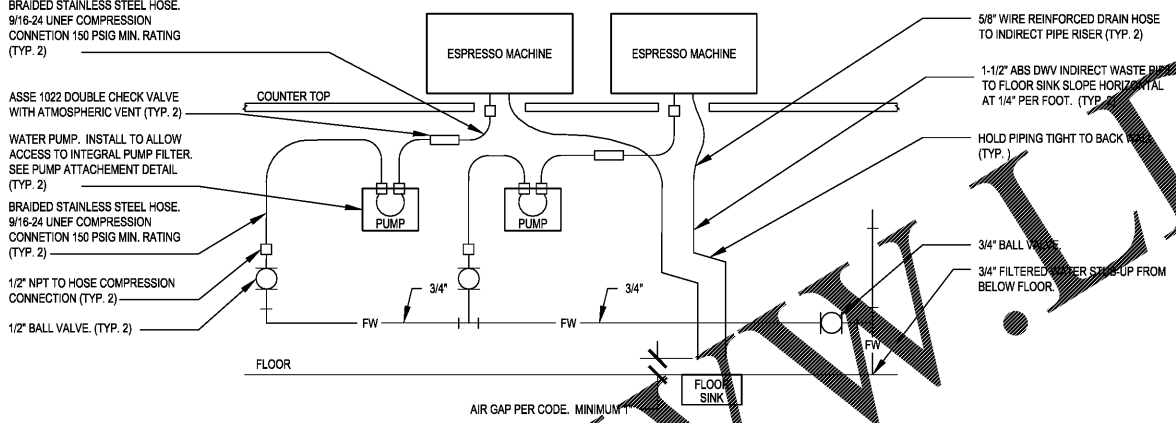
3 FLOOR SINK DETAIL

N.T.S.



4 AIR BREAKER DETAIL

N.T.S.

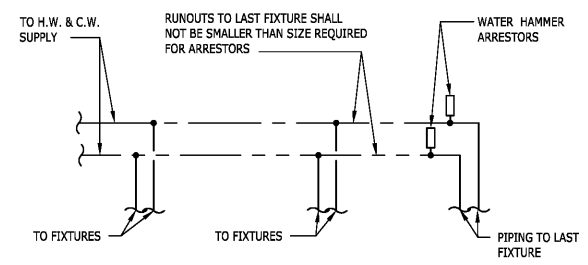


5 ESPRESSO MACHINE GENERAL PIPING CONNECTION SCHEMATIC

N.T.S.

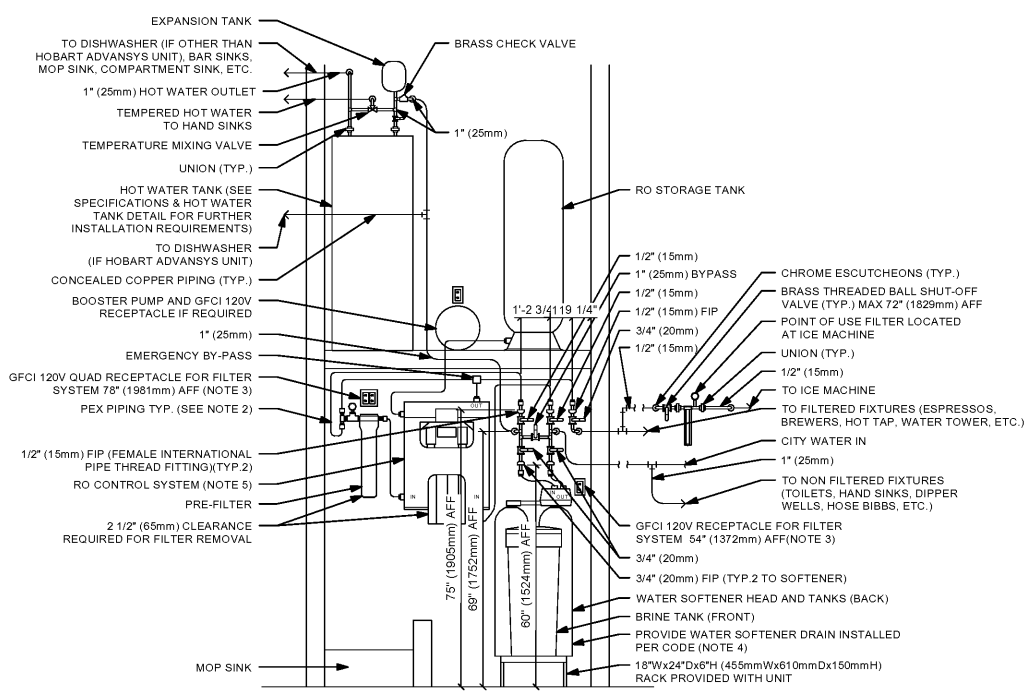
FIXTURE RATING	PIPE SIZE	CONNECTION TO SUPPLY LINE
1-11	A	3/4"
12-22	B	1"
33-60	C	1"
61-113	D	1 1/4"
114-154	E	1 1/2"
155-330	F	2"

REFERENCE PDI-WH-201.



7 WATER HAMMER ARRESTOR

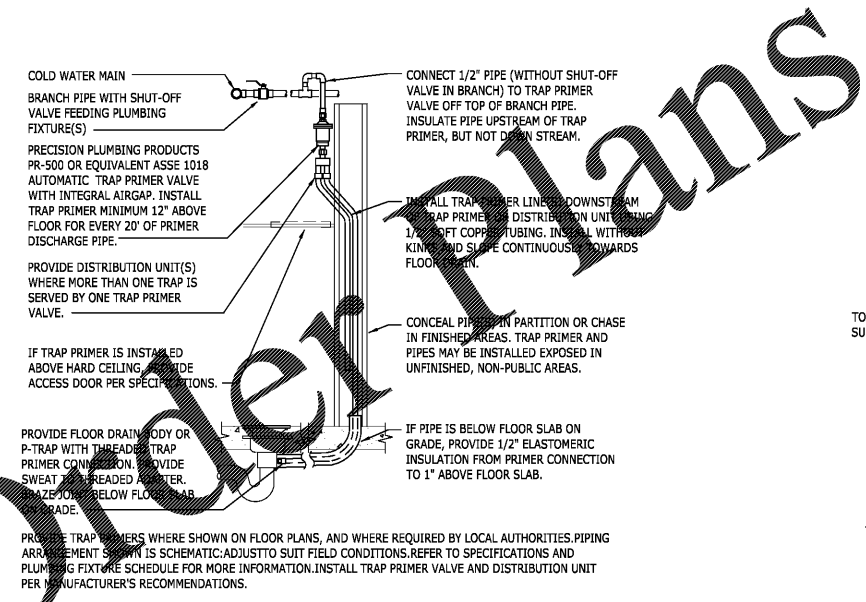
N.T.S.



- NOTES:
1. ALL COMPONENTS DRAWN IN BOLD ARE GC RESPONSIBILITY. GC TO COORDINATE INSTALLATION OF ALL OTHER COMPONENTS SHOWN WITH FILTER VENDOR.
2. ALL PIPING SHALL BE COPPER EXCEPT PEX TYPE PIPING IS ACCEPTABLE BETWEEN FILTER SYSTEM COMPONENTS WHERE ALLOWED BY CODE.
3. COORDINATE WITH ELECTRICAL CONTRACTOR FOR RECEPTACLES.
4. PROVIDE WATER SOFTENER INDIRECT DRAIN TO SINK. INSTALLED PER CODE. (CONFIRM REQUIREMENTS WITH SOFTENER EQUIPMENT CUTSHEETS IN ITEM SPECIFICATIONS).
5. PROVIDE RO INDIRECT DRAIN TO SINK INSTALLED PER CODE. (CONFIRM REQUIREMENTS WITH RO EQUIPMENT CUTSHEET IN ITEM SPECIFICATIONS).
6. IN MUNICIPALITIES WITH BRINE RESTRICTIONS, REFER TO THE WATER SYSTEM CONFIGURATIONS APPENDIX UNDER ITEM SPECIFICATIONS FOR WATER SOFTENER EXCHANGE TANK SCHEMATIC.
7. COMPONENTS ARE TO BE POSITIONED TO MAXIMIZE ACCESS FOR REGULAR SERVICING. PRE-FILTER, BYPASS VALVES, AND SOFTENER TANKS MUST BE INSTALLED 72" (1829mm) AFF OR LOWER.

8 TYPE 3 WATER TREATMENT SYSTEM

N.T.S.



6 TRAP PRIMER DETAIL

N.T.S.



STARBUCKS COFFEE COMPANY
2401 UTAH AVENUE SOUTH
SEATTLE, WASHINGTON 98134
(206) 318-1575

THESE DRAWINGS AND SPECIFICATIONS ARE CONFIDENTIAL AND SHALL REMAIN THE PROPERTY OF STARBUCKS CORPORATION, WHICH IS THE OWNER OF THE COPYRIGHT IN THIS WORK. THEY SHALL NOT BE REPRODUCED IN WHOLE OR IN PART, SHARED WITH THIRD PARTIES OR USED IN ANY MANNER ON OTHER PROJECTS OR EXTENSIONS TO THIS PROJECT WITHOUT THE PRIOR WRITTEN CONSENT OF STARBUCKS CORPORATION. THESE DRAWINGS AND SPECIFICATIONS ARE INTENDED TO EXPRESS THE DESIGN INTENT FOR A PROTOTYPICAL STARBUCKS STORE (WHICH IS SUBJECT TO CHANGE AT ANY TIME) AND DO NOT REFLECT ACTUAL SITE CONDITIONS. NEITHER PARTY SHALL HAVE ANY OBLIGATION OR LIABILITY TO THE OTHER (EXCEPT AS STATED ABOVE) UNTIL A WRITTEN AGREEMENT IS FULLY EXECUTED BY BOTH PARTIES.

Design Forum Architects Inc.
3100 W. Park Row, Suite 400
Portland, OR 97201
Tel: 503-251-2210

Design Forum Engineering
1501 S.W. 50th Way, Suite 600
Coral Gables, FL 33134
Tel: 305-441-2210

Rev	Date	Description

PROJECT NAME:
**CYPRESS GARDENS
BLVD & ROOSEVELT**

PROJECT ADDRESS:
**5709 CYPRESS GARDENS BLVD.
WINTER HAVEN, FL 33884**

STORE #: 50175
PROJECT #: 73763-001
ISSUE DATE: 05/02/2018
PROGRAM MANAGER: ROMINA VIGNOLO
LEED AP: STARBUCKS
PRODUCTION DESIGNER: MICHAEL B. SARKA
CHECKED BY: ANA COSTANZO

SHEET TITLE:
PLUMBING DETAILS

SCALE: As Indicated

SHEET:
P-5001