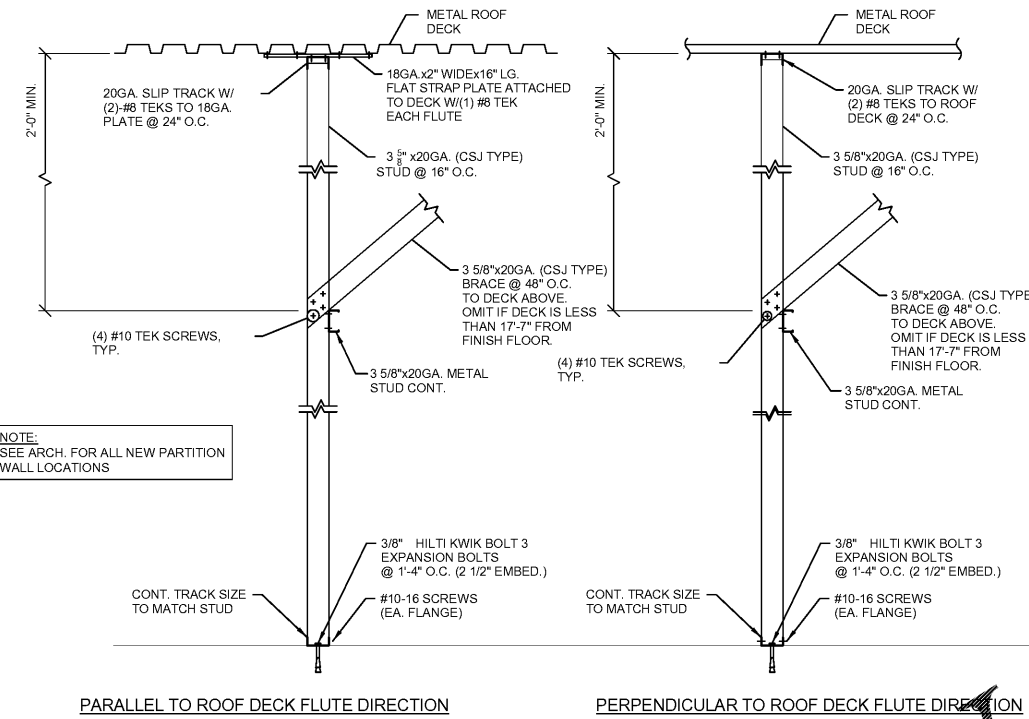


- NOTES:
- 1'-7" AFF (CW SUPPLY)
  - 1'-6" AFF (CWF SUPPLY)
  - 1'-5" AFF (HW SUPPLY)
  - VARIES: 1/4" PER FOOT FALL (ABS 2" WASTE LINE)

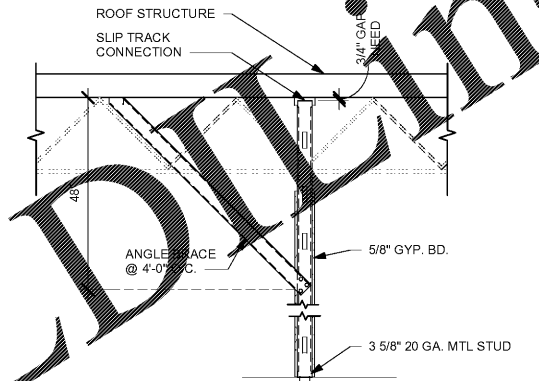
1 WALL SECTION AT BACKBAR  
Scale: 3/4" = 1'-0"



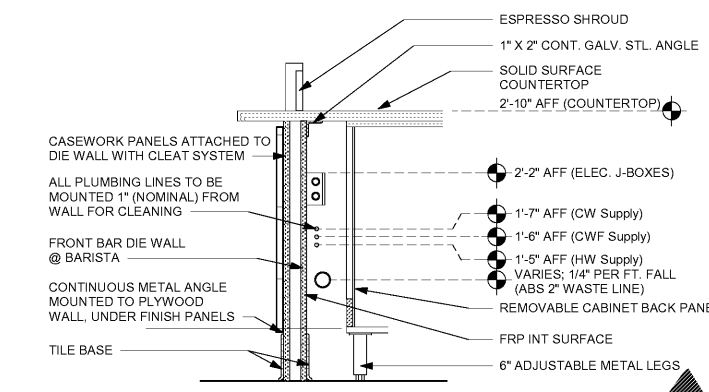
2 FULL HEIGHT PARTITION WALL ATTACHMENTS  
Scale: 3/4" = 1'-0"

PARTITION WALL SCHEDULE

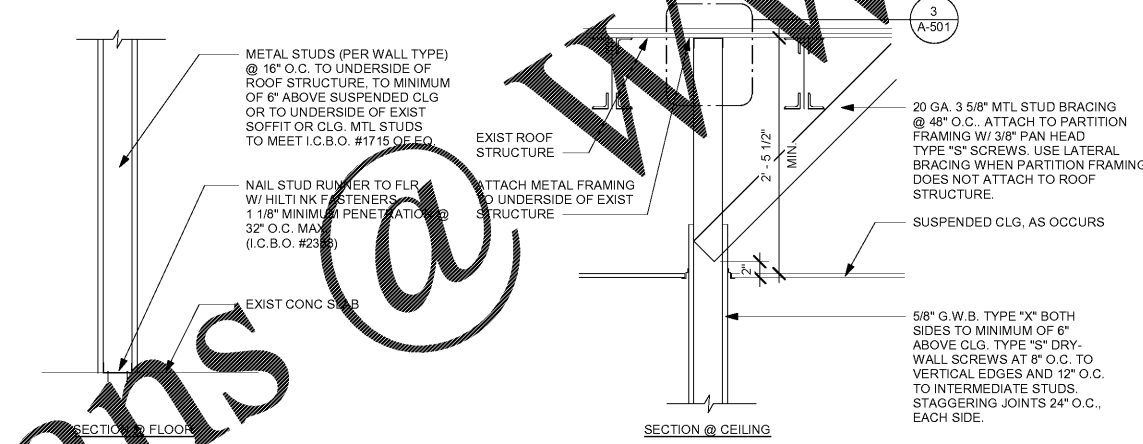
WALL HEIGHT	STUD SIZE	DEFL TRACK	DEFL TRACK SPANNING STWN (E) JOISTS	BOT TRACK	
15 FEET	362S137-33	33 ML	JST @ 4 O.C. JST @ 6 O.C.	54 MIL 68 MIL	33 MIL
20 FEET	550S162-33	33 ML	JST @ 4 O.C. JST @ 6 O.C.	68 MIL 97 MIL	33 MIL
25 FEET	600S200-43	43 ML	JST @ 4 O.C. JST @ 6 O.C.	68 MIL 97 MIL	33 MIL



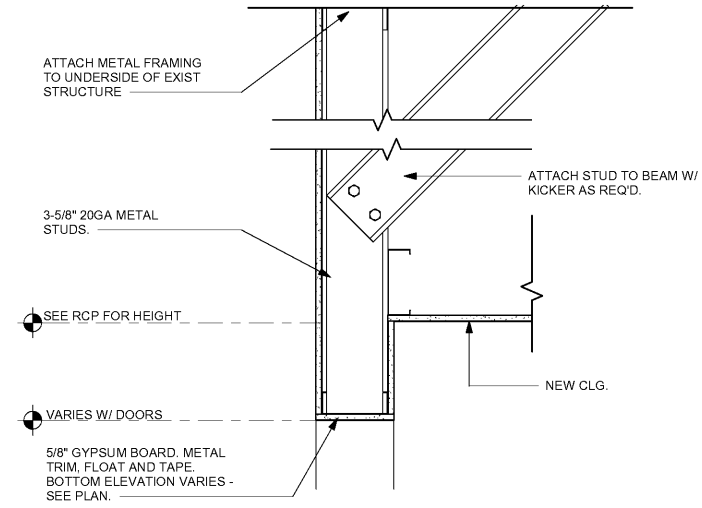
3 DETAIL AT 3 5/8" METAL STUDS TO DECK  
Scale: 1/2" = 1'-0"



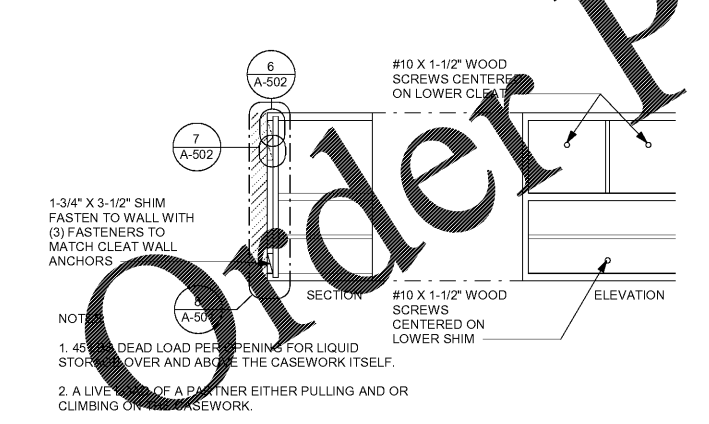
6 WALL SECTION AT DIEWALL  
Scale: 1" = 1'-0"



4 NEW PARTITION WALL TO STRUCTURE  
Scale: 1/2" = 1'-0"



5 HEADER DETAIL  
Scale: Not to Scale



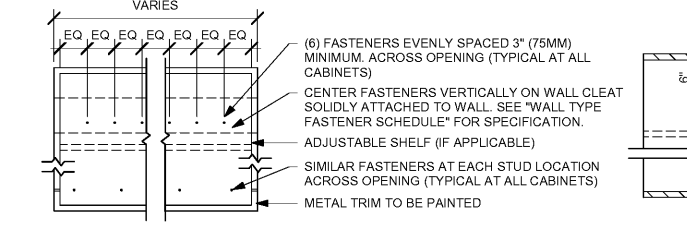
9 BLOCKING AT CASEWORK  
Scale: 1/2" = 1'-0"

WALL TYPE FASTENER SCHEDULE

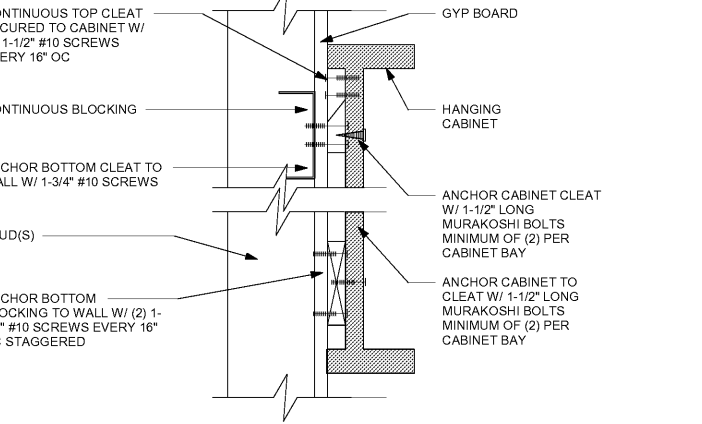
WALL TYPE	WALL BLOCKING	FASTENERS	NOTES
WOOD FRAME	X	#8 X3" (75MM) WD OR EQUIVALENT	REFER TO BLOCKING REQUIREMENTS
METAL FRAME	X	#8CT X1 1/4" (30MM) M/LWD OR EQUIVALENT	REFER TO BLOCKING REQUIREMENTS
CMU		MIN. 5/16" X3" (8MM X 75MM) TAPCON OR EQUIVALENT	SPACE PER DETAIL THIS SHEET
CONCRETE		MIN. 1/4" X3" (7MM X 75MM) SLEEVE ANCHOR OR EQUIVALENT	SPACE PER DETAIL THIS SHEET
BRICK		MIN. 1/4" X3" (7MM X 75MM) WEDGE ANCHOR OR EQUIVALENT	SPACE PER DETAIL THIS SHEET

STUD WALL BLOCKING REQUIREMENTS:  
WOOD STUD WALLS REQUIRE MIN. 2"x6" (50MM X 150MM) WOOD BLOCKING SECURED FLUSH TO STUD FACE WITH (3) 10D NAILS (OR EQUIVALENT)

METAL STUD WALLS REQUIRE MIN. 2"x6" (50MM X 150MM) WOOD BLOCKING SECURED FLUSH TO STUD FACE WITH MIN. (3) #6 CT. 1.25" (30MM) SCREWS (OR EQUIVALENT)



7 UPPER CABINET ATTACHMENT  
Scale: 1" = 1'-0"



8 ANCHOR DETAIL  
Scale: 3" = 1'-0"



STARBUCKS  
2401 UTAH AVENUE SOUTH  
SEATTLE, WASHINGTON 98134  
(206) 318-1575

THESE DRAWINGS AND SPECIFICATIONS ARE CONFIDENTIAL AND SHALL REMAIN THE SOLE PROPERTY OF STARBUCKS CORPORATION, WHICH IS THE OWNER OF THE COPYRIGHT IN THIS WORK. THEY SHALL NOT BE REPRODUCED (IN WHOLE OR IN PART), SHARED WITH THIRD PARTIES OR USED IN ANY MANNER ON OTHER PROJECTS OR EXTENSIONS TO THIS PROJECT WITHOUT THE PRIOR WRITTEN CONSENT OF STARBUCKS CORPORATION. THESE DRAWINGS AND SPECIFICATIONS ARE INTENDED TO EXPRESS DESIGN INTENT FOR A PROTOTYPICAL STARBUCKS STORE (WHICH IS SUBJECT TO CHANGE AT ANYTIME) AND DO NOT REFLECT ACTUAL SITE CONDITIONS. NEITHER PARTY SHALL HAVE ANY OBLIGATION NOR LIABILITY TO THE OTHER (EXCEPT STATED ABOVE) UNTIL A WRITTEN AGREEMENT IS FULLY EXECUTED BY BOTH PARTIES.

STARBUCKS TEMPLATE VERSION I2018.01.26

Design Forum Architects Inc.  
700 W. Pine Rose Way, Suite 460  
Cincinnati, OH 45203  
Tel: (513) 421-2210  
Donald J. Rehrman  
Architect in Charge  
License: AR0017303

Design Forum Engineering  
700 W. Pine Rose Way, Suite 460  
Cincinnati, OH 45203  
Tel: (513) 421-2210  
Timothy L. Raderberg, PE  
Professional Engineer  
License: 62078

PROJECT NAME:  
CYPRESS GARDENS  
BLVD & ROOSEVELT

PROJECT ADDRESS:  
5709 CYPRESS GARDENS BLVD  
WINTER HAVEN, FL 33884

STORE #: 50175  
PROJECT #: 73763-001  
ISSUE DATE: 04/20/2018  
DESIGN PROGRAM MANAGER: LAIS BRITO  
LEEDO AP: STARBUCKS  
PRODUCTION DESIGNER: MICHAEL B. SARKA  
CHECKED BY: ANA COSTANZO

Revision Schedule

Rev	Date	By	Description

SHEET TITLE:  
CONSTRUCTION DETAILS  
SCALE: AS SHOWN

SHEET NUMBER:  
A-501