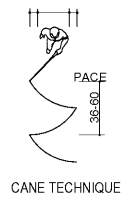
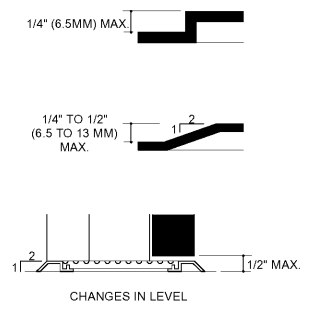


CANE TECHNIQUE

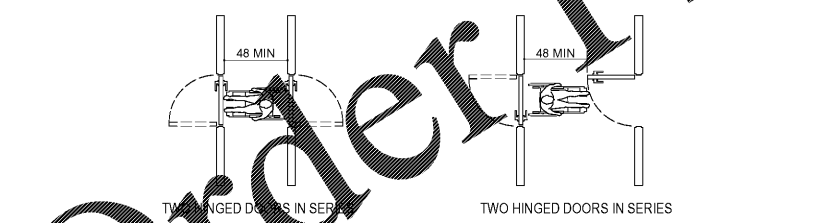
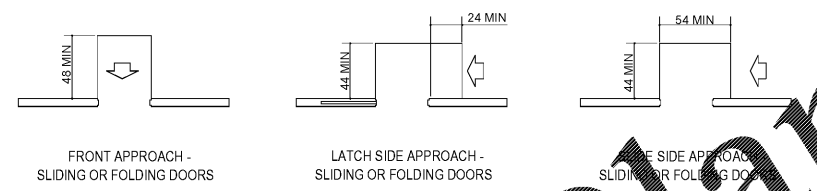
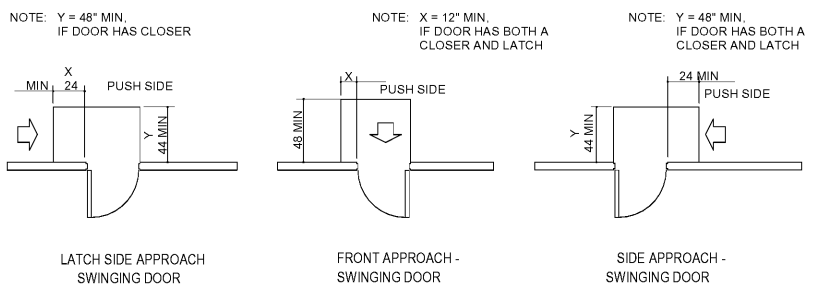
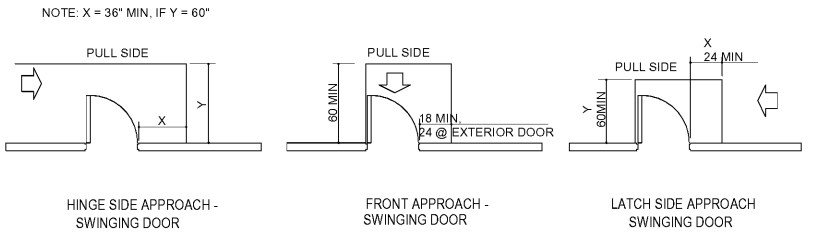


CANE TECHNIQUE

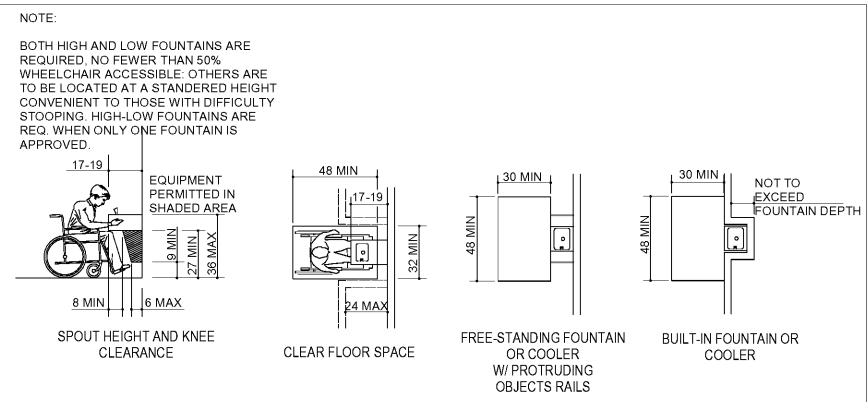


CHANGES IN LEVEL

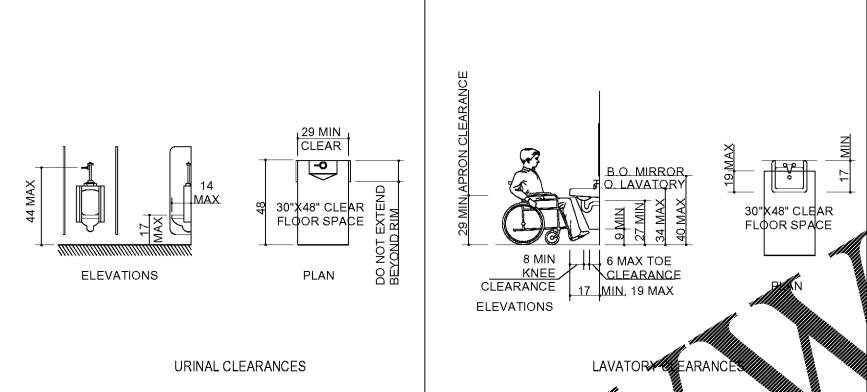
21 SECTION 4.3 ACCESSIBLE ROUTE
SCALE: NTS



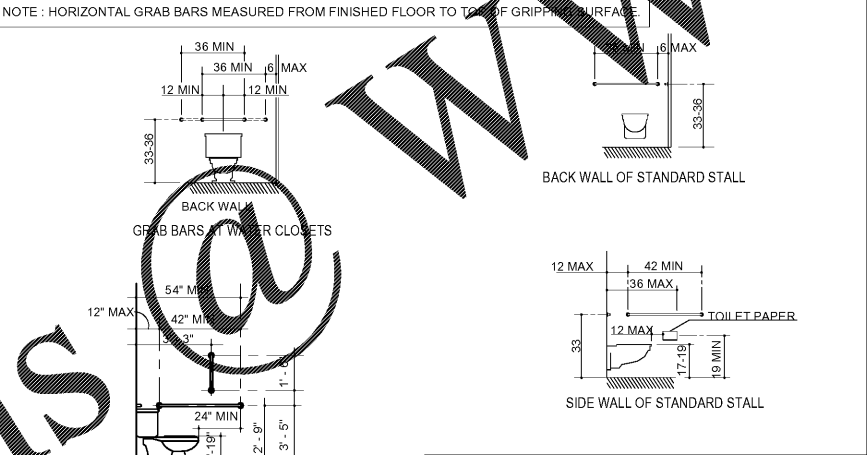
24 SECTION 4.13 DOORS
SCALE: NTS



13 SECTION 4.15 DRINKING FOUNTAINS
SCALE: NTS

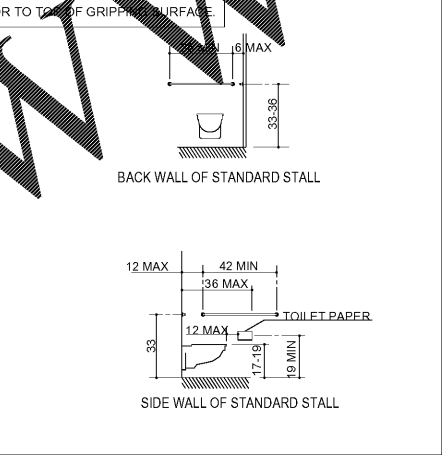


14 SECTION 4.18 URINALS
SCALE: NTS

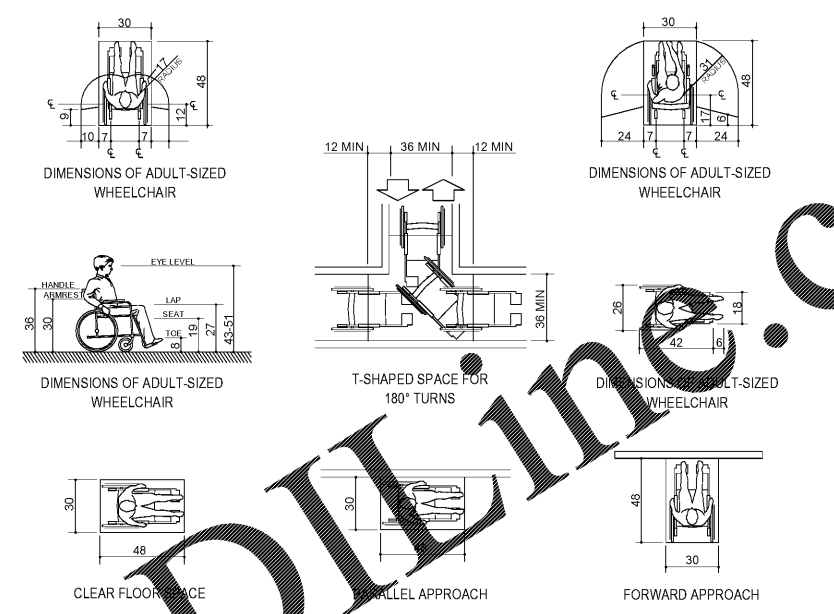
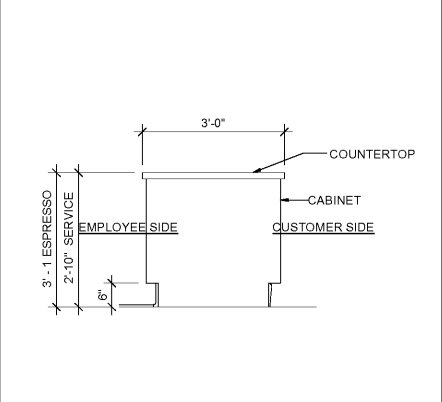


16 SECTION 4.17 TOILET STALLS
SCALE: NTS

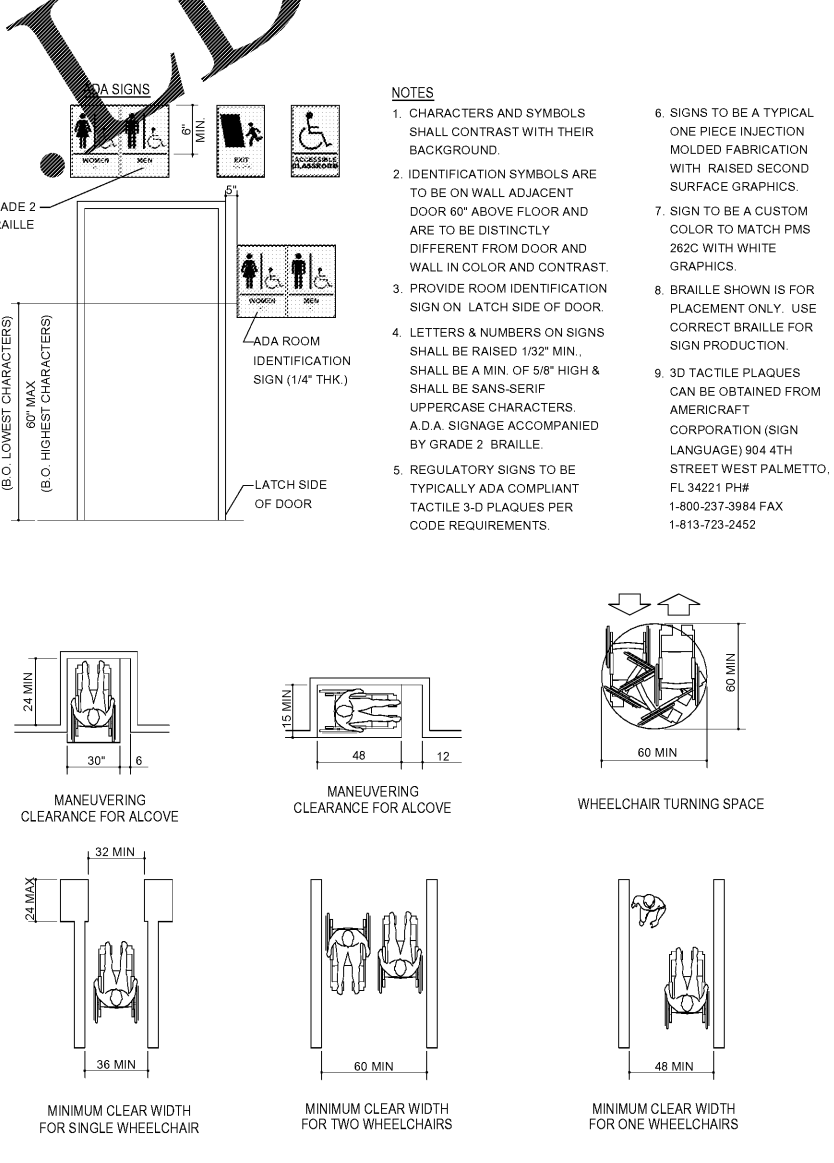
10 SEC. 4.19 LAVATORIES & MIRRORS
SCALE: NTS



12 TYP SECTION @ COUNTER
SCALE: NTS



8 SECTION 4.2 SPACE ALLOWANCES
SCALE: NTS



- NOTES**
- CHARACTERS AND SYMBOLS SHALL CONTRAST WITH THEIR BACKGROUND.
 - IDENTIFICATION SYMBOLS ARE TO BE ON WALL ADJACENT DOOR 60" ABOVE FLOOR AND ARE TO BE DISTINCTLY DIFFERENT FROM DOOR AND WALL IN COLOR AND CONTRAST.
 - PROVIDE ROOM IDENTIFICATION SIGN ON LATCH SIDE OF DOOR.
 - LETTERS & NUMBERS ON SIGNS SHALL BE RAISED 1/32" MIN. SHALL BE A MIN. OF 5/8" HIGH & SHALL BE SANS-SERIF UPPERCASE CHARACTERS. A.D.A. SIGNAGE ACCOMPANIED BY GRADE 2 BRAILLE.
 - REGULATORY SIGNS TO BE TYPICALLY ADA COMPLIANT TACTILE 3-D PLAQUES PER CODE REQUIREMENTS.
 - SIGNS TO BE A TYPICAL ONE PIECE INJECTION MOLDED FABRICATION WITH RAISED SECOND SURFACE GRAPHICS.
 - SIGN TO BE A CUSTOM COLOR TO MATCH PMS 262C WITH WHITE GRAPHICS.
 - BRAILLE SHOWN IS FOR PLACEMENT ONLY. USE CORRECT BRAILLE FOR SIGN PRODUCTION.
 - 3D TACTILE PLAQUES CAN BE OBTAINED FROM AMERICRAFT CORPORATION (SIGN LANGUAGE) 904 4TH STREET WEST PALMETTO, FL 34221 PH# 1-800-237-3984 FAX 1-813-723-2452



STARBUCKS COFFEE COMPANY
2401 UTAH AVENUE SOUTH
SEATTLE, WASHINGTON 98134
(206) 318-1575

THESE DRAWINGS AND SPECIFICATIONS ARE CONFIDENTIAL AND SHALL REMAIN THE SOLE PROPERTY OF STARBUCKS CORPORATION, WHICH IS THE OWNER OF THE COPYRIGHT IN THIS WORK. THEY SHALL NOT BE REPRODUCED (IN WHOLE OR IN PART), SHARED WITH THIRD PARTIES OR USED IN ANY MANNER ON OTHER PROJECTS OR EXTENSIONS TO THIS PROJECT WITHOUT THE PRIOR WRITTEN CONSENT OF STARBUCKS CORPORATION. THESE DRAWINGS AND SPECIFICATIONS ARE INTENDED TO EXPRESS DESIGN INTENT FOR A PROTOTYPICAL STARBUCKS STORE (WHICH IS SUBJECT TO CHANGE AT ANYTIME) AND DO NOT REFLECT ACTUAL SITE CONDITIONS. NEITHER PARTY SHALL HAVE ANY OBLIGATION NOR LIABILITY TO THE OTHER (EXCEPT STATED ABOVE) UNTIL A WRITTEN AGREEMENT IS FULLY EXECUTED BY BOTH PARTIES.

STARBUCKS TEMPLATE VERSION: 2017.11.03

Design Forum Architects Inc.
700 W. Pete Rose Way, Suite 490
Cincinnati, OH 45203
Tel: (513) 421-2219
Donald J. Rethman
Architect in Charge
License: AR0017933

PROJECT NAME:
**CYPRESS GARDENS
BLVD & ROOSEVELT**

PROJECT ADDRESS:
**5709 CYPRESS GARDENS BLVD
WINTER HAVEN, FL 33884**

STORE #: 50175
PROJECT #: 73763-001
ISSUE DATE: 04/20/2018
DESIGN PROGRAM MANAGER: LAIS BRITO
LEAD OAP: STARBUCKS
PRODUCTION DESIGNER: MICHAEL B. SARKA
CHECKED BY: ANA COSTANZO

Revision Schedule			
Rev	Date	By	Description

SHEET TITLE:
**ACCESSIBILITY
GUIDELINES**
SCALE: 1/2" = 1'-0"

SHEET NUMBER:
G-003

Order Plans @ WWW.LDOnline.com