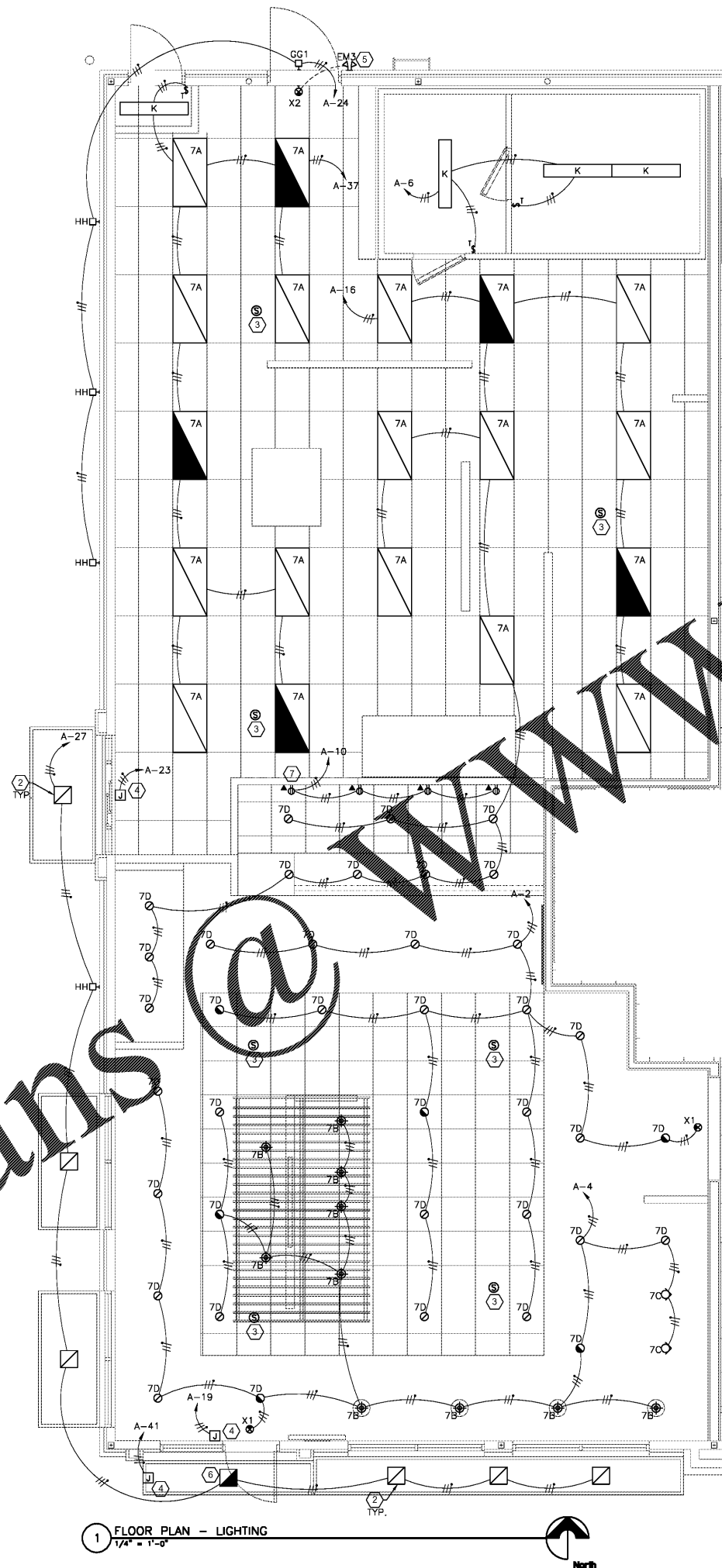


Order Plans



**ELECTRICAL GENERAL NOTES**

- EMERGENCY BATTERY LIGHTING UNITS AND EXIT SIGNS SHALL BE CONNECTED TO THE UN-SWITCHED HOT LEG OF THE BRANCH CIRCUIT.
- FIXTURES SHOWN HATCHED ARE THE 'E' TYPE OF THE FIXTURE AND HAVE AN EMERGENCY BATTERY. CONNECT TO AN UNSWITCHED HOT CONDUCTOR.

**ELECTRICAL KEYED NOTES:**

- ROUTE THROUGH LIGHTING CONTACTOR/TIMECLOCK
- FIXTURES PROVIDED BY AWNING SUPPLIER. E.C. TO MAKE FINAL CONNECTIONS.
- SPEAKERS BY OWNER.
- J-BOX ABOVE CEILING FOR CONNECTION TO SIGNS. REFER TO ARCHITECTURAL ELEVATIONS FOR EXACT LOCATION.
- AIM EMERGENCY FIXTURE HEADS TOWARDS EXIT/CHARGE AREA.
- SUPPLY THIS FIXTURE THROUGH EMERGENCY BATTERY CENTER IN GRID CEILING.
- DIGITAL MENU BOARDS: PROVIDE A DUPLEX RECEPTACLE AND P-RING FOR DATA CABLE AT ELEMENTARY CONTROL PANEL. LOCATE OUTLETS BEHIND SCREENS AND VERIFY HEIGHTS WITH BUILDING EQUIPMENT SUPPLIER.

**LIGHTING LEGEND**

SYMBOL	DENOTES
	RECESSED FLUORESCENT LIGHT FIXTURE - LENSED
	RECESSED FLUORESCENT LIGHT FIXTURE - BASKET
	RECESSED FLUORESCENT LIGHT FIXTURE - PARABOLIC
	RECESSED FLUORESCENT LIGHT FIXTURE - OTHER
	RECESSED FLUORESCENT LIGHT FIXTURE ON EMERGENCY
	WALL BRACKET LIGHT FIXTURE
	STRIP FIXTURE
	WALL MOUNT FIXTURE - INCANDESCENT OR FLUOR.
	WALL MOUNT FIXTURE - HID
	RECESSED DOWNLIGHT
	EXIT SIGN - ARROWS INDICATE DIRECTION
	EMERGENCY LIGHT FIXTURE
	SINGLE POLE SWITCH
	DOUBLE POLE SINGLE THROW SWITCH
	THREE WAY SWITCH
	FOUR WAY SWITCH
	KEYED SWITCH
	PILOT LIGHT SWITCH

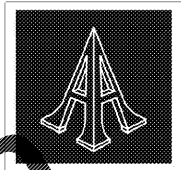
**LIGHTING CONTROL SCHEDULE**

ID	DEVICE	REMARKS
\$ <sub>T</sub>	HBA DIGITAL TIMER SWITCH - TD200	SET FOR 30 MINUTES
OS 1	PIR WALL SWITCH OCC. SENSOR	SET TO MANUAL ON / AUTO OFF

**LIGHTING FIXTURE SCHEDULE (FIXTURES BY OWNER)**

ID	MANUF.	MODEL #	VOLT	LAMPS		MOUNT.	REMARKS
				#	TYPE		
7A	COLUMBIA	LIT24 40MLG FSA12 EU	120	--	LED (41W)	RECESSED	
7AE	METALUX	LIT24 40MLG FSA12 EU ELL14	120	--	LED (41W)	RECESSED	EMERGENCY BATTERY
K	LSI	S 4 LED HO CW UE	120	--	LED (44W)	SURFACE	
7B	BESA	1JT 4124RM SN LAMP (CIERRO TYPE P4 RUBY MATTE)	120	1	13W/DTT/GU-24	PENDANT	MOUNT BOTTOM OF FIXTURE @ 6'-6" AFF. SEE NOTE 2
7C	SECURITY LTG.	SLSDBXQL LB6LEDA30K WW WH	120	1	LED (14W)	RECESSED	WALL WASHER.
7D	SECURITY LTG.	SLSDBXQL LB6LEDA30K WH	120	1	LED (14W)	RECESSED	
7DE	SECURITY LTG.	SLSDBXQL LB6LEDA30K WH	120	1	LED (14W)	RECESSED	CONNECT TO EXTERNAL EMERGENCY BATTERY
GG1	US LED	DSC01 1 UNV 50 1 00	120	--	LED (34W)	WALL	MOUNT CENTER OF FIXTURE @ 9'-0" AFF
HH	SECURITY LTG.	RWS 50LED UD SA	120	--	LED (50W)	WALL	SEE ARCH. ELEVATIONS FOR MOUNTING HEIGHT
X1	LITHONIA	LQM S W 3 R 120/277 EL N M6	120	--	INCLUDED	UNIVERSAL	
X2	LITHONIA	LHQM S W 3 R H0 R0 M6	120	--	INCLUDED	UNIVERSAL	
EM3	LITHONIA	ELA LED T WP M12	120	--	INCLUDED	WALL OR CLG.	

- LIGHT FIXTURE NOTES:**  
 1. NOT USED  
 2. VERIFY THAT BOTTOM OF LIGHT FIXTURE IS 30"-33" ABOVE TABLE.



Pascal Aughtry & Associates, PC  
 405.463.3434  
 Fax: 405.463.3493  
 937 East Brifton Road  
 Oklahoma City, OK 73114  
 pasca@arch.com



A NEW TRAVEL STOP  
 STORE NO. 735  
 CALHOUN, GA



Revisions:

No.	Date

Project No.: LVS - 18735  
 Date: 05-22-18  
 Sheet No.:

**BE-2.1**

OF: