

PROJECT SCHEDULE					
NAME	LOCATION	OUTSIDE AIR HEATING SEASON DBWB (°F)	COOLING SEASON DB/MCWB (°F)	ALTITUDE (FT)	NOTES
LOVE'S TRAVEL STOP	CALHOUN, GA	17 / 15	96 / 75	643	

AIR CURTAIN SCHEDULE							
TAG	MANUFACTURER	MODEL	SERVES	AIRFLOW	ELEC	ACCESS	NOTES
AD-01	BERNER	SHD07-1048A	KITCHEN ENTRANCE	1,882 CFM	MCA: 7.5 MOCP: 15 3/4 HP	1-4	1-2

ACCESSORIES:
1. NO HEATER
2. DOOR SWITCH WITH DELAY TIMER
3. STANDARD FINISH
4. 120V/1Ø/60Hz
5. WITH SWEEPER

NOTES:
1. SET DELAY TIMER TO 30 SECONDS
2. ELECTRICAL CONTRACTOR SHALL PROVIDE DISCONNECT SWITCH

AIR BALANCE SCHEDULE						
MARK	DINING (CFM)			STORAGE/PREP (CFM)		
	S/A	O/A	E/A	S/A	O/A	E/A
BK RTU-1	3366	1050	-	-	-	-
BK RTU-2	-	-	-	5003	1130	-
KF-1	-	-	-	-	-	915
KF-2	-	-	-	-	-	1350
TOTAL	3366	1050	200	5003	1130	2265

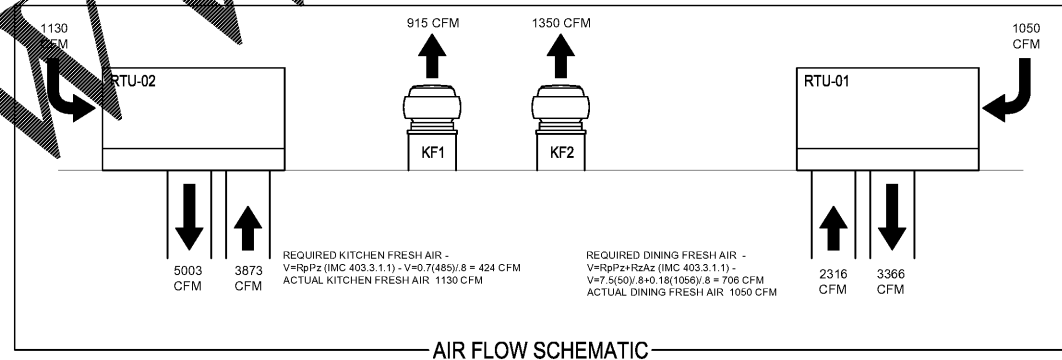
DINING PRESSURIZATION (O/A) - (E/A) = +1050 CFM KITCHEN PRESSURIZATION (O/A) - (E/A) = -135 CFM
NET BUILDING PRESSURIZATION (DINING + KITCHEN) = -85 CFM

PACKAGE ROOF TOP UNIT SCHEDULE																	
ID	MANUFACTURER AND MODEL NUMBER	LOCATION	TYPE	AIR				FAN		COOLING DATA		ELECTRIC HEAT		ELECTRICAL		PHYSICAL	
				SUPPLY AIRFLOW RATE (CFM)	OUTDOOR AIRFLOW RATE (CFM)	EXTERNAL STATIC PRESSURE DROP (IN. H2O)	EVAP. FAN MOTOR SIZE (MHP)	TOTAL LOAD (BTU/H)	SENSIBLE LOAD (BTU/H)	ENTERING/ LEAVING COIL TEMP. DBWB (°F)	ENTERING/ LEAVING TEMP. (°F)	HEATING OUTPUT STAGE 2/1 (KW)	ELECTRIC INPUT (KW)	MINIMUM CIRCUIT AMPS (MCA)	VOLT/PH	WEIGHT (LBS)	NOTES
SW RTU-1	LENNOX LCH120H4M	ROOF	DOWNFLOW	3,366	1,050	0.50	2.0	102,700	69,030	79/67 57/56	55 / 87	45 / 30	45	127	208/3	1410	1-9
SW RTU-2	LENNOX LCH156H4M	ROOF	DOWNFLOW	5,003	1,130	0.50	2.0	140,1668	103,752	77/64 57/56	59 / 87	60 / 45	60	135	208/3	2338	1-9

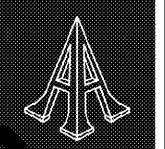
- AIR FILTERS SHALL BE 2-INCH THICK MERV 8 EFFICIENCY IN ACCORDANCE WITH ASHRAE 52.2 TEST METHOD & WITH CLOGGED FILTER SWITCH.
- PROVIDE WITH INTEGRAL SMOKE DETECTOR IN THE RETURN AIR SIDE OF UNIT; INTERCONNECT TO REMOTE VISUAL & AUDIBLE ALARM FIELD WIRING.
- PROVIDE WITH FACTORY INSTALLED DISCONNECT AND GFCI OUTLET FACTORY INSTALLED FIELD WIRING.
- PROVIDE WITH HOT-GAS REHEAT CONTROLLED BY FIELD INSTALLED WALL SENSOR.
- PROVIDE WITH WALL MOUNT TEMPERATURE & HUMIDITY SENSORS.
- PROVIDE WITH 24-INCH TALL ROOF CURB.
- PROVIDE WITH HAIL GUARD AND FRESH AIR TEMPERING OPTION.
- PROVIDE WITH DIFFERENTIAL ENTHALPY CONTROL ECONOMIZER & BAROMETRIC RELIEF.
- ALL RTU(S) PROVIDED BY OWNER FOR INSTALLATION BY MECHANICAL CONTRACTOR.

AIR DEVICE SCHEDULE														
ID	MANUFACTURER	MODEL NUMBER	SERVICE	NECK SIZE (IN)	MODULE SIZE	MAXIMUM AIRFLOW RATE (CFM)	STATIC PRESSURE DROP (IN. H2O)	THROW @ 50 FPM (FT)	MAXIMUM NC RATING	PATTERN	THROW DIRECTION	MATERIAL	BORDER	NOTES
A	NAILOR	UNI	SUPPLY	6"Ø	24x24	100	0.02	4.0	<20	4-WAY	HORIZONTAL	STEEL	LAY-IN	1-5
B	NAILOR	UNI	SUPPLY	8"Ø	24x24	245	0.06	8.0	<10	4-WAY	HORIZONTAL	STEEL	LAY-IN	1-5
B2	NAILOR	AUNI-DFA	SUPPLY	8"Ø	24x24	245	0.06	8.0	<10	4-WAY	HORIZONTAL	ALUMINUM	SURFACE	1-5
C	NAILOR	UNI	SUPPLY	10"Ø	24x24	382	0.09	12.0	18	4-WAY	HORIZONTAL	STEEL	LAY-IN	1-5
C2	NAILOR	AUNI-DFA	SUPPLY	10"Ø	24x24	382	0.09	12.0	18	4-WAY	HORIZONTAL	ALUMINUM	SURFACE	1-5
D	NAILOR	4320CBA	SUPPLY	8"Ø	16x16	210	0.06	10.0	21	4-WAY	HORIZONTAL	ALUMINUM	SURFACE	1-5
E	NAILOR	4320CBA	SUPPLY	10"Ø	24x24	325	0.07	13.0	23	4-WAY	HORIZONTAL	ALUMINUM	LAY-IN	1-5
F	NAILOR	507S-C	SUPPLY	10"Ø	48x3	300	0.10	12.0	18	2-WAY	HORIZONTAL	ALUMINUM	SURFACE	1-5
G	NAILOR	5145H	RETURN	22x10	24x12	548	0.05	-	17	-	-	ALUMINUM	LAY-IN	1-5
H	NAILOR	5145H	RETURN	22x22	24x24	1268	0.05	-	-	-	-	ALUMINUM	LAY-IN	1-5
J	NAILOR	49-280	RETURN	22/6	24x8	265Ft	0.08	-	-	-	-	ALUMINUM	SURFACE	1-5
K	NAILOR	5145H-OA	EXHAUST	10x10	12x12	305	0.09	-	-	-	-	ALUMINUM	SURFACE	1-5
L	NAILOR	51PR-AW	SUPPLY	14"Ø	24x48	600	0.09	-	26	PERFORATED DUMP	VERTICAL	STEEL	LAY-IN	1-6
M	NAILOR	ST-HC	SUPPLY	10"Ø	24x24	450	0.09	13	27	4-WAY	HORIZONTAL	ALUMINUM	LAY-IN	1-5
N	NAILOR	5130H-HD	EXHAUST	10x10	12x12	200	-	-	-	-	-	ALUMINUM	SURFACE	1-5
P	NAILOR	51PR-AW	SUPPLY	22x22	24x24	400	-	-	10	PERFORATED DUMP	VERTICAL	ALUMINUM	DUCT	1-5
Q	AIR CONCEPTS	SDR	SUPPLY	10"Ø	15"Ø	273	0.11	10.0	27	RADIAL	HORIZONTAL	ALUMINUM	DUCT	1-5
R	AIR CONCEPTS	SDR	SUPPLY	12"Ø	17"Ø	393	0.11	12.0	27	RADIAL	HORIZONTAL	ALUMINUM	DUCT	1-5
S	AIR CONCEPTS	SDR	SUPPLY	14"Ø	20"Ø	428	0.08	12.0	22	RADIAL	HORIZONTAL	ALUMINUM	DUCT	1-5
T	NAILOR	51FH	RETURN	48x22	48x22	1614	0.11	-	29	-	-	ALUMINUM	SURFACE	1-5
U	NAILOR	5145HC	RETURN	12x4	14x6	190	0.11	-	20	-	-	ALUMINUM	SURFACE	1-5

- BORDER TYPES SHALL BE COMPATIBLE WITH ARCHITECTURAL CEILING TYPE FOR THE ROOM IN WHICH THE AIR DEVICE IS LOCATED.
- SEE HVAC PLANS FOR LOCATION AND AIR QUANTITIES OF EACH AIR DEVICE.
- ALL AIR DEVICES SHALL BE TESTED IN ACCORDANCE WITH ASHRAE STANDARD 70.
- NC VALUES ARE BASED UPON A 10 dB ROOM ATTENUATION.
- OWNER PROVIDED AND CONTRACTOR INSTALLED.
- PROVIDE FIELD BUILT PLENUM 46x22x27 HIGH PLENUM HAVING 14"Ø SUPPLY.



Order Plans @ WWW.LDMLINE.COM



Pascal Aughtry & Associates, PC
405.463.3494
Fax: 405.463.3493
937 East Britton Road
Oklahoma City, OK 73114
pascalarch.com



A NEW TRAVEL STOP
STORE NO. 735
CALHOUN, GA



Revisions:	
No.	Date

Project No.: LVS - 18735
Date: 05-22-18
Sheet No.:
BKM4.1
OF: