

Pascal Aughtry & Associates, PC

405.463.3494
Fax: 405.463.3493

937 East Brison Road
Oklahoma City, OK 73114
pascalarch.com



May 22 2018 3:11 PM DocuSign

A NEW TRAVEL STOP
STORE NO. 735
CALHOUN, GA

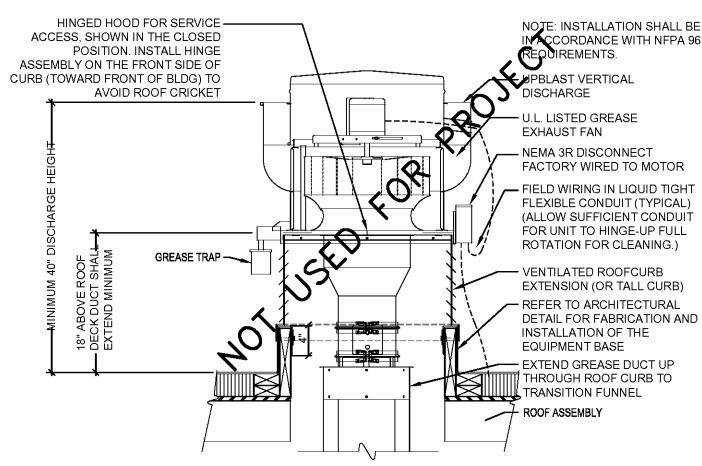


Revisions:	
No.	Date

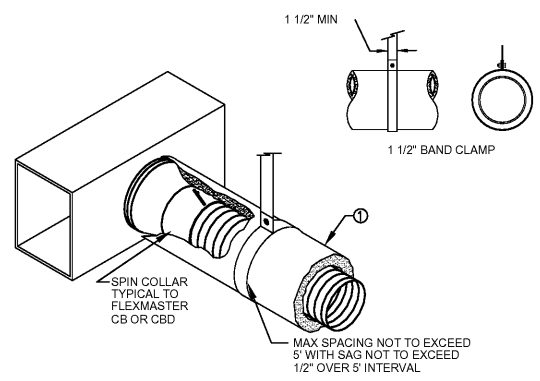
Project No.: LVS - 18735
Date: 05-22-18
Sheet No.:

SWM3.1

OF:



1 UPBLAST TYPE CENTRIFUGAL GREASE EXHAUST FAN DETAIL
SCALE: NONE



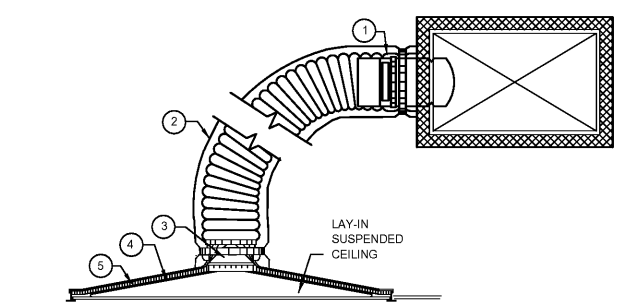
GAUGE	THK.	1" STRAP CAPABILITY	MAXIMUM LOAD
24	.028	840	168
22	.034	1070	216
20	.040	1298	259

* ELASTIC LIMIT ASSUMED 30ksi; RECOMMEND MAX LOAD (20% OF YIELD STRENGTH)

NOTES:

1. FLEX DUCT WITH EXTERNAL INSULATION AND VAPOR BARRIER JACKETING TYPICAL TO "FABRIFLEX"
2. ALL FLEX DUCT SHALL CONFORM TO UL STANDARD 181 WITH THE UL LABEL PRINTED ON THE DUCT EVERY 10 FEET.

2 SUGGESTED SUPPORT REQUIREMENTS FOR FLEX DUCT
SCALE: NONE



NOTES:

1. SPIN COLLAR TYPE CONNECTOR, EXTERNALLY INSULATED, WITH VOLUME DAMPER AND DAMPER LOCK
2. PRE-INSULATED FLEX DUCT AS REQUIRED. INSTALLED, PERMANENTLY SEALED AND SUPPORTED TO PREVENT KINKING AND SHARP TURNS
3. ROUND TO SQUARE ADAPTER AS REQUIRED
4. LAY-IN TYPE CEILING DIFFUSER WITHOUT VOLUME DAMPER
5. PROVIDE 1-1/2" THICK INSULATION; FOIL BACKED MINERAL WOOL JACKET TO COMPLETELY COVER DIFFUSER CONE SEAL FOIL TO GYPSUM WITH FIBER REINFORCED FOIL BACKED TAPE.
6. 1-90° TURN ALLOWED
7. MAXIMUM FLEX LENGTH NOT TO EXCEED 10'-0"

3 TYPICAL FLEXIBLE DUCT DETAIL
SCALE: NONE

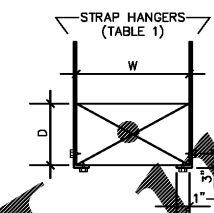


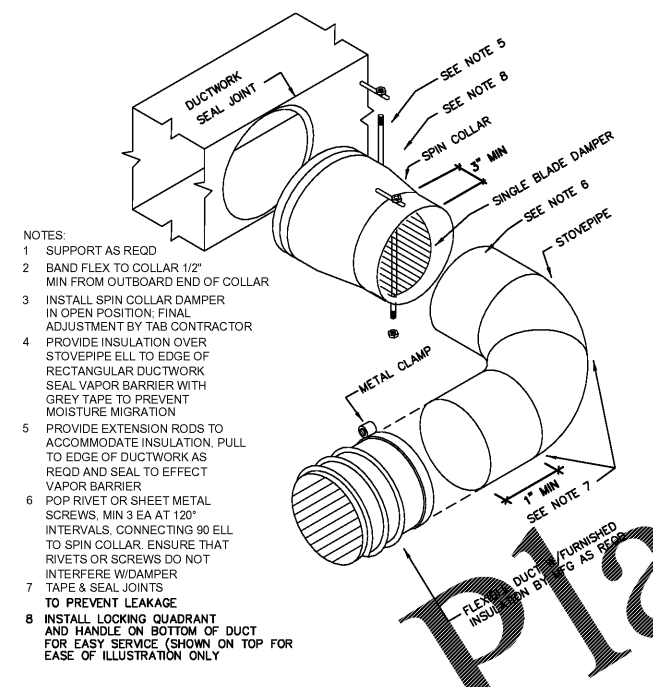
TABLE 1 STRAP HANGERS (PAIR) REQUIRED			
W+D MAX.	10' - 0" MAX.	8' - 0" MAX.	5' - 0" MAX.
72"	1" X 22 GA.	1" X 22 GA.	1" X 22 GA.
78"	1" X 20 GA.	1" X 22 GA.	1" X 22 GA.
120"	1" X 18 GA.	1" X 22 GA.	1" X 22 GA.
192"	1" X 18 GA.	1" X 22 GA.	1" X 18 GA.
192"	1" X 18 GA.	1" X 22 GA.	1" X 16 GA.

193" SPECIAL ANALYSIS REQUIRED

NOTES:

1. TABULATED DATA FROM SMACNA ALLOWS FOR DUCT REINFORCING AND INSULATION, BUT NO EXTERNAL LOAD.
2. PROVIDE HIGH DENSITY INSERT AT TRAPEZE FOR INSULATED DUCTS.

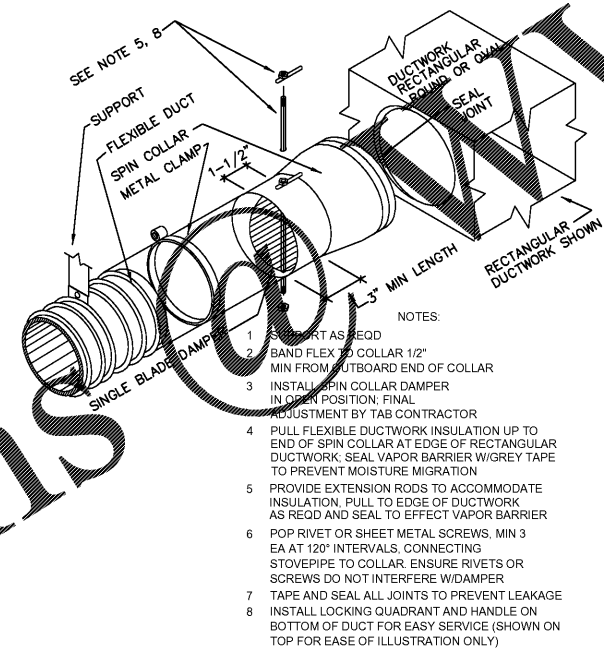
4 DUCT STRAP HANGER DETAIL
SCALE: NONE



NOTES:

1. SUPPORT AS REQD
2. BAND FLEX TO COLLAR 1/2" MIN FROM OUTBOARD END OF COLLAR
3. INSTALL SPIN COLLAR DAMPER IN OPEN POSITION; FINAL ADJUSTMENT BY TAB CONTRACTOR
4. PROVIDE INSULATION OVER STOVEPIPE ELL TO EDGE OF RECTANGULAR DUCTWORK SEAL VAPOR BARRIER WITH GREY TAPE TO PREVENT MOISTURE MIGRATION
5. PROVIDE EXTENSION RODS TO ACCOMMODATE INSULATION; PULL TO EDGE OF DUCTWORK AS REQD AND SEAL TO EFFECT VAPOR BARRIER
6. POP RIVET OR SHEET METAL SCREWS, MIN 3 EA AT 120" INTERVALS, CONNECTING 90 ELL TO SPIN COLLAR. ENSURE THAT RIVETS OR SCREWS DO NOT INTERFERE W/DAMPER
7. TAPE & SEAL JOINTS TO PREVENT LEAKAGE
8. INSTALL LOCKING QUADRANT AND HANDLE ON BOTTOM OF DUCT FOR EASY SERVICE (SHOWN ON TOP FOR EASE OF ILLUSTRATION ONLY)

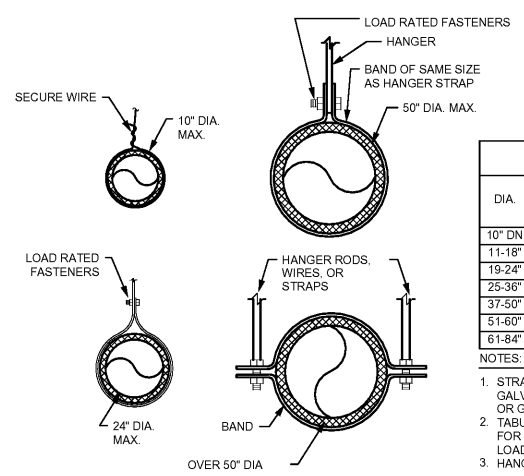
5 SPIN COLLAR FLEXIBLE DUCT CONNECTOR WITH DAMPER AND STOVEPIPE ELBOW
SCALE: NONE



NOTES:

1. SUPPORT AS REQD
2. BAND FLEX TO COLLAR 1/2" MIN FROM OUTBOARD END OF COLLAR
3. INSTALL SPIN COLLAR DAMPER IN OPEN POSITION; FINAL ADJUSTMENT BY TAB CONTRACTOR
4. PULL FLEXIBLE DUCTWORK INSULATION UP TO END OF SPIN COLLAR AT EDGE OF RECTANGULAR DUCTWORK; SEAL VAPOR BARRIER W/GREY TAPE TO PREVENT MOISTURE MIGRATION
5. PROVIDE EXTENSION RODS TO ACCOMMODATE INSULATION; PULL TO EDGE OF DUCTWORK AS REQD AND SEAL TO EFFECT VAPOR BARRIER
6. POP RIVET OR SHEET METAL SCREWS, MIN 3 EA AT 120" INTERVALS, CONNECTING STOVEPIPE TO COLLAR. ENSURE RIVETS OR SCREWS DO NOT INTERFERE W/DAMPER
7. TAPE AND SEAL ALL JOINTS TO PREVENT LEAKAGE
8. INSTALL LOCKING QUADRANT AND HANDLE ON BOTTOM OF DUCT FOR EASY SERVICE (SHOWN ON TOP FOR EASE OF ILLUSTRATION ONLY)

6 SPIN COLLAR FLEXIBLE DUCT CONNECTOR WITH DAMPER
SCALE: NONE



MINIMUM HANGER SIZES FOR ROUND DUCT				
DIA.	MAX. SPACING	WIRE DIAMETER	ROD	STRAP
10" DN	12'	(1) 12 GA.	1/4"	1"x22 GA.
11-18"	12'	(2) 12 GA. OR (1) 8 GA.	1/4"	1"x22 GA.
19-24"	12'	(2) 10 GA.	1/4"	1"x22 GA.
25-36"	12'	(2) 8 GA.	3/8"	1"x20 GA.
37-50"	12'	---	(2) 3/8"	(2) 1"x20 GA.
51-60"	12'	---	(2) 3/8"	(2) 1"x18 GA.
61-84"	12'	---	(2) 3/8"	(2) 1"x16 GA.

NOTES:

1. STRAPS ARE GALVANIZED STEEL; RODS ARE UNCOATED OR GALVANIZED STEEL; WIRE IS BLACK ANNEALED, BRIGHT BASIC OR GALVANIZED STEEL; ALL ARE ALTERNATIVES.
2. TABULATED DATA FROM 1985 SMACNA STANDARDS ALLOWS FOR DUCT REINFORCING AND INSULATION, BUT NO EXTERNAL LOAD.
3. HANGERS MUST NOT DEFORM DUCT SHAPE.

7 ROUND DUCT HANGER SPACING
SCALE: NONE

Order Plans