

Order Plans @

WWW.ONLINE.COM

MECHANICAL GENERAL NOTES:

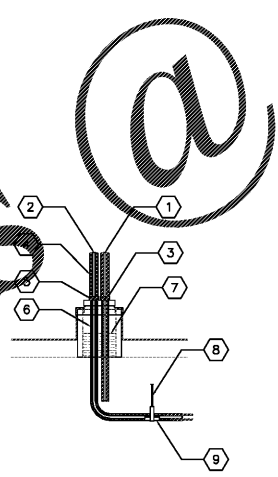
- ALL MECHANICAL HVAC AND PLUMBING WORK SHALL BE PERFORMED IN STRICT ACCORDANCE WITH THE BASE BUILDING SPECIFICATION AND WITH THE LATEST EDITION OF THE PREVALING STATE MECHANICAL PLUMBING AND BUILDING CODES AS WELL AS ALL REGULATIONS THAT MAY APPLY. IN CASE OF CONFLICT BETWEEN THE CONTRACT DOCUMENTS AND A GOVERNING CODE OR ORDINANCE, THE MORE STRINGENT STANDARD SHALL APPLY.
- COORDINATE EXACT LOCATIONS OF AIR DISTRIBUTION DEVICES WITH CEILING AND LIGHT FIXTURE LAYOUT - VERIFY WITH ARCHITECT.
- ALL RECTANGULAR SUPPLY DUCTS ELBOWS SHALL HAVE SINGLE THICKNESS TURNING VANES.
- ALL AIR CONDITIONING DUCTWORK SHALL BE SMACNA 1" PRESSURE CLASSIFICATION WITH SEAL CLASS 'A'.
- RECTANGULAR DUCT SIZES SHOWN INDICATE REQUIRED AIRFLOW SIZES. SHEET METAL CONTRACTORS SHALL INCREASE SIZES TO ALLOW FOR 1.5-INCH THICK LINER EQUIVALENT TO KNAAF TYPE 'ATMOSPHERE' UNLESS NOTED OTHERWISE.
- EXACT LOCATIONS OF PACKAGED ROOF TOP UNITS ARE DIMENSIONED ON THE STRUCTURAL FRAMING PLAN. THEY MAY DIFFER SLIGHTLY FROM WHAT IS SHOWN.
- ALL ROUND AIR CONDITIONING DUCTWORK SHALL HAVE 2 INCH THICK EXTERIOR WRAP CONSISTING OF A 7 FIBERGLASS BLANKET WITH FACTORY APPLIED VAPOR BARRIER FACED AND HAVING A MINIMUM R-VALUE OF 6.0 UNLESS NOTED OTHERWISE.
- IT IS THE INTENT TO HAVE ALL AIR SYSTEMS AIR BALANCED BY AN INDEPENDENT TAB CERTIFIED NEBB CONTRACTOR. AIR QUANTITIES IN MAIN DUCT SHALL BE MEASURED BY FLOW TUBE TRAYS. OUTLET AND INLET AIR QUANTITIES SHALL BE DETERMINED IN ACCORDANCE WITH NEBB PRACTICES.
- UNLESS DIMENSIONED, THE WORK SHOWN ON THE CONTRACT DRAWINGS IS DIMENSIONED ILLUSTRATING THE GENERAL ARRANGEMENT. CONTRACTORS SHALL ADVISE TO ARRANGEMENT SHOWN AS CLOSELY AS THE ACTUAL CONSTRUCTION WILL PERMIT.
- CONTRACTOR SHALL VERIFY ALL EXISTING EQUIPMENT DIMENSIONS, CLEARANCES, AND FIELD DIMENSIONS RELATIVE TO LOCATIONS OF STRUCTURAL FRAMING. DIMENSIONS REQUIRED IN ROUTING OR SIZES OF DUCTWORK TO MAKE WORK SHOWN ON THIS PLAN FIT SHALL BE DETERMINED FROM FIELD COORDINATION PROBLEMS. THESE SHALL BE IDENTIFIED AND ILLUSTRATED ON THIS PLAN BY THE ENGINEER FOR PRIOR REVIEW AND APPROVAL BEFORE INSTALLATION.

SHEET KEYNOTES

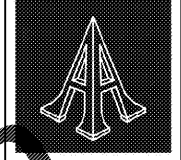
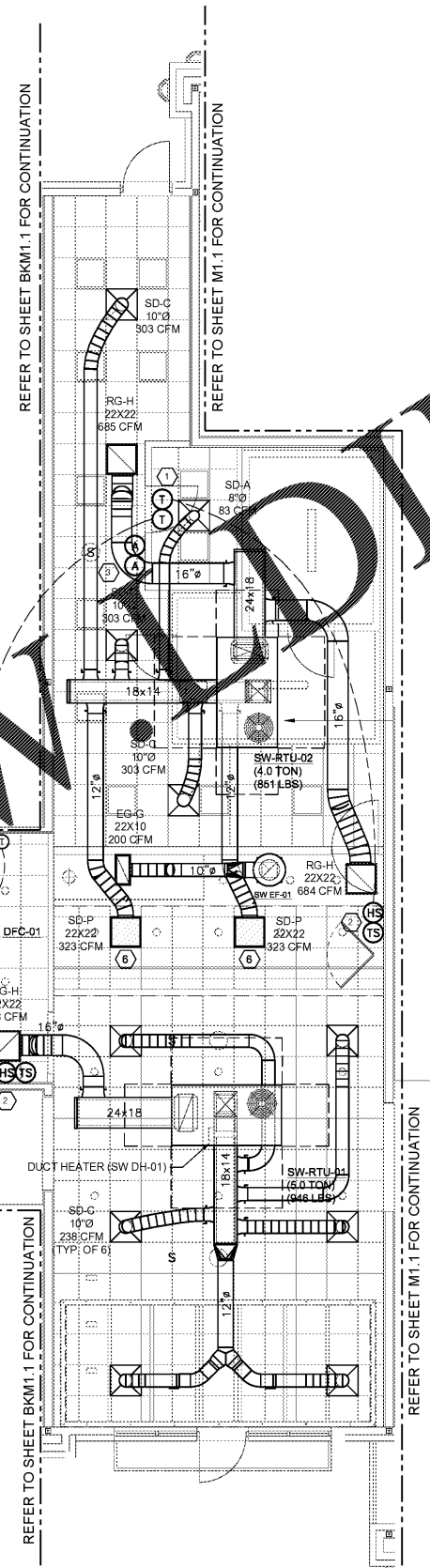
- PROGRAMMABLE THERMOSTAT CONTROLS SHALL BE INSTALLED IN THE MANAGER'S OFFICE ABOVE THE DOOR. COORDINATE THE COMPLETE INSTALLATION WITH THE RTU MANUFACTURER; REFER TO SHEET SW-M3.2 FOR CONTROL SCHEMATIC OF THERMOSTATS.
- WALL MOUNTED REMOTE ZONE TEMPERATURE AND HUMIDITY SENSORS SHALL BE MOUNTED AT 54" AFF, AND WIRED BACK TO THE HVAC THERMOSTAT IN MANAGER'S OFFICE. COORDINATE PLACEMENT WITH WALL DECOR AND EQUIPMENT. FIELD VERIFY WITH THE OWNER'S REPRESENTATIVE FOR THE FINAL LOCATION PRIOR TO INSTALLATION.
- REMOTE ANUNCIATORS MOUNTED ON WALL 60" A.F.F.; LABEL ACCORDING TO AREAS OF SERVICE (IE. KITCHEN OR DINING).
- WALL MOUNTED THERMOSTAT AT 54" AFF; COORDINATE PLACEMENT WITH WALL DECOR AND EQUIPMENT. FIELD VERIFY WITH THE OWNER'S REPRESENTATIVE FOR THE FINAL LOCATION PRIOR TO INSTALLATION.
- TURN 8" Ø DUCT DOWN INTO COVE BALANCE TO AIRFLOW SHOWN ON SCHEDULES.
- PROVIDE 22x22x27 PLENUM ON DIFFUSER WITH SIDE TAP DUCT CONNECTION TO CREATE A LAMINAR FLOW DISCHARGE OUT OF DIFFUSER.

LEGEND			
SYMBOL	DESCRIPTION	SYMBOL	DESCRIPTION
	TYPICAL BRANCH DUCT TAKE-OFF WITH MANUAL VOLUME DAMPER		FIRE DAMPER WITH ACCESS DOOR
	SINGLE THICKNESS TURNING VANES		FLEX CONNECTION 10'-0" MAX LENGTH
	DUCT TRANSITION		DUCT SMOKE DETECTOR
	ROUND CONICAL TEE WITH VOLUME DAMPER		THERMOSTAT
	CEILING DIFFUSER, 4-WAY PATTERN UNLESS NOTED OTHERWISE		REMOTE TEMPERATURE SENSOR
	CEILING DIFFUSER, 2-WAY PATTERN UNLESS NOTED OTHERWISE		HUMIDISTAT AND/OR SENSOR
	SLOT DIFFUSER, 1-WAY HORIZONTAL PATTERN UNLESS NOTED OTHERWISE		ALARM ANUNCIATOR
	CEILING GRILLE, RETURN AND/OR EXHAUST AIR		ROOF MOUNTED EXHAUST FAN

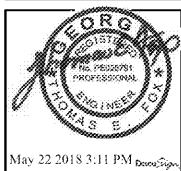
- KEYED NOTES:
- REFRIGERANT LIQUID LINE
 - REFRIGERANT SUCTION & LIQUID LINE WITH 3/4" THICK EXTERNAL FOAM INSULATION (ARMAFLEX BY ARMACELL OR EQUAL)
 - STAINLESS STEEL CLAMP
 - APPLY WEATHERPROOFING OVER FOAM INSULATION (ALUMAGUARD BY POLYGUARD OR EQUAL)
 - WRAP FOAM INSULATION OVER PIPE PORTAL NIPPLE AND STAINLESS STEEL CLAMP
 - RESTART FOAM INSULATION IMMEDIATELY AFTER PIPE PORTAL PENETRATION
 - INSULATE BOTTOM OF ROOF PORTAL CURB (MIN. R=19)
 - PIPE HANGER
 - LIGHT GAUGE GALVANIZED STEEL PROTECTIVE SHIELD



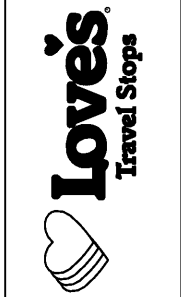
2 REFRIGERANT PIPE INSTALLATION
SCALE: NONE



Pascal Aughtry & Associates, PC
405.463.3494
Fax: 405.463.3493
937 East Britton Road
Oklahoma City, OK 73114
pascalarch.com



A NEW TRAVEL STOP
STORE NO. 735
CALHOUN, GA



Revisions:

No.	Date

Project No.: LVS - 18735
Date: 05-22-18
Sheet No.:
SWM1.1
OF:

