

Pascal Aughtry & Associates, PC
 405.463.3434
 Fax: 405.463.3493
 937 East Britton Road
 Oklahoma City, OK 73114
 pasca@arch.com



A NEW TRAVEL STOP
 STORE NO. 735
 CALHOUN, GA

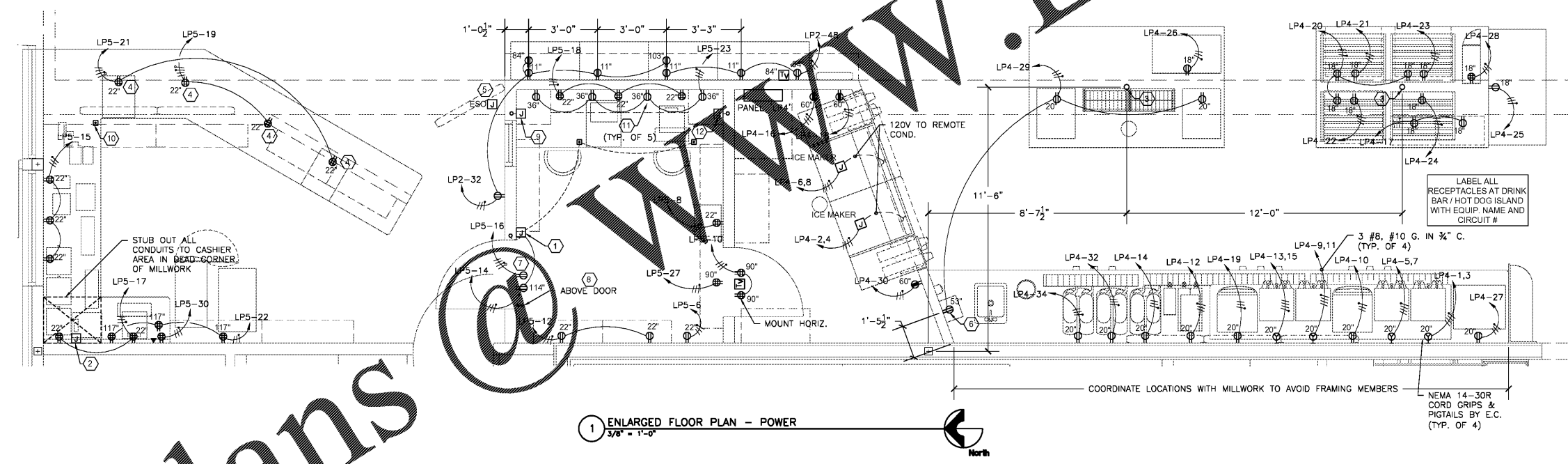
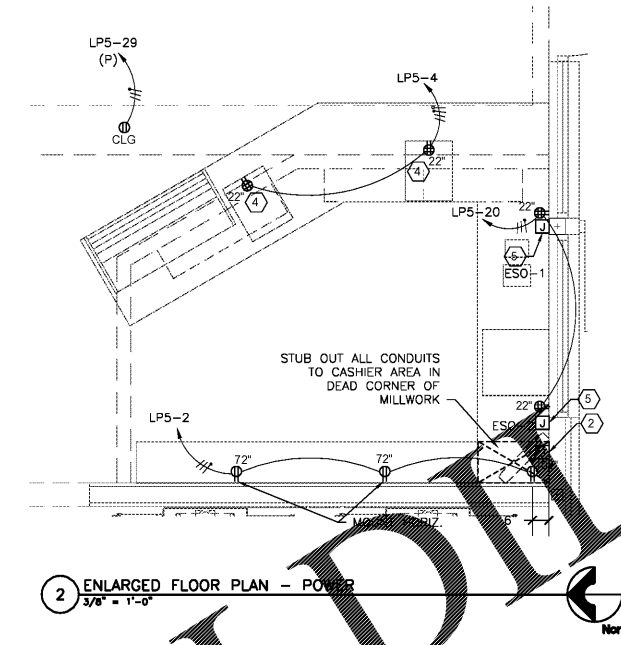


| Revisions: | |
|------------|------|
| No. | Date |
| | |
| | |
| | |

Project No.: LVS - 18735
 Date: 05-22-18
 Sheet No.:

E-4.1

OF:



POWER PLAN GENERAL NOTES:

- ALL LOW VOLTAGE PHONE & COMMUNICATION LINES PROVIDED BY OWNER.
- ALL OUTLET ELEVATIONS ARE MINIMUM TO CENTER OF BOXES AND ARE BASED ABOVE CONCRETE SLAB. TYPICAL 18" AFF. U.O.N.
- ALL CONDUITS FOR THE CASHIER COUNTER RECEPTACLES AND OTHER ELECTRICAL CONNECTIONS SHALL BE ROUGHED IN AT THE DEAD CORNERS OF THE MILLWORK SHOWN.
- ALL CASHIER COUNTER RECEPTACLES AND ELECTRICAL CONNECTIONS SHALL BE COMPLETED AFTER THE MILLWORK CABINETS HAVE BEEN INSTALLED.

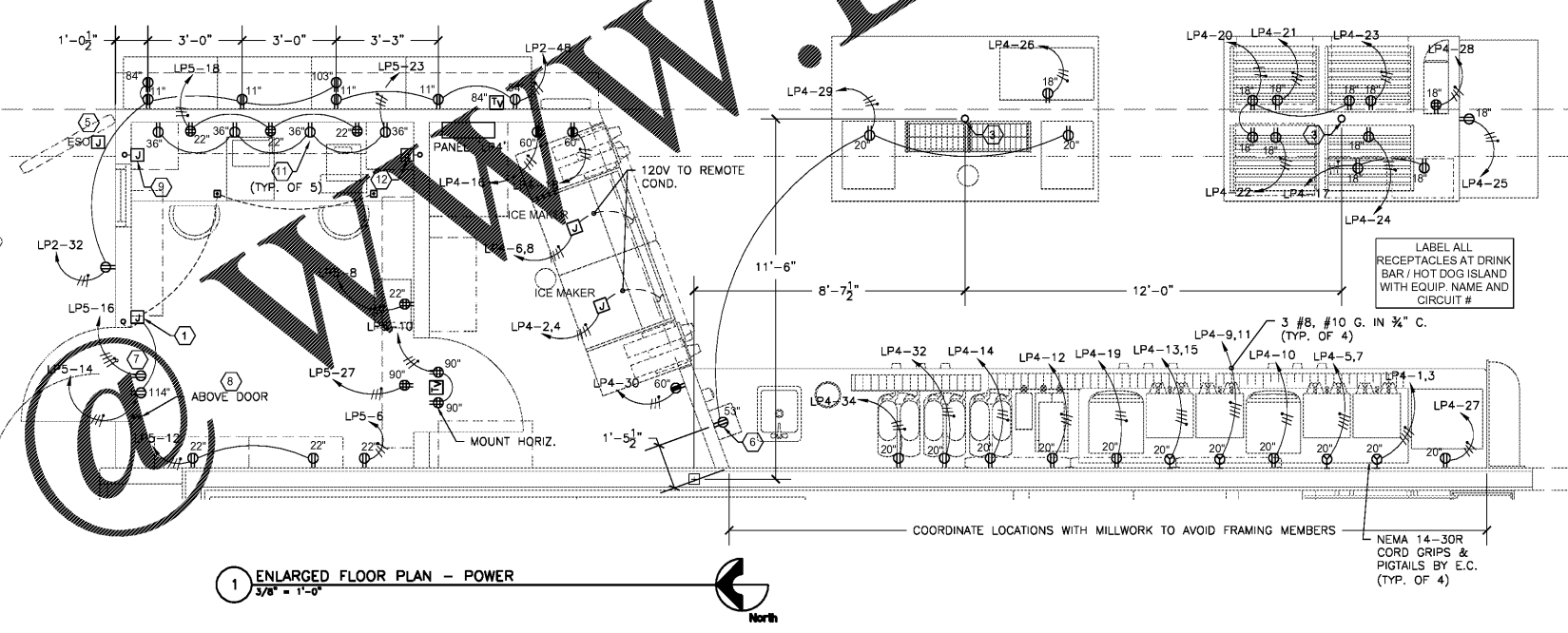
POWER PLAN KEYED NOTES:

- INSTALL ELECTRICAL DOOR STRIKE PER MANUFACTURER'S RECOMMENDATIONS. ALSO SHOWN APPROX. LOCATION OF PUSH BUTTON UNDERNEATH COUNTER, VERIFY FINAL LOCATION OF BUTTON IN FIELD.
- ALL 120V ELECTRICAL POWER TO CAR OR TRUCK CASHIER AREAS MILLWORK SHALL ENTER FROM AN 8" X 8" SURFACE MOUNTED J-BOX AT 24" AFF. HOLD TIGHT TO EXTERIOR WALL, OR THROUGH FLOOR AS INDICATED ON PLAN.
- LOCATION FOR PVC CONDUIT STUB-UPS. ONCE THE ISLAND IS SET, EXTEND FLEX CONDUIT TO THE RECEPTACLES. INSTALL (3) ADDITIONAL CONDUITS WITH PULLSTRING FOR FUTURE USE.
- CASH REGISTER & CPU SHALL QUAD RECEPTACLES ON DEDICATED CIRCUIT WITH ISOLATED GROUND. STUB UP CONDUITS AT FUEL DESK IN THE DEAD CORNER OF MILLWORK CABINETS. LOCATE RECEPTACLE UNDER FIXED SHELF OF MILLWORK. LOCATE AFTER MILLWORK CABINETS HAVE BEEN INSTALLED. FIELD VERIFY FINAL LOCATIONS.

- PROVIDE J-BOX SET HORIZONTALLY AT 60" AFF. WITH 1/2" CONDUIT TO ATTIC WITH CONTINUATION TO ELEC. ROOM, FOR E.S.O. CONNECTION. FUEL CONTRACTOR SHALL PROVIDE WIRING AND MAKE FINAL CONNECTION. PROVIDE AT LOCATION #1 UNLESS REJECTED BY AHJ. THEN, INSTALL AT LOCATION #2.
- RECEPTACLE RECESSED IN WALL FOR PAPER TOWEL DISPENSER. USE A ARLINGTON INDUSTRIES RECESSED ELECTRICAL BOX (DVF11W) TO MOUNT STANDARD RECEPTACLE AND WALLPLATE AT HEIGHT INDICATED. BOX SHALL BE CENTERED ON PAPER TOWEL DISPENSER. SEE A-18/A FOR HORIZONTAL ROUGH-IN DIMENSIONS.
- MOUNT OUTLET ABOVE DOOR, ABOVE THE CEILING.
- GENERAL CONTRACTOR SHALL PROVIDE AND INSTALL "ON-OFF-AUTO" SWITCH TO SERVE AS THE SITE LIGHTING MANUAL OVERRIDE SWITCH. CONNECT TO 120 VOLT CONTACTOR COIL TO OVERRIDE PHOTOCCELL CONTROL.
- 2" ROUND EMPTY CONDUIT FROM ATTIC SPACE TO 6" ABOVE SLAB. TERMINATE WITH 6" X 6" X 4" BOX IN OFFICE FOR TELEPHONE AND I.C. CONTRACTOR.

- MUSHROOM BUTTON FOR CONTROL OF SECURITY GATE AT TIRE PASS LANE. IF NEEDED, PLUG BUTTON POWER SUPPLY INTO NEARBY RECEPTACLE. COORDINATE LOCATION OF BUTTON WITH PROJECT MANAGER. SEE SHEET E-8.2 FOR WIRING DIAGRAM AND ADDITIONAL DETAIL AT TRUCK FUELING LANE.
- RECEPTACLE SHALL HAVE DUAL USB CHARGING PORTS (HUBBELL USB15X2). TYPICAL OF ALL RECEPTACLES ABOVE DESK.
- 3" ROUND EMPTY CONDUIT FROM ATTIC SPACE TO 20" ABOVE SLAB. TERMINATE WITH 6" X 6" X 4" BOX IN OFFICE FOR TELEPHONE AND I.C. CONTRACTOR.

Order Plans



2 ENLARGED FLOOR PLAN - POWER
 3/8" = 1'-0"

1 ENLARGED FLOOR PLAN - POWER
 3/8" = 1'-0"