

Pascal Aughtry & Associates, PC  
 405.463.3434  
 Fax: 405.463.3493  
 937 East Brilton Road  
 Oklahoma City, OK 73114  
 pascaarch.com

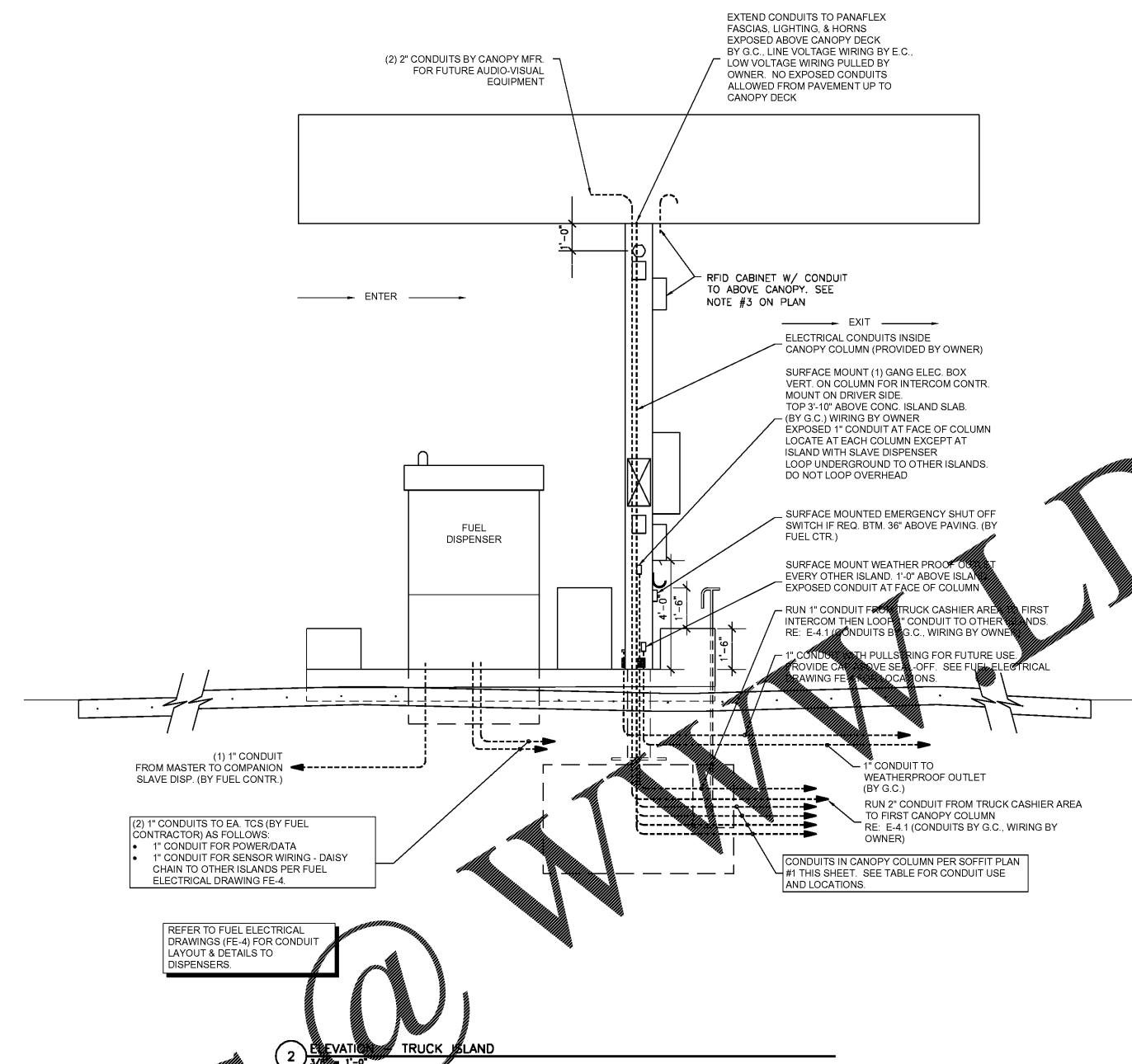


A NEW TRAVEL STOP  
 STORE NO. 735  
 CALHOUN, GA



Revisions:	
No.	Date

Project No.: LVS - 16735  
 Date: 05-22-18  
 Sheet No.:  
**E-1.5**  
 OF:

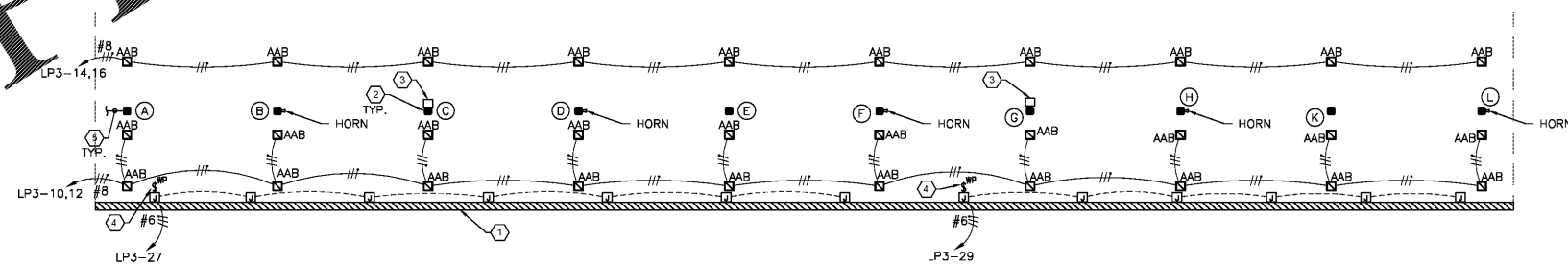


(2) 1" CONDUITS TO EA TCS (BY FUEL CONTRACTOR) AS FOLLOWS:  
 • 1" CONDUIT FOR POWER/DATA  
 • 1" CONDUIT FOR SENSOR WIRING - DAISY CHAIN TO OTHER ISLANDS PER FUEL ELECTRICAL DRAWING FE-4

REFER TO FUEL ELECTRICAL DRAWINGS (FE-4) FOR CONDUIT LAYOUT & DETAILS TO DISPENSERS.

2 ELEVATION - TRUCK ISLAND  
 3/8" = 1'-0"

COLUMN	CONDUITS INSIDE COLUMN
(A)	(2) 2" C. FOR FUTURE AV USE
(B)	DOWNSPOUT
(C)	(2) 1" C. FOR CANOPY LIGHTS (1) 1" C. FOR RFID DATA CABLES
(D)	DOWNSPOUT
(E)	(1) 1" C. FOR HORNS (2) 1" C. FOR FUTURE USE
(F)	DOWNSPOUT 1" C. FOR FUTURE USE
(H)	DOWNSPOUT
(I)	EMPTY
(L)	DOWNSPOUT



\*\*SEE SHEET SP-3 FOR CANOPY DIMENSIONS\*\*

1 SOFFIT PLAN - TRUCK CANOPY  
 3/32" = 1'-0"

GENERAL NOTES

- ALL WIRING SHALL BE MINIMUM #10 AWG (UNLESS OTHERWISE NOTED).
- CANOPY LIGHT FIXTURES ARE INSTALLED IN THE CANOPY BY CANOPY CONTRACTOR. E.C. SHALL COMPLETE INSTALLATION AND CIRCUIT AS SHOWN.

SHEET KEYNOTES

- BACKLITE FASCIA LIGHT BOXES WILL BE ERECTED BY OWNER. UP TO 105'-0" LENGTHS, UP TO (7) 15' SECTIONS AT A TIME. FASCIAS MAY BE LAID OUT STARTING FROM THE LEFT TO THE RIGHT. THE PRIMARY ELECTRICAL CONNECTION POINT IS ALWAYS THE TOP CENTER OF THE LEFT BOX. SECONDARY CABLES CONTINUE INSIDE THE REMAINING LIGHT BOXES TO EACH FEED POINT SHOWN.  
 ELECTRICAL CONTRACTOR SHALL COMPLETE THE "SYSTEM 90 INSTALLATION SUMMARY" LOCATED IN DIVISION 10 OF THE SPECIFICATIONS BOOKLET AND MAIL TO:  
 MR. PAUL MAYFIELD  
 SHARPLINE CONVERTING  
 1520 S. TYLER RD.  
 WICHITA, KS 67277  
 1-800-888-4888
- CANOPY COLUMN, TYPICAL, WITH CONDUITS OR OTHER FEATURES AS OTHERWISE NOTED.
- OWNER PROVIDED A NEMA 4 ENCLOSURE ON COLUMN WITH TOP 24" BELOW CANOPY. ROUTE A 2" CONDUIT WITH PULLSTRING FOR DATA CABLING UP THROUGH CANOPY STARTING AT 6" BELOW CANOPY AND TERMINATE 12" ABOVE CANOPY WITH A WEATHERHEAD. CONDUIT SHALL BE CENTERED ON COLUMN. SEAL ALL CONDUIT PENETRATIONS THROUGH CANOPY AND AT WEATHERHEAD WITH POLYURETHANE SEALANT (EQ. TO VULKEM 116).
- NOTE NOT USED
- STUB OUT CONDUITS INSIDE COLUMNS TO THIS SIDE OF THE COLUMN UNDER SLAB.

Order Plans @

WWW.LDILine.com