

Pascal Aughtry & Associates, PC

405.463.3434
Fax: 405.463.3493
937 East Brilton Road
Oklahoma City, OK 73114
paac@earthlink.net



A NEW TRAVEL STOP
STORE NO. 735
CALHOUN, GA



Revisions:	
No.	Date

Project No.: LVS - 18735
Date: 05-22-18
Sheet No.:

E-1.4

OF:

EXTEND CONDUITS TO PANAFLEX FASCIAS, LIGHTING, & HORNS EXPOSED ABOVE CANOPY DECK BY G.C. LINE VOLTAGE WIRING BY E.C. LOW VOLTAGE WIRINGS PULLED BY OWNER. NO EXPOSED CONDUITS ALLOWED FROM PAVEMENT UP TO CANOPY DECK

HEXAGON J-BOX BELOW CANOPY FOR HORN BY G.C. RE. SP-2/E (HORN WIRING BY OWNER)

ELECTRICAL CONDUITS INSIDE CANOPY COLUMN (PROVIDED BY OWNER)

1" CONDUIT WITH PULLSTRING FOR FUTURE USE. CAP ABOVE SEAL OFF ON EXTERIOR OF COLUMN. (BY G.C.)

1" CONDUIT TO OUTLET OR E.S.O. - DAISY CHAIN TO OTHER OUTLETS (BY G.C.)

RUN 1" CONDUIT FROM GAS CASHIER'S AREA TO FIRST INTERCOM THEN LOOP 1" CONDUIT TO OTHER ISLANDS. RE. SP-2/D & E-4.1 (CONDUITS BY G.C.) WIRE PULLED BY OWNER

1" CONDUIT TO FIRST ISLAND STUB UP ABOVE DECK FOR FUTURE USE. (BY G.C.)

1" CONDUIT TO FIRST ISLAND STUB UP IN COL. FOR LIGHTING (BY G.C.)

1" CONDUIT TO FIRST ISLAND STUB UP IN COL. FOR HORNS (BY G.C.)

1" CONDUIT TO FIRST ISLAND STUB UP IN COL. FOR PANAFLEX (BY G.C.)

SURFACE MOUNT (2) GANG BOX ON COLUMN FOR INTERCOM CONTRACTOR. MOUNT BOTTOM OF BOX 40" ABOVE ISLAND CURB (BY G.C.) LOCATE ON ISLANDS PER DETAIL SP-2/C EXPOSED CONDUIT AT FACE OF COLUMN LOOP UNDERGROUND TO OTHER ISLANDS DO NOT LOOP OVERHEAD

SURFACE MOUNT WEATHERPROOF RECEPTACLE OR E.S.O. WITH BOTTOM OF BOX @ 32" ABOVE PAVING. LOCATE AT ISLANDS PER ELECTRICAL DRAWINGS. INSTALL EXPOSED CONDUIT AT FACE OF COLUMN

EXPOSED SEAL-OFFS (TYP. EACH CONDUIT)

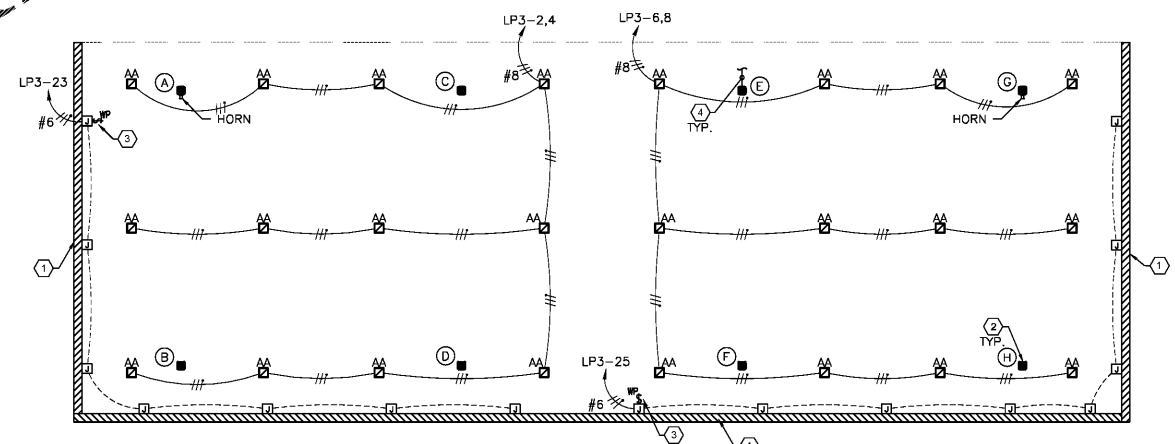
(2) 1" CONDUITS TO TCS (BY FUEL CONTRACTOR) AS PER DRAWINGS
• 1" CONDUIT FOR DATA
• 1" CONDUIT FOR SENSORS (DAISY CHAIN) OTHER ISLANDS

REFER TO FUEL ELECTRICAL DRAWINGS (FE-1) FOR CONDUIT DETAILS AND LAYOUT TO DISPENSERS.

2 ELEVATION - CAR ISLAND
3/8" = 1'-0"

SEE SHEET SP-2 FOR CANOPY DIMENSIONS

COLUMN	CONDUITS INSIDE COLUMN
(A)	(1) 1" C. FOR LIGHT FIXTURES
(B)	DOWNSPOUT
(C)	(1) 1" C. FOR CANOPY LIGHTS (1) 1" C. FOR LIGHT BOXES
(D)	DOWNSPOUT
(E)	(1) 1" C. FOR FUTURE USE (1) 1" C. FOR HORNS (1) 1" C. FOR CANOPY LIGHTS
(F)	DOWNSPOUT
(G)	EMPTY
(H)	DOWNSPOUT



1 SOFFIT PLAN - CAR CANOPY
3/32" = 1'-0"

GENERAL NOTES

- ALL WIRING SHALL BE MINIMUM #10 AWG (UNLESS OTHERWISE NOTED).
- CANOPY LIGHT FIXTURES ARE INSTALLED IN THE CANOPY BY CANOPY CONTRACTOR. E.C. SHALL COMPLETE INSTALLATION AND CIRCUIT AS SHOWN.

SHEET KEYNOTES:

- BACKLITE FASCIA LIGHT BOXES WILL BE ERECTED BY OWNER UP TO 105'-0" LENGTHS, UP TO (7) 15' SECTIONS AT A TIME. FASCIAS MAY BE LAID OUT STARTING FROM THE LEFT TO THE RIGHT. THE PRIMARY ELECTRICAL CONNECTION POINT IS ALWAYS THE TOP CENTER OF THE LEFT BOX. SECONDARY CABLES CONTINUE INSIDE THE REMAINING LIGHT BOXES TO EACH FEED POINT SHOWN.
ELECTRICAL CONTRACTOR SHALL COMPLETE THE "SYSTEM 90 INSTALLATION SUMMARY" LOCATED IN DIVISION 10 OF THE SPECIFICATIONS BOOKLET AND MAIL TO:
MR. PAUL MAYFIELD
SHARPLINE CONVERTING
1520 S. TYLER RD.
WICHITA, KS 67277
1-800-888-4888
- CANOPY COLUMN, TYPICAL, WITH CONDUITS OR OTHER FEATURES AS OTHERWISE NOTED.
- PROVIDE A WEATHERPROOF SPST SWITCH FOR EACH LIGHT BOX CIRCUIT. LOCATE SWITCH ABOVE CANOPY ROOF AT THE ELECTRICAL CONNECTION POINT.
- STUB OUT CONDUITS INSIDE COLUMNS TO THIS SIDE OF THE COLUMN UNDER SLAB.

Order Plans

WWW.DILine.com