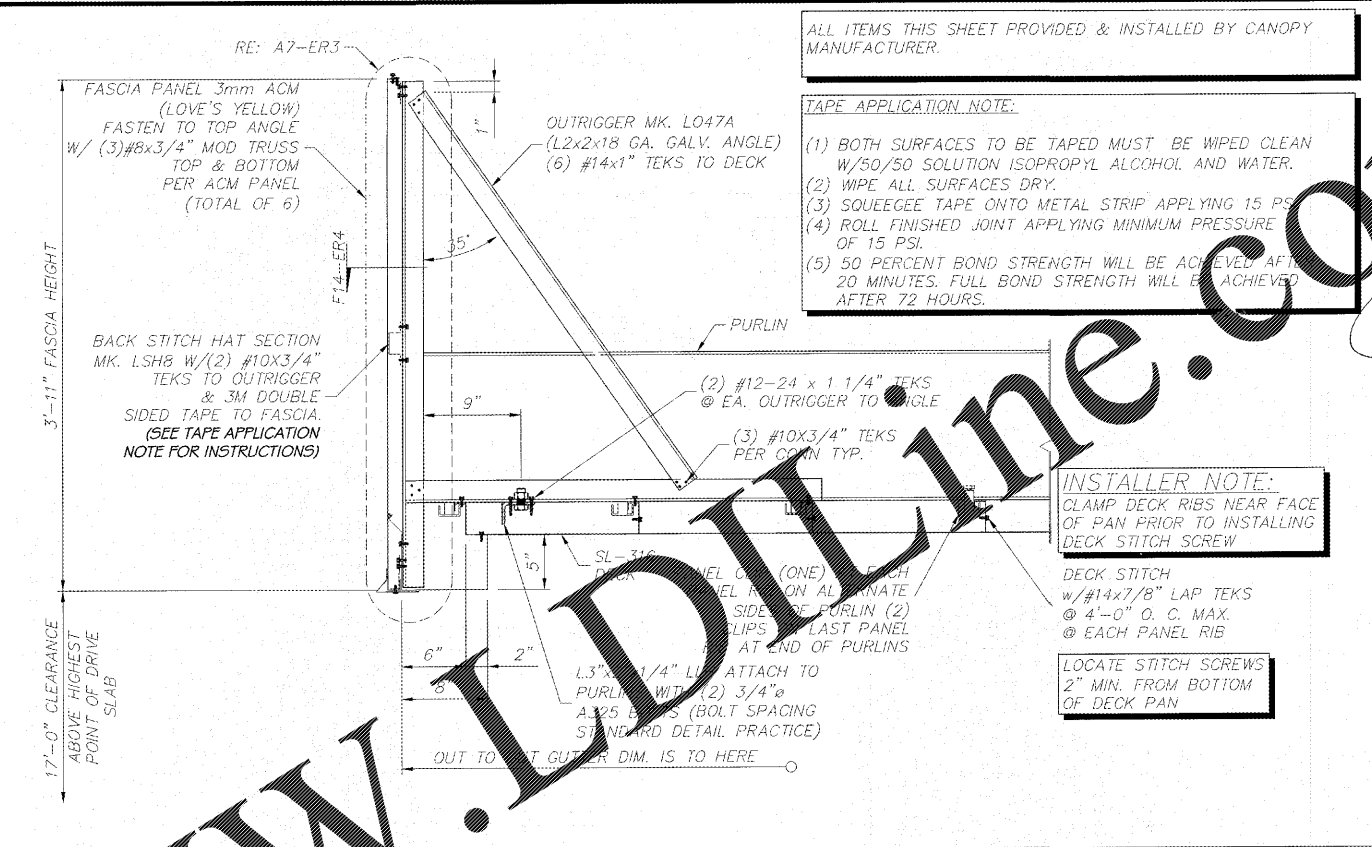
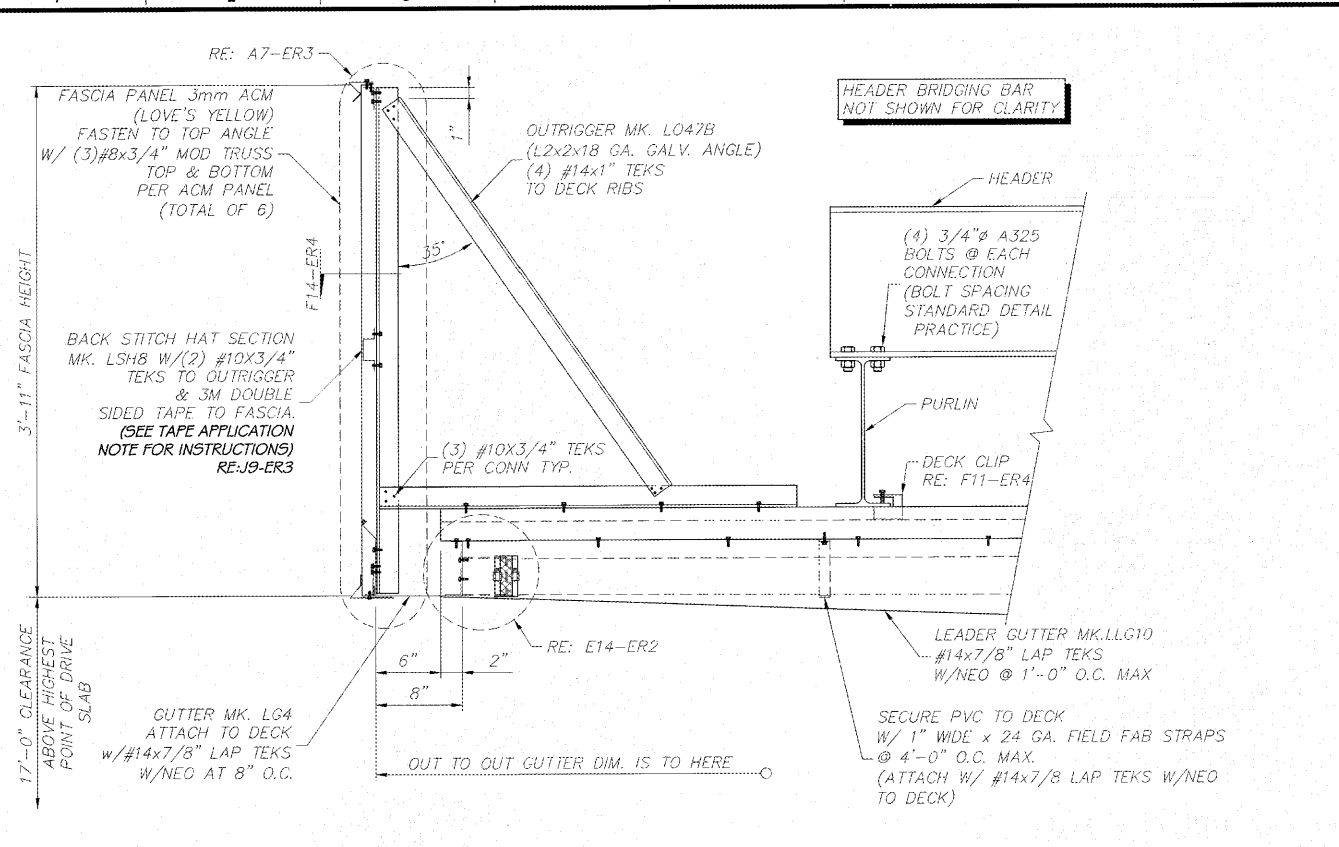


Order Plans



ALL ITEMS THIS SHEET PROVIDED & INSTALLED BY CANOPY MANUFACTURER.

TAPE APPLICATION NOTE:

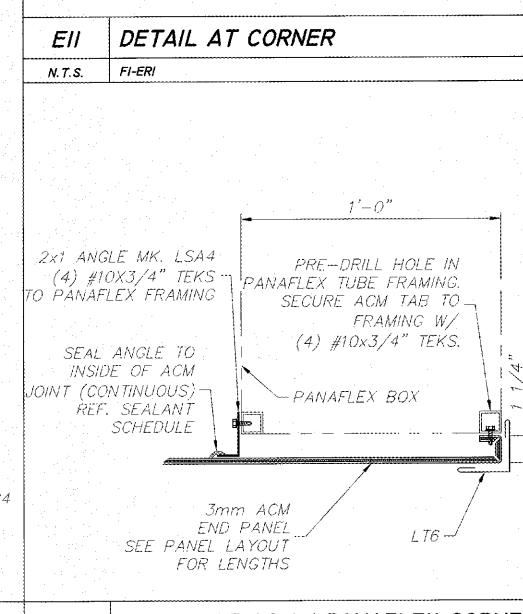
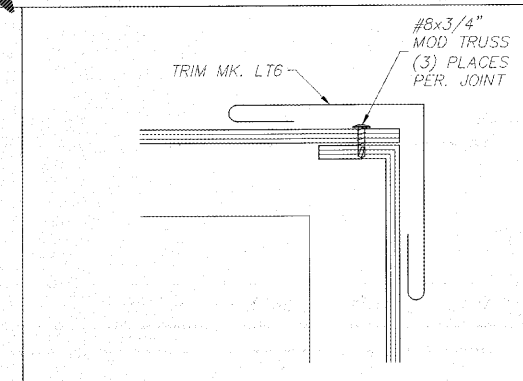
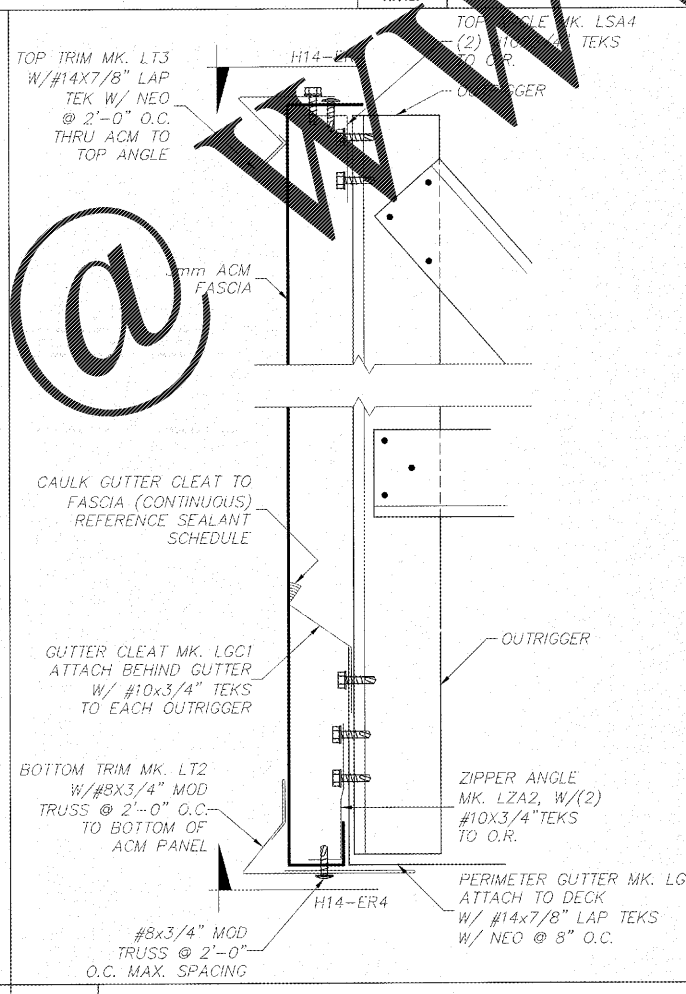
- (1) BOTH SURFACES TO BE TAPED MUST BE WIPED CLEAN W/ 50/50 SOLUTION ISOPROPYL ALCOHOL AND WATER.
- (2) WIPE ALL SURFACES DRY.
- (3) SOUEEGEE TAPE ONTO METAL STRIP APPLYING 15 PSI.
- (4) ROLL FINISHED JOINT APPLYING MINIMUM PRESSURE OF 15 PSI.
- (5) 50 PERCENT BOND STRENGTH WILL BE ACHIEVED AFT 20 MINUTES. FULL BOND STRENGTH WILL BE ACHIEVED AFTER 72 HOURS.

INSTALLER NOTE:

CLAMP DECK RIBS NEAR FACE OF PAN PRIOR TO INSTALLING DECK STITCH SCREW

DECK STITCH W/ #14x7/8" LAP TEKS @ 4'-0" O.C. MAX @ EACH PANEL RIB

LOCATE STITCH SCREWS 2" MIN. FROM BOTTOM OF DECK PAN



EI4 NOT USED
N.T.S.

DEAD LOAD = 3 p.s.f. (DECK + LIGHTS) + WEIGHT OF STRUCTURAL COMPONENTS
LIVE LOAD = 20 p.s.f.
V, ULY = 116 m.p.h. EXP. C
V, ASD = 90 m.p.h. EXP. C

BLDG CODE = 2012 INTERNATIONAL BUILDING CODE W/ 2014, 15, 17, 18 EQUIVALENT LATERAL FORCE PROCEDURE
LATERAL FORCE RESISTING SYSTEM = CANTILEVERED COLUMN SYSTEM-ORDINARY STEEL MOMENT FRAME

SITE CLASS = D
S_s (0.2) = 0.353
S₁ (1.0) = 0.117
SDS = 0.36
SD1 = 0.18
F_o = 1.52
F_v = 2.33
R = 1.25

IMPORTANCE FACTOR = 1.0
RISK CATEGORY = II
SEISMIC DESIGN CATEGORY = C
CS = 0.286
CONSTRUCTION TYPE = IIB
RISK CATEGORY = M

TOTAL SEISMIC BASE SHEAR BOTH DIRECTIONS = 8.10 KIPS

LANE SUPPLY INC.
128 FAIRVIEW
ROSTON, VA 24610
(424) 261-5454

SEAL
GEORGIA REGISTERED PROFESSIONAL ENGINEER
STUART D. MCCLURE
JAN 17 2018

REVISIONS

NO. DATE

LSC: 60104
DRAWN BY: JAR
CHECKED BY:
DATE: 01/15/18

LOVE'S COUNTRY STORES
LOVE'S #735 DIESEL
1-75 @ EXIT 310
CALHOUN, GA
23'-11" X 178'-4" CANOPY

SHEET TITLE
TRUCK ER3 OF 4