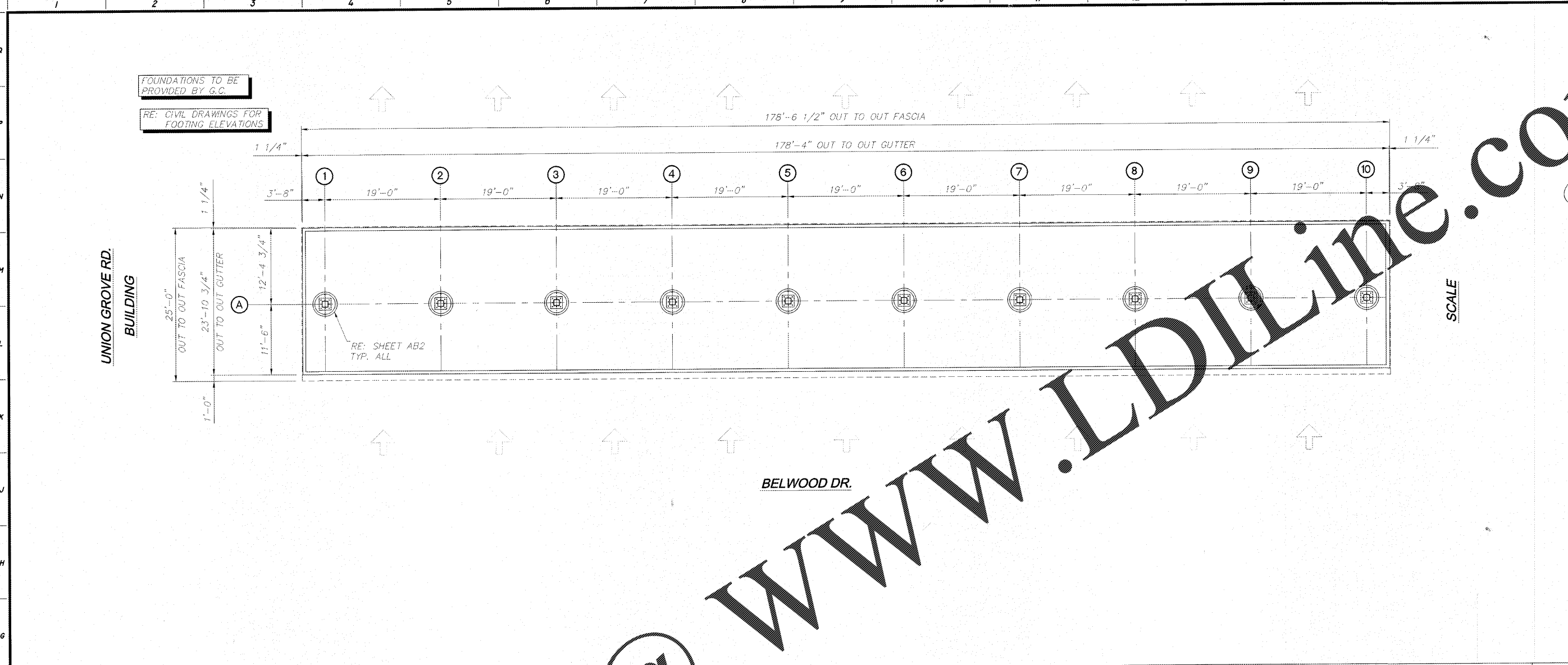


NO.	DATE	REVISIONS	DRAWN	CHK'D

L.S.C.: 60104
 DRAWN BY: JAR
 CHECKED BY:
 DATE: 01/15/18

LOVE'S COUNTRY STORES
 LOVE'S #735 DIESEL
 1-75 @ EXIT 310
 CALHOUN, GA
 23'-11" X 178'-4" CANOPY

SHEET TITLE
TRUCK
ABI OF 2



F1 COLUMN AND FOOTING LOCATIONS

- AI FOOTING NOTES**
- ALL FOUNDATION WORK BY OTHERS AND SUBJECT TO LOCAL APPROVAL.
 - THE FOUNDATION DESIGN IS BASED UPON SECTION 1807.3.2.2- 2012 I.B.C. EDITION. THE DESIGN CRITERIA IS BASED ON GEOTECHNICAL SOILS REPORT PREPARED BY: TERRACON CONSULTANTS INC. TERRACON PROJECT NO. 49179005 DATED: MARCH 2, 2017; SITE CLASS D, SOIL BEARING CAPACITY OF 2500 p.s.f. AND A PASSIVE SOIL PRESSURE OF 145 p.s.f. PER FOOT OF DEPTH.
 - DRILLED SHAFT FOOTINGS SHALL BE INSTALLED PER ACI STD. 308.
 - CONCRETE DESIGN AND CONSTRUCTION SHALL CONFORM TO STANDARD 318-11 "BUILDING CODE REQUIREMENTS FOR REINFORCED CONCRETE."
 - MINIMUM COMPRESSIVE STRENGTH OF CONCRETE (F_c) AT THE END OF 28 DAYS SHALL BE 2500 PSI MIN.
 - REINFORCING STEEL SHALL BE GRADE 60 AND CONFORM TO ASTM A615 LATEST REVISION.
 - DETAILING, FABRICATION AND PLACEMENT OF REINFORCING BARS SHALL COMPLY WITH ACI 318 AND AIA 318 STANDARDS.
 - ANCHOR BOLTS SHALL CONFORM TO ASTM F1554-GR 55.
 - CANOPY MANUFACTURER IS NOT RESPONSIBLE FOR FOOTING POURED PRIOR TO PERMITTING.
 - FOOTING ARE DESIGNED TO BE CONFINED AT THE TOP BY A 6" SLAB. IF THEY ARE NOT, PLEASE NOTIFY CANOPY MANUFACTURER.
 - USE MASTER FLOW CEMENT SHRINK PUT OR EQUIVALENT F_m = 4000.
 - G.C. TO ENSURE THAT FOOTINGS DO NOT INTERFERE WITH CONTAINMENT SYSTEM.

- A5 GENERAL NOTES**
- TOP OF ALL CANOPY FOOTINGS ARE TO BE POURED BELOW FINISHED GRADE OR AS REQUIRED BY LOCAL CODES AND ORDINANCES.
 - IT IS THE OWNERS RESPONSIBILITY TO CONVEY TO ALL CONTRACTORS THAT IT IS THEIR RESPONSIBILITY TO INSURE THAT THE SITE IS PROPERLY EXCAVATED AND GRADED. FORMING CONCRETE FORMING PRIOR TO AND AFTER THE POUR, THE CONCRETE SHOULD BE CHECKED FOR PROPER ELEVATION, SQUARE AND CORRECT DIMENSIONS.
 - FOUNDATIONS AND ANCHOR BOLTS ARE EXACT AND SHOULD BE RECHECKED TO INSURE PROPER LOCATION. CORRECTIONS OF LOCATION, OF ELEVATION AND OF DIMENSIONAL ERRORS MUST BE MADE PRIOR TO THE ARRIVAL OF THE ERECTION CREW AND PRIOR TO THE ERECTION OF THE STRUCTURE.
 - AFTER THE FORMS HAVE BEEN REMOVED, ALL TRENCHES, HOLES AND UNEVEN SITE CONDITIONS MUST BE LEVELED TO INSURE A SAFE WORKING AND ACCESS AREA ACCEPTABLE TO LOCAL, STATE, FEDERAL AND OSHA AGENCIES.

A9 NOT USED

A14 DESIGN LOADS

DEAD LOAD = 3 p.s.f.(DECK + LIGHTS) + WEIGHT OF STRUCTURAL COMPONENTS
 LIVE LOAD = 20 p.s.f.
 V, U/LT = 116 m.p.h. EXP. C
 V, ASD = 90 m.p.h. EXP. C

BLDG CODE = 2012 INTERNATIONAL BUILDING CODE W/ 2014,15,17,18
 EQUIVALENT LATERAL FORCE PROCEDURE
 LATERAL FORCE RESISTING SYSTEM =
 CANTILEVERED COLUMN SYSTEM-ORDINARY STEEL MOMENT FRAME

SITE CLASS = D
 S_s (0.2) = 0.353
 S₁ (1.0) = 0.117
 SDS = 0.36
 SD1 = 0.18
 F_v = 1.52
 F_v = 2.33
 R = 1.25

IMPORTANCE FACTOR = 1.0
 RISK CATEGORY = II
 SEISMIC DESIGN CATEGORY = A
 CS = 0.286
 CONSTRUCTION TYPE = IIB
 RISK CATEGORY = M
 TOTAL SEISMIC BASE SHEAR BOTH DIRECTIONS = 8.10 KIPS

WWW.LDILine.com

Order Plans @