

Pascal Aughtry & Associates, PC

405.463.3494
Fax: 405.463.3493
937 East Britton Road
Oklahoma City, OK 73114
pasc@pcarb.com



Jan 4 2018 11:03 AM

Love's
Travel Stops
A NEW TRAVEL STOP
STORE NO. 735
CALHOUN, GA



Revisions:	
No.	Date

Project No.: LVS - 18735
Date: 05-22-18
Sheet No.:

YP1.2

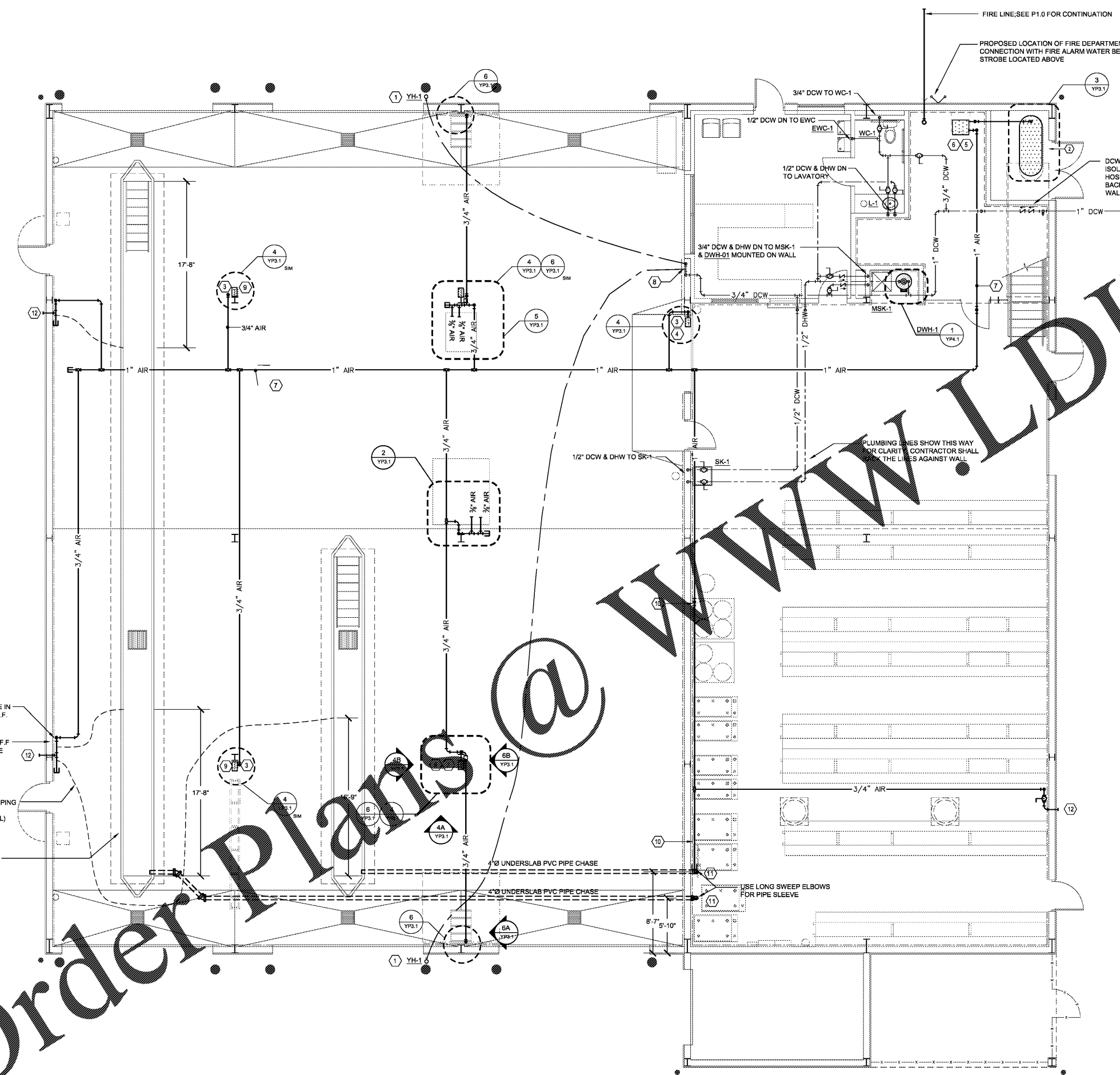
OF:

PLUMBING GENERAL NOTES:

- ALL PLUMBING WORK SHALL BE PERFORMED IN STRICT ACCORDANCE WITH THE BASE BUILDING SPECIFICATION AND WITH THE LATEST EDITION OF THE PREVAILING STATE MECHANICAL/PLUMBING AND BUILDING CODES AS WELL AS ALL REGULATIONS THAT MAY APPLY. IN CASE OF CONFLICT BETWEEN THE CONTRACT DOCUMENTS AND A GOVERNING CODE OR ORDINANCE THE MORE STRINGENT STANDARD SHALL APPLY.
- NO PIPING SHALL RUN EXPOSED IN FINISHED AREAS.
- DOMESTIC WATER SERVICE PIPE 2" AND SMALLER ABOVE SLAB SHALL BE PEX-a DISTRIBUTION TUBING (ASTM F877, SDR 9 TUBING) EQUIVALENT TO UPONOR AQUAPEX.
- DOMESTIC WATER SERVICE PIPE 2 1/2" AND LARGER ABOVE SLAB SHALL BE TYPE "L" HARD DRAWN ASTM B88 COPPER TUBING.
- ALL HORIZONTAL RUNS OF PEX TUBING SHALL BE SUPPORTED BY PEX GALVANIZED SUPPORT CHANNELS.
- INSULATE ALL WATER PIPING EXCEPT EXPOSED TO FIXTURES WITH 1" INCH FIBERGLASS INSULATION WITH NON-COMBUSTIBLE RATED VAPOR BARRIER OR CLOSED CELL FLEXIBLE INSULATION EQUAL TO ARMAFLEX II.
- RUN-OUT SIZES FOR INDIVIDUAL PLUMBING FIXTURES TO BE EQUAL TO ROUNDOFF SIZE NOTED IN THE PLUMBING FIXTURE ROUGH-IN SCHEDULE, SHEET YP1.1.
- PLUMBING/PIPING IS SHOWN SCHEMATICALLY FOR VIEWING PURPOSES ONLY. DURING INSTALLATION FIELD MODIFICATIONS TO ROUTING MAY BE REQUIRED.

(X) SHEET KEYNOTES

- 1-INCH DOMESTIC COLD WATER LINE TO YARD HYDRANT (BY LOVE'S); LOCATE NEXT TO BOLLARD, WRAP POST OF YARD DRANT BELOW GRADE WITH 1/2" EXPANSION JOINT MATERIAL.
- SINGLE-STAGE AIR COMPRESSOR PROVIDED BY OWNER, INSTALLED AND PIPED BY GENERAL CONTRACTOR; SEE MANUFACTURER'S INSTALLATION INSTRUCTIONS FOR REQUIREMENTS.
- 3/4" COMPRESSED AIR LINE DOWN, SECURE TO WALL / COLUMN WITH PIPE CLAMPS (SEE SCHEMATICS 2, 4, 5, & 6 SHEET YP3.1 FOR ADDITIONAL INFORMATION).
- 1/2" & 3/4" HOSE REEL MOUNTED ON JAMB OF OVERHEAD DOOR; RE: YA-4/B-C & YP3.1/4.
- REFRIGERATED AIR DRYERS PROVIDED BY OWNER INSTALLED BY GENERAL CONTRACTOR. STORES LOCATED IN TEXAS & EASTWARD OR LOCATED IN TENNESSEE & SOUTH WILL HAVE DRYERS. G.C. IS RESPONSIBLE TO MAINTAIN PIPE CONFIGURATION WITH FLANGES TO ADD DRYER LATER IF NEEDED.
- LOCATE DRYER ON MEZZANINE FLOOR.
- ALL COMPRESSED AIR PIPING SHALL BE ASTM A53 SCHEDULE 40 STEEL WITH MALLEABLE IRON FITTINGS AND THREADED JOINTS.
- 3/4" DCW DOWN UNDERFLOOR; COORDINATE WITH STRUCTURAL FOOTING.
- 1/2" & 3/4" HOSE REEL MOUNTED ON COLUMN; RE: YA-8/G YP3.1/4.
- EXTEND 1" AIR LINE DOWN TO 8'-0" AFF AND ROUTE THE MANIFOLD AIR LINE ACROSS THE WALL WITH AIR CONNECTIONS AS SHOWN IN DETAIL B SHEET YA2.2.
- 4-inch PVC SLEEVE, STUB UP 6-INCHES A.F.F. AT PARTY WALL END AND 42-INCHES ABOVE PIT FLOOR AT LUBE PIT END - COORDINATE FINAL LOCATION WITH STRUCTURAL.
- 1/2" & 3/8" STUB-OUTS WITH QUICK DISCONNECTS MOUNTED ON EXTERIOR WALL - KEEP FILTER(S), PRESSURE REGULATOR, AND LUBRICATOR INSIDE BUILDING RE: 1/YP3.1.



1 DOMESTIC WATER PLAN
SCALE: 3/16" = 1'-0"



Order Plans @ www.LDBuilding.com