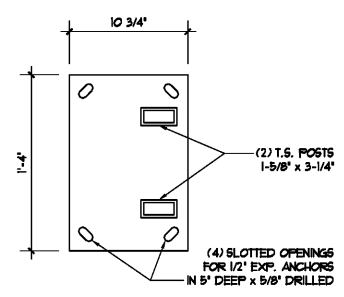
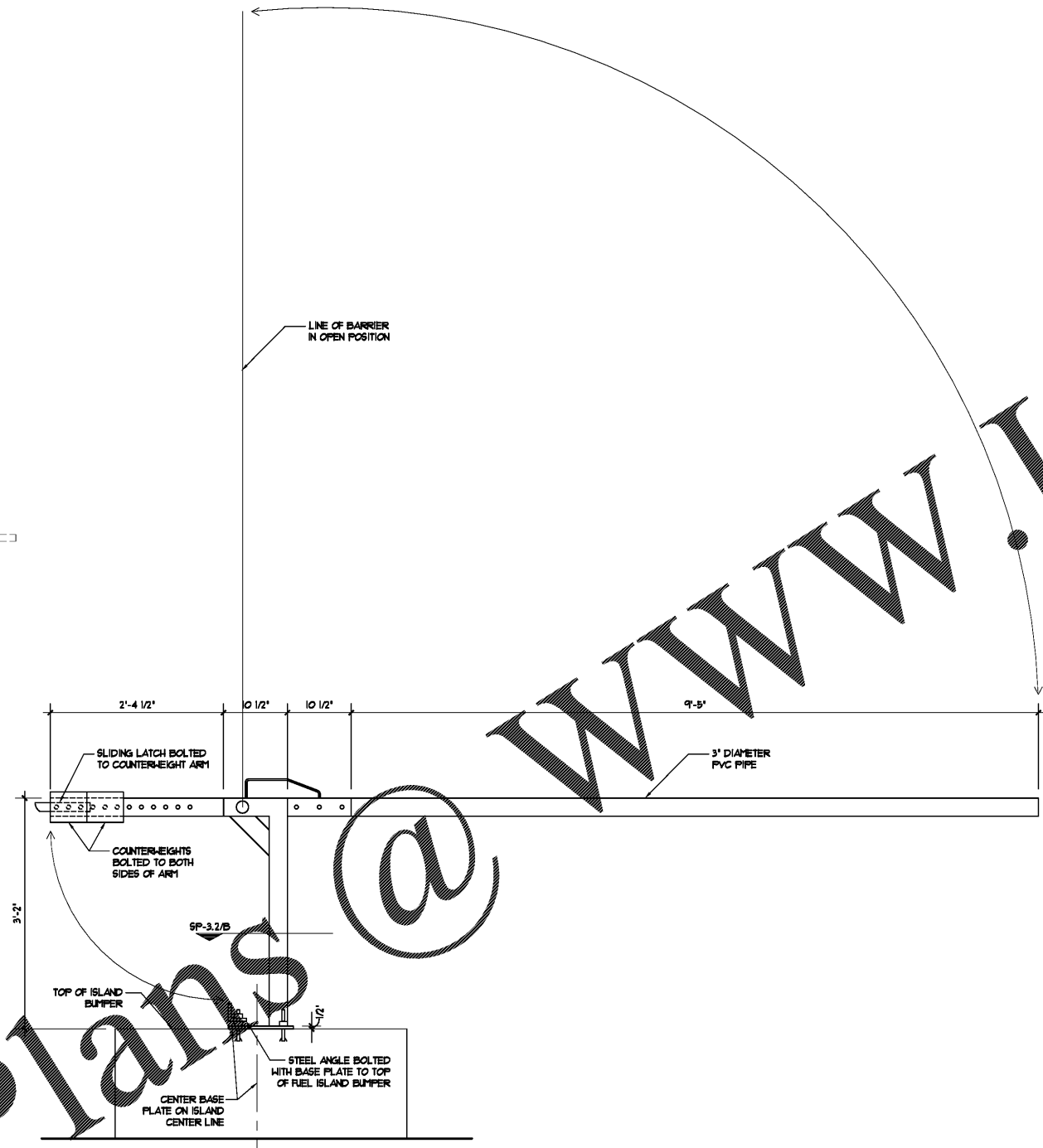


**(A) TRUCK ISLAND PLAN**  
SCALE: 3/8" = 1'-0"  
PROJECT NORTH

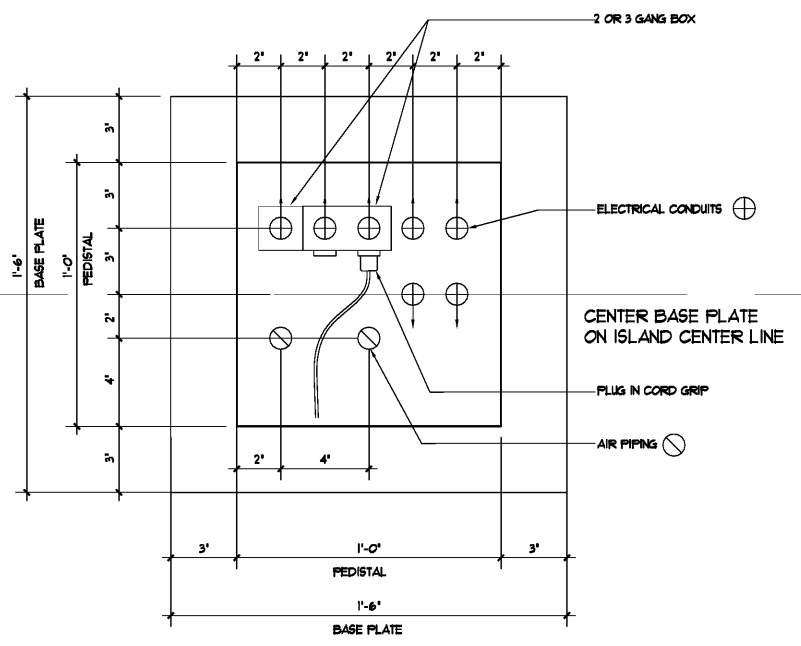


**(B) BASE PLATE**  
SCALE: 1/2" = 1'-0"  
PROJECT NORTH



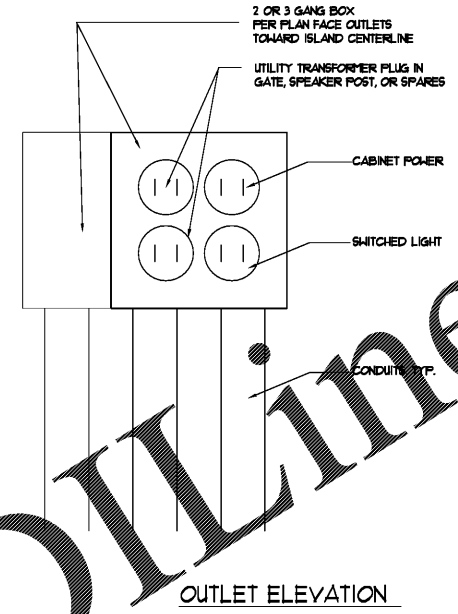
**(C) TIRE PASS BARRIER ELEVATION**  
SCALE: 1" = 1'-0"  
NOTE: ALL COMPONENTS PROVIDED BY LOVE'S & INSTALLED BY G.C.

LOCATE AIR LINES ON INBOARD SIDE OF CENTERLINE  
LOCATE ELECTRICAL ON OUTBOARD SIDE OF CENTERLINE

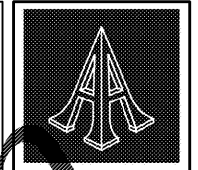


**LEGEND:**  
1" ELECTRICAL CONDUITS TYP. ⊕  
1/2" AIR PIPING TYP. ⊙

**(D) MEP ROUGH IN AT BAE PLATE**  
SCALE: 3" = 1'-0"



- TIRE PASS BARRIER - MECHANICAL**
- EQUIPMENT PROVIDED BY LOVE'S:**
- (1) MANUAL BARRIER ARM PEDESTAL
  - (1) ALUMINUM BARRIER ARM
  - (1) PAIR OF ELECTROMAGNET BRACKETS
  - (1) SLIDE CATCH
- EQUIPMENT PROVIDED BY G.C.:**
- (4) 5/8" x 6" WEDGE ANCHOR BOLTS TO MOUNT PEDESTAL TO DIESEL ISLAND BUMPER
- TIRE PASS BARRIER - ELECTRICAL**
- EQUIPMENT PROVIDED BY LOVE'S:**
- (1) ELECTROMAGNET
  - (2) 1/2" WIRE POWER SUPPLY
  - (2) WIRELESS RECEIVER/TRANSMITTER
  - (1) WIRELESS KEYCHAIN TRANSMITTER
  - (1) MANUAL PUSH BUTTON - ENFORCER SP-1000
  - (1) 24VDC POWER SUPPLY FOR MANUAL PUSH BUTTON - ENFORCER ST-1V12-S2.02
- EQUIPMENT PROVIDED BY G.C.:**
- (1) 1G BELL BOX 3-3/4" HUB & SEALED COVER FOR MAGNET WIRING
  - USE 18ga/2c CABLE FOR MAGNET WIRING & PUSH BUTTON WIRING



**Pascal Aughtry & Associates, PC**  
405.463.3494  
Fax 405.463.3493  
837 East Bolton Road  
Oklahoma City, OK 73114  
pascal@pcan.com



**Love's Travel Stops**  
A NEW TRAVEL STOP  
STORE NO. 735  
CALHOUN, GA

Revisions:	
No.	Date

Project No.: LVS18735  
Date: 05-22-18  
Sheet No.: **SP-3.2**  
OF: 14

Order Plans @ www.ldilines.com