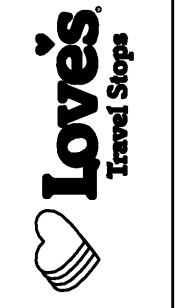


Pascal Aughtry & Associates, PC
 405.463.3494
 Fax 405.463.3493
 837 East Bolton Road
 Oklahoma City, OK 73114
 pascala@earthlink.net



A NEW TRAVEL STOP
 STORE NO. 735
 CALHOUN, GA



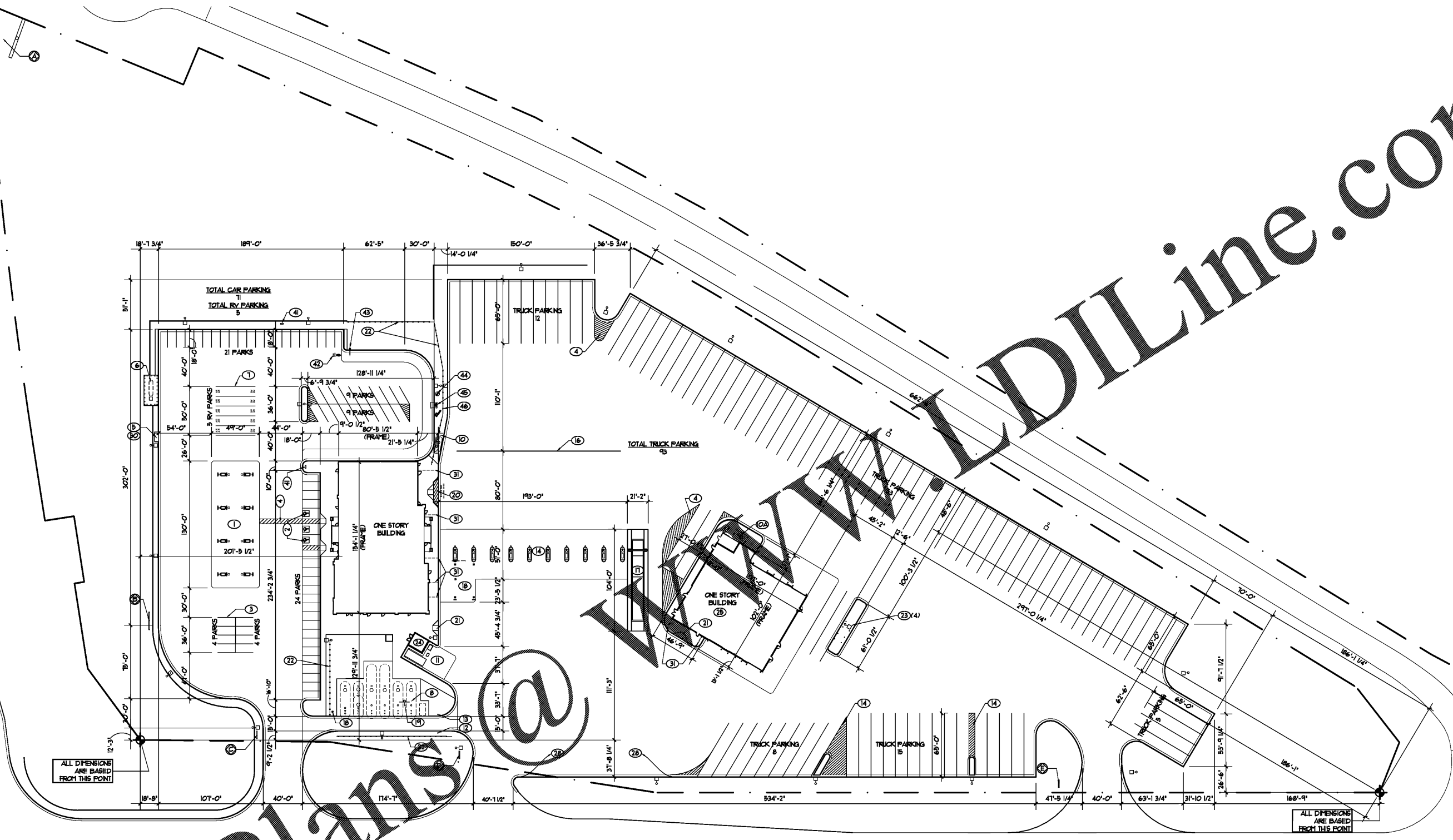
Revisions:	
No.	Date

Project No: LVS18735
 Date: 05-22-18

Sheet No:

SP-1

OF: 14



ALL DIMENSIONS ARE BASED FROM THIS POINT

ALL DIMENSIONS ARE BASED FROM THIS POINT

A SITE PLAN
 SCALE 1" = 40'

- NOTES:**
- ALL IMPROVEMENTS ARE PARALLEL OR PERPENDICULAR TO EAST 4 WEST PROPERTY LINES.
 - THE OWNER'S SIGN CONTRACTOR WILL INSTALL THE FOLLOWING SIGNS AND FOUNDATIONS: HI RISE SIGN, STREET SIGN, LOVE'S DIRECTIONAL SIGN(S), BUILDING WALL MOUNTED SIGNS, DRIVE THRU DIRECTIONAL SIGNS, -THE ELECTRICAL HOOK UP IS BY G.C.
 - REFER TO CIVIL DRAWINGS FOR PAVING TYPES.
 - G.C. & SIGN CONTRACTOR TO FIELD VERIFY LOCATIONS & ORIENTATIONS OF FREE-STANDING SITE SIGNS WITH OWNER PRIOR TO INSTALLATION.
 - PARKING LOT STRIPING COLOR TO BE YELLOW UNLESS OTHERWISE NOTED. TRUCK PULL-UP STRIPE COLOR TO BE WHITE.
 - ALL PAINTED PARKING LOT SIGNAGE/STRIPING TO BE VERIFIED WITH LOVE'S FIELD CONSTRUCTION MANAGER PRIOR TO INSTALLATION.
 - TOTAL AREA OF PROPERTY - 14.18 ACRES

KEYED NOTES:	DETAIL	KEYED NOTES:	DETAIL	KEYED NOTES:	DETAIL	KEYED NOTES:	DETAIL	KEYED NOTES: SITE SIGNAGE	RE: SIGN VENDOR
1 AUTO ISLANDS AND CANOPY	RE: SP-2 & SP-2.1	20 OIL-WATER SEPARATOR TIRE SHOP	RE: SP-6.1	21 5' WIDE RECESSED 3-WAY FLARED A.D.A. RAMP	RE: SP-5/J	40 NOT USED		3 HI-RISE SIGN BY OWNER	
2 HANDICAP PARKING SPACES AND RAMP	RE: SP-5/A	11 COMPACTOR ENCLOSURE	RE: SP-4/A	22 TREX SECLUSION FENCE	RE: SP-4/B	41 DRIVE-THRU DIRECTIONAL SIGN	RE: SP-1/A BY TENANT	4 4' x 8' DIRECTIONAL SIGN BY OWNER SOUTH SIDE	NORTH SIDE
3 4' WIDE PAINTED PARKING STRIPES (TYP.)		12 BOLLARD WITH HOOK - FREE END OF CHAIN TO BE HOOKED HERE	RE: SP-5/F	23 (4) 12' BOLLARDS	RE: SP-4/C SIM.	42 PAINTED DRIVE-THRU DIRECTIONAL ARROW	RE: SP-5/M	4 4' x 8' DIRECTIONAL SIGN BY OWNER SOUTH SIDE	NORTH SIDE
4 PAINTED DIAGONAL STRIPING AT 48" O.C.		13 BOLLARD WITH CHAIN - FIELD HELD ONE END OF CHAIN TO BOLLARD	RE: SP-5/F	24 YARD BUILDING	RE: SP-9	43 'HEADKNOCKER' CLEARANCE BAR	RE: SP-1/F	4 4' x 8' DIRECTIONAL SIGN BY OWNER SOUTH SIDE	NORTH SIDE
5 AIR-WATER ISLAND / R.V. DUMP	RE: SP-5/C	14 TRUCK ISLANDS AND CANOPY	RE: SP-3	25 TIRE SHOP	RE: YA-1 - YA-13	44 PREVIEW MENU BOARD	RE: SP-1/C	4 4' x 8' DIRECTIONAL SIGN BY OWNER SOUTH SIDE	NORTH SIDE
6 LP GAS TANK PAD	RE: SP-4/F	15 ELECTRICAL TRANSFORMER	RE: ELECTRICAL	26 NOT USED		45 ORDER POST	RE: SP-1/B	4 4' x 8' DIRECTIONAL SIGN BY OWNER SOUTH SIDE	NORTH SIDE
7 R.V. PARKING SPACES 40' x 10' (TYP.) / AUTO PARKING SPACES 18' x 9' (TYP.) UNLESS NOTED	RE: SP-5/N	16 12' WIDE PAINTED PULL-UP STRIPE (WHITE)		27 NOT USED		46 MENU BOARD	RE: SP-1/D		
8 FUEL UNDERGROUND STORAGE TANKS. RE: FUEL DRAWINGS		17 TRUCK SCALE BY OWNER		28 NO PARKING SIGN ON GALVANIZED METAL POST 30'-0" O.C. PAINT NO PARKING ON CURB FACE 20'-0" O.C.	RE: SP-4/D				
9 EXTERIOR M.D.P. ELECT. PANEL	RE: ELECTRICAL	18 POWER FOR TANKER TRUCK	RE: SP-4/E	29 8'-0" TALL CHAIN LINK FENCE HOLD TIGHT TO PROPERTY LINE					
10 OIL-WATER SEPARATOR DIESEL BAYS	RE: SP-6	19 'BIO FUEL ONLY' SIGN ON GALVANIZED METAL POST	RE: SP-4/D	30 AIR/WATER/RV DUMP SIGN	RE: SP-4/D				
		20 A.D.A. LOADING ZONE	RE: SP-5/H	31 SIDEWALK DRAINS	RE: SP-5/K				

Order Plans @ www.dline.com