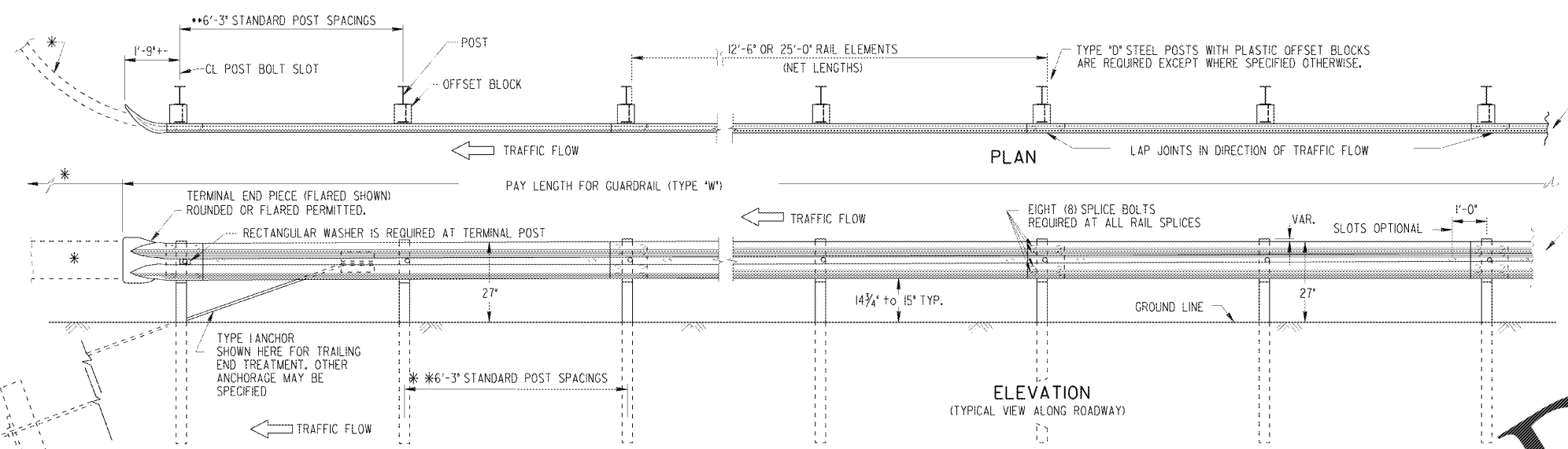
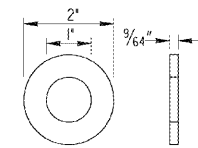


STATE	PROJECT NUMBER	SHEET NO.	TOTAL SHEETS
GA.			



SEE SEPARATE STANDARD OR OTHER DETAILS FOR REQ'D. ANCHORAGES.

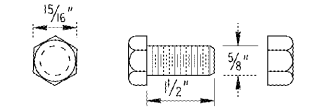


TYPE A WASHER (GALV.)

IF SLOTS IN SPECIAL END SHOE ARE 3" LONG TP. A WASHERS ARE REQ'D UNDER SPLICE BOLT HEADS & UNDER NUTS WITH 2" LONG SPLICE CONNECTIONS. IF END SHOE SLOTS ARE 1/8" LONG, USE NORMAL SPLICE CONNECTIONS.

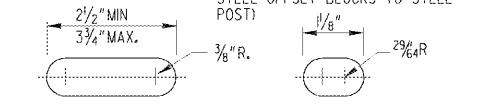
STEEL WASHER (GALV.)

(REQ'D. UNDER 5/8" HEX BOLT HEADS, UNDER HEX NUTS AND AS SPECIFIED)



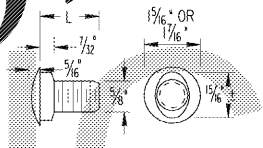
5/8" DIA. HEX BOLT & HEX NUT

(TO BE USED ONLY FOR ATTACHING STEEL OFFSET BLOCKS TO STEEL POST)

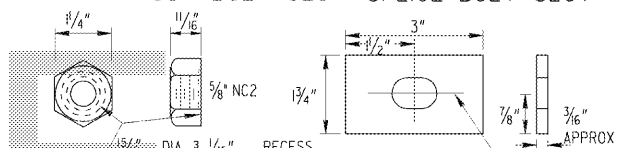


POST BOLT SLOT SPLICE BOLT SLOT

L	THREAD LENGTH
9 1/2"	1" MIN.
18"	1 1/2" MIN.
25"	2" MIN.

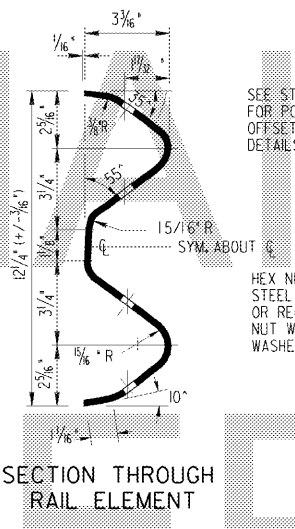


BUTTON HEAD (OR SPLICE) BOLT
(8 REQ'D PER SPLICE)

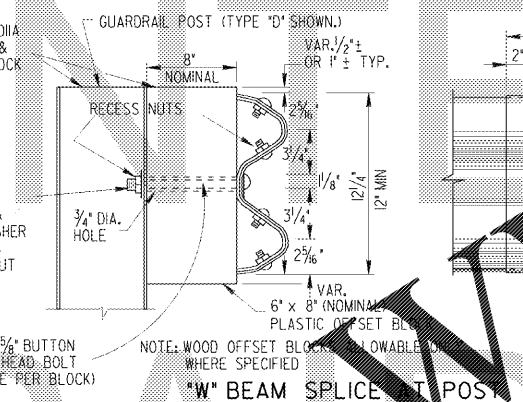


RECESS NUT RECTANGULAR WASHER (GALV.)
(FOR USE AT TERMINAL POST OR WHERE SPECIFIED)

NOTE:
* A PRECURVED GUARDRAIL SECTION WILL BE REQUIRED WHERE TYPE I ANCHORAGE IS PERMITTED AT GUARDRAIL TERMINAL IF TRAFFIC FLOW IS TWO-WAY. SEE APPLICABLE STANDARDS.
** REDUCED POST SPACINGS WILL BE REQUIRED AT TURNOUTS AROUND RADII, AT REDUCED OFFSETS TO FACE OF FIXED OBJECTS OR AT OTHER SPECIFIED LOCATIONS. SEE PLAN DETAILS OR APPLICABLE STANDARDS. PAYMENT FOR GUARDRAIL WILL INCLUDE THE ADDITIONAL POSTS REQUIRED.

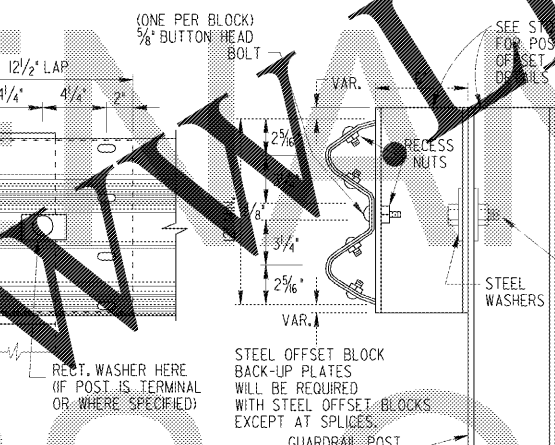


SECTION THROUGH RAIL ELEMENT



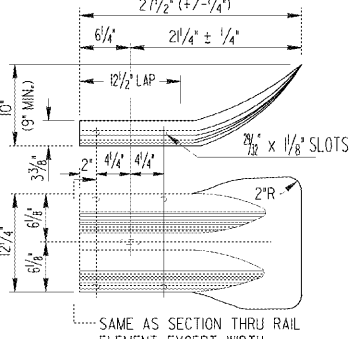
"W" BEAM SPLICE AT POST

NOTE: WOOD OFFSET BLOCKS ARE NOT ALLOWED WHERE SPECIFIED.

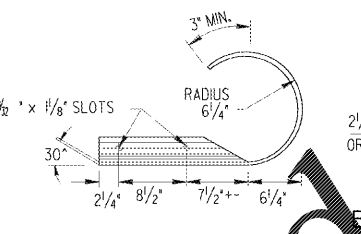


DOUBLE FACED GUARDRAIL (Type "W")

NOTE: STEEL OFFSET BLOCKS ARE NOT PERMITTED ON NEW INSTALLATIONS.



TERMINAL END PIECE (FLARED)

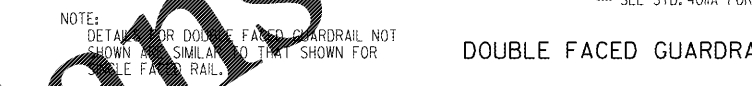


BUFFER END SECTION



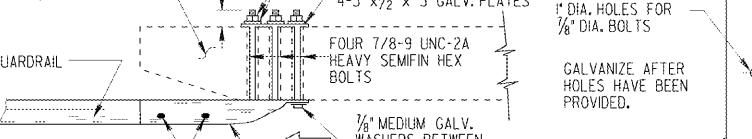
TERMINAL END PIECE (ROUNDED)

Order Plans



TYPICAL END SHOE CONNECTION

NOTE: THE "W" BEAM RAIL ELEMENT/END SHOE SPLICE SHALL BE LAPPED IN THE DIRECTION OF THE NEAREST TRAFFIC.



1/2" GALVANIZED STEEL PLATE

(TO BE USED WITH SPECIAL END SHOE CONNECTION UNDER NUTS & WASHERS ON BACK OF BRIDGE END POST OR BACK OF CONCRETE SIDE BARRIER) (FOUR 3" x 1/2" x 3" GALV. PLATES WITH 1" DIA. HOLE CENTERED, MAY BE USED AS AN ALTERNATE)

- GENERAL NOTES:
- SPECIFICATIONS: GEORGIA STANDARD CURRENT EDITION, AND SUPPLEMENTS THERETO.
 - NUTS, BOLTS, WASHERS, RAIL, TERMINAL SECTIONS, END SHOES, BACK-UP PLATES, END SECTIONS AND OTHER GUARDRAIL HARDWARE ARE IN ACCORDANCE WITH THE CURRENT ARTBA TECHNICAL BULLETIN NO. 268 UNLESS SPECIFIED OTHERWISE. DIMENSIONS FOR POSTS AND OFFSET BLOCKS WILL BE ACCORDING TO GA. STANDARD 401A.
 - FOR DETAILS OF GUARDRAIL ANCHORAGES, SEE APPLICABLE STANDARDS AND/OR CONSTRUCTION DETAILS.
 - FOR LOCATION OF GUARDRAIL SEE APPLICABLE LOCATION STANDARDS.
 - ALL STEEL HARDWARE COMPONENTS WILL BE GALVANIZED AFTER FABRICATION. GALVANIZING REPAIR COMPOUND (SEC. 645) WILL BE FIELD APPLIED TO ANY COATINGS DAMAGED.
 - WHEN GUARDRAIL IS REQUIRED ON CURVES WITH RADII LESS THAN 150', PRECURVED RAIL WILL BE REQUIRED.
 - PAYMENT FOR GUARDRAIL (Type "W") TO INCLUDE OFFSET BLOCKS, POST, BACK-UP PLATES WHERE REQUIRED, BOLTS, NUTS, WASHERS, TERMINAL SECTIONS, ADDITIONAL POST WHERE REQUIRED, & REMOVAL AND REPLACEMENT OF PORTIONS OF MEDIAN PAVING, SPILLWAYS, OR CATCH BASINS WHERE NECESSARY.
 - ALL DIMENSIONS ARE SUBJECT TO MANUFACTURING TOLERANCES.
 - STANDARD NET LENGTH OF RAIL ELEMENTS MAY BE EITHER 12'-6" OR 25'-0". THESE LENGTHS SHALL BE ARRANGED TO PROVIDE AS NEARLY AS POSSIBLE THE REQUIRED LENGTH FOR EACH INSTALLATION.

DATE		DEPARTMENT OF TRANSPORTATION STATE OF GEORGIA	
REVISION		STANDARD "W" BEAM GUARDRAIL	
NO SCALE		REV. & REDR. MAY, 1999	
DES.	(SUBMITTED) James H. Kennel	NUMBER 4010	
RETRACED	(APPROVED) State Road & Airport Design Engr.		
CHK.	(APPROVED) Tom L. Easley	CHIEF ENGINEER	