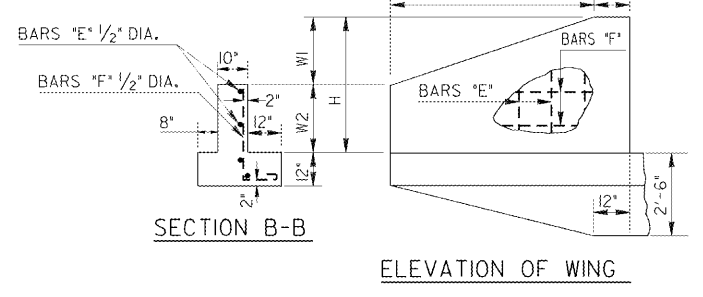
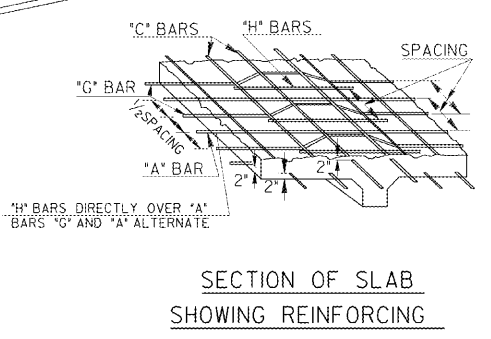
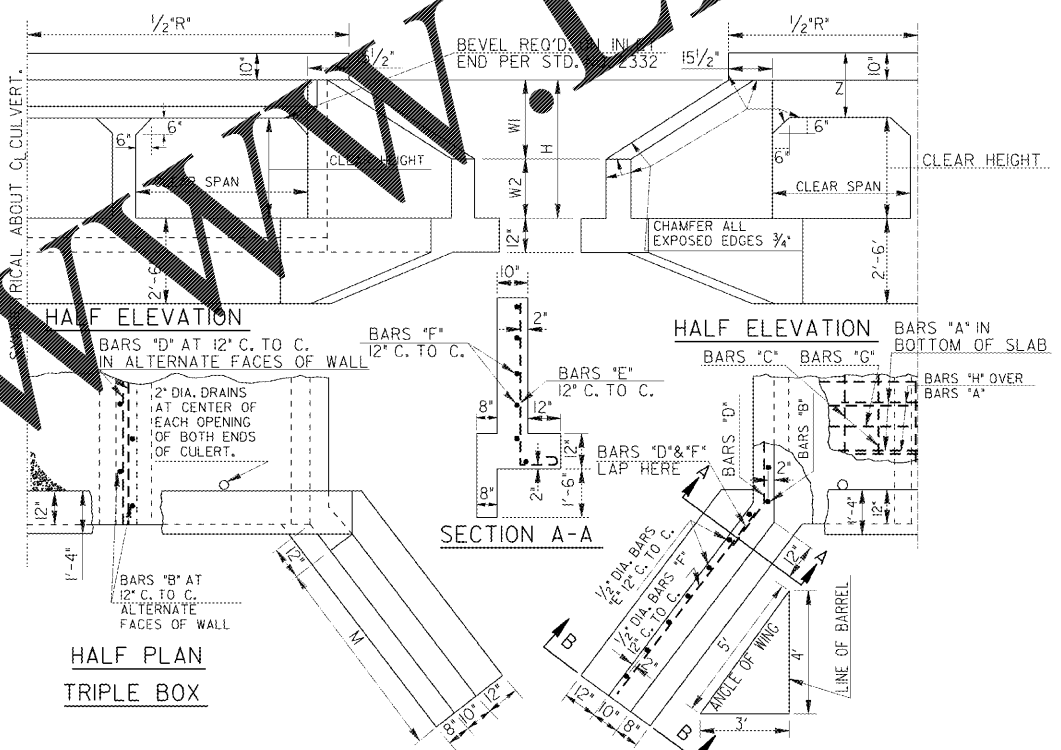
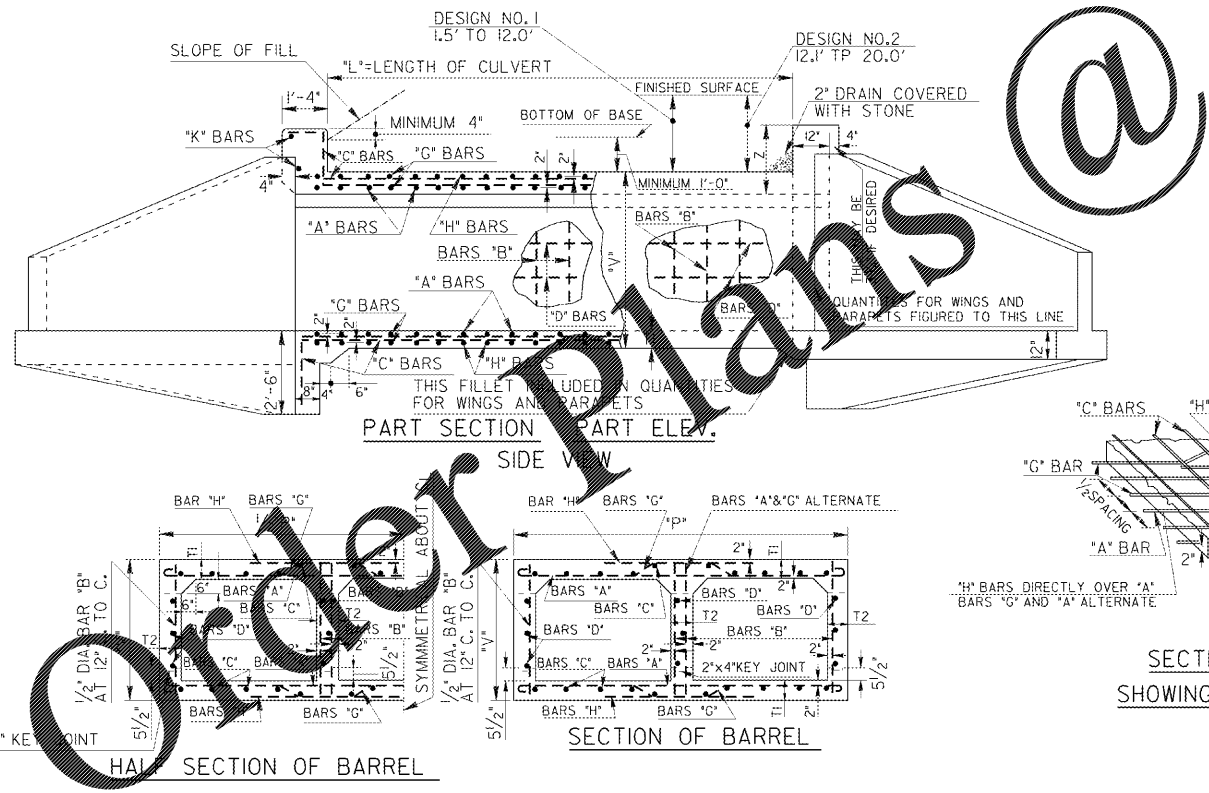
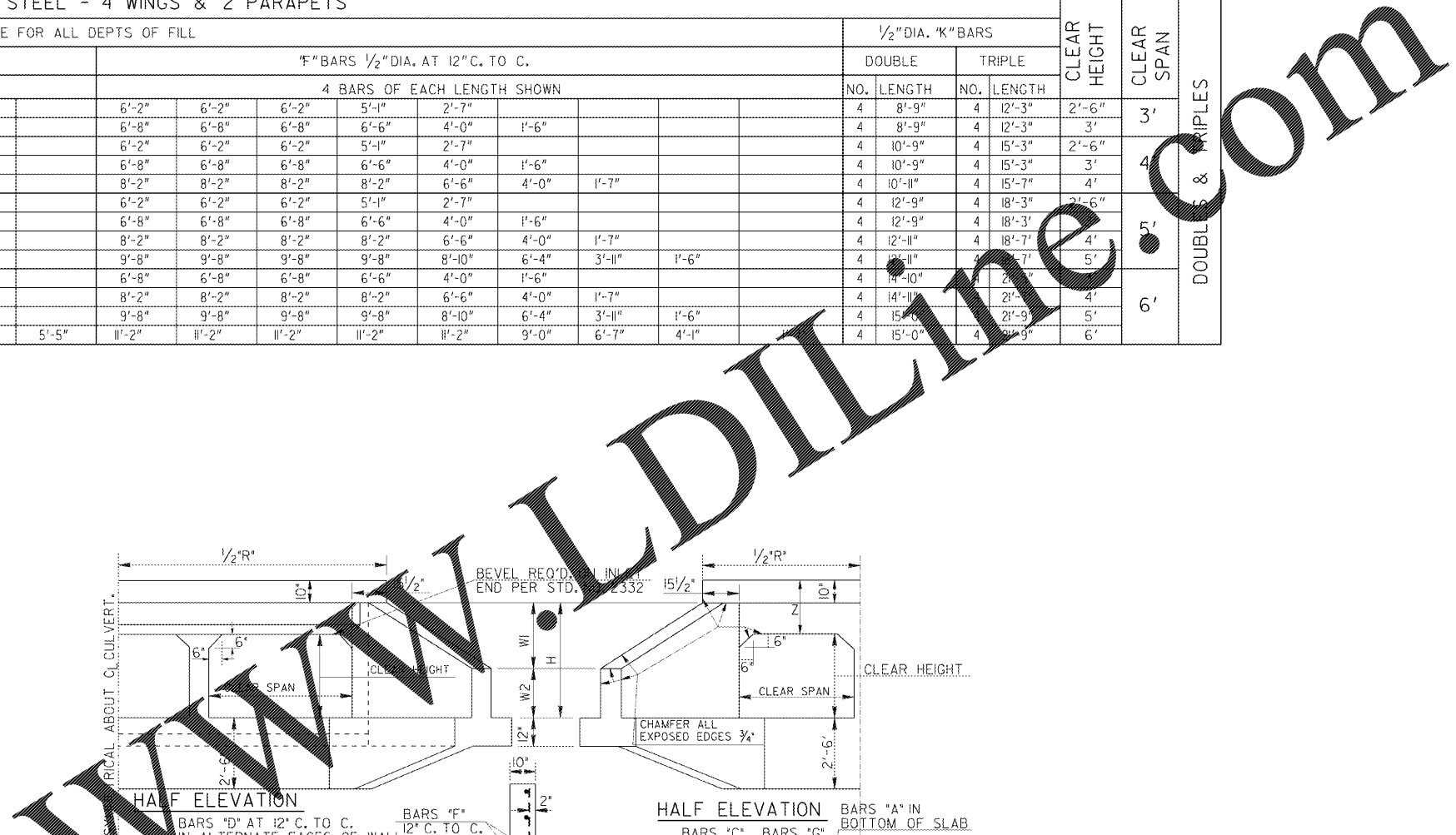


REINFORCING STEEL - 4 WINGS & 2 PARAPETS

DOUBLES & TRIPLES	CLEAR SPAN	CLEAR HEIGHT	SAME FOR ALL DEPTHS OF FILL																				CLEAR HEIGHT	CLEAR SPAN	DOUBLES & TRIPLES				
			"E" BARS 1/2" DIA. AT 12" C. TO C.										"F" BARS 1/2" DIA. AT 12" C. TO C.													1/2" DIA. "K" BARS			
			4 BARS OF EACH LENGTH SHOWN										4 BARS OF EACH LENGTH SHOWN													NO.	LENGTH	NO.	LENGTH
3'	2'-6"	5'-10"	5'-9"	5'-4"	5'-0"	4'-7"	4'-2"	3'-9"													4	8'-9"	4	12'-3"	2'-6"	3'			
	3'	6'-5"	6'-4"	5'-11"	5'-7"	5'-2"	4'-9"	4'-4"													4	8'-9"	4	12'-3"	3'				
4'	2'-6"	5'-10"	5'-9"	5'-4"	5'-0"	4'-7"	4'-2"	3'-9"													4	8'-9"	4	12'-3"	2'-6"	4'			
	3'	6'-5"	6'-4"	5'-11"	5'-7"	5'-2"	4'-9"	4'-4"													4	10'-9"	4	15'-3"	3'				
5'	4'	7'-5"	7'-4"	6'-11"	6'-7"	6'-2"	5'-9"	5'-4"	4'-11"	4'-6"											4	10'-11"	4	15'-7"	4'	5'			
	2'-6"	5'-10"	5'-9"	5'-4"	5'-0"	4'-7"	4'-2"	3'-9"													4	12'-9"	4	18'-3"	2'-6"				
	3'	6'-5"	6'-4"	5'-11"	5'-7"	5'-2"	4'-9"	4'-4"													4	12'-9"	4	18'-3"	3'				
6'	4'	7'-5"	7'-4"	6'-11"	6'-7"	6'-2"	5'-9"	5'-4"	4'-11"	4'-6"											4	12'-11"	4	18'-7"	4'	6'			
	5'	8'-6"	8'-4"	7'-11"	7'-6"	7'-2"	6'-9"	6'-4"	5'-11"	5'-6"	5'-1"										4	12'-11"	4	18'-7"	5'				
	3'	6'-5"	6'-4"	5'-11"	5'-7"	5'-2"	4'-9"	4'-4"													4	14'-10"	4	21'-9"	4'				
6'	4'	7'-5"	7'-4"	6'-11"	6'-7"	6'-2"	5'-9"	5'-4"	4'-11"	4'-6"											4	14'-11"	4	21'-9"	4'	6'			
	5'	8'-6"	8'-4"	7'-11"	7'-6"	7'-2"	6'-9"	6'-4"	5'-11"	5'-6"	5'-1"										4	15'-0"	4	21'-9"	5'				
6'	5'	8'-6"	8'-4"	7'-11"	7'-6"	7'-2"	6'-9"	6'-4"	5'-11"	5'-6"	5'-1"										4	15'-0"	4	21'-9"	5'	6'			
	6'	9'-6"	9'-4"	9'-0"	8'-7"	8'-2"	7'-9"	7'-4"	7'-0"	6'-7"	6'-2"	5'-9"	5'-5"	11'-2"	11'-2"	11'-2"	11'-2"	11'-2"	11'-2"	9'-0"	6'-7"	4'-1"	4'-1"	6'					



DEPARTMENT OF TRANSPORTATION STATE OF GEORGIA	
STANDARD REINFORCED CONCRETE BOX CULVERTS DOUBLE 3'x2'-6" TO TRIPLE 6'x6' FOR DEPTHS OF FILL UP TO 20' FT.	
NO SCALE REV. & REDR. NOV., 2001	
DESIGNED R.B.D.	(SUBMITTED) James A. Kaul
TRACED	STATE ROAD & AIRPORT DESIGN ENGINEER
CHECKED G.P. G...	(APPROVED) Paul L. ...
REVISED	CHIEF ENGINEER
DATE	NUMBER 2325
REVISION	SHEET 2 OF 2