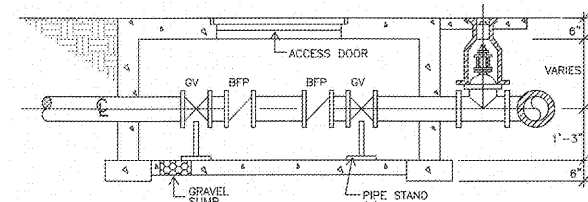
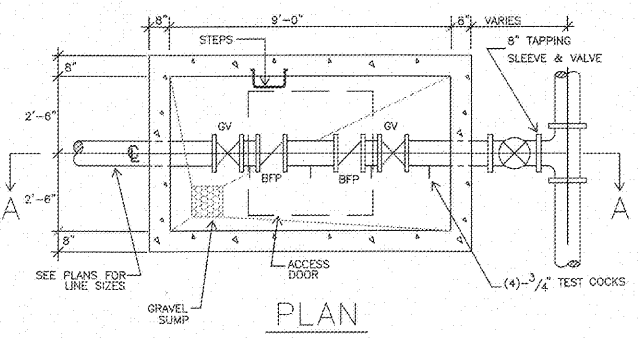


1. ALL BLOCKS MUST BEAR AGAINST UNDISTURBED EARTH.
2. ARROWS INDICATE DIRECTION OF THRUST.
3. ALL FITTINGS SHOWN IN PLAN EXCEPT VERTICAL BEND.
4. CONCRETE COMPRESSIVE STRENGTH SHALL BE MINIMUM 3000 PSI AT 28 DAYS.

PROVIDE MINIMUM BEARING AREA IN S.F. AS FOLLOWS  
 BASED ON 150 PSI TEST PRESSURE AND 2000 PSF SCH.  
 BEARING (UNLESS OTHERWISE DETAILED)

PIPE SIZE	TEE DEADENDS	11 1/4" BEND	22 1/2" BEND	45° BEND	90° BEND
4"	1.0	0.5	0.5	0.8	1.3
6"	2.2	0.5	0.8	1.5	3.0
8"	3.8	0.8	1.5	2.9	5.3
10"	6.0	1.2	2.3	4.5	8.4
12"	8.5	1.7	3.3	6.5	12.1
14"	11.5	2.3	4.5	8.9	16.4
16"	15.2	3.0	5.6	11.5	21.4

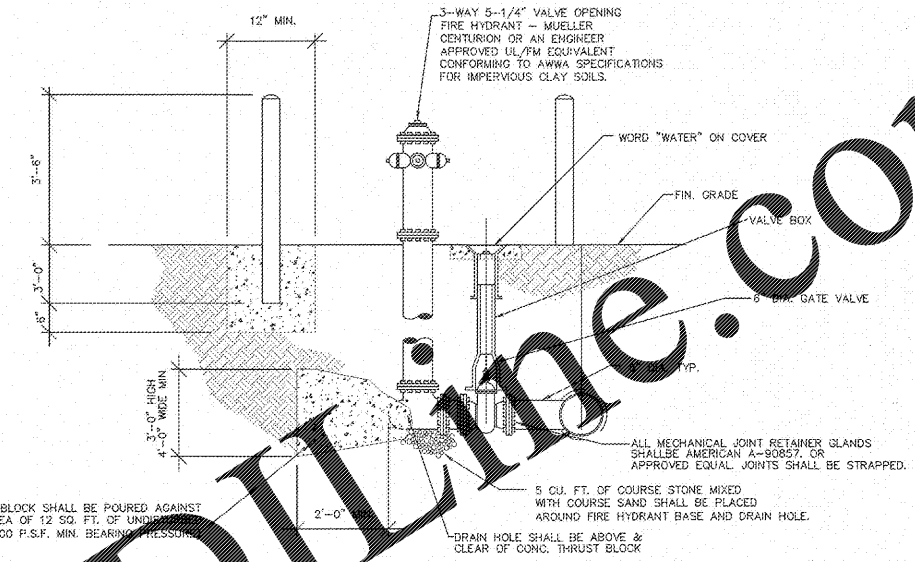
THRUST BLOCK DETAIL  
N.T.S.



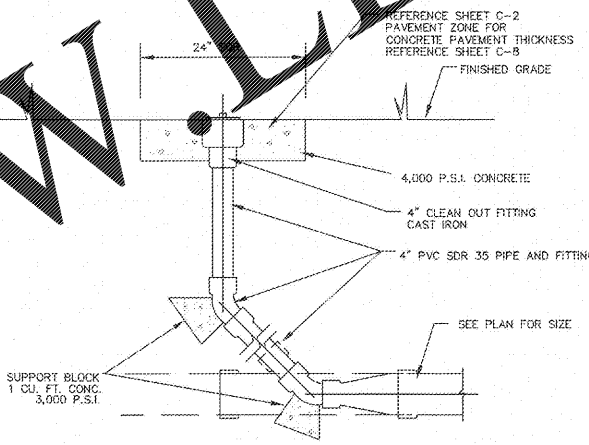
SECTION A-A

- NOTES:
1. ACCESS DOOR - 61LCO ALUMINUM DOUBLE LEAF (JD-24L) 4'x4'
  2. COVER - 6" STEEL REINFORCED CONCRETE
  3. WALLS - 6" STEEL REINFORCED CONCRETE (6"-6" MIN. INSIDE)
  4. STEPS - 12" WIDE STEP EXTENDING 4" FROM WALL AT 12" VERT.
  5. BOTTOM - 4" CONCRETE SLOPED TO GRAVEL SUMP ON 4" OF NO. 57 COMPACTED STONE.

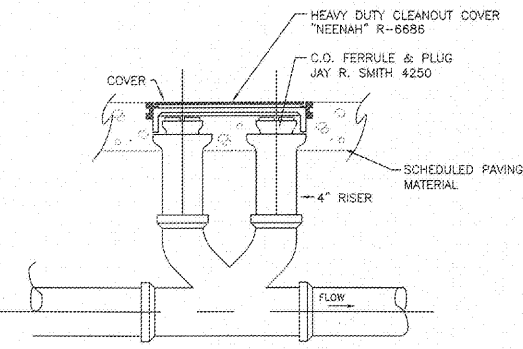
DOUBLE CHECK BACKFLOW PREVENTER  
NO SCALE



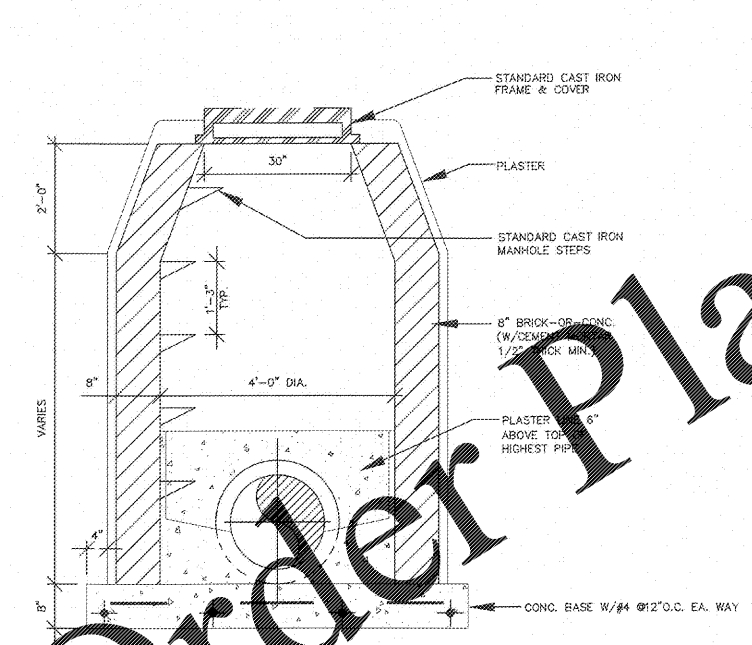
FIRE HYDRANT DETAIL  
NO SCALE



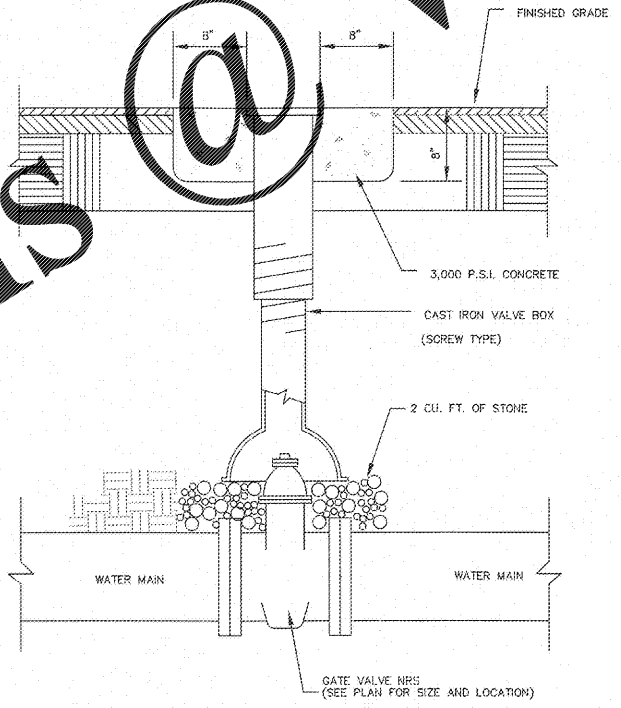
CLEAN OUT DETAIL  
N.T.S.



2-WAY CLEAN OUT DETAIL  
N.T.S.



MANHOLE JUNCTION BOX DETAIL  
N.T.S.



TRENCH & BEDDING DETAIL  
N.T.S.

NOTES:

1. BEDDING MATERIALS SHALL BE CLASS I, II, OR III MATERIALS AS DEFINED IN TABLE 1, ASTM D-2321. INSTALLATION OF THESE MATERIALS SHALL BE AS PER TABLE 2.
2. HAUNCH MATERIALS SHALL BE CLASS I, II, OR III PER D-2321, TABLE 2.
3. INITIAL BACKFILL MATERIALS SHALL BE CLASS I, II, OR III MATERIALS AS REQUIRED ABOVE, RESTRICTED AS PER ASTM D-2321, TABLE 2.
4. MINIMUM TRENCH WIDTHS (AS REQUIRED BY ASTM D-2321), ARE AS FOLLOWS:

WIDTH, CPP	MIN. TRENCH
8"	25"
10"	27"
12"	30"
15"	34"
18"	38"
24"	48"
30"	66"
36"	78"
42"	83"
48"	89"

A LESSER TRENCH WIDTH WILL BE PERMITTED ONLY WHERE IT IS DETERMINED THE CONTRACTOR CAN UTILIZE EQUIPMENT CAPABLE OF MEETING THE REQUIRED INSTALLATION DENSITIES.

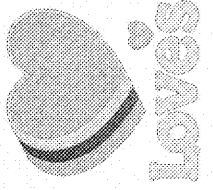
5. WHERE THE TRENCH BOTTOM IS UNSTABLE, CONTRACTOR SHALL EXCAVATE TO A DEPTH AS REQUIRED BY THE ENGINEER AND REPLACE AS AN ALTERNATE, TRENCH BOTTOM MAY BE STABILIZED USING A GEOFABRIC.



THIS DRAWING IS NOT VALID WITHOUT AN ORIGINAL BLUE INK SIGNATURE AND ORIGINAL HANDWRITTEN DATE OF A LICENSED PROFESSIONAL ENGINEER.

UTILITY DETAILS

LOVE'S TRAVEL STOP  
 I-75 EXIT 310 @ UNION GROVE ROAD  
 CALHOUN, GEORGIA



1031 - Calhoun GA I-75 exit 310@Union Grove Road, Details & Specs.dwg, 5/21/2018 4:47:25 PM, Ductyn, copyright Resource Consulting, LLC



Know what's below.  
 Call before you dig.