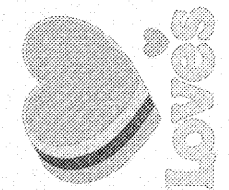
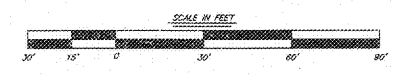
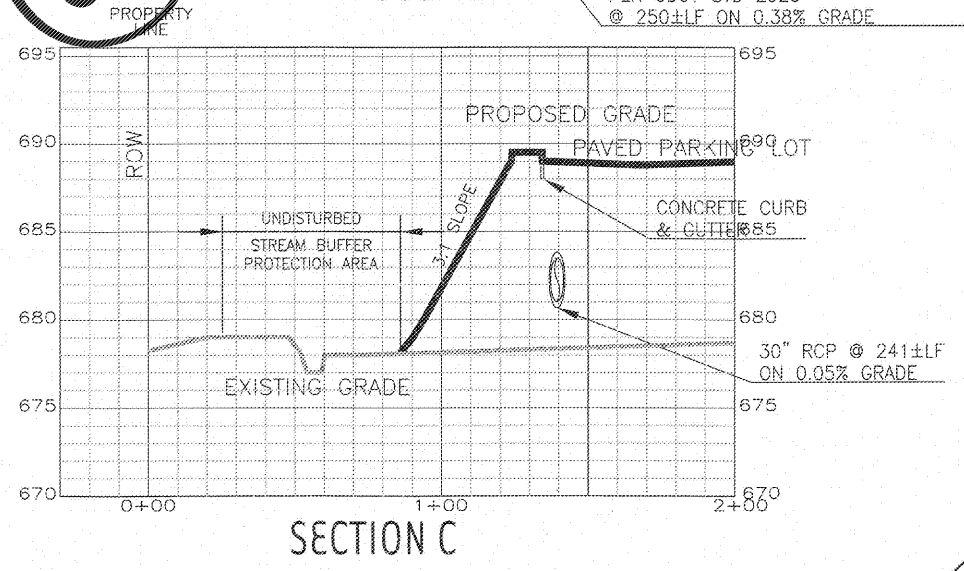
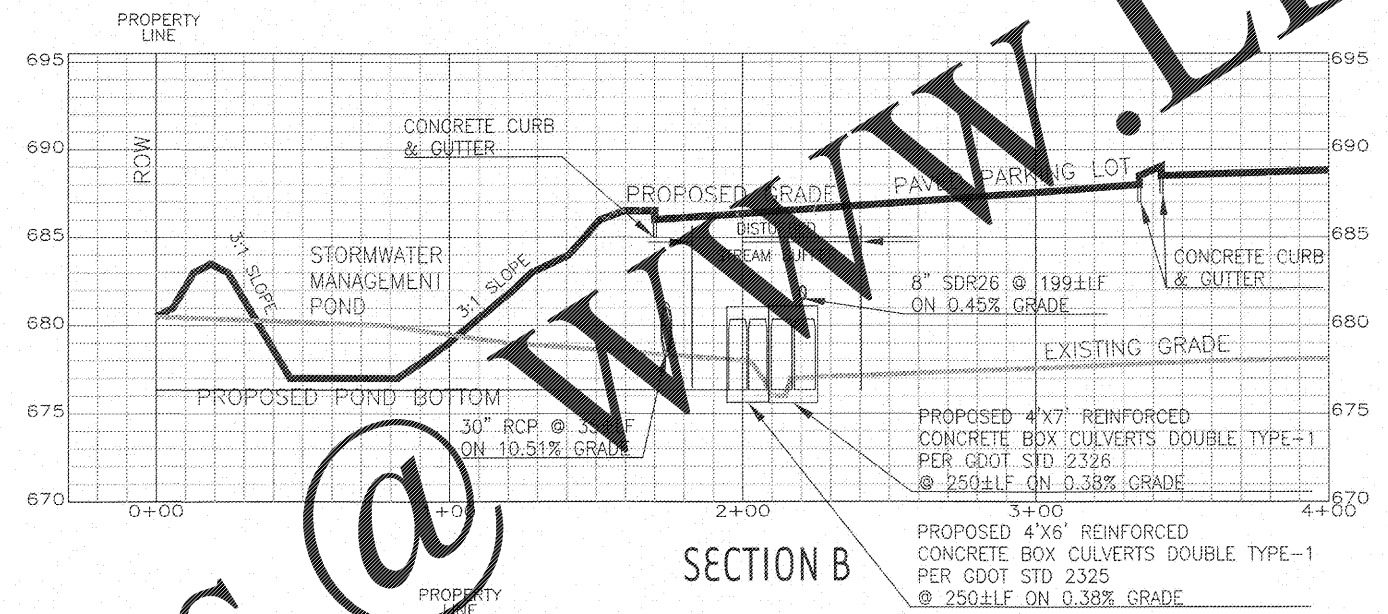
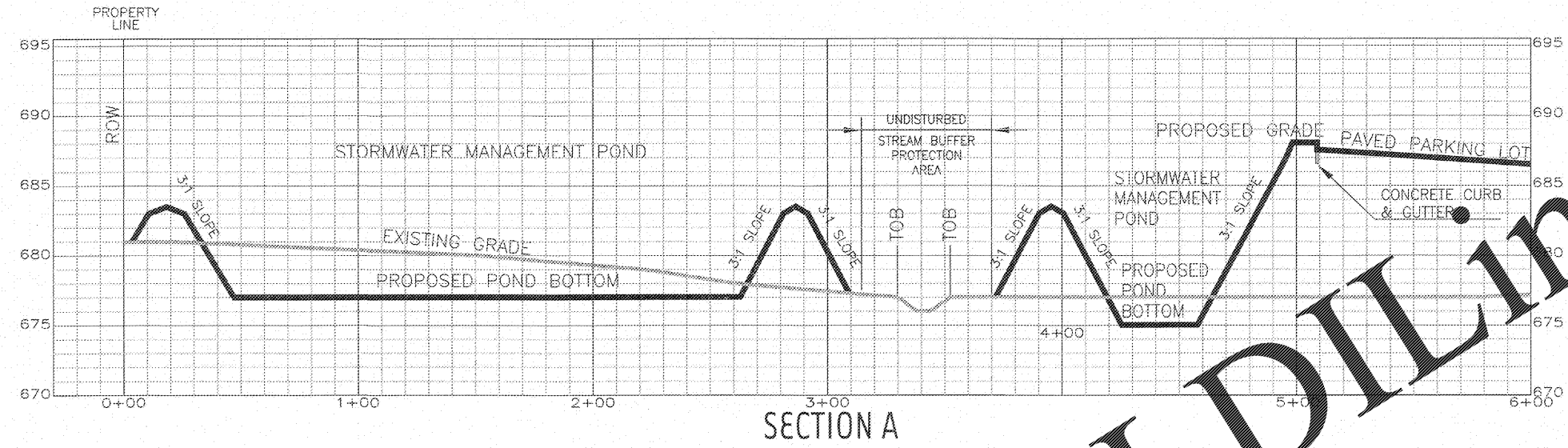


**LOVE'S TRAVEL STOP**  
 I-75 EXIT 310 @ UNION GROVE ROAD  
 CALHOUN, GEORGIA



**WET 3**



THIS DRAWING IS NOT VALID WITHOUT AN ORIGINAL BLUE INK SIGNATURE AND ORIGINAL HANDWRITTEN DATE OF A LICENSED PROFESSIONAL ENGINEER.

SECTIONS

**Order Plans**

