

Pascal Aughtry & Associates, PC

405.463.3494  
 Fax 405.463.3493  
 837 East Briston Road  
 Oklahoma City, OK 73114  
 pascala@earthlink.net



A NEW TRAVEL STOP  
 STORE NO. 735  
 CALHOUN, GA



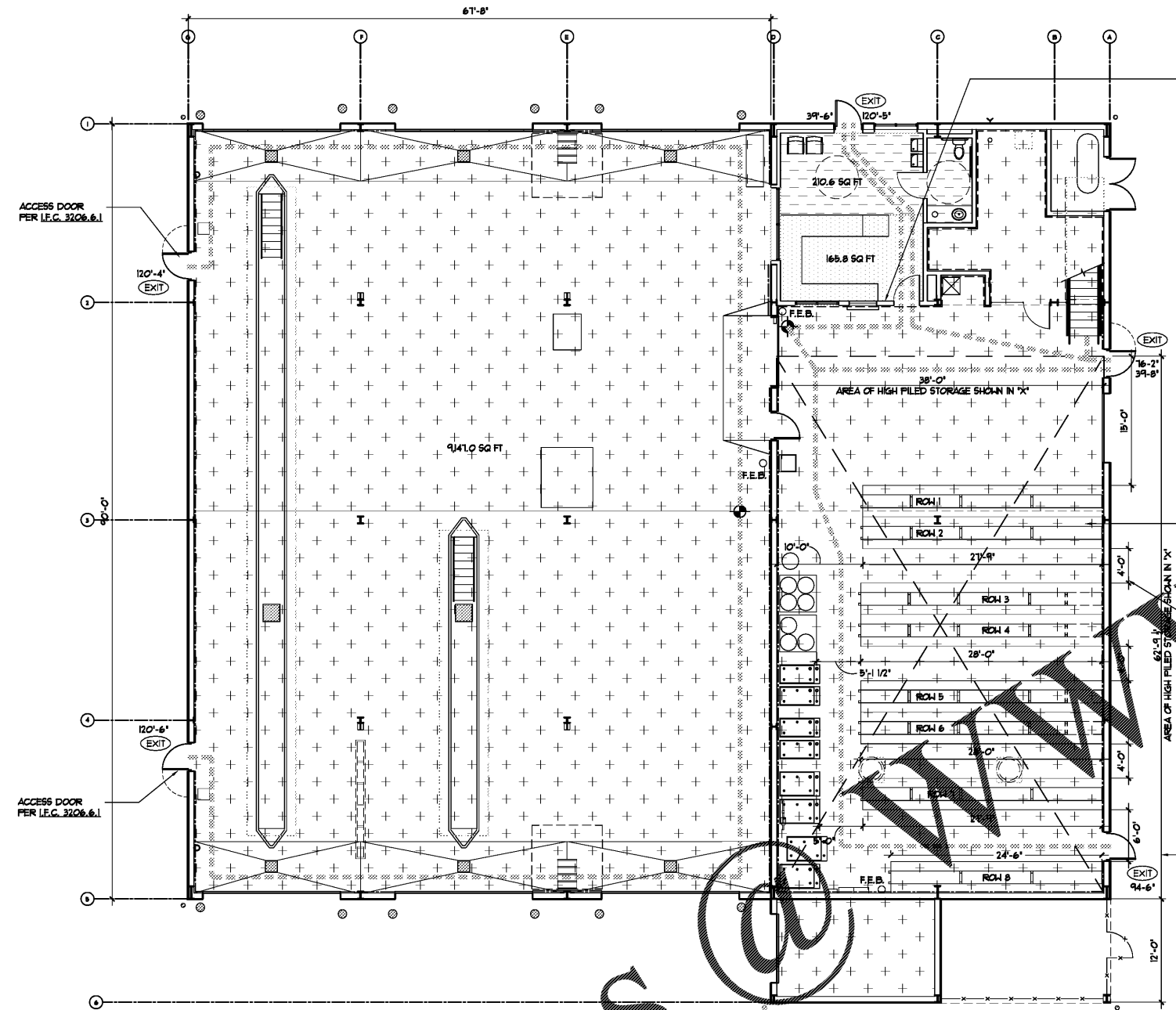
Revisions:	
No.	Date

Project No.: LVS18735  
 Date: 05-22-18

Sheet No.:

**ALSP-2**

OF: 2



KEY PAD DOOR ACCESS  
 PER I.F.C. 3206.2  
 (OPTION 1 - NONE REQUIRED)

**I.F.C. 3206.2**

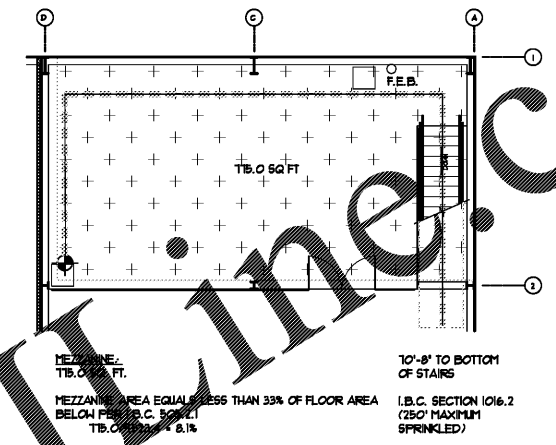
FIRE DETECTION SYSTEM  
 PER I.F.C. 3206.9  
 (OPTION 1 - NONE REQUIRED)

DRAFT CURTAINS I.F.C. 3206.2  
 I.B.C. TABLE 90.3 HIGH PILED STORAGE  
 HIGH HAZARD COMMODITIES -  
 (OPTION 1 - NONE REQUIRED)

SMOKE & HEAT REMOVAL  
 PER I.F.C. 3206.1  
 I.B.C. TABLE 90.3 HIGH HAZARD  
 COMMODITIES  
 (OPTION 1 - NONE REQUIRED)

AREA OF HIGH PILED STORAGE  
 (RACKS & 44" MIN. AISLE  
 EQUALS LESS THAN 2,800 CU. FT.  
 PER I.F.C. TABLE 3206.2  
 HIGH HAZARD - NON-PUBLIC ACCESS (OPTION  
 INTERIOR AREA 38'-0" X 62'-0" = 2,356.4 SQ. FT.

I.F.C. 3206.9.1.2  
 AREA OF SPRINKLED BUILDING  
 44" MIN. AISLE WIDTH  
 (48" PROVIDED)



VOLUME OF BUILT TIRE STORAGE EQUALS LESS THAN  
 20,000 CU. FT. PER I.B.C. 903.2.9.2  
 (SPRINKLER PROVIDED)

4'-0" DEEP X 27'-9" LONG X 15'-6" TALL = 1,720.5 CU. FT.  
 X 3 ROWS  
 5,161.5 CU. FT.

4'-0" DEEP X 28'-0" LONG X 15'-6" TALL = 1,136.0 CU. FT.  
 X 4 ROWS  
 4,544.0 CU. FT.

4'-0" DEEP X 24'-6" LONG X 15'-6" TALL = 1,514.0 CU. FT.  
 X 1 ROWS  
 1,514.0 CU. FT.

TOTAL: 13,624.5 CU. FT.

**LIFE SAFETY PLAN**  
 SCALE 1/8" = 1'-0"



PROJECT DATA- 2012 INTERNATIONAL BUILDING CODE	
<b>BUILDING AREA:</b>	<b>1ST FLOOR BUSINESS</b> 9,141.0 SQ. FT. <b>1ST FLOOR MERCANTILE</b> 1,100.6 SQ. FT. <b>MEZZANINE STORAGE</b> 1,165.9 SQ. FT. <b>TOTAL:</b> 11,407.5 SQ. FT.
<b>FIRE PROTECTION:</b>	SPRINKLED PER I.F.C. 3206.2 NON-PUBLIC ACCESSIBLE (OPTION 1)
<b>APPLICABLE BUILDING CODES:</b>	2012 INTERNATIONAL BUILDING CODE 2012 UNIFIED FIRE SAFETY CODE 2012 INTERNATIONAL PLUMBING CODE 2012 INTERNATIONAL MECHANICAL CODE 2012 INTERNATIONAL ELECTRICAL CODE
<b>OCCUPANCY CLASSIFICATION (SECT. 302.0):</b>	NEW CONSTRUCTION S-1 - STORAGE M - MERCANTILE B - BUSINESS
<b>CONSTRUCTION TYPE (SECT. 602.5):</b>	NEW CONSTRUCTION: TYPE V-B
<b>BUILDING HEIGHT AND AREA LIMITATIONS (TABLE 503):</b>	MAX. BUILDING HEIGHT IN FEET (STORIES): 40'-0" (1 STORIES) (60'-0" SPRINKLED, 2 STORIES) MAX. BUILDING AREA (PER FLOOR): 9,000 S.F. (19,000 S.F. SPRINKLED)
<b>AREA MODIFICATION (SECT. 506):</b>	NONE REQUESTED
<b>FIRE RESISTANCE RATING REQUIREMENTS FOR BUILDING ELEMENTS (TABLE 601):</b>	STRUCTURAL FRAME: 0 HRS. BEARING WALLS - INTERIOR: 0 HRS. BEARING WALLS - EXTERIOR: 0 HRS. NONBEARING WALLS AND PARTITIONS - EXTERIOR: 0 HRS. NONBEARING WALLS AND PARTITIONS - INTERIOR: 0 HRS. FLOOR CONSTRUCTION: 0 HRS. ROOF CONSTRUCTION: 0 HRS.
<b>BULK TIRE STORAGE (903.2.9.2):</b>	AUTOMATIC FIRE SPRINKLER REQUIRED IF THE ACTUAL VOLUME OF TIRES EXCEEDS 20,000 CU. FT. THE VOLUME STORED IS 13,624.5 CU. FT. (BUILDING IS SPRINKLED)
<b>NUMBER OF OCCUPANTS PER IBC 2012 1004.1.2:</b>	STORAGE (WAREHOUSE): 9,141.0 SQ. FT. / 900 OCCUPANTS 18.29 MEZZANINE (WAREHOUSE): 1,165.9 SQ. FT. / 900 OCCUPANTS 1.88 MERCANTILE: 1,100.6 SQ. FT. / 30 OCCUPANTS 1.02 BUSINESS: 1,658.9 SQ. FT. / 100 OCCUPANTS 1.66 <b>TOTAL: 28.85</b> <b>TOTAL OCCUPANTS: 29</b>
<b>EXIT ACCESS:</b>	TRAVEL DISTANCE 250 FEET (1016.2) (SPRINKLED) DEAD ENDS 50 FEET (1018.4) (SPRINKLED)
<b>EGRESS WIDTH (1008.1):</b>	MINIMUM CORRIDOR WIDTH (1018.2) 44" MINIMUM NUMBER OF EXITS (I.F.C. 1019.1) 2 EXITS EXITING BUILDING EGRESS WIDTH (1008.1) 32 INCHES
<b>INDOOR STORAGE ARRANGEMENT (I.F.C. 3206.2):</b>	TIRES STORED ON TREAD SHALL NOT BE MORE THAN 90 LN. FT. LONG

LEGEND	
	STORAGE
	MERCANTILE
	BUSINESS
	EXIT / EXIT DISCHARGE
	DISTANCE TO NEAREST EXIT
	MEANS OF EGRESS
	F.E.B. FIRE EXTINGUISHER & BRACKET