

| Luminaire Schedule |       |                |   |
|--------------------|-------|----------------|---|
| Symbol             | Label | Catalog Number | Description                                   |
| ⌞<br>□<br>⌞        | A     | EWEC930M2-3    | EW LED Area/Street Light with Type III Optics |
| ⌞<br>□<br>⌞        | B     | EWEC930M2-4    | EW LED Area/Street Light with Type IV Optics  |
| ⌞<br>□<br>⌞        | C     | EWEC930M-5     | EW LED Area/Street Light with Type V Optics   |
| ○                  | F     |                | Energywise LED Spot Light                     |

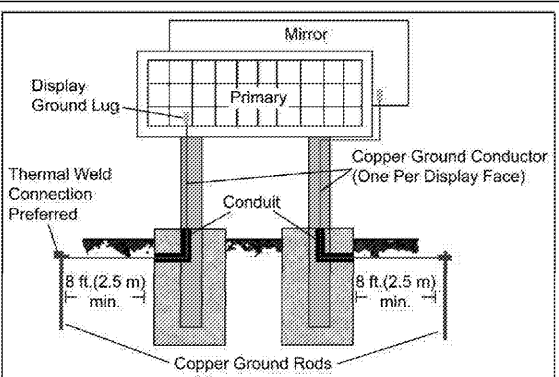
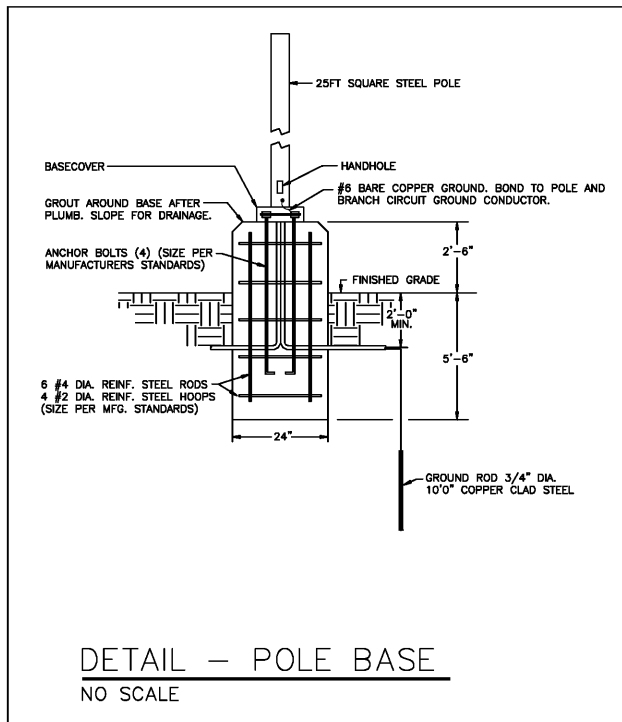


Figure 1: Grounding Detail Diagram

**Ground Rod Quantities**

This list gives the minimum number of ground rods needed for installation, based on quantity of displays and display configuration.

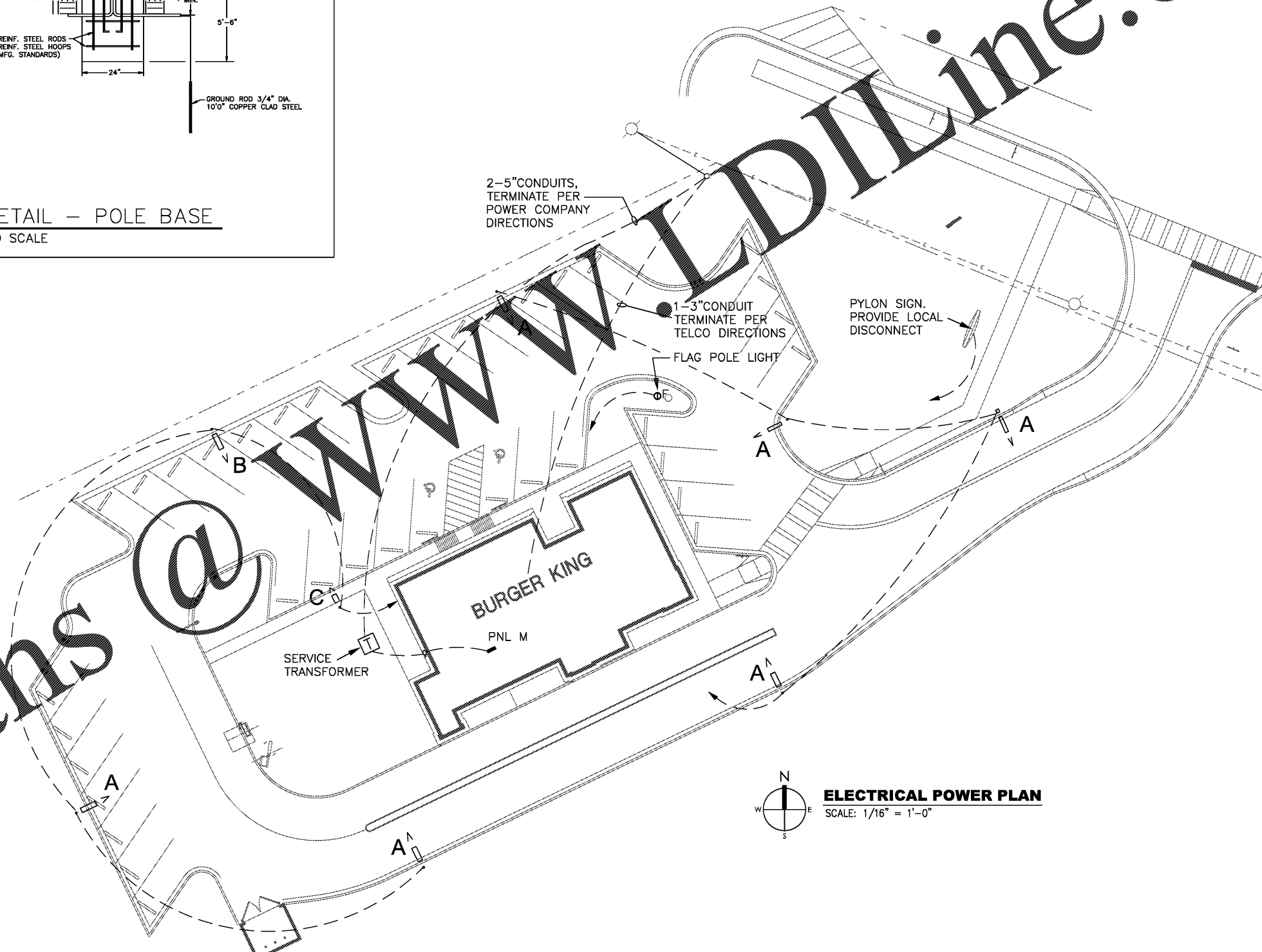
- Single Face, Qty. 1 = 1 Ground Rod
- Single Face (SF), Qty. 2 = 2 Ground Rods
- Two View (2V), Qty. 1 = 2 Ground Rods
- Double Face (DF), Qty. 1 = 2 Ground Rods

**Important Points About Grounding**

- Resistance to ground must be 20 ohms or less.
- Follow local and national codes.
- Support structure cannot be used as an earth-ground electrode.

A minimum of one grounding electrode for each display face is required.

DETAIL - SIGN GROUNDING  
NO SCALE



**ELECTRICAL POWER PLAN**  
SCALE: 1/16" = 1'-0"

Order Plans @ www.dline.com

PROJECT #16026.07  
RCC-60 20/20 MAGE, APRIL, 2015 DESIGN RELEASE  
**BURGER KING RESTAURANT**  
5300 U.S. Hwy 278  
Covington, GA



PREMIER KINGS, INC.  
5529 CARMICHAEL ROAD  
MONTGOMERY, ALABAMA 36117  
PHONE: (205) 322-1778  
LINDSEY@BKBALABAMA.COM

2126 Morris Avenue  
Birmingham, AL 35203  
Phone: (205) 322-1751  
Fax: (205) 322-1778  
email: info@hpluaha.com  
www.hpluaha.com

**james m. huckestein architect AIA**  
architecture • planning • interior design



PROJECT #16026.07  
RCC-60 20/20 MAGE, APRIL, 2015 DESIGN RELEASE  
**BURGER KING RESTAURANT**  
5300 U.S. Hwy 278  
Covington, GA