

DRAWING INFORMATION			
DATE	DESCRIPTION	BY	KM
05-13-18	FOR CONSTRUCTION		

**N - C - A**  
CONSULTANTS / GROUP  
4585 140TH AVE. NORTH, SUITE #1001  
CLEARWATER, FLORIDA  
PHONE: (877) 530-0078  
CALL NCA MARKETING FOR PRICING  
NCA JOB# 18-576

Shane R. Hamilton, P.E.  
1717 Howard Avenue  
Montgomery, AL 36117  
Tel: 205-332-1778  
Fax: 205-332-1778  
www.nca.com

CHECKED BY: JMH, ENH  
DATE: 05/22/18  
DRAWN BY: MRW  
DATE: 05/22/18  
NO. \_\_\_\_\_  
RELEASED FOR CONSTRUCTION & BID



PREMIER KINGS, INC.  
5529 CARMICHAEL ROAD  
MONTGOMERY, ALABAMA 36117  
PHONE: \_\_\_\_\_  
LINDSEY@BURGERKING.COM

2126 Morris Avenue  
Birmingham, AL 35203  
Phone: (205) 322-1751  
Fax: (205) 322-1778  
email: info@huckstein.com  
www.huckstein.com

James M. Huckstein  
architect AIA  
architecture • planning • interior design

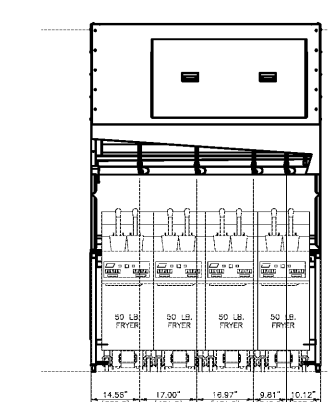
SHANE R. HAMILTON, P.E.  
1717 HOWARD AVENUE, SUITE 1001  
MONTGOMERY, ALABAMA 36117  
PHONE: (205) 332-1778  
FAX: (205) 332-1778  
WWW.NCA.COM

Shane R. Hamilton  
No. 10000  
1717 HOWARD AVENUE, SUITE 1001  
MONTGOMERY, ALABAMA 36117  
PHONE: (205) 332-1778  
FAX: (205) 332-1778  
WWW.NCA.COM

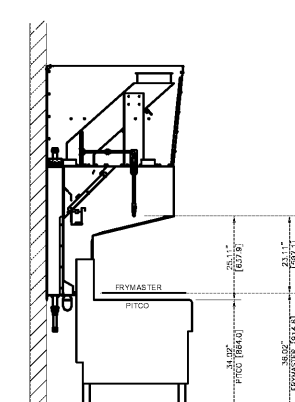
PROJECT # 18026.07  
RUC-60 20/20 IMAGE APRIL 2015 DESIGN RELEASE  
BURGER KING RESTAURANT

U.S. Hwy 278  
Covington, GA  
HOOD DETAILS

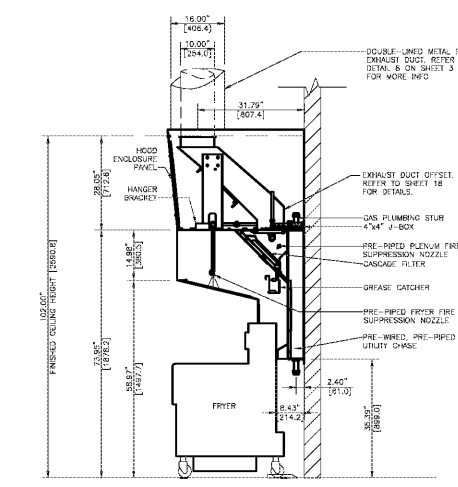
M-8



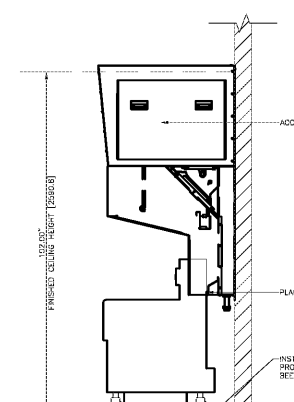
1 ANSUL FIRE SUPPRESSION PIPING DETAIL - OPTIONAL FRYER CONFIGURATION  
SCALE: NO SCALE



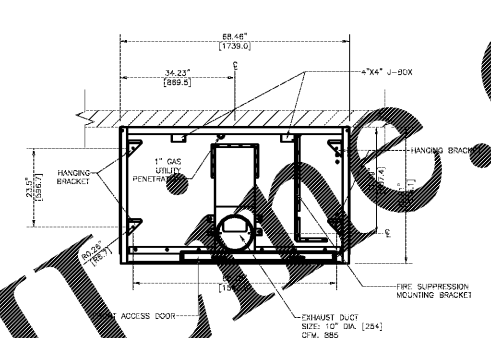
2 FRYER HOOD SECTION VIEW  
SCALE: NO SCALE



3 FRYER HOOD RIGHT END VIEW  
SCALE: NO SCALE

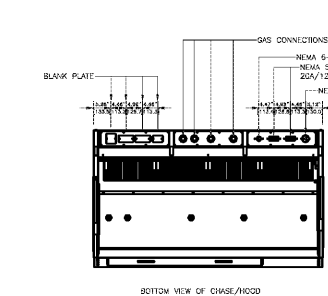


4 FRYER HOOD PLAN VIEW  
SCALE: NO SCALE

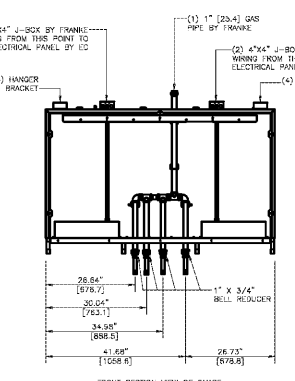


AMEREX PIPING PART NUMBERS	
DUCT NOZZLE	PART #16416
PLENUM NOZZLE	PART #11982
FUSIBLE LINK	PART #16227
FRYER NOZZLES	PART #11982

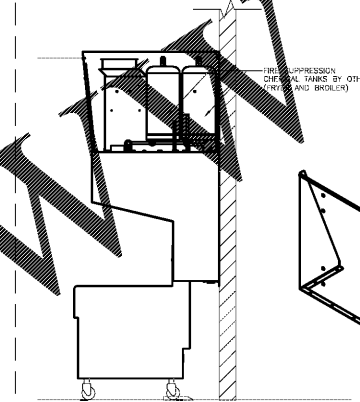
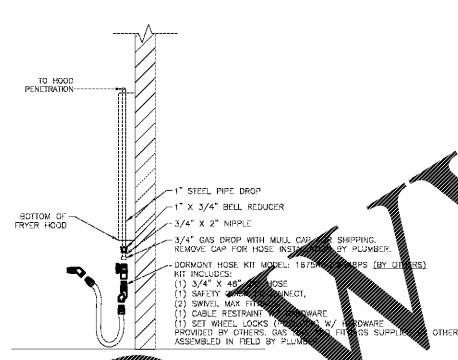
NOTES:  
- ALL FUSIBLE LINKS ARE 360°  
- ALL BLOW OFF CAPS ARE HIGH TEMP METAL, PART #79745  
- PIPE DROPS, NOZZLES AND SWIVEL ELBOWS FURNISHED AND INSTALLED BY THE FIRE SYSTEM CONTRACTOR.



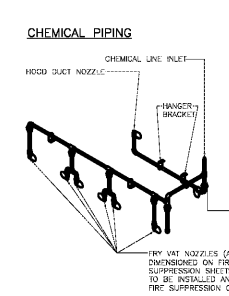
5 UTILITY DETAILS  
SCALE: NO SCALE



6 TYPICAL GAS FRYER UTILITY INSTALLATION  
SCALE: NO SCALE



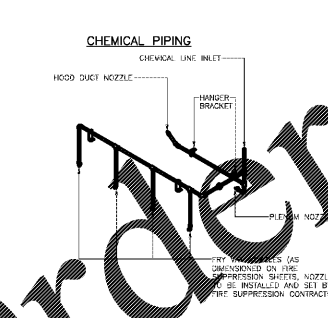
7 FIRE SYSTEM MOUNTING DETAIL  
SCALE: NO SCALE



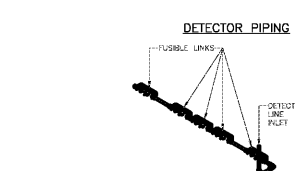
8 AMEREX FIRE SUPPRESSION ISOMETRIC DETAIL  
SCALE: NO SCALE

ANSUL PIPING PART NUMBERS	
DUCT NOZZLE	PART #4193372W
PLENUM NOZZLE	PART #4193351N
FUSIBLE LINK	PART #415742
FRYER NOZZLES	PART #419340245

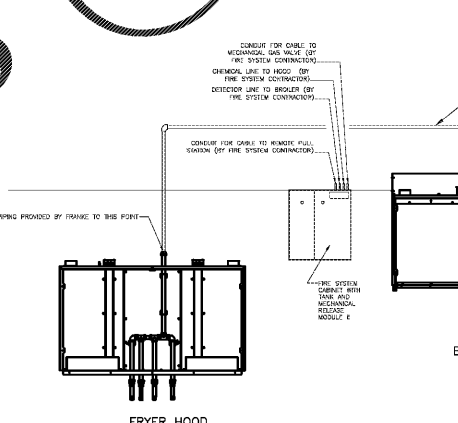
NOTES:  
- ALL FUSIBLE LINKS ARE 360°  
- ALL BLOW OFF CAPS ARE HIGH TEMP METAL, PART #12504  
- PIPE DROPS, NOZZLES AND SWIVEL ELBOWS FURNISHED AND INSTALLED BY THE FIRE SYSTEM CONTRACTOR.



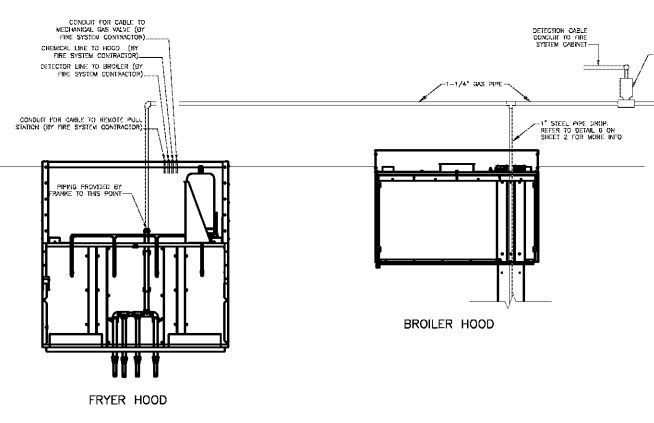
9 CHEMICAL PIPING  
SCALE: NO SCALE



10 FIRE SUPPRESSION EXTERNAL CONTROL BOX DETAIL  
SCALE: NO SCALE



11 FIRE SUPPRESSION INTERNAL CONTROL BOX DETAIL  
SCALE: NO SCALE



12 FIRE SUPPRESSION INTERNAL CONTROL BOX DETAIL  
SCALE: NO SCALE

Order Plans

© Copyright 2018- Drawings, specifications, notes, database, computer files, field data, and reports as instruments of service prepared by the Design of Record. As instruments of services, these items remain the property of the Design of Record, who shall retain all statutory and other reserved rights, including the copyright thereto. Any use, reproduction or changes to these documents without written consent of NCA Consultants is a violation of federal copyright laws.