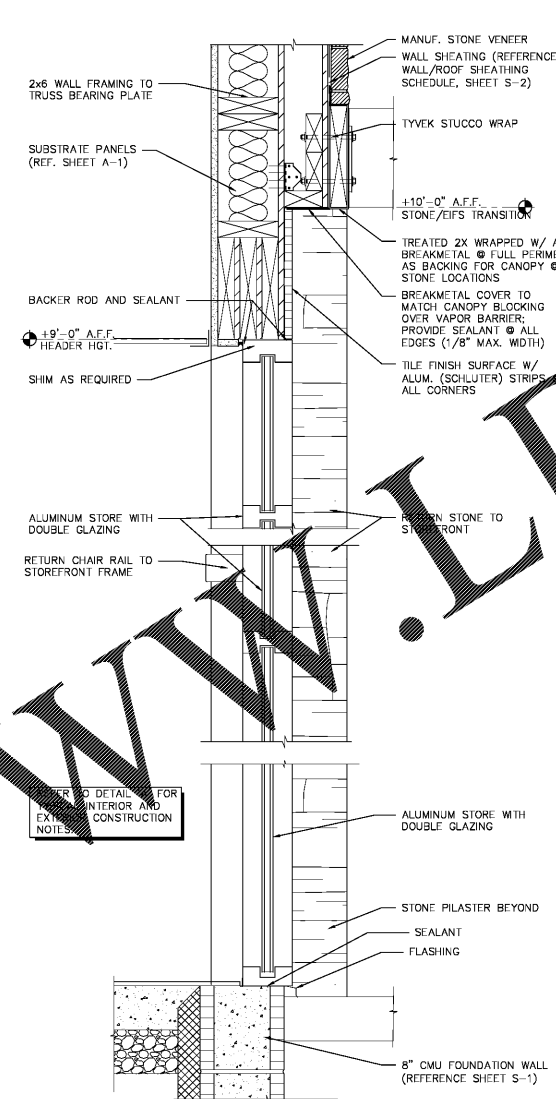
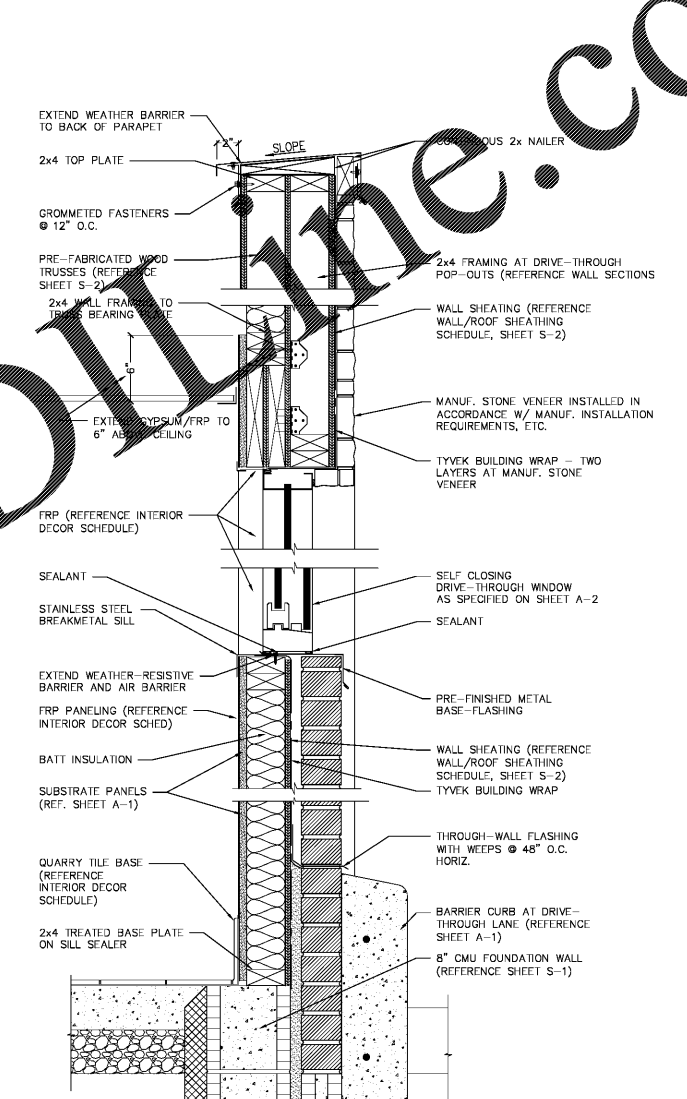


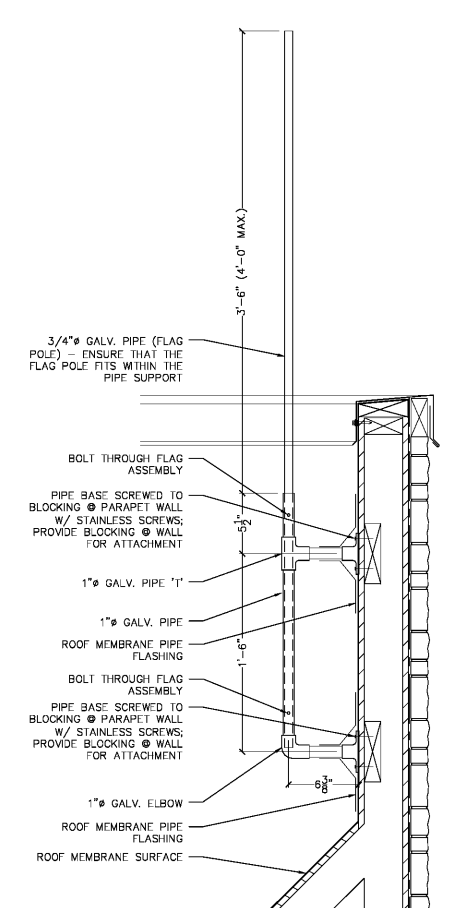
A 2x4 BRICK / E.I.F.S. WALL DETAIL
SCALE: 3" = 1'-0"



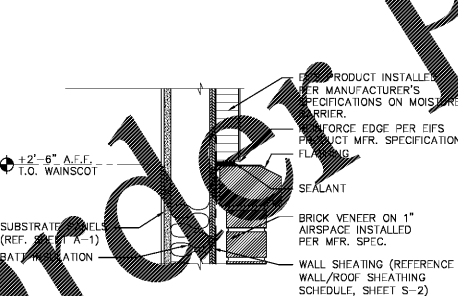
B EIFS / STONE TOWER WALL DETAIL
SCALE: 3" = 1'-0"



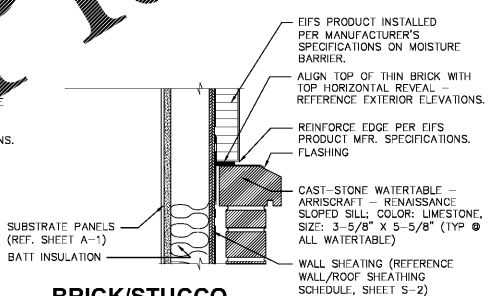
C 2x4 DRIVE-THROUGH WINDOW WALL DETAIL
SCALE: 3" = 1'-0"



F ROOFTOP FLAG-POLE DETAIL
SCALE: 1 1/2" = 1'-0"



D WANSYCOT/STUCCO TRANSITION
SCALE: 1 1/2" = 1'-0"



E BRICK/STUCCO TRANSITION @ MAIN ENTRY WALL
SCALE: 1 1/2" = 1'-0"

NOTE: G.C. TO PROVIDE TWO FLAG POLES @ EA. CORNER OF THE ENTRY AND FRONT TOWERS

Order Plans

WWW.LDMLINE.COM

NO.	DATE	BY	REVISION

BURGER KING

PREMIER KINGS, INC.
5529 CARMICHAEL ROAD
MONTOMOERY, ALABAMA 36117
PHONE: (205) 322-1778
LINDSEY@KALABAMA.COM

2126 Monts Avenue, 903
Phone: (205) 322-1751
Fax: (205) 322-1778
email: info@jha.com
www.jha.com

james m. huckestein architect AIA

architecture • planning • interior design

STATE OF GEORGIA
JAMES M. HUCKESTEIN
REGISTERED ARCHITECT
07.03.18

PROJECT # 16026.07
ROC-60 20/20 WAIVER: APRIL 2015 DESIGN RELEASE
BURGER KING RESTAURANT
5300 U.S. Hwy 278
Covington, GA