

"ADAM HALL DEFENDER COMPACT CABLE PROTECTOR" SUPPLIER: ELECTRIDUCT, INC. 6250 NW 27th WAY FT. LAUDERDALE, FL 33309 866-673-9590

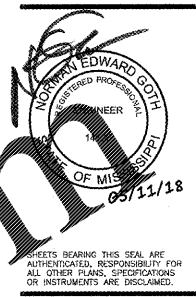
TELEPHONE & COMPUTER DATA SYSTEMS:
A. OWNER SHALL PROVIDE AND INSTALL ALL TELEPHONE AND DATA WIRING.

FIRE ALARM NOTE:
IN THE EVENT A MONITORED FIRE ALARM SYSTEM IS REQUIRED BY THE AUTHORITY HAVING JURISDICTION, THE ALARM SYSTEM WILL BE CONTRACTED DIRECTLY BY THE ALARM SERVICES MANAGER, LEIGH SIDES, WITH THE O'REILLY AUTOMOTIVE CORPORATE OFFICE. THE GENERAL CONTRACTOR SHALL NOT PROCURE ANYONE TO INSTALL OR QUOTE THESE SYSTEMS UNLESS THEY HAVE BEEN ASKED TO DO SO BY LEIGH SIDES. PLEASE CONTACT LEIGH SIDES @ 417-829-5712 IF A SYSTEM IS NEEDED OR IF THERE ARE ANY QUESTIONS.

ELECTRICAL DEMO NOTES
EXISTING WALLS TO BE DEMOLISHED: REMOVE ALL EXISTING RECEPTACLES, DATA, DEVICES WITH ASSOCIATED WIRING, CONDUIT AND BOXES FROM ALL DEMOLISHED WALLS. REFER TO ARCHITECTURAL DEMO PLAN FOR ADDITIONAL INFORMATION.
EXISTING COUNTERS: REMOVE EXISTING WIRES FROM BREAKERS THAT FEED EXISTING COUNTERS. REUSE EXISTING BREAKERS TO FEED NEW COUNTER RECEPTACLES. SEE DETAIL 1/E2.1. FIELD VERIFY EXISTING BREAKER SIZES AND LOCATIONS.

ELECTRICAL SCOPE OF WORK
EXISTING ELECTRICAL PANELS: ALL EXISTING ELECTRIC PANELS TO REMAIN AS IS, UNLESS OTHERWISE NOTED. NEW CIRCUITS TO BE RAN TO EXISTING PANELS AS REQUIRED. CONTRACTOR TO FIELD VERIFY SPACE IN EXISTING PANELS AND LOAD CAPACITY PRIOR TO INSTALLING NEW CIRCUITS.
EMERGENCY MANAGEMENT SYSTEM: KEEP EXISTING ADM 1204 & ADD TO.
TRANSFER SWITCH: INSTALL NEW TRANSFER SWITCH(S) ("E" PANEL) NEXT TO ELECTRICAL PANELS. SEE POWER AND LIGHTING PLAN FOR CIRCUITS TO BE INSTALLED TO TRANSFER SWITCH.
EXISTING TELEPHONE EQUIPMENT: EXISTING TELEPHONE SERVICE TO BE RE-USED.

OWNER PROVIDED EQUIPMENT
ALL SWITCHGEAR (PANELBOARDS, TRANSFORMERS, AND DISCONNECTS) (EXCEPT FOR ROOFTOP UNITS) WILL BE SUPPLIED BY THE OWNER (O'REILLY). SWITCHGEAR SHALL BE DIRECT ORDERED AND OR RELEASED FROM GRAYBAR ELECTRIC COMPANY, SADDY YORK, NY (314) 573-2082.



O'Reilly AUTO PARTS
CORPORATE OFFICES
233 SOUTH PATTERSON
SPRINGFIELD, MISSOURI 65802
(417) 862-2674 TELEPHONE

PROJECT: O'REILLY AUTO PARTS STORE
2730 HIGHWAY 80 EAST
PEARL, MISSISSIPPI

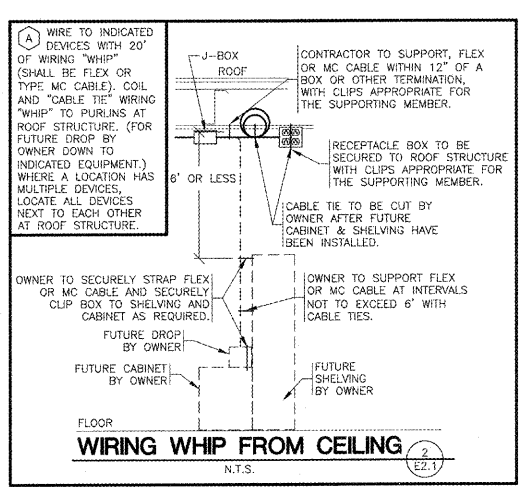
PARTIAL POWER PLAN

3855 S. JEFFERSON AVE.
SPRINGFIELD, MO 65807
P: 417-862-2200
F: 417-862-1186
www.o-reilly.com



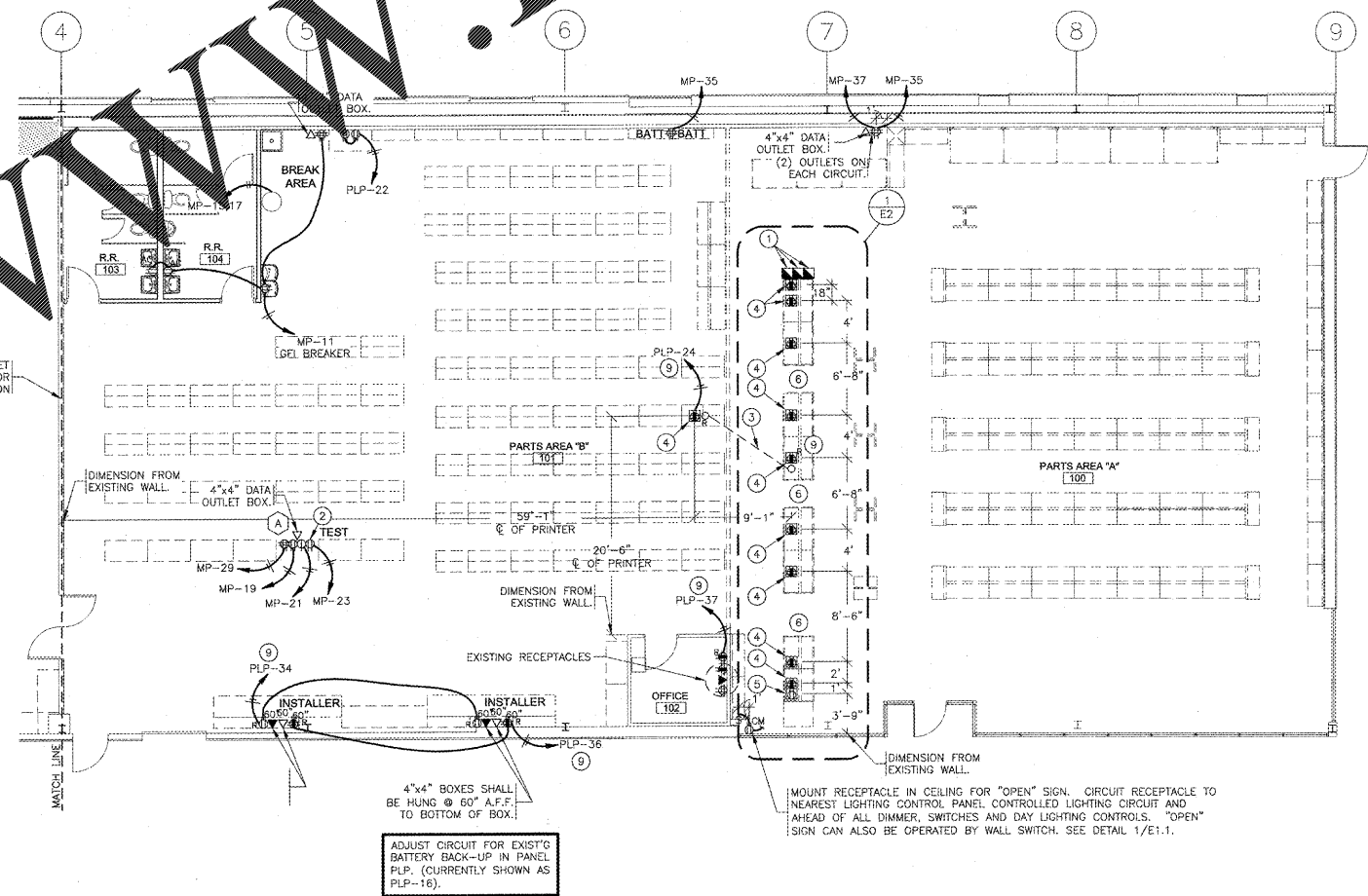
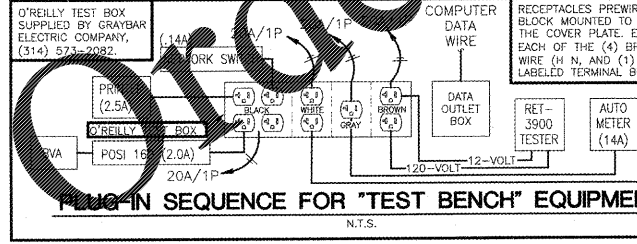
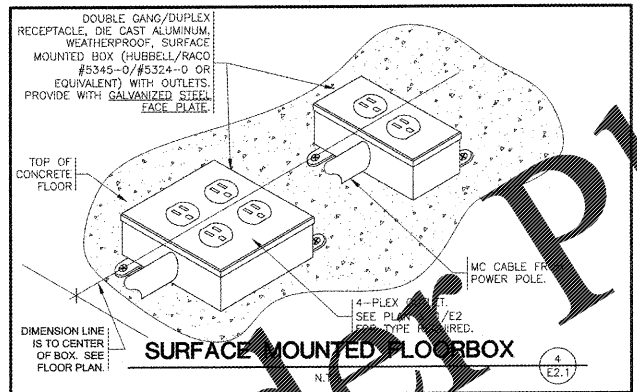
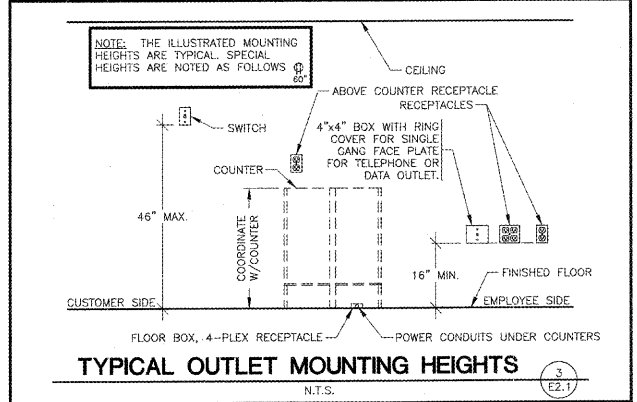
DRAWN BY: RM
CHECKED BY: NEG
DATE: 05/11/18
REVISION:
PROJECT NUMBER: PEA-0994
SHEET NUMBER

E2.1

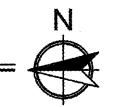


- POWER PLAN KEYNOTES**
- 12' BLANK, TWO CHANNEL ALUMINUM FINISH, TELE-POWER POLE FOR FEED TO OUTLETS AND FOR COMMUNICATIONS/DATA WIRING AT COUNTER. (EQUAL TO "WIREMOLD" PRODUCT). TYPICAL.
 - TEST OUTLET BOX, 120V. INSTALL (2) DUPLEX OUTLETS EACH ON THEIR OWN CIRCUIT, (1) SINGLE OUTLET ON ONE CIRCUIT, (1) QUADPLEX OUTLET ON ONE CIRCUIT & A COMPUTER DATA OUTLET BOX. SEE DETAIL 5/E2.1.
 - NOT USED.
 - FLOOR QUADPLEX/FOURPLEX ISOLATED GROUND RECEPTACLE. SEE DETAIL 4/E2.1.
 - FLOOR DUPLEX RECEPTACLE (FOR OKE MACHINE ONLY). SEE DETAIL 1/E2.1 AND 4/E2.1 SIMILAR.
 - CONTRACTOR TO INSTALL "ADAM HALL DEFENDER COMPACT CABLE PROTECTOR" 85100" RACEWAY ON FLOOR BETWEEN COUNTERS, TYPICAL.
 - INSTALL JUNCTION BOX FOR ENERGY MANAGEMENT SYSTEM DOOR POSITION SWITCHES AND WIRE TO CONTROLLING HVAC IN AREA OF BACK DOOR, PER EQUIPMENT SUPPLIER REQUIREMENTS. SEE E5 SHEET.
 - NOT USED.
 - SEE "E" PANEL TRANSFER SWITCH SCHEDULE FOR POSITION OF CIRCUIT WIRES THROUGH TRANSFER SWITCH.

MARKING OF ELECTRICAL WORKING SPACE
IN FRONT OF ALL METER PANELS, SUB PANELS, TRANSFORMERS, AND DISCONNECTS, PROVIDE A WORKING SPACE IN FRONT, ON THE FLOOR, RECTANGLE, PAINT WITH CONTRASTING COLOR, 4-INCH BRUSH STROKES WITH DIAGONAL LINES INSIDE, WITH 6-INCH LETTERS, "NO STORAGE" BLOCKED IN, AND/OR LARGE STICKER SAYING THE SAME THING. 4'-0" DEPTH TYPICAL AT ALL LOCATIONS.



PARTIAL POWER PLAN
SCALE: 1/8" = 1'-0"



REPRODUCTION PROHIBITED WITHOUT THE EXPRESSED WRITTEN CONSENT OF THE DESIGN PROFESSIONAL.