

LIGHT FIXTURE SCHEDULE															
GRAYBAR ELECTRIC CO., INC. 11885 LACKLAND ROAD ST. LOUIS, MO 63146										GRAYBAR O'REILLY TEAM EMAIL: oreilly@graybar.com TOLL FREE: (314) 573-2080					
MARK	MFR.	CATALOG NUMBER	SUPPLY VOLTAGE	FINISH	MOUNTING			LAMP			WATTAGE	DESCRIPTION OF ACCESSORIES	NOTES	FIXTURE QUANTITY	
					LAY-IN	RECESSED SURFACE WALL	SURF. CEILING	FLUORESCENT	LED	OTHER					(General Electric) LAMP CATALOG NUMBER/TYPE
LED DIMMABLE LIGHTS - ALL INDOOR LIGHT FIXTURES SHALL HAVE DISCONNECTING MEANS TO COMPLY WITH NEC 410.130(G)															
A	LSI	SDL 8 LED 78 40 UE OR NO SUBSTITUTIONS	120	WHITE		X		X			67	GRID HANGER (2 PER FIXTURE)	GRID HANGER (648480) (CEILING GRID ONLY). 0-10 VOLT DIMMING DRIVER STANDARD.	54	
B	LSI	SDL 4 LED 39 40 UE OR NO SUBSTITUTIONS	120	WHITE		X		X			34	GRID HANGER (2 PER FIXTURE)	GRID HANGER (648480) (CEILING GRID ONLY). 0-10 VOLT DIMMING DRIVER STANDARD.	11	
C	LSI	SDL 8 LED 78 40 UE OR NO SUBSTITUTIONS	120	WHITE			X	X			67	3' CHAIN HANGING KIT (1 PER FIXTURE)	HANG TOP OF FIXTURES AT 12" A.F.F. WITH CHAIN HANGERS AND LENGTH OF CHAIN AS REQUIRED. 0-10 VOLT DIMMING, DRIVER STANDARD.	133	
D	LSI	SDL 4 LED 39 40 UE OR NO SUBSTITUTIONS	120	WHITE			X	X			34	3' CHAIN HANGING KIT (1 PER FIXTURE)	HANG TOP OF FIXTURES AT 12" A.F.F. WITH CHAIN HANGERS AND LENGTH OF CHAIN AS REQUIRED. 0-10 VOLT DIMMING, DRIVER STANDARD.	16	
COMBINATION EXIT/EMERGENCY LIGHTS, EMERGENCY LIGHTS & EXTERIOR EMERGENCY REMOTE HEADS															
XR	COOPER	APCH7R (RED LETTERS)	120	WHITE		X	X		X		2	LED EXIT + (2) 3.6V	UNIVERSAL (WALL/CLG.) SINGLE PR DOUBLE FACE	BACKUP BATTERIES SHALL MAINTAIN 100% ILLUMINATION FOR A MINIMUM OF 90 MINUTES TO COMPLY WITH ARTICLE 700.12(A) OF THE N.E.C.	9
EM	COOPER	APEL	120	WHITE		X	X		X		2	3.6V	UNIVERSAL (WALL/CLG.)	BACKUP BATTERIES SHALL MAINTAIN 100% ILLUMINATION FOR A MINIMUM OF 90 MINUTES TO COMPLY WITH ARTICLE 700.12(A) OF THE N.E.C.	60
RH2	COOPER	APWR2	3.6V DC	WHITE		X		X			2	LED REMOTE HEAD		POWERED BY EMERGENCY "XR" FIXTURE.	5
LED EXTERIOR LIGHTS															
PC	INTERMATIC	PHOTOCCELL - #K4251	120	DARK BRONZE		X								MOUNT ABOVE WALL SCONCE LOCATED NEAR FREIGHT DOOR.	1
L	LSI	LAD6 41 LED 40 75 UE TR6R SFHAZ	120	CLEAR	X			X						RECESSED CAN.	1
WSX	SEE "SP1" SHEET FOR EXTERIOR LIGHTING WALL SCONCE FIXTURE SCHEDULE														
PX	SEE "SP1" SHEET FOR EXTERIOR LIGHTING POLE LIGHT FIXTURE SCHEDULE														
FIXTURE QUANTITY TO BE VERIFIED WITH LIGHTING PLAN QUANTITY															

- ### LIGHTING - KEYNOTES
- NOT USED.
  - TO "OPEN" SIGN. SEE SHEET E2.1.
  - SEE "E" PANEL TRANSFER SWITCH SCHEDULE FOR POSITION OF CIRCUIT WIRES THROUGH TRANSFER SWITCH.
  - CIRCUIT THRU EXISTING ADM-1204 SYSTEM. SEE LIGHTING CONTROL PANEL DETAIL THIS SHEET.
  - NOT USED.
  - SUSPEND 8'-0" A.F.F. THIS FIXTURE ONLY.
  - ROUTE THE OFFICE AND RESTROOM'S LIGHTING CIRCUIT THRU THE LOCAL OCCUPANCY SENSORS AND DIRECTLY TO THE CIRCUIT BREAKER. THESE FIXTURES SHALL NOT BE SWITCHED BY THE LIGHTING CONTROL PANEL. SEE "E" PANEL TRANSFER SWITCH SCHEDULE FOR POSITION OF CIRCUIT WIRES THROUGH TRANSFER SWITCH.
  - REFER TO ARCHITECTURAL ELEVATIONS SHEETS SHOWING DIMENSIONED LOCATIONS. TYPICAL ALL WALL SCONCES.
  - SECURITY & EGRESS FIXTURE TO BE AS CLOSE AS POSSIBLE BUT NOT OVER THE OVERHEAD DOOR WHEN OPEN.
  - ROUTE SECURITY & EGRESS LIGHTING CIRCUIT DIRECTLY TO THE ELECTRICAL PANEL.
  - DIMMER LIGHTING CONTROL SWITCHES LOCATED ON OUTSIDE WALL OF OFFICE. SEE LIGHTING PLAN FOR QUANTITY. SEE DETAILS ON SHEET E4 FOR MORE INFORMATION.

### AUTOMATIC LIGHTING CONTROL

COMPLIANCE WITH ENERGY CODE IS ACHIEVED BY:

- ONCE THE EMS HAS BEEN PROGRAMMED, THE INTERIOR AND EXTERIOR LIGHTS WILL TURN ON AND OFF USING THE FOLLOWING LOGIC: SEE SHEETS VS1, VS2 AND VS3
- INTERIOR WORK LIGHTS WILL TURN ON WITH FIRST MOTION IN THE STORE AND WILL TURN OFF 15 MINUTES AFTER LAST MOTION ONCE THE STORE IS CLOSED.
- INTERIOR SALES LIGHTS WILL TURN ON AT STORE OPENING AND TURN OFF 15 MINUTES AFTER STORE CLOSING.
- EXTERIOR SIGN LIGHTS WILL TURN ON WHEN ITS DARK ENOUGH OUTSIDE ANYTIME DURING STORE HOURS, AND WILL TURN OFF AT STORE CLOSING.
- EXTERIOR SITE LIGHTS WILL TURN ON WHEN IT IS DARK ENOUGH OUTSIDE AND IT IS WITHIN STORE HOURS OR THERE IS MOTION IN THE STORE. THEY WILL TURN OFF 30 MINUTES AFTER LAST MOTION ONCE THE STORE IS CLOSED.
- FOR NEW CONSTRUCTION LOCATIONS ONLY, THERE IS A TEMPORARY PROGRAM TO KEEP SIGN AND SITE LIGHTS ON UNTIL MIDNIGHT RATHER THAN THE TIMES INDICATED ABOVE. O'REILLY WILL DISABLE THIS PROGRAM ONE YEAR AFTER STORE OPENING.
- RESTROOMS AND OFFICES: ALL LIGHTING IN THESE AREAS ARE CONTROLLED BY OCCUPANT-SENSING DEVICES.

### EMERGENCY/EXIT LIGHTING

PLACE EXIT SIGNS HIGH ENOUGH TO BE SEEN ABOVE ALL MERCHANDISE WITH THE FOLLOWING LIMITATION: THE MAXIMUM HEIGHT FOR AN EXIT LIGHT ASSOCIATED WITH A SPECIFIC OPENING (I.E. MOUNTED OVER A DOOR OR OPENING) SHALL BE NO GREATER THAN THE CODE ALLOWED 6'-8" ABOVE THE TOP EDGE OF THE DOOR OR OPENING.

### SEISMIC RESTRAINTS (ONLY REQUIRED FOR SEISMIC DESIGN CATEGORIES C,D,E,F)

### CONTRACTOR TO REFER TO ARCHITECTURAL SHEET E1.1 FOR SEISMIC DESIGN CATEGORY.

IF REQUIRED SEE SEISMIC DETAILS SHEET E1.1

### INTERIOR LIGHTING ZONES

ALL INTERIOR LIGHTING WITHIN PARTS AREA "A" SHALL BE CONSIDERED "SALES" ZONE (ON ONLY WHEN STORE IS OPEN FOR BUSINESS).

ALL INTERIOR LIGHTING WITHIN PARTS AREA "B" SHALL BE CONSIDERED "WORK" ZONE (ON ONLY WHEN STORE IS OPEN FOR BUSINESS).

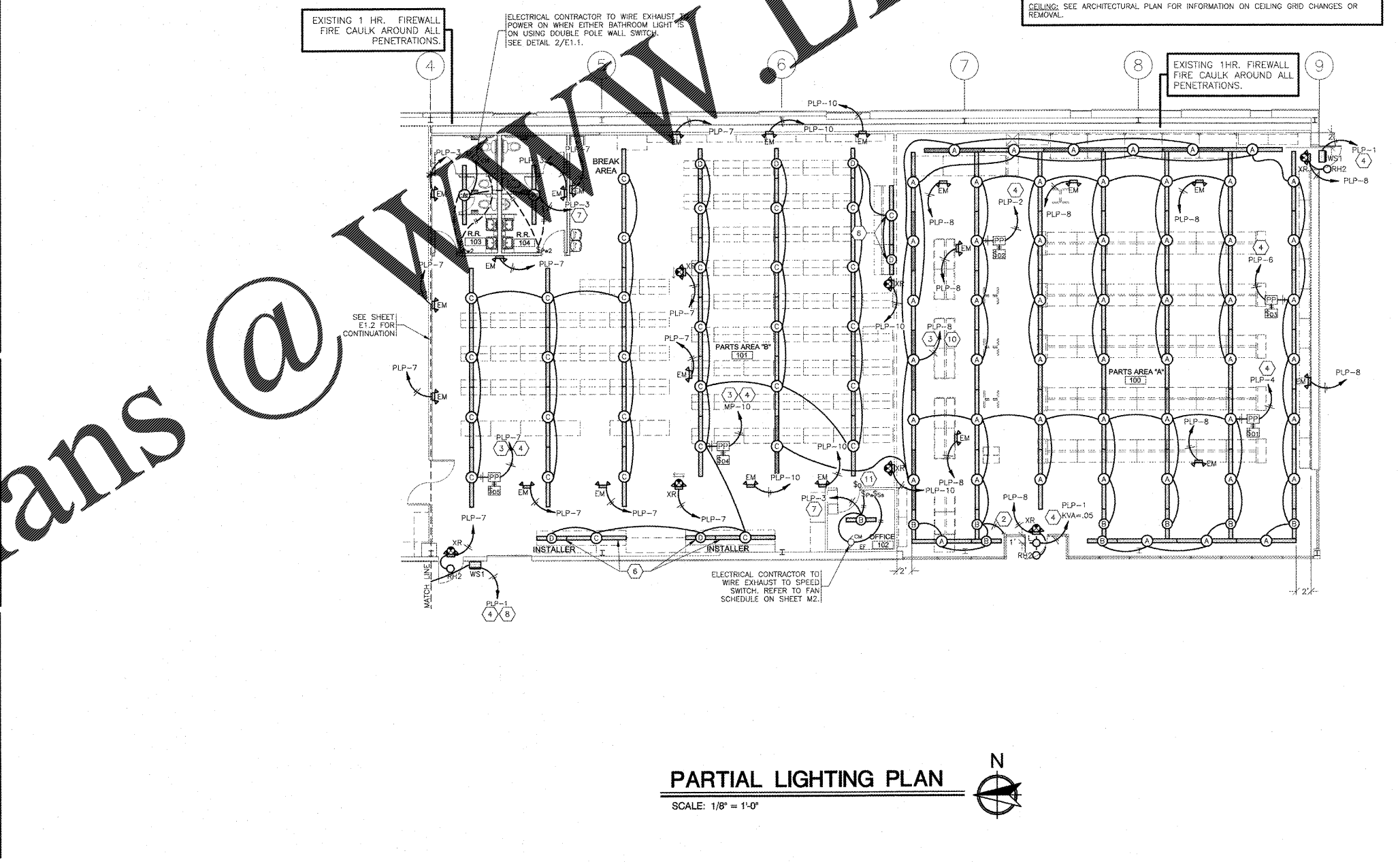
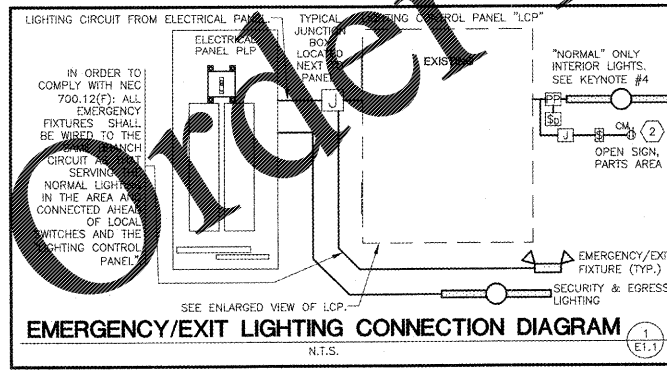
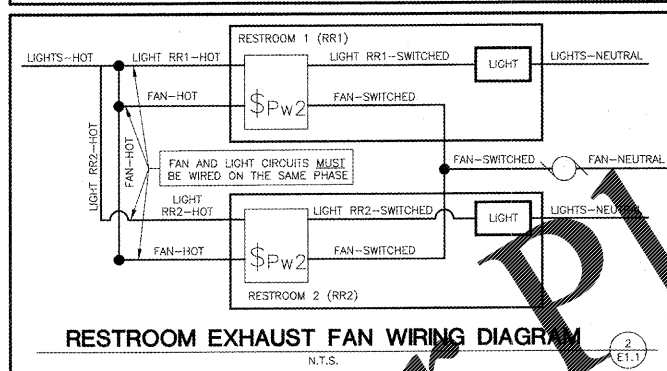
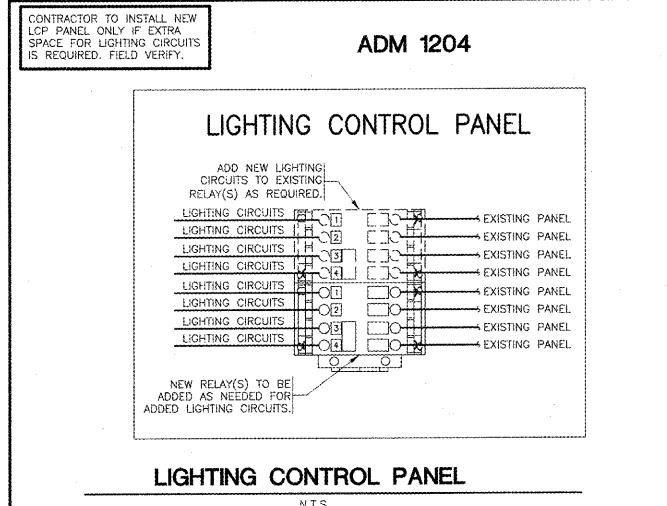
### LIGHTING SCOPE OF WORK

EXISTING LIGHTING: REMOVE ALL EXISTING LIGHT FIXTURES.

NEW LIGHTING: ALL NEW LIGHTING AND LIGHTING DEVICES SHALL BE INSTALLED THROUGHOUT.

ENERGY MANAGEMENT SYSTEM: EXISTING ADM 1204 SHALL REMAIN. FIELD VERIFY FOR EXACT LOCATION.

CEILING: SEE ARCHITECTURAL PLAN FOR INFORMATION ON CEILING GRID CHANGES OR REMOVAL.



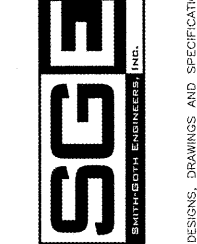
**O'Reilly AUTO PARTS**

CORPORATE OFFICES  
233 SOUTH PATTERSON  
SPRINGFIELD, MISSISSIPPI 39062  
(417) 862-2674 TELEPHONE

PROJECT: NEW O'REILLY AUTO PARTS STORE  
2730 HIGHWAY 80 EAST  
PEARL, MISSISSIPPI

PARTIAL LIGHTING PLAN

3855 S. JEFFERSON AVE.  
SPRINGFIELD, MO 65807  
P: 417-882-2200  
WWW.BENTON&BOWLES.COM



DRAWN BY: RM  
CHECKED BY: NEG  
DATE: 05/11/18  
REVISION:

PROJECT NUMBER: PEA-0994  
SHEET NUMBER: E1.1

DESIGNS, DRAWINGS AND SPECIFICATIONS ARE INSTRUMENTS OF SERVICE AND ARE THE PROPERTY OF THE DESIGN PROFESSIONAL. REPRODUCTION PROHIBITED WITHOUT THE EXPRESSED WRITTEN CONSENT OF THE DESIGN PROFESSIONAL. COPYRIGHT 2018-2019