

**PROJECT SPECIAL NOTES**

1. NO CONDUIT SHALL BE INSTALLED IN ANY FLOOR SLAB THAT IS NOT ON GRADE. NO EXCEPTIONS. CONDUIT SHALL BE INSTALLED OVERHEAD OR ROUTED THROUGH THE SLAB AND INSTALLED ABOVE THE CEILING OF THE LEVEL BELOW.

**FIRE ALARM PLAN NOTES**

1. SEE ELECTRICAL LEGEND, ELECTRICAL DETAILS, AND SPECIFICATIONS FOR REQUIREMENTS AND MOUNTING HEIGHTS.
2. PROVIDE POWER EXTENDER PANELS AS REQUIRED BY FIRE ALARM SYSTEM MANUFACTURER / SUPPLIER / INSTALLER.
3. PROVIDE ALL NECESSARY BRANCH CIRCUITS TO POWER EXTENDER PANELS. BRANCH CIRCUITS SHALL BE FED FROM NEAREST 208Y/120V PANELBOARD. PROVIDE LOCKING 1-PHASE CIRCUIT BREAKER HANDLES.
4. SEE SHEET E3.01, FOR FIRE ALARM PLAN KEYNOTES.

**ROBERTSON ROOF ARCHITECTS ENGINEERS**  
 3460 Preston Ridge  
 Marietta, GA 30005  
 770.674.2600 / www.rre.com



(Facility No. 642-0198)

**Dawson County College and Career Academy**  
 Dawsonville, Georgia

FOR:  
**Dawson County Schools**  
 Overall Squarefootage = 35,800 SF  
 FTE = 163

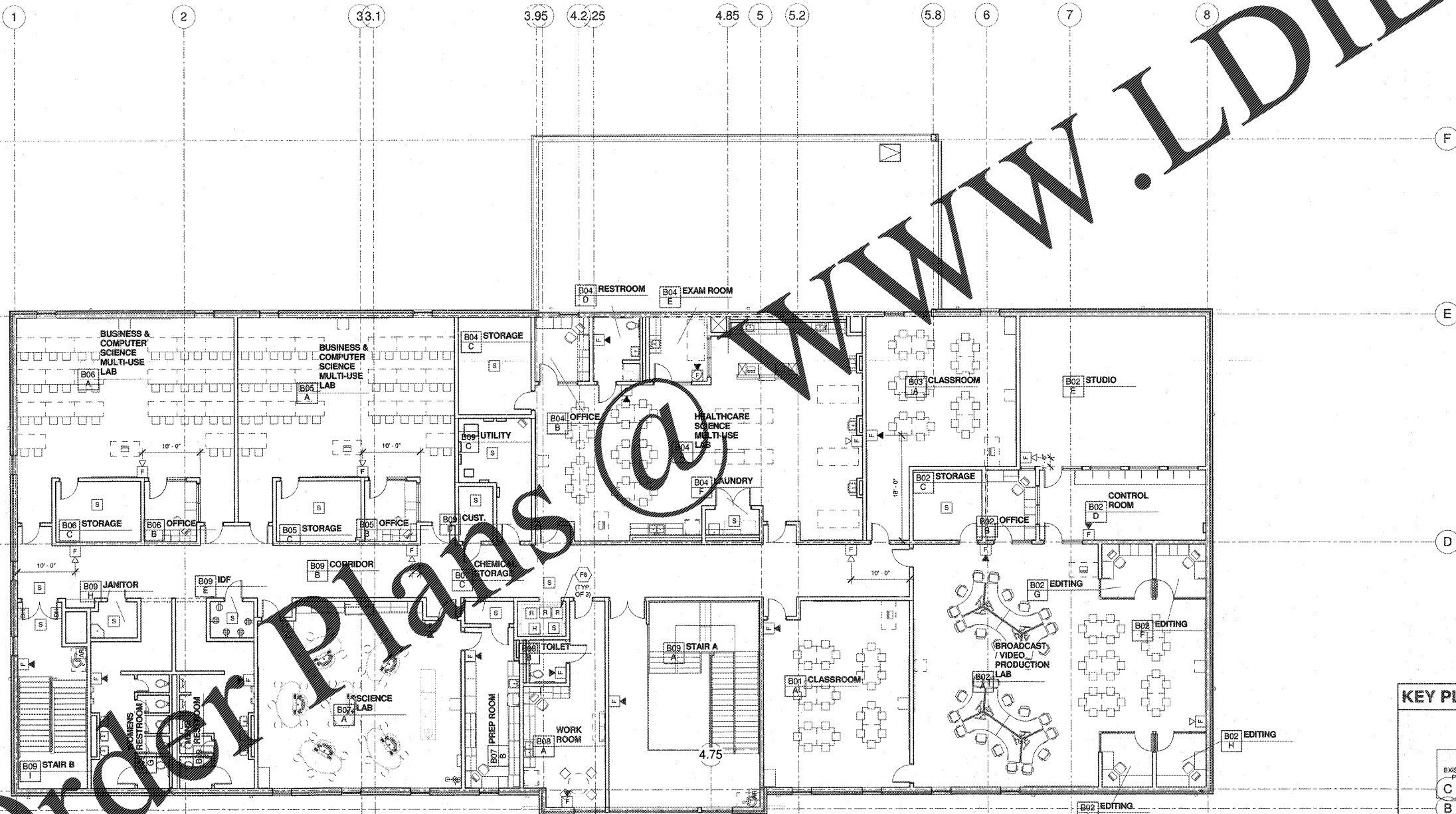
NO.	REVISIONS

DATE: 04-24-2018  
 PROJECT NUMBER: 17-303  
 SHEET NUMBER: E3.02

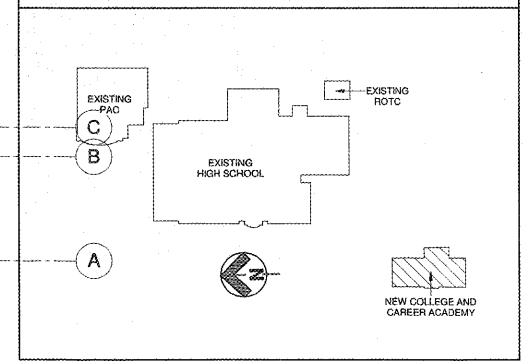
04-24-2018

17-303

E3.02



**KEY PLAN**



**FIRE ALARM PLAN - UPPER LEVEL**  
 1/8" = 1'-0"

Order Plans @ www.LDILine.com